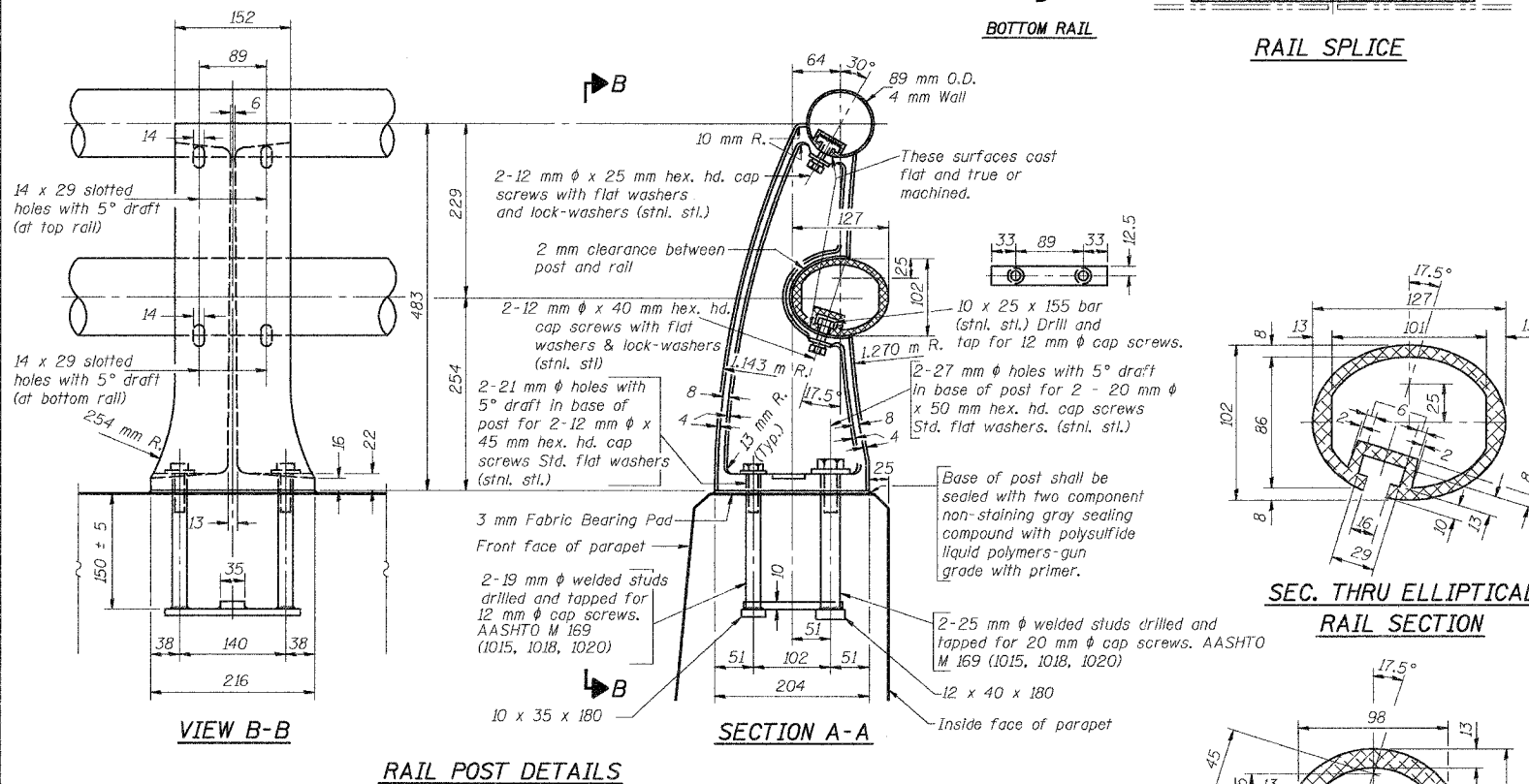
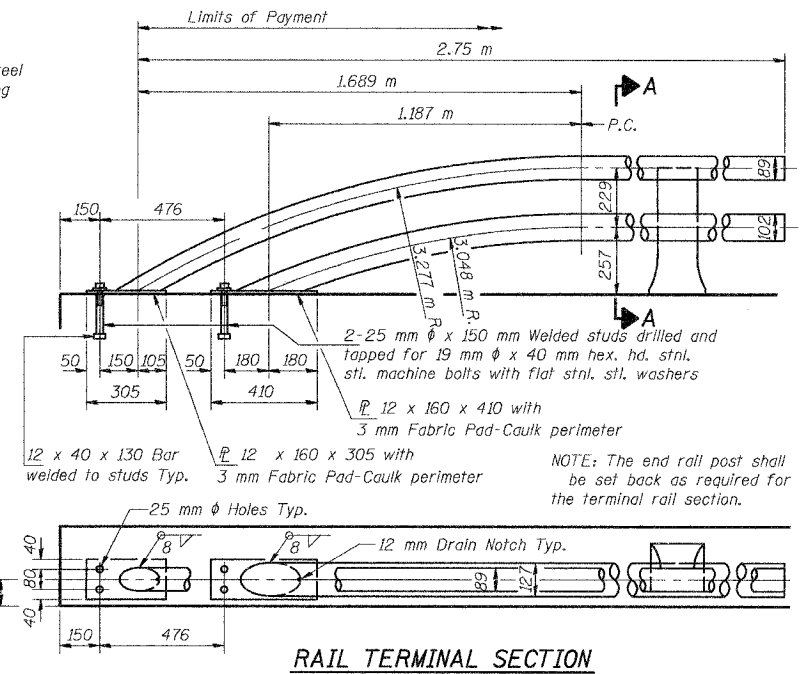
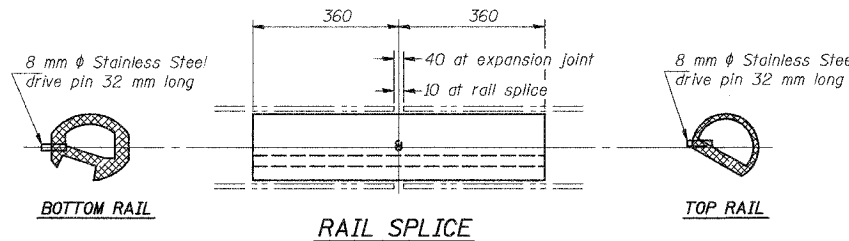
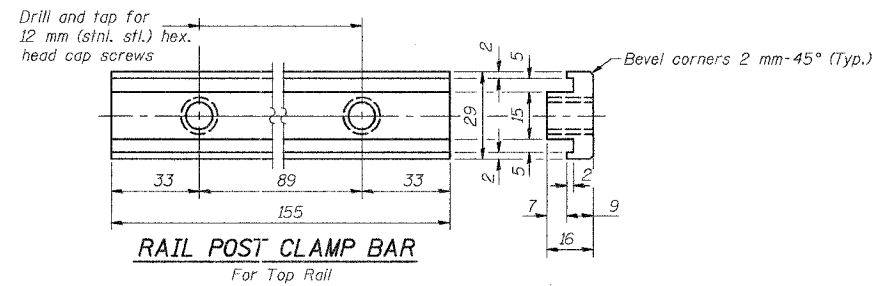
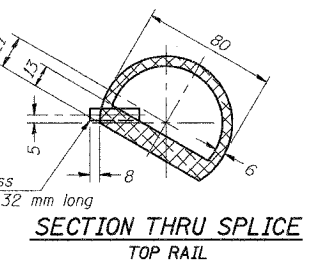
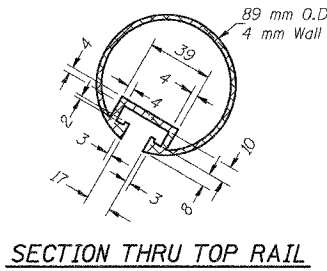


STATE OF ILLINOIS  
DEPARTMENT OF TRANSPORTATION

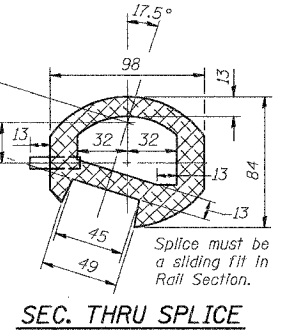
PROJECT NO.	SECTION	COUNTY	SHEET	TOTAL
P.A.P. 303	29R-T	McHENRY	88	69
FED. ROAD DIST. NO. 1	ILLINOIS	FED. AID PROJECT-		

CONTRACT NO. 62202

**Notes:** All Posts shall be normal to parapet.  
All Aluminum Alloy Extruded Rail shall be supplied in modular lengths of 9 meters, except at the end of bridge or over open joints in bridge deck where the rail shall be attached to a minimum of 2 posts. If the rail is on a horizontal curve of 700 meter radius or less, the modular lengths may be reduced but shall be attached to a minimum of 2 posts.  
All joints in rail shall be spliced per detail.  
Provide 1-3 mm and 2-1.6 mm Aluminum Shims for 25% of the Posts. Rail elements shall be parallel to Grade-high spots will be ground and low spots shimmed.  
Railing shall be according to Section 509 of the Standard Specifications, except as noted, and will be paid for at the contract unit price per meter for ALUMINUM RAILING, TYPE L.  
Aluminum alloy rail shall conform to ASTM B 221M alloy 6061-T6 or 6351-T5 with min. yield stress 240 MPa, min. tensile strength 260 MPa, and elongation of 10% in 50 mm.  
All dimensions are in millimeters (mm) except as noted.



SEC. THRU ELLIPTICAL RAIL SECTION



**BILL OF MATERIAL**

Item	Unit	Quantity
Aluminum Railing, Type L	m	272

DESIGNED	J.S./R.A.
CHECKED	H.T./N.S.
DRAWN	J.S./B.L.D.
CHECKED	H.T./M.R.

**Soodan**  
Structural & Architectural, Inc.  
Engineers & Construction Consultants  
220 North Lincoln Street, Suite 300  
Chicago, Illinois 60602  
Tel: 312/253-0003 Fax: 312/253-3006  
E-Mail: transportation@soodan.com

Sheet SI-30 of 37  
**TYPE L ALUMINUM RAILING**  
U.S. 14 RETAINING WALLS  
AT MOKELER CREEK  
SECTION 29R-T  
McHENRY COUNTY  
STA. 0+647.90 TO STA. 0+982.78  
AT STRUCTURE NO. 056-0007  
Date: February, 2005 Scale: None