

STATE OF ILLINOIS
DEPARTMENT OF TRANSPORTATION

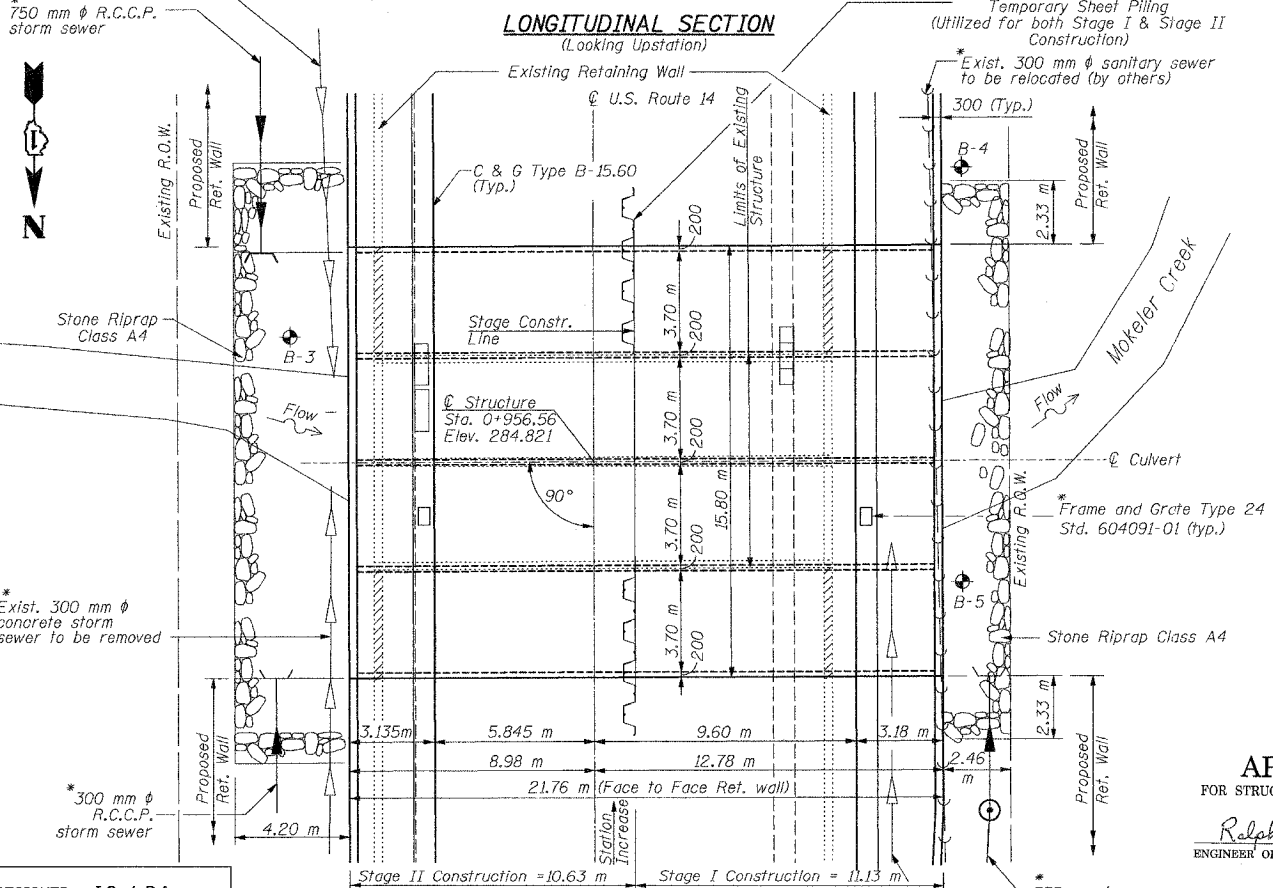
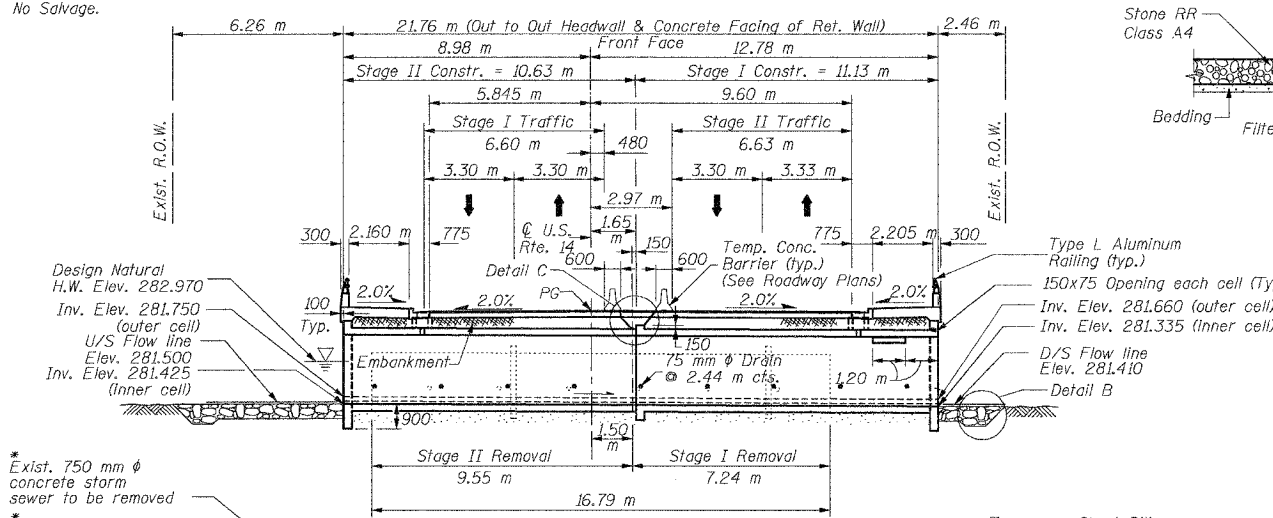
ROUTE NO.	SECTION	COUNTY	SHEET NO.	TOTAL SHEETS
383	29R-T	McHENRY	88	77
FED. ROAD DIST. NO. 1				

CONTRACT NO. 62202

Bench Mark: At Harvard, one block E. of U.S. Highway 14 on State Highway 173, 14 m S., 11.6 m W. of, and 0.52 m Higher Than center of Cross Streets (Junction N. Hart and E. Diggins), 2.9 m S. and 0.46 m W. of NE. corner Grade School Parking Lot, in concrete post, Aluminum Tablet Stamped "51 A 1923 966" Painted R1 "966.3" Tablet Mutilated, Designation Re-Stamped) Elev. =294.508

Existing Structure: Double 3.05m x 1.68 m x 16.79 m± long R.C. box culvert Struct. No. 056-0048 was originally constructed in 1924 and reconstructed in 1940, to be removed. The road shall be kept open to one lane traffic in each direction at all time utilizing stage construction.

No Salvage.

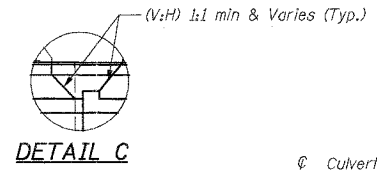
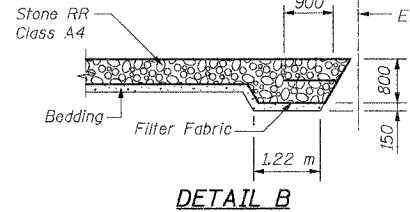
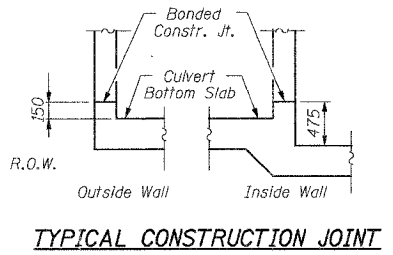


DESIGNED	J.S. / R.A.
CHECKED	H.T. / N.U.S
DRAWN	J.S.
CHECKED	H.T./M.R.

Soodan
Soodan & Associates, Inc.
Professional Engineers & Construction Consultants
210 North Lincoln Street, Suite 800
Chicago, Illinois 60602
Tel: 312/253-0003 Fax: 312/253-8006
E-Mail: transport@soodan.com

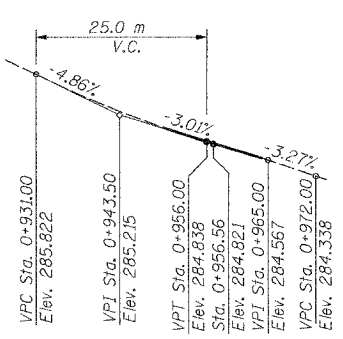
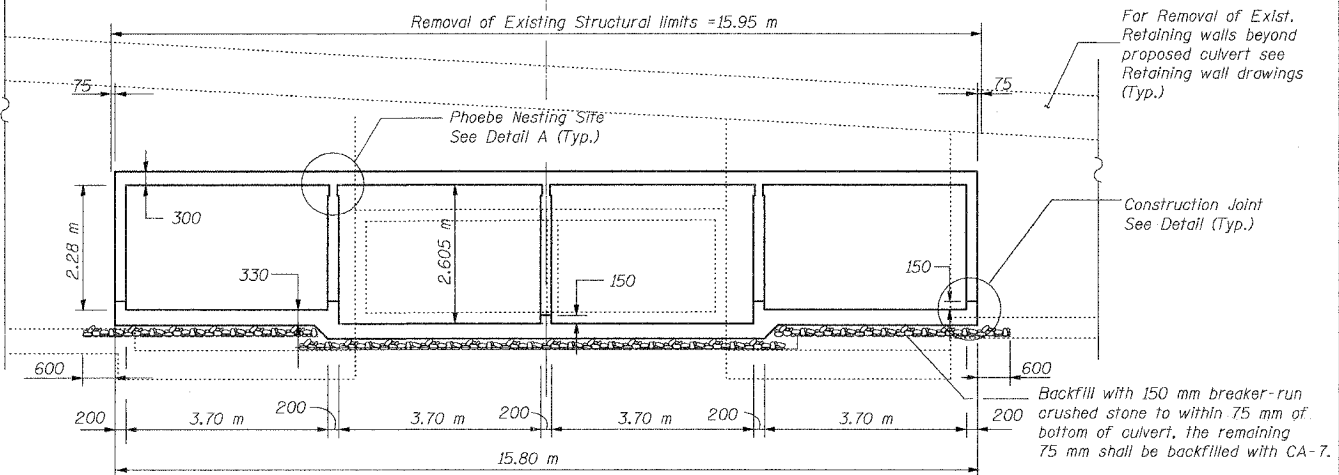
APPROVED
FOR STRUCTURAL ADEQUACY ONLY
Ralph E. Anderson
ENGINEER OF BRIDGES AND STRUCTURES

Hakim H. Taiyebi
HAKIM H. TAIYEBI
ILLINOIS LICENSED
STRUCTURAL ENGINEER
NO. 081-003266
LICENSE EXP. 11-30-06



NAME PLATE
See Std. 515001

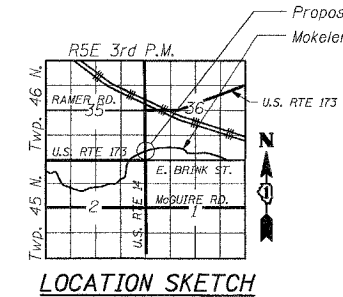
STATION 0+956.56
BUILT 200_ BY
STATE OF ILLINOIS
F.A.P. RTE. 303 SEC. 29R-T
LOADING MS18
STR. NO. 056-0076



WATERWAY INFORMATION

Drainage Area = 1109 ha Low Grade Elev. 284.15 m @ Sta. 0+955 Max. Recorded H.W.E. 283.01 m

Flood	Freq. Yr.	Q m³/s	Opening m²		Nat. H.W.E. (m)	Head - m		Headwater Elevation (m)	
			Exist.	Prop.		Exist.	Prop.	Exist.	Prop.
Design	10	13.88	7.84	18.24	282.77	0.25	0.00	283.02	282.63
Base	50	20.96	9.07	20.87	282.97	0.45	0.00	283.42	282.96
Base	100	24.07	9.29	22.07	283.05	0.63	0.00	283.68	283.03
Max. Calc.	500	32.00	9.29	24.07	283.20	1.17	0.00	284.37	283.19



GENERAL PLAN
U.S. ROUTE 14
OVER MOKELIER CREEK
SECTION 29R-T
McHENRY COUNTY
STA. 0+956.56
STRUCTURE NO. 056-0076

Date: February, 2005 Scale: None