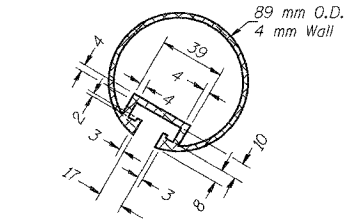


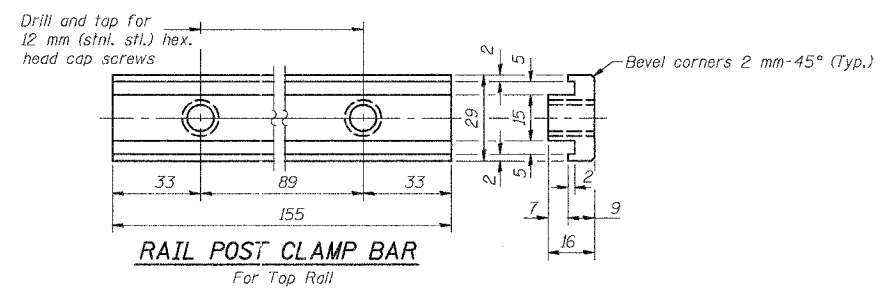
STATE OF ILLINOIS
DEPARTMENT OF TRANSPORTATION

PROJECT NO.	SECTION	COUNTY	SHEET	TOTAL SHEETS
P.A.P. 383	29R-T	McHENRY	88	83
FED. ROAD DIST. NO. 1	ILLINOIS	FED. AID PROJECT		

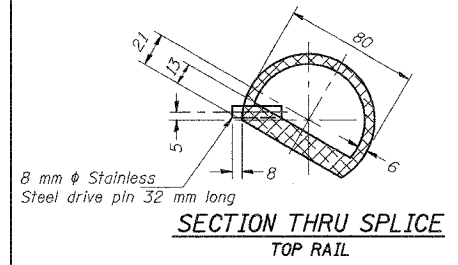
CONTRACT NO. 62202



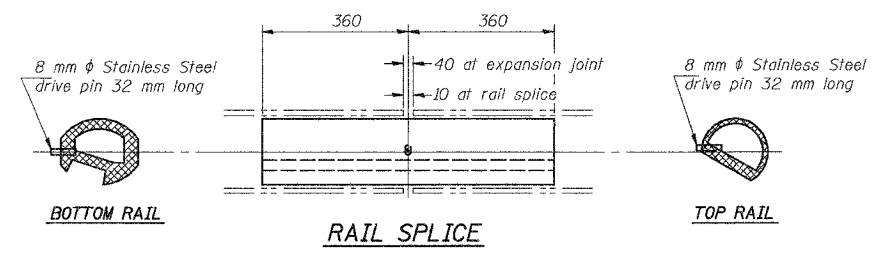
SECTION THRU TOP RAIL



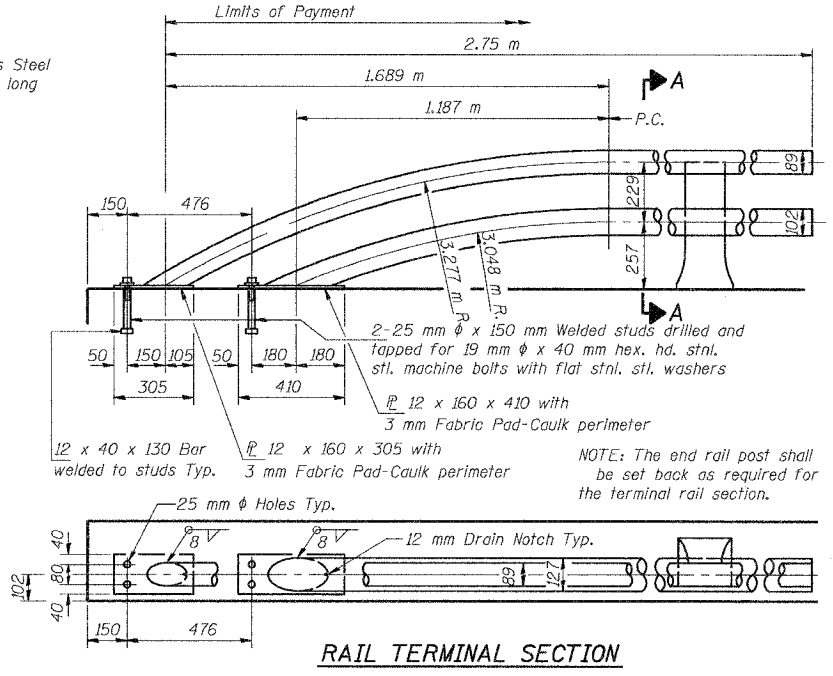
RAIL POST CLAMP BAR
For Top Rail



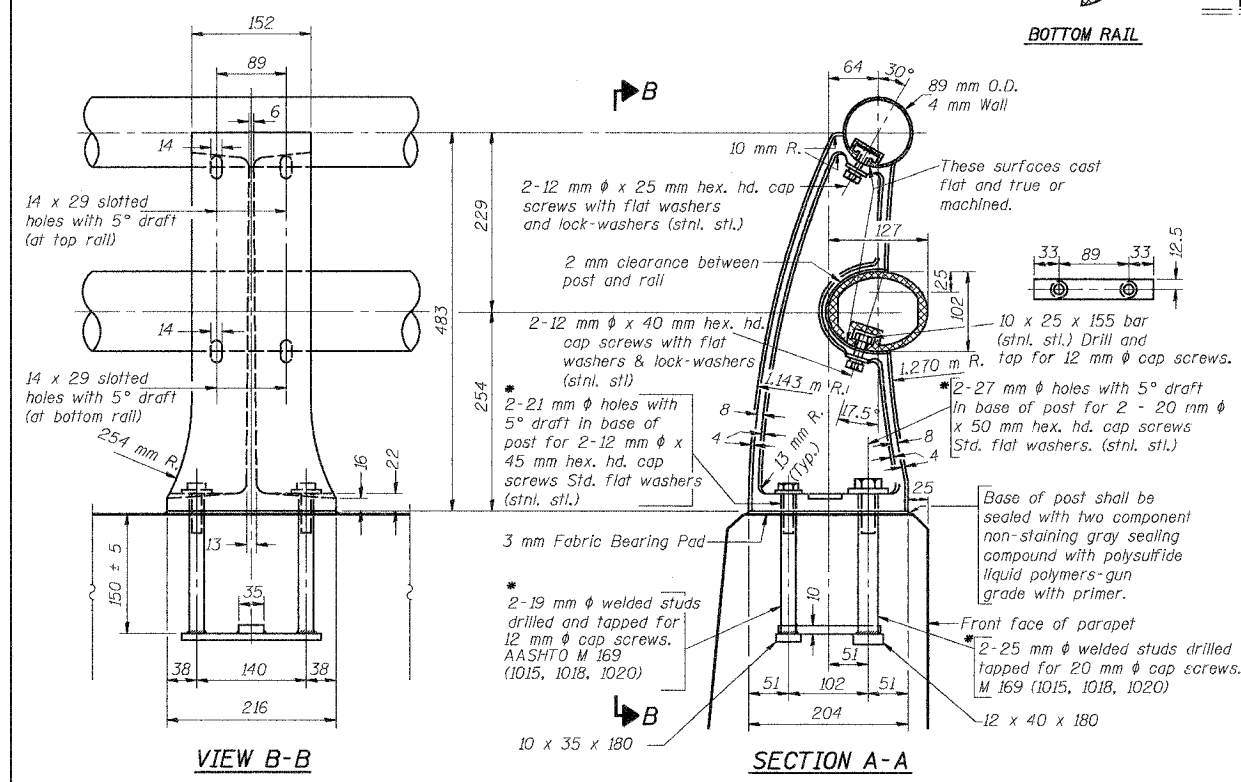
SECTION THRU SPLICE
TOP RAIL



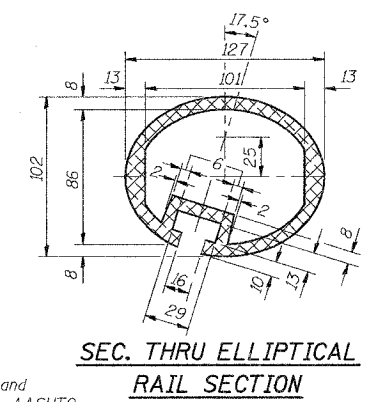
RAIL SPLICE



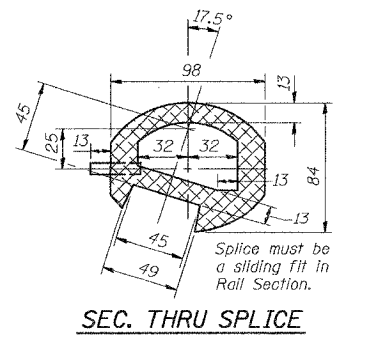
RAIL TERMINAL SECTION



RAIL POST DETAILS



SEC. THRU ELLIPTICAL
RAIL SECTION



SEC. THRU SPLICE

Notes: All Posts shall be normal to parapet.
All Aluminum Alloy Extruded Rail shall be supplied in modular lengths of 9 meters, except at the end of bridge or over open joints in bridge deck where the rail shall be attached to a minimum of 2 posts. If the rail is on a horizontal curve of 700 meter radius or less, the modular lengths may be reduced but shall be attached to a minimum of 2 posts.
All joints in rail shall be spliced per detail.
Provide 1-3 mm and 2-1.5 mm Aluminum Shims for 25% of the Posts.
Rail elements shall be parallel to Grade-high spots will be ground and low spots shimmed.
Railing shall be according to Section 509 of the Standard Specifications, except as noted, and will be paid for at the contract unit price per meter for ALUMINUM RAILING, TYPE L.
Aluminum alloy rail shall conform to ASTM B 221M alloy 6061-T6 or 6351-T5 with min. yield stress 240 MPa, min. tensile strength 260 MPa, and elongation of 10% in 50 mm.
All dimensions are in millimeters (mm) except as noted.

BILL OF MATERIAL

Item	Unit	Quantity
Aluminum Railing, Type L	m	31.6

DESIGNED	J.S. / R.A.
CHECKED	H.T. / N.U.S.
DRAWN	J.S.
CHECKED	H.T./M.R.

Soodan
Soodan & Associates, Inc.
Architects, Engineers & Construction Consultants
102 North LaSalle Street, Suite 2000
Chicago, Illinois 60602
Tel: 312/553-0003 Fax: 312/553-0006
E-Mail: transport@soodan.com

* In lieu of cast-in-place anchor device shown, the Contractor has the option of drilling and epoxy grout stainless steel anchor rods of the same diameter and grade as the specified cap screws. Embedment shall be according to manufacturer's specifications.

Sheet S2-7 of 8

TYPE L
ALUMINUM RAILING
U.S. ROUTE 14
OVER MOKELER CREEK
SECTION 29R-T
McHENRY COUNTY
STA. 0+956.56
STRUCTURE NO. 056-0076
Date: February, 2005 Scale: None