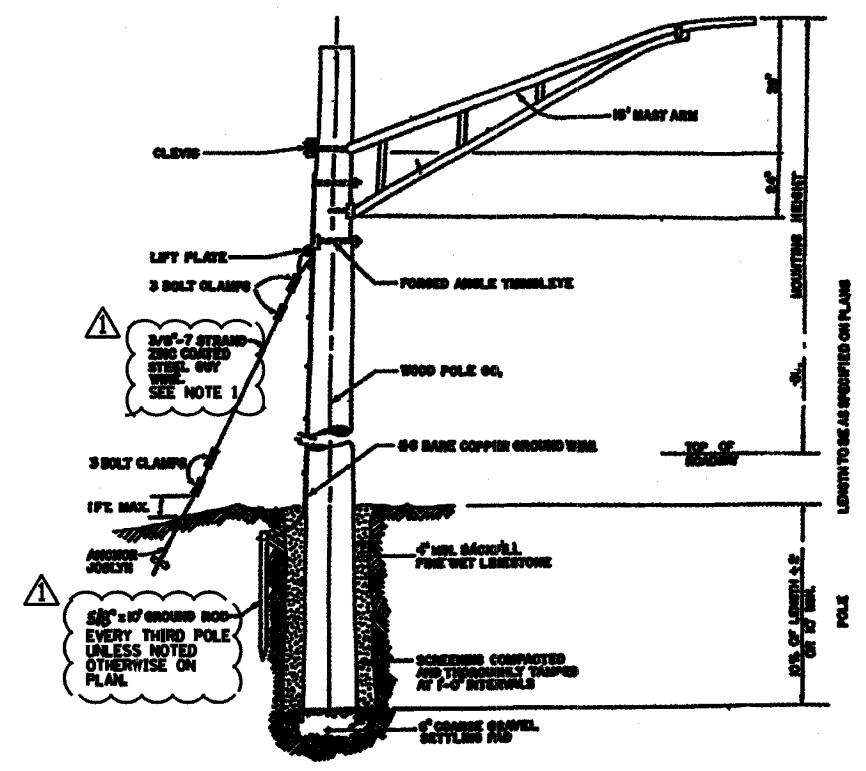


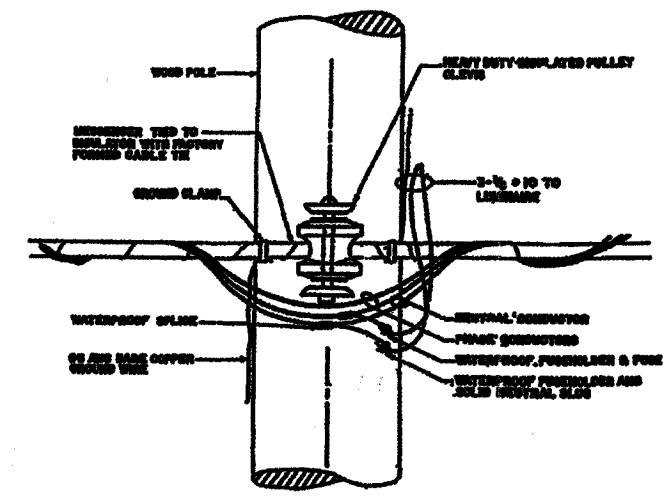
* Sheet 31 is deleted *

F.A.P. RTE.	SECTION	COUNTY	TOTAL SHEETS	SHEET NO.
066	21 (B&G) R	McHENRY	66	32
STA.		TO STA.		
FED. ROAD DIST. NO.	ILLINOIS	FED. AID PROJECT		

#62391

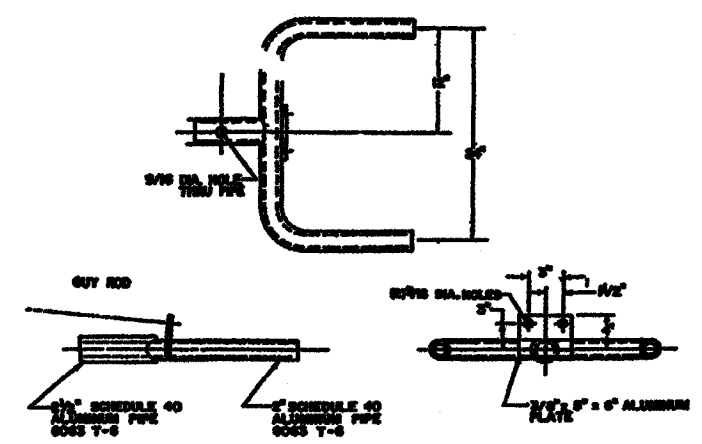


TEMPORARY LIGHT POLE DETAIL

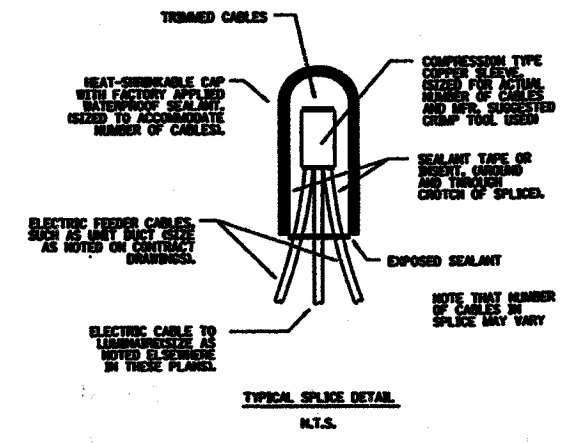


TEMPORARY LIGHT POLE GABLE ATTACHMENT DETAIL

NOTES:
1. GUY WIRES SHALL INCLUDE 6" YELLOW PLASTIC GUY GUARD WITH U.V. GUARD STABILIZERS.



DUPLEX BRACKET DETAIL



TYPICAL SPLICE DETAIL
N.T.S.

3287/TEMPLIGHTDTLS.DGN

REVISIONS	
NAME	DATE
KWN	3-31-05

ILLINOIS DEPARTMENT OF TRANSPORTATION
U.S. ROUTE 14 OVER LAWRENCE CREEK
TEMPORARY LIGHTING DETAILS
SCALE: N.T.S.
DATE: 2-28-05
DRAWN BY: JPG
CHECKED BY: GAG

