

SUMMARY OF QUANTITIES

CODE NO.	ITEM	UNIT	TOTAL	CONSTRUCTION TYPE CODE			
				ROAD	STA. 107+00 BOX CULVERT	STA. 110+00 BOX CULVERT	LIGHTING
				X028-2A	X028-2A	X028-2A	Y030-1E
20100110	TREE REMOVAL (6 TO 15 UNITS DIAMETER)	UNIT	6	6			
20100500	TREE REMOVAL, ACRES	ACRE	0.25	0.25			
20101100	TREE TRUNK PROTECTION	EACH	1	1			
20101350	TREE PRUNING (OVER 10 INCH DIAMETER)	EACH	1	1			
20200100	EARTH EXCAVATION	CU YD	2472	2472			
*20200200	ROCK EXCAVATION	CU YD	50			50	
20200410	EARTH EXCAVATION (SPECIAL)	CU YD	599	599			
20201200	REMOVAL AND DISPOSAL OF UNSUITABLE MATERIAL	CU YD	160		60	100	
20300100	CHANNEL EXCAVATION	CU YD	1245		780	465	
20400800	FURNISHED EXCAVATION	CU YD	21	21			
20700220	POROUS GRANULAR EMBANKMENT	CU YD	405		215	190	
*21101615	TOPSOIL FURNISH AND PLACE, 4"	SQ YD	8612	8612			
*25000210	SEEDING, CLASS 2A	ACRE	1.00	1.00			
*25000312	SEEDING, CLASS 4A	ACRE	0.75	0.75			
*25000400	NITROGEN FERTILIZER NUTRIENT	POUND	161	161			
*25000500	PHOSPHORUS FERTILIZER NUTRIENT	POUND	161	161			
*25000600	POTASSIUM FERTILIZER NUTRIENT	POUND	161	161			
*25100105	MULCH, METHOD 1	ACRE	1.75	1.75			
*25100630	EROSION CONTROL BLANKET	SQ YD	6552	6552			
*25200110	SODDING, SALT TOLERANT	SQ YD	2152	2152			
*25200200	SUPPLEMENTAL WATERING	UNIT	15	15			
28000250	TEMPORARY EROSION CONTROL SEEDING	POUND	2889	2889			
28000300	TEMPORARY DITCH CHECKS	EACH	24	24			
28000400	PERIMETER EROSION BARRIER	FOOT	2272	2272			

SUMMARY OF QUANTITIES

CODE NO.	ITEM	UNIT	TOTAL	CONSTRUCTION TYPE CODE			
				ROAD	STA. 107+00 BOX CULVERT	STA. 110+00 BOX CULVERT	LIGHTING
				X028-2A	X028-2A	X028-2A	Y030-1E
20200100	FILTER FABRIC FOR USE WITH RIP RAP	SQ YD	107	107			
28300400	AGGREGATE DITCH	TON	21	21			
28400100	GABIONS	CU YD	50			50	
31101200	SUB-BASE GRANULAR MATERIAL, TYPE B 4"	SQ YD	3613	3613			
35300400	PORTLAND CEMENT CONCRETE BASE COURSE 9"	SQ YD	2960	2960			
40300100	BITUMINOUS MATERIALS (PRIME COAT)	GAL	525	525			
40600300	AGGREGATE (PRIME COAT)	TON	8	8			
40600895	CONSTRUCTING TEST STRIP	EACH	2	2			
40601000	BITUMINOUS REPLACEMENT OVER PATCHES	TON	51	51			
44000100	PAVEMENT REMOVAL	SQ YD	7939	7939			
42001300	PROTECTIVE COAT	SQ YD	8	8			
44000140	BITUMINOUS REMOVAL OVER PATCHES 10"	SQ YD	592	592			
44000200	DRIVEWAY PAVEMENT REMOVAL	SQ YD	398	398			
44000500	COMBINATION CURB AND GUTTER REMOVAL	FOOT	193	193			
44201761	CLASS D PATCHES, TYPE I, 10 INCH	SQ YD	296	296			
44201765	CLASS D PATCHES, TYPE II, 10 INCH	SQ YD	296	296			
44300200	STRIP REFLECTIVE CRACK CONTROL TREATMENT	FOOT	2220	2220			
48101620	AGGREGATE SHOULDERS, TYPE B 10"	SQ YD	1547	1547			
48202800	BITUMINOUS SHOULDERS SUPERPAVE 10"	SQ YD	2285	2285			
50100300	REMOVAL OF EXISTING STRUCTURES NO. 1	EACH	1			1	
50100400	REMOVAL OF EXISTING STRUCTURES NO. 2	EACH	1		1		
50104300	CONCRETE HEADWALL REMOVAL	CU YD	1.5			1.5	
50105220	PIPE CULVERT REMOVAL	FOOT	177	146	31		

#62391

REVISIONS	
NAME	DATE

ILLINOIS DEPARTMENT OF TRANSPORTATION
 U.S. ROUTE 14 OVER LAWRENCE CREEK
SUMMARY OF QUANTITIES
 DRAWN BY CLG
 CHECKED BY JJD
 DATE: 2-15-05

* SPECIALTY ITEM

Rev. 4-14-05



Rev.

32875HT3.DGN

SUMMARY OF QUANTITIES

CODE NO.	ITEM	UNIT	TOTAL	CONSTRUCTION TYPE CODE			
				ROAD	STA. 107+00 BOX CULVERT	STA. 110+00 BOX CULVERT	LIGHTING
50200100	STRUCTURE EXCAVATION	CU YD	100		20	80	
51205200	TEMPORARY SHEET PILING	SQ FT	2005		1125	880	
51500100	NAME PLATES	EACH	2		1	1	
54001000	BOX CULVERT END SECTIONS	EACH	4		2	2	
54010507	PRECAST CONCRETE BOX CULVERT 5' x 7'	FOOT	60		60		
54010806	PRECAST CONCRETE BOX CULVERT 8' x 6'	FOOT	174		120	54	
54011205	PRECAST CONCRETE BOX CULVERT 12' x 5'	FOOT	108			108	
54104200	CORRUGATED STRUCTURAL PLATE PIPE ARCHES 51 SQ. FT	FOOT	38			38	
54200643	PIPE CULVERTS, TYPE 1, CORRUGATED STEEL OR ALUMINUM CULVERT PIPE 18"	FOOT	256	256			
54213873	STEEL END SECTIONS 18"	EACH	16	16			
60624600	CORRUGATED MEDIAN	SQ FT	76	76			
*63000005	STEEL PLATE BEAM GUARD RAIL, TYPE B	FOOT	850	850			
*63100167	TRAFFIC BARRIER TERMINAL TYPE 1, SPECIAL (TANGENT)	EACH	5	5			
*63100169	TRAFFIC BARRIER TERMINAL TYPE 1, SPECIAL (FLARED)	EACH	3	3			
63200305	STEEL PLATE BEAM GUARD RAIL REMOVAL	FOOT	313	313			
66500105	WOVEN WIRE FENCE, 4"	FOOT	181	181			
67000400	ENGINEER'S FIELD OFFICE, TYPE A	CAL MO	6	6			
67100100	MOBILIZATION	L SUM	1	1			
70100200	TRAFFIC CONTROL AND PROTECTION, STANDARD 701331	EACH	2	2			
70103815	TRAFFIC CONTROL SURVEILLANCE	CAL DA	180	180			
70300100	SHORT-TERM PAVEMENT MARKING	FOOT	792	792			

SUMMARY OF QUANTITIES

CODE NO.	ITEM	UNIT	TOTAL	CONSTRUCTION TYPE CODE			
				ROAD	STA. 107+00 BOX CULVERT	STA. 110+00 BOX CULVERT	LIGHTING
70300220	TEMPORARY PAVEMENT MARKING - LINE 4"	FOOT	8030	8030			
70300520	PAVEMENT MARKING TAPE, TYPE III, 4"	FOOT	9970	9970			
70301000	WORKZONE PAVEMENT MARKING REMOVAL	SQ FT	6266	6266			
70400100	TEMPORARY CONCRETE BARRIER	FOOT	1505	1505			
70400200	RELOCATE TEMPORARY CONCRETE BARRIER	FOOT	400	400			
*78000200	THERMOPLASTIC PAVEMENT MARKING - LINE 4"	FOOT	6293	6293			
*78100100	RAISED REFLECTIVE PAVEMENT MARKER	EACH	32	32			
*78200530	BARRIER WALL MARKERS, TYPE C	EACH	152	152			
78300100	PAVEMENT MARKING REMOVAL	SQ FT	1771	1771			
78300200	RAISED REFLECTIVE PAVEMENT MARKER REMOVAL	EACH	18	18			
*80700140	GROUND ROD, 5/8" DIA. X 10 FT	EACH	10				10
80800500	TEMPORARY WOOD POLE, 60 FT., CLASS 4	EACH	1				1
*80800525	TEMPORARY WOOD POLE, 60 FT., CLASS 4, 15 FT. MAST ARM	EACH	14				14
*81001100	UNIT DUCT, WITH 3 1/8 NO. 2 AND 1/8 NO. 4 GROUND CORD (WLD TYPE USE) 1/4" DIA. POLYETHYLENE	FOOT	20				20
*81800100	AERIAL CABLE, 3-1/8 NO. 3/0 ALUMINUM, WITH MESSENGER WIRE	FOOT	3000				3000
*82103400	LUMINAIRE, SODIUM VAPOR, HORIZONTAL MOUNT, 400 WATT	EACH	14				14
*A2002566	TREE, CARPINUS CAROLINIANA (AMERICAN HORN-BEAM), 6' HEIGHT, SHRUB FORM, BALLED AND BURLAPPED	EACH	8	8			
*B2000566	TREE, AMELANCHIER CANADENSIS (SHADBLOW SERVICEBERRY), 6' HEIGHT, SHRUB FORM, BALLED AND BURLAPPED	EACH	12	12			
B4100110	REMOVAL OF TEMPORARY LIGHTING UNITS	EACH	14				14

* SPECIALTY ITEM

Applied Technologies

Rev. 4-14-05

Rev.

REVISIONS	
NAME	DATE

ILLINOIS DEPARTMENT OF TRANSPORTATION
U.S. ROUTE 14 OVER LAWRENCE CREEK
SUMMARY OF QUANTITIES

DRAWN BY CLG
CHECKED BY JJD
DATE: 2-15-05

#62391

3287SHT3.DGN

SUMMARY OF QUANTITIES

CODE NO.	ITEM	UNIT	TOTAL	CONSTRUCTION TYPE CODE			
				ROAD	STA. 107+00 BOX CULVERT	STA. 110+00 BOX CULVERT	LIGHTING
*C2012772	SHRUB, VIBURNUM PRUNIFOLIUM, (BLACKHAW VIBURNUM), 6' HEIGHT. BALLED AND BURLAPPED	EACH	12	12			
X0322256	TEMPORARY INFORMATION SIGNING	SQ FT	51.4	51.4			
X0323000	3 CIRCUIT 210/120 PANEL	EACH	1	1			
X0323001	METER SOCKET PER CCM ED	EACH	1	1			
X0323002	TEMPORARY ELECTRICAL SERVICE CONNECTION	EACH	1	1			
X0323153	ELECTRIC CABLE IN CONDUIT, GROUND, NO. 6 16 (GREEN)	FOOT	300	300			
X0712400	TEMPORARY PAVEMENT	SQ YD	4855	4855			
X3550300	BITUMINOUS BASE COURSE SUPERPAVE 6"	SQ YD	315	315			
X3550500	BITUMINOUS BASE COURSE SUPERPAVE 8"	SQ YD	369	369			
X4021000	TEMPORARY ACCESS (PRIVATE ENTRANCE)	EACH	3	3			
X4022000	TEMPORARY ACCESS (COMMERCIAL ENTRANCE)	EACH	3	3			
X4024000	TEMPORARY ACCESS (FIELD ENTRANCE)	EACH	2	2			
X4066414	BITUMINOUS CONCRETE SURFACE COURSE, SUPERPAVE, MIX "C", N50	TON	78	78			
X4066424	BITUMINOUS CONCRETE SURFACE COURSE, SUPERPAVE, MIX "D", N50	TON	250	250			
X4066765	LEVELING BINDER (MACHINE METHOD), SUPERPAVE N50	TON	250	250			
X0710112	REMOVE TEMPORARY LIGHTING UNITS	L SUM	1	1			
Z0013798	CONSTRUCTION LAYOUT	L SUM	1	1			
Z002800	FENCE REMOVAL	FOOT	214	214			
Z0024400	FILTER FABRIC	SQ YD	181	107	74		
Z0030255	IMPACT ATTENUATORS, TEMPORARY (FULLY REDIRECTIVE, NARROW), TEST LEVEL 2	EACH	8	8			
Z0030320	IMPACT ATTENUATORS, RELOCATE (FULLY REDIRECTIVE), TEST LEVEL 2	EACH	8	8			

SUMMARY OF QUANTITIES

CODE NO.	ITEM	UNIT	TOTAL	CONSTRUCTION TYPE CODE			
				ROAD	STA. 107+00 BOX CULVERT	STA. 110+00 BOX CULVERT	LIGHTING
XX004900	TURF REINFORCEMENT MAT	SQ YD	75	75			
XX001452	CONCRETE MASONRY BULKHEAD	EACH	1		1		
*X8210405	LUMINAIRE SHIELD	EACH	1				1
Z0076600	TRAINEES	HOUR	1,000	1,000			
B0400100	ELECTRIC SERVICE INSTALLATION	EACH	1				1
B0400200	ELECTRIC UTILITY SERVICE CONNECTION	L SUM	1				1
X0323574	MAINTENANCE OF LIGHTING SYSTEM	CAL MO	6				6
X0324949	100 A FUSED DISCONNECT SWITCH NEMA 4X ENCLOSURE	EACH	1				1

162391

△ SFTY-3M

© 4080

* SPECIALTY ITEM

△ Rev. 4-14-05



REVISIONS	
NAME	DATE

ILLINOIS DEPARTMENT OF TRANSPORTATION
U.S. ROUTE 14 OVER LAWRENCE CREEK
SUMMARY OF QUANTITIES

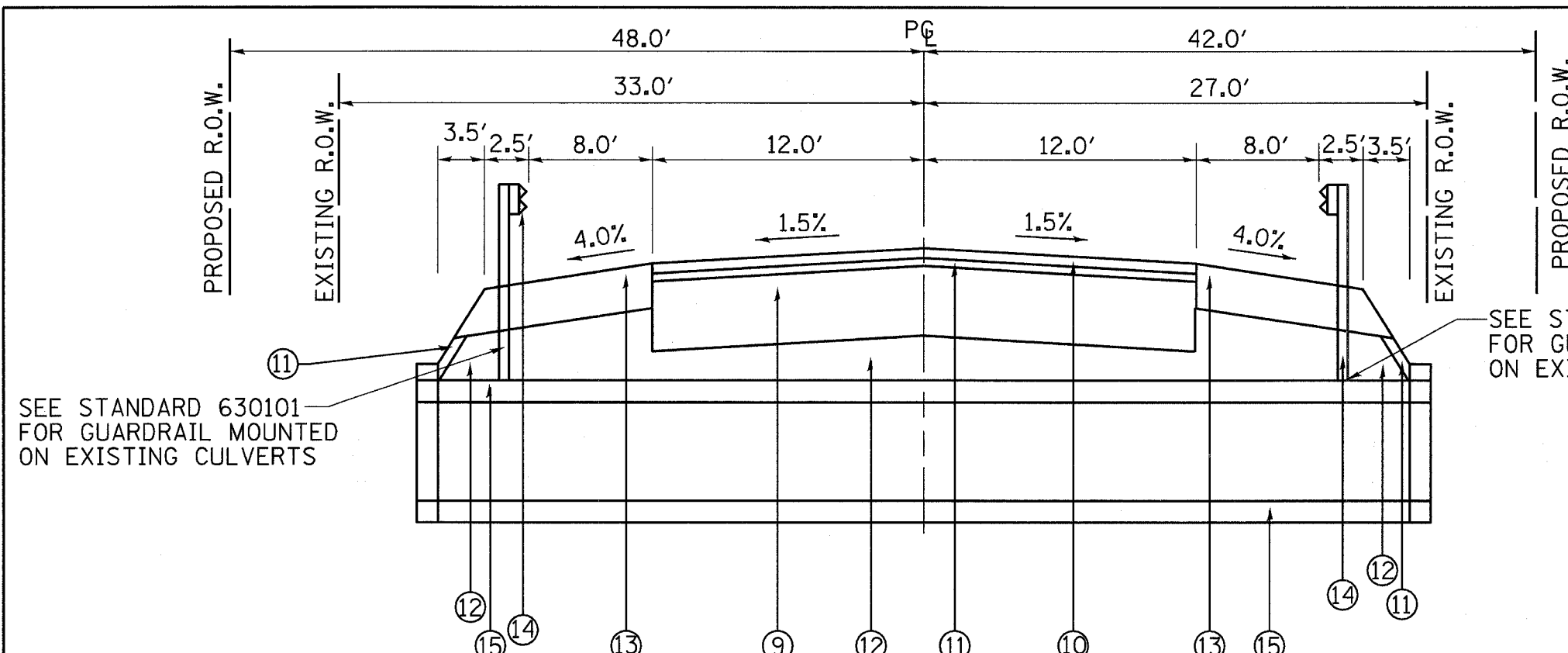
DATE: 2-15-05

DRAWN BY CLG
CHECKED BY JJD

3287SHT3.DGN

F.A.P. RTE.	SECTION	COUNTY	TOTAL SHEETS	SHEET NO.
066	21 (B&G) R	McHENRY	66	8
STA.		TO STA.		
FED. ROAD DIST. NO.		ILLINOIS FED. AID PROJECT		

#62391



SEE STANDARD 630101 FOR GUARDRAIL MOUNTED ON EXISTING CULVERTS

SEE STANDARD 630101 FOR GUARDRAIL MOUNTED ON EXISTING CULVERTS

TYPICAL SECTION LEGEND

- ⑨ -PROPOSED PORTLAND CEMENT CONCRETE BASE COURSE, 9"
- ⑩ -PROPOSED BITUMINOUS CONCRETE SURFACE COURSE, SUPERPAVE, MIX "D," N50, 1 1/2"
- ⑪ -PROPOSED LEVELING BINDER (MACHINE METHOD), SUPERPAVE, N50, 1 1/2"
- ⑫ -PROPOSED SUB-BASE GRANULAR MATERIAL, TYPE B 4" VARIES 14" TO 21" OVER CULVERTS, PAID AS 4"
- ⑬ -PROPOSED BITUMINOUS SHOULDERS SUPERPAVE 10"
- ⑭ -PROPOSED STEEL PLATE BEAM GUARD RAIL, TYPE B
- ⑮ -PROPOSED PRECAST CONCRETE BOX CULVERT

CULVERT
U.S. ROUTE 14 OVER LAWRENCE CREEK
 STA. 106+87.25 TO STA. 107+12.75
 STA. 109+83.4 TO STA. 110+16.6

BITUMINOUS MIXTURE REQUIREMENTS

MIXTURE USES	AC/PG	RAP MAX	DESIGN AIR VOIDS
BITUMINOUS CONCRETE SURFACE COURSE, SUPERPAVE, MIX "C", N50 (DRIVEWAYS, MEDIAN)	PG 64-22	15%	4% @ 50 GYR
BITUMINOUS CONCRETE SURFACE COURSE, SUPERPAVE, MIX "D", N50	PG 64-22	15%	4% @ 50 GYR
BITUMINOUS SHOULDERS, SUPERPAVE (BITUMINOUS BASE COURSE, SUPERPAVE)	PG 58-22	50%	2% @ 30 GYR
TEMPORARY PAVEMENT	PG 58-22	50%	2% @ 50 GYR
LEVELING BINDER (MACHINE METHOD) SUPERPAVE N50 (BINDER COURSE US 14)	PG 64-22	15%	4% @ 50 GYR
BINDER, IL-19mm (PAVEMENT PATCHING)	PG 64-22	15%	4% @ 70 GYR
BITUMINOUS BASE COURSE, SUPERPAVE (DRIVEWAYS)	PG 58-22	50%	2% @ 50 GYR

NOTE: THE UNIT WEIGHT USED TO CALCULATE BITUMINOUS MIX QUANTITIES IS 112 LBS./SQ YD/INCH.

REVISIONS	
NAME	DATE
KWN	3-31-05

ILLINOIS DEPARTMENT OF TRANSPORTATION
 U.S. ROUTE 14 OVER LAWRENCE CREEK
TYPICAL SECTIONS PROPOSED
 SCALE: NTS
 DRAWN BY CLG
 CHECKED BY JJD
 DATE: 2-07-05



3287TYP2.DGN

F.A.P. RTE.	SECTION	COUNTY	TOTAL SHEETS	SHEET NO.
066	21 (B&G) R	McHENRY	66	9
STA.		TO STA.		
FED. ROAD DIST. NO.		ILLINOIS FED. AID PROJECT		

#62391

TREE REMOVAL (6 TO 15 UNITS DIAMETER)

STA	UNIT
109+78, 38 RT LT	6
TOTAL	6

TREE REMOVAL, ACRES

STA TO STA	ACRE
104+00 TO 106+10 LT	0.25
TOTAL	0.25

TREE TRUNK PROTECTION

STA	EACH
108+85, 45 RT	1
TOTAL	1

TREE PRUNING (OVER 10 INCH DIAMETER)

STA	EACH
108+85 LT	1
TOTAL	1

SEEDING, CLASS 2A

STA TO STA	ACRE
98+00 TO 102+53 RT	0.11
104+50 TO 106+20 LT	0.05
110+17 TO 113+47 LT	0.33
111+41 TO 113+41 RT	0.04
113+57 TO 116+31 RT	0.06
114+00 TO 120+10 LT	0.30
116+46 TO 121+00 RT	0.11
TOTAL	1.00

SEEDING, CLASS 4A

STA TO STA	ACRE
99+00 TO 104+33 LT	0.24
104+50 TO 106+87 LT	0.15
106+09 TO 106+87 RT	0.04
110+08 TO 113+41 RT	0.18
113+57 TO 116+31 RT	0.14
TOTAL	0.75

NITROGEN FERTILIZER NUTRIENT

STA TO STA	POUND
98+00 TO 106+87 RT	26
99+00 TO 106+87 LT	29
107+09 TO 109+81 LT	16
107+11 TO 109+96 RT	8
110+08 TO 121+00 RT	36
110+17 TO 120+10 LT	46
TOTAL	161

PHOSPHORUS FERTILIZER NUTRIENT

STA TO STA	POUND
98+00 TO 106+87 RT	26
99+00 TO 106+87 LT	29
107+09 TO 109+81 LT	16
107+11 TO 109+96 RT	8
110+08 TO 121+00 RT	36
110+17 TO 120+10 LT	46
TOTAL	161

POTASSIUM FERTILIZER NUTRIENT

STA TO STA	POUND
98+00 TO 106+87 RT	26
99+00 TO 106+87 LT	29
107+09 TO 109+81 LT	16
107+11 TO 109+96 RT	8
110+08 TO 121+00 RT	36
110+17 TO 120+10 LT	46
TOTAL	161

MULCH, METHOD 1

STA TO STA	ACRE
98+00 TO 121+00	1.75
TOTAL	1.75

EROSION CONTROL BLANKET

STA TO STA	SQ YD
98+00 TO 102+53 RT	430
99+00 TO 104+33 LT	843
104+50 TO 106+87 LT	684
106+09 TO 106+87 RT	140
110+08 TO 113+41 RT	796
110+17 TO 113+47 LT	1292
113+57 TO 116+31 RT	721
114+00 TO 120+10 LT	1220
116+46 TO 121+00 RT	426
TOTAL	6552

SODDING, SALT TOLERANT

STA TO STA	SQ YD
102+68 TO 104+86 RT	583
105+03 TO 106+09 RT	255
107+09 TO 108+56 LT	332
107+11 TO 107+44 RT	75
107+80 TO 109+96 RT	406
108+71 TO 109+81 LT	501
TOTAL	2152

SUPPLEMENTAL WATERING

STA	UNIT
UNDISTRIBUTED	15
TOTAL	15

TEMPORARY EROSION CONTROL SEEDING

STA TO STA	POUND
98+00 TO 121+00	2889
TOTAL	2889

TEMPORARY DITCH CHECKS

STA	EACH
104+00 RT	1
104+25 RT	1
104+49 RT	1
105+50 RT	1
106+43 RT	1
106+58 RT	1
106+66 RT	1
106+75 RT	1
106+83 RT	1
107+67 LT	1
108+08 LT	1
108+77 LT	1
108+92 LT	1
109+00 RT	1
109+50 RT	1
110+28 LT	1
110+32 RT	1
111+00 LT	1
111+00 RT	1
112+00 LT	1
112+00 RT	1
113+00 RT	1
114+00 RT	1
114+48 RT	1
TOTAL	24

PERIMETER EROSION BARRIER

STA TO STA	FEET
104+00 TO 104+86 RT	85
104+00 TO 104+34 LT	50
104+50 TO 106+88 LT	249
105+03 TO 106+88 RT	202
107+08 TO 108+53 LT	130
107+10 TO 107+45 RT	32
107+80 TO 109+99 RT	213
108+70 TO 109+85 LT	224
110+06 TO 113+41 RT	390
110+16 TO 111+74 LT	223
111+91 TO 113+47 LT	188
113+57 TO 115+10 RT	153
114+29 TO 115+10 LT	133
TOTAL	2272

FILTER FABRIC

STA TO STA	SQ YD
107+12 TO 107+30	50
109+75 TO 109+94	57
110+00 CULVERT	74
TOTAL	181

AGGREGATE DITCH

STA TO STA	TON
107+12 TO 107+30	10
109+75 TO 109+94	11
TOTAL	21

SUB-BASE GRANULAR MATERIAL, TYPE B, 4"

STA TO STA	SQ YD
104+00 TO 106+87.25	894
106+87.25 TO 107+12.75	148
107+12.75 TO 109+83.4	843
109+83.4 TO 110+16.6	192
110+16.6 TO 115+10	1536
TOTAL	3613

PORTLAND CEMENT CONCRETE BASE COURSE, 9"

STA TO STA	SQ YD
104+00 TO 115+10	2960
TOTAL	2960

3287Schedule.dgn

REVISIONS	
NAME	DATE
KWN	3-31-05

ILLINOIS DEPARTMENT OF TRANSPORTATION
 U.S. ROUTE 14 OVER LAWRENCE CREEK
 SCHEDULE OF QUANTITIES
 DRAWN BY CLG
 CHECKED BY JJD
 DATE: 2-17-05



F.A.P. RTE.	SECTION	COUNTY	TOTAL SHEETS	SHEET NO.
066	21 (B&G) R	McHENRY	66	10
STA.		TO STA.		
FED. ROAD DIST. NO.		ILLINOIS	FED. AID PROJECT	

#62391

BITUMINOUS MATERIALS (PRIME COAT)

STA TO STA	GAL
104+00 TO 115+10	525
TOTAL	525

AGGREGATE (PRIME COAT)

STA TO STA	TONS
104+00 TO 115+10	8
TOTAL	8

CONSTRUCTING TEST STRIP

LOCATION	EACH
LEVELING BINDER	1
BITUMINOUS CONCRETE SURFACE COURSE	1
TOTAL	2

BITUMINOUS REPLACEMENT OVER PATCHES

LOCATION	TON
UNDISTRIBUTED	51
TOTAL	51

PROTECTIVE COAT

STA	SQ YD
113+74 LT	8
TOTAL	8

PAVEMENT REMOVAL

STA TO STA	SQ YD
MOT STAGE I	
104+00 TO 115+10 LT	2714
MOT STAGE II	
104+00 TO 115+10 RT	370
97+00 TO 122+10 RT TEMP. PAVEMENT	4063
POST MOT STAGE II	
99+00 TO 120+10 LT TEMP. PAVEMENT	792
TOTAL	7939

BITUMINOUS REMOVAL OVER PATCHES 10"

LOCATION	SQ YD
UNDISTRIBUTED	592
TOTAL	592

DRIVEWAY PAVEMENT REMOVAL

STA	SQ YD
102+62 RT	42
107+66 RT	123
109+05 RT	96
109+50 LT	77
116+41 RT	60
TOTAL	398

COMBINATION CURB AND GUTTER REMOVAL

STA TO STA	FOOT
107+29 TO 107+48 RT	30
107+81 TO 108+87 RT	135
109+19 TO 109+40 RT	28
TOTAL	193

CLASS D PATCHES, TYPE I, 10"

LOCATION	SQ YD
UNDISTRIBUTED	296
TOTAL	296

CLASS D PATCHES, TYPE II, 10"

LOCATION	SQ YD
UNDISTRIBUTED	296
TOTAL	296

STRIP REFLECTIVE CRACK CONTROL TREATMENT

STA TO STA	FOOT
104+00 TO 115+10 (2)	2200
TOTAL	2200

AGGREGATE SHOULDERS, TYPE B 10"

STA TO STA (SHOULDER RESTORATION AFTER MOT)	SQ YD
97+00 TO 104+00 RT	452
99+00 TO 104+00 LT	278
115+10 TO 120+00 RT	289
115+10 TO 120+10 LT	339
120+00 TO 122+10 RT	189
TOTAL	1547

BITUMINOUS SHOULDERS SUPERPAVE 10"

STA TO STA	SQ YD
104+00 TO 115+10 RT	987
104+00 TO 115+10 LT	987
105+95 TO 107+90 LT GUARDRAIL	86
106+10 TO 107+47 RT GUARDRAIL	62
108+13 TO 111+08 RT GUARDRAIL	84
108+92 TO 110+93 LT GUARDRAIL	79
TOTAL	2285

PIPE CULVERT REMOVAL

STA	FOOT
97+50 RT	26
102+60 RT	34
104+65 LT	28
104+95 RT	26
107+00	31
116+40 RT	32
TOTAL	177

PIPE CULVERTS, TYPE 1, CORRUGATED STEEL OR ALUMINUM CULVERT PIPE 18"

STA	FOOT
97+50 RT	24
102+62 RT	38
104+50 LT	26
105+00 RT	28
107+66 RT	44
111+82 LT	34
113+50 RT	24
116+41 RT	38
TOTAL	256

STEEL END SECTIONS, 18"

STA	EACH
97+50 RT	2
102+62 RT	2
104+50 LT	2
105+00 RT	2
107+66 RT	2
111+82 LT	2
113+50 RT	2
116+41 RT	2
TOTAL	16

CORRUGATED MEDIAN

STA	SQ FT
113+71 LT	76
TOTAL	76

STEEL PLATE BEAM GUARD RAIL, TYPE B

STA TO STA	FOOT
105+95 TO 107+90 LT	197
106+10 TO 107+47 RT	153
108+13 TO 111+08 RT	297
108+92 TO 110+93 LT	203
TOTAL	850

TRAFFIC BARRIER TERMINAL, TYPE 1, SPECIAL (TANGENT)

STA	EACH
105+95 LT	1
107+47 RT	1
108+13 RT	1
108+92 LT	1
111+08 RT	1
TOTAL	5

TRAFFIC BARRIER TERMINAL, TYPE 1, SPECIAL (FLARED)

STA	EACH
106+10 RT	1
107+90 LT	1
110+93 LT	1
TOTAL	3

STEEL PLATE BEAM GUARD RAIL REMOVAL

STA TO STA	FOOT
106+26 TO 107+94 LT	168
109+62 TO 110+42 RT	80
109+65 TO 110+30 LT	65
TOTAL	313

WOVEN WIRE FENCE, 4'

STA TO STA	FOOT
104+51 TO 106+32 LT	181
TOTAL	181

ENGINEER'S FIELD OFFICE, TYPE A

LOCATION	CAL MO
PROJECT	6
TOTAL	6

TRAFFIC CONTROL & PROTECTION, STANDARD 701331

LOCATION	EACH
STAGE I	1
STAGE II	1
TOTAL	2

TRAFFIC CONTROL SURVEILLANCE

LOCATION	CAL DA
PROJECT	180
TOTAL	180

SHORT TERM PAVEMENT MARKING

STA TO STA	FOOT
PRIME MATERIAL	
98+60 TO 120+50 YELLOW CENTERLINE	200
104+00 TO 115+10 WHITE EDGE LINE (2)	96
BINDER COURSE	
98+60 TO 120+50 YELLOW CENTERLINE	200
104+00 TO 115+10 WHITE EDGE LINE (2)	96
SURFACE COURSE	
104+00 TO 115+10 YELLOW CENTERLINE	104
104+00 TO 115+10 WHITE EDGE LINE (2)	96
TOTAL	792

TEMPORARY PAVEMENT MARKING-LINE 4"

STA TO STA	FOOT
STAGE I	
104+00 TO 115+10 DOUBLE YELLOW	2220
97+00 TO 122+10 RT WHITE EDGELINE	2510
104+00 TO 115+10 LT WHITE EDGE LINE	1110
STAGE II	
98+60 to 120+50 WHITE EDGELINE	2190
TOTAL	8030

PAVEMENT MARKING TAPE, TYPE III, 4"

STA TO STA	FOOT
STAGE I	
97+00 TO 102+00 DOUBLE YELLOW	1000
117+10 TO 122+10 DOUBLE YELLOW	1000
97+00 TO 104+00 LT WHITE EDGELINE	700
115+00 TO 122+10 LT WHITE EDGE LINE	700
STAGE II	
98+60 to 120+50 DOUBLE YELLOW	4380
98+60 to 120+50 RT WHITE EDGELINE	2190
TOTAL	9970

WORK ZONE PAVEMENT MARKING REMOVAL

STA TO STA	SQ FT
STAGE I	
97+00 TO 122+10 DOUBLE YELLOW	1673
97+00 TO 122+10 WHITE EDGELINE (2)	1673
STAGE II	
98+60 TO 120+50 DOUBLE YELLOW	1460
98+60 TO 120+50 WHITE EDGELINE (2)	1460
TOTAL	6266

TEMPORARY CONCRETE BARRIER

STA TO STA	FOOT
STAGE I	
106+75 TO 109+25, 10 RT	250
109+75 TO 110+25, 10 RT	50
106+75 TO 107+25, 36 RT	50
109+75 TO 110+25, 36 RT	50
SUBTOTAL STAGE I	400
STAGE II	
98+60 TO 104+20, LT TAPER	560
105+00 TO 107+45, 5 RT	245
107+80 TO 112+90, 5 RT	510
112+90 TO 113+40, TAPER	50
113+60 TO 115+00, TAPER	140
SUBTOTAL STAGE II	1505
MAXIMUM BARRIER REQUIRED	1505



REVISIONS	
NAME	DATE
KWN	4-11-05

ILLINOIS DEPARTMENT OF TRANSPORTATION
U.S. ROUTE 14 OVER LAWRENCE CREEK
SCHEDULE OF QUANTITIES

DATE: 2-17-05

DRAWN BY CLG
CHECKED BY JJD

3287Schedule.e.DGN

F.A.P. RTE.	SECTION	COUNTY	TOTAL SHEETS	SHEET NO.
066	21 (B&G) R	McHENRY	66	11
STA.		TO STA.		
FED. ROAD DIST. NO.	ILLINOIS	FED. AID PROJECT		

#62391

RELOCATE TEMPORARY CONCRETE BARRIER

STA TO STA	FOOT
STAGE I TO STAGE II	400
TOTAL	400

THERMOPLASTIC PAVEMENT MARKING- LINE 4"

STA TO STA	FOOT
97+00 TO 122+10 SINGLE YELLOW DASHED	628
97+00 TO 103+45 SINGLE YELLOW SOLID	645
97+00 TO 122+10 WHITE EDGELINE (2)	5020
TOTAL	6293

RAISED REFLECTIVE PAVEMENT MARKER

STA TO STA	EACH
97+00 TO 122+10	32
TOTAL	32

BARRIER WALL MARKERS, TYPE C

LOCATION	EACH
STAGE I	32
STAGE II	120
TOTAL	152

PAVEMENT MARKING REMOVAL

STA TO STA	SQ FT
97+00 TO 104+00	467
118+10 TO 122+10	467
97+00 TO 122+10 RT	837
TOTAL	1771

RAISED REFLECTIVE PAVEMENT MARKER REMOVAL

STA TO STA	EACH
97+00 TO 104+00	9
115+10 TO 122+10	9
TOTAL	18

TREE, CARPINUS CAROLINIANA (AMERICAN HORNBEAM), 6' HEIGHT, SHRUB FORM, BALLED AND BURLAPPED

STA	EACH
106+00 37' LT	1
106+20 37' LT	1
106+40 37' LT	1
106+34 36' RT	1
106+54 36' RT	1
110+68 34' RT	1
110+88 34' RT	1
111+08 34' RT	1
TOTAL	8

TREE, AMELANCHIER CANADENSIS (SHADBLOW SERVICEBERRY), 6' HEIGHT, SHRUB FORM, BALLED AND BURLAPPED

STA	EACH
104+46 32' RT	1
104+66 32' RT	1
105+26 32' RT	1
107+46 35' LT	1
107+66 35' LT	1
107+86 35' LT	1
108+06 35' LT	1
109+70 32' LT	1
112+31 38' LT	1
112+51 38' LT	1
112+71 38' LT	1
112+91 38' LT	1
TOTAL	12

SHRUB, VIBURNUM PRUNIFOLIUM (BLACKHAWK VIBURNUM), 6' HEIGHT, BALLED AND BURLAPPED

STA	EACH
104+22 38' LT	1
104+88 38' LT	1
105+08 38' LT	1
108+28 38' LT	1
109+16 40' LT	1
109+36 40' LT	1
111+00 48' LT	1
111+20 48' LT	1
114+54 37' RT	1
114+62 32' LT	1
114+74 37' RT	1
114+82 32' LT	1
TOTAL	12

TEMPORARY INFORMATION SIGNING

LOCATION	SQ FT
2 UNDISTRIBUTED	51.4
TOTAL	51.4

TEMPORARY PAVEMENT

LOCATION	SQ YD
STAGE I DETOUR	4063
STAGE II DETOUR	792
TOTAL	4855

TEMPORARY ACCESS (PRIVATE ENTRANCE)

STA	EACH
102+62 RT	1
108+62 LT	1
116+41 RT	1
TOTAL	3

TEMPORARY ACCESS (COMMERCIAL ENTRANCE)

STA	EACH
107+66 RT	1
110+60 LT	1
113+74 LT	1
TOTAL	3

TEMPORARY ACCESS (FIELD ENTRANCE)

STA	EACH
104+66	1
104+98	1
TOTAL	2

BITUMINOUS BASE COURSE SUPERPAVE 6"

STA	SQ YD
102+62 RT	52
104+50 LT	52
104+95 RT	50
108+62 LT	50
113+50 RT	50
116+41 RT	61
TOTAL	315

BITUMINOUS BASE COURSE SUPERPAVE 8"

STA	SQ YD
107+66 RT	76
111+82 LT	80
113+74 LT	213
TOTAL	369

BITUMINOUS CONCRETE SURFACE COURSE, SUPERPAVE, MIX "C," N50

STA	TONS
97+50 RT	6
102+62 RT	6
104+50 LT	6
104+95 RT	6
107+66 RT	5
108+62 LT	6
111+82 LT	9
113+50 RT	6
113+74 LT	21
116+41 RT	7
TOTAL	78

BITUMINOUS CONCRETE SURFACE COURSE, SUPERPAVE, MIX "D," N50

STA TO STA	TONS
104+00 TO 115+10	250
TOTAL	250

LEVELING BINDER (MACHINE METHOD), SUPERPAVE N50

STA TO STA	TONS
104+00 TO 115+10	248
106+87.25 TO 107+12.75 RT	1
106+87.25 TO 107+12.75 LT	1
109+83.4 TO 110+16.6 RT	1
109+83.4 TO 110+16.6 LT	1
TOTAL	252

TEMPORARY TRAFFIC BARRIER TERMINAL, TYPE 3 SPECIAL

STA	EACH
STAGE I	
106+75, 10 RT	1
106+75, 36 RT	1
107+25, 36 RT	1
109+25, 10 RT	1
109+75, 10 RT	1
109+75, 36 RT	1
110+25, 10 RT	1
110+25, 36 RT	1
STAGE II	
106+75, 5 RT	1
107+25, 5 RT	1
109+75, 5 RT	1
110+25, 5 RT	1
TOTAL	12

CONSTRUCTION LAYOUT

LOCATION	LUMP SUM
PROJECT	1

FENCE REMOVAL

STA TO STA	FOOT
104+51 TO 106+32 LT	214
TOTAL	214

IMPACT ATTENUATORS, TEMPORARY (FULLY REDIRECTIVE, NARROW) TEST LEVEL 2

STA	EACH
STAGE I	
106+75 RT	1
106+75 LT	1
107+25 RT	1
109+25 RT	1
109+75 RT	1
109+75 LT	1
110+25 RT	1
110+25 LT	1
TOTAL	8

IMPACT ATTENUATORS, RELOCATE (FULLY REDIRECTIVE) TEST LEVEL 2

STA	EACH
STAGE II	
98+60 LT	1
104+20 LT	1
105+00 RT	1
107+45 RT	1
107+80 RT	1
113+40 RT	1
113+60 RT	1
115+00 RT	1
TOTAL	8

TURF REINFORCEMENT MAT

STA TO STA	SQ YD
107+15 TO 107+48 RT	75
TOTAL	75

3287Schedule.dgn



REVISIONS

NAME	DATE
KWN	4-11-05

ILLINOIS DEPARTMENT OF TRANSPORTATION
 U.S. ROUTE 14 OVER LAWRENCE CREEK
 SCHEDULE OF QUANTITIES
 DRAWN BY CLG
 CHECKED BY JJD
 DATE: 2-17-05

F.A.P. RTE.	SECTION	COUNTY	TOTAL SHEETS	SHEET NO.
066	21 (B&G) R	MCHENRY	66	20
STA. 85+00 TO STA. 105+00				
FED. ROAD DIST. NO.		ILLINOIS FED. AID PROJECT		

#62391

PRE STAGE II WORK

1. ADD TEMPORARY PAVEMENT WIDENING STA. 99+00 TO STA. 106+20 LT AND STA. 112+90 TO STA. 120+10 LT.

MAJOR WORK STAGE II

1. SHIFT TRAFFIC FROM STAGE I LANES TO STAGE II LANES (WEST SIDE LANES).
2. REMOVAL OF INLET IS INCIDENTAL TO REMOVAL STRUCTURE AT STA. 107+00. REMOVAL OF BULKHEAD AND TEMPORARY CULVERT ARE INCIDENTAL TO REMOVAL OF STRUCTURE AT STA. 110+00. CONSTRUCT EASTERN PORTION OF EACH BOX CULVERT, STA. 107+00 AND STA. 110+00.
3. REMOVE, REGRADE AND RECONSTRUCT EAST PORTION OF US ROUTE 14, INCLUDING REMOVAL OF STAGE I TEMPORARY PAVEMENT WIDENING.
4. STA. 97+00 TO STA. 104+00 RT AND STA. 115+10 TO 122+10 RT REGRADE DITCH CROSS SECTION TO ORIGINAL SECTION, RECONSTRUCT AGGREGATE SHOULDER, FOLLOW EROSION & SEDIMENT CONTROL AND LANDSCAPE PLANS. RESTORE DR. AT STA. 97+50 RT.

POST STAGE II WORK

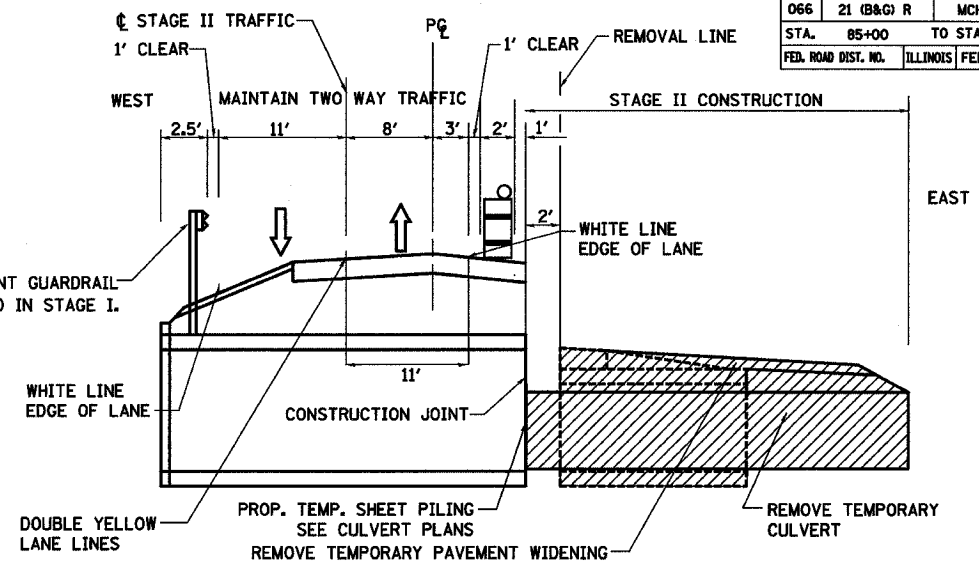
1. AFTER TRAFFIC IS SHIFTED TO NORMAL: REMOVE STAGE II TEMPORARY PAVEMENT WIDENING.
2. STA. 99+00 TO STA. 106+20 LT. AND STA. 112+90 TO STA. 120+10 LT. REGRADE DITCH TO ORIGINAL SECTION, RECONSTRUCT AGGREGATE SHOULDER, FOLLOW EROSION & SEDIMENT CONTROL AND LANDSCAPE PLANS.
3. INSTALL BALANCE OF GUARDRAIL PLACEMENT STA. 105+95 TO STA. 106+20 LT.
4. COMPLETE SURFACE COURSE BITUMINOUS PAVEMENT. USE STRIP REFLECTIVE CRACK CONTROL TREATMENT.

NOTES:

1. LOCATIONS OF ADVANCED WARNING SIGNS, TEMPORARY CONCRETE BARRIER, AND ALL OTHER TRAFFIC CONTROL DEVICES FOR STAGE II WORK SHALL BE AS SHOWN ON THIS PLAN SHEET. THIS WORK SHALL BE IN ACCORDANCE WITH HIGHWAY STANDARDS 701331 AND 702001. WORK SHALL NOT BEGIN UNTIL ALL TRAFFIC CONTROL DEVICES ARE IN PLACE AND APPROVED BY THE ENGINEER.
2. THE CONTRACTOR SHALL MAINTAIN ACCESS TO ALL PRIVATE AND COMMERCIAL ENTRANCES AND SIDESTREETS.
3. ALL ADVANCED WARNING SIGNS ON THIS SHEET ARE TO BE POST MOUNTED.
4. THE STATIONING FOR SIGNS ARE APPROXIMATE. ADJUST LOCATIONS AS NEEDED TO AVOID SIDEROADS, DRIVEWAYS, AND OTHER OBSTACLES.
5. THE MOT AS SHOWN IN THE PLANS SHALL BE INCLUDED IN COST OF TRAFFIC CONTROL AND PROTECTION, STANDARD 701331.

SYMBOLS

- CONSTRUCTION AREA
- 10" TEMPORARY PAVEMENT
- TEMPORARY CONCRETE BARRIER
- DRUMS WITH MONODIRECTIONAL STEADY BURNING LIGHTS
- SIGN
- IMPACT ATTENUATORS, TEMPORARY (FULLY REDIRECTIVE, NARROW)
- TYPE III BARRICADES WITH MONODIRECTIONAL FLASHING LIGHTS
- DIRECTION OF TRAVEL
- VERTICAL PANEL



STAGE II TYPICAL SECTION (LOOKING NORTH)

TEMPORARY PAVEMENT MARKING TAPE, TYPE III, 4", SOLID, WHITE STA. 98+60 TO STA. 120+50 RT.

TEMPORARY PAVEMENT WIDENING

TEMPORARY CONCRETE BARRIER, STA. 98+60 TO STA. 104+20, LT

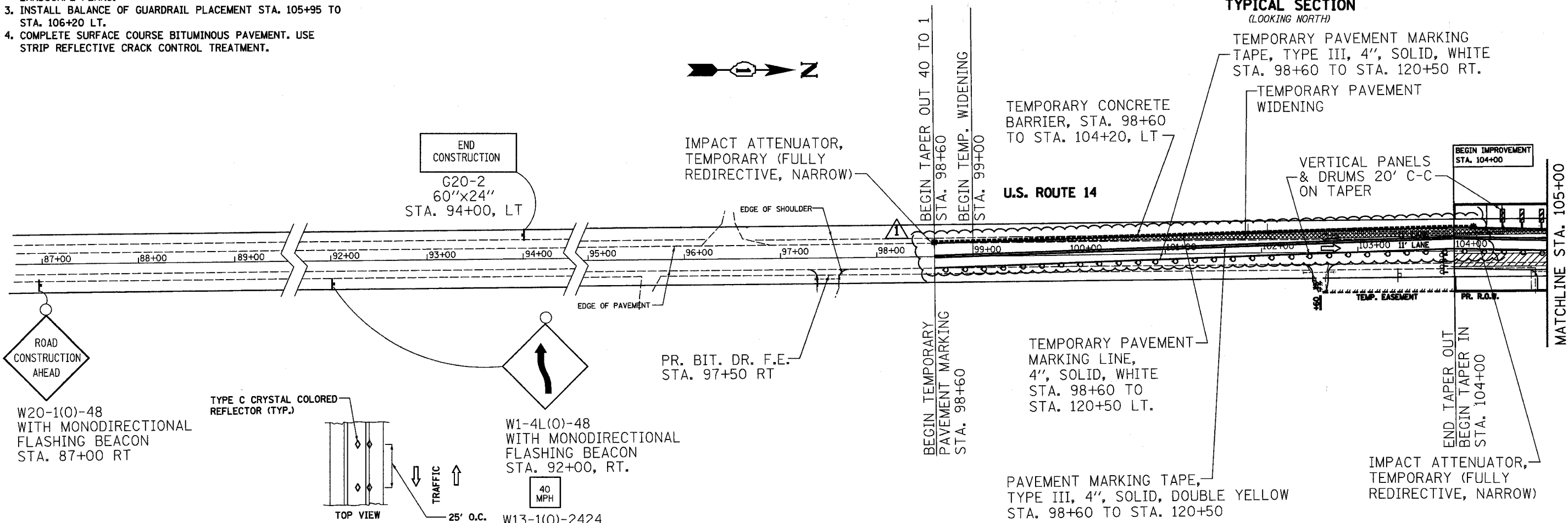
VERTICAL PANELS & DRUMS 20' C-C ON TAPER

U.S. ROUTE 14

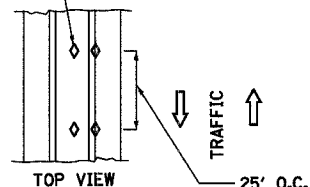
TEMPORARY PAVEMENT MARKING LINE, 4", SOLID, WHITE STA. 98+60 TO STA. 120+50 LT.

PAVEMENT MARKING TAPE, TYPE III, 4", SOLID, DOUBLE YELLOW STA. 98+60 TO STA. 120+50

IMPACT ATTENUATOR, TEMPORARY (FULLY REDIRECTIVE, NARROW)



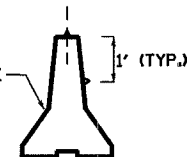
TYPE C CRYSTAL COLORED REFLECTOR (TYP.)



W1-4L(0)-48 WITH MONODIRECTIONAL FLASHING BEACON STA. 92+00, RT.

40 MPH W13-1(0)-2424

TEMPORARY CONCRETE BARRIER



BARRIER WALL REFLECTORS

REMOVE EXISTING PAVEMENT MARKINGS STA. 98+60 TO STA. 104+00 LT STA. 115+10 TO STA. 120+50 LT



REVISIONS	
NAME	DATE
KWN	4-11-05

ILLINOIS DEPARTMENT OF TRANSPORTATION
U.S. ROUTE 14 OVER LAWRENCE CREEK
MAINTENANCE OF TRAFFIC STAGE II

SCALE: 1" = 50'
DATE: 2-10-05

DRAWN BY: CLG
CHECKED BY: JUD



3287TRAFF2.DGN

F.A.P. RTE.	SECTION	COUNTY	TOTAL SHEETS	SHEET NO.
066	21 (B&G) R	McHENRY	66	29
STA.		TO STA.		
FED. ROAD DIST. NO.	ILLINOIS	FED. AID PROJECT		

#62391

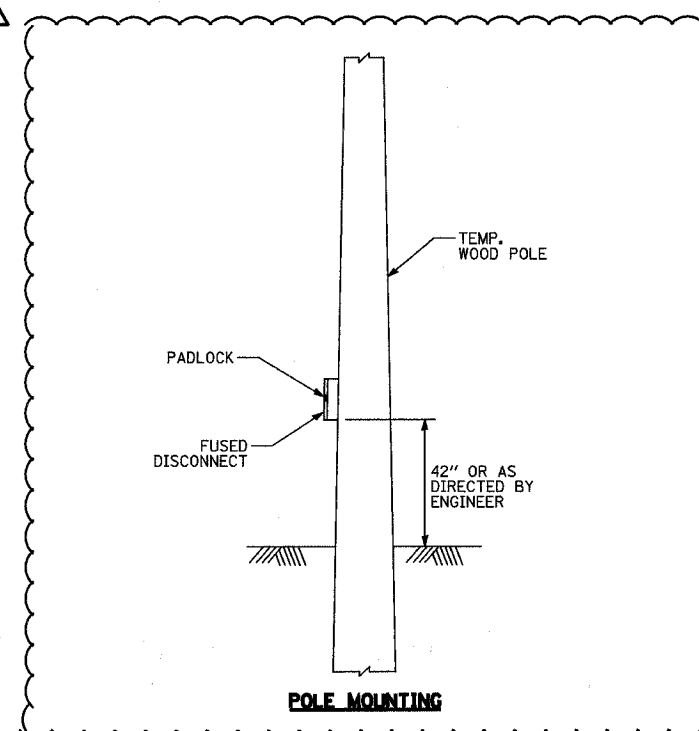
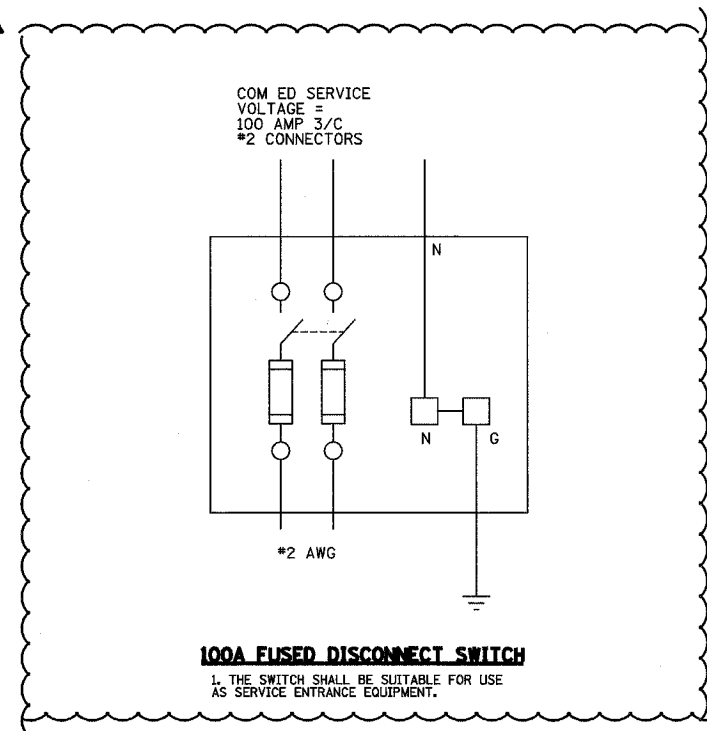
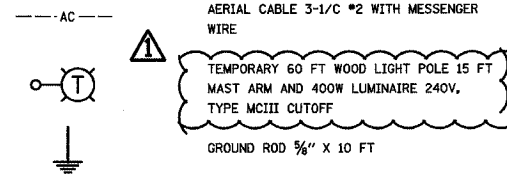
GENERAL NOTES

- 1- ALL WORK SHALL CONFORM TO THE LATEST NATIONAL ELECTRIC CODE AND IDOT STANDARD SPECIFICATIONS.
- 2- ALL ELECTRICAL EQUIPMENT AND DEVICES SHALL BE U.L. LISTED AND LABELED.
- 3- ALL CIRCUIT WIRES SHALL BE LABELED AND IDENTIFIED.
- 4- REFER TO SHEET STAGE I LIGHTING PLAN FOR ADDITIONAL INFORMATION.



- 5- EVERY THIRD LIGHT POLE ASSEMBLY SHALL BE GROUNDED. SEE TEMPORARY LIGHTING DETAILS SHEET.
- 6- SERVICE NEUTRAL CONDUCTOR TO BE BONDED AT SERVICE ENTRANCE EQUIPMENT ONLY, PER N.E.C. ARTICLE 250.

LEGEND



3287/TEMPLIGHTD.TLS.DGN



REVISIONS	
NAME	DATE
KWN	4-11-05

ILLINOIS DEPARTMENT OF TRANSPORTATION
 U.S. ROUTE 14 OVER LAWRENCE CREEK
**TEMPORARY LIGHTING NOTES, LEGEND,
 AND POLE MOUNTING DETAIL**

SCALE: N.T.S.
 DATE: 3-09-05

DRAWN BY: JPG
 CHECKED BY: GAG




F.A.P. RTE.	SECTION	COUNTY	TOTAL SHEETS	SHEET NO.
066	21 (B&G) R	MCHENRY	66	30
STA. 95+00	TO STA. 126+00			
FED. ROAD DIST. NO.	ILLINOIS	FED. AID PROJECT		

#62391

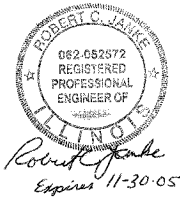
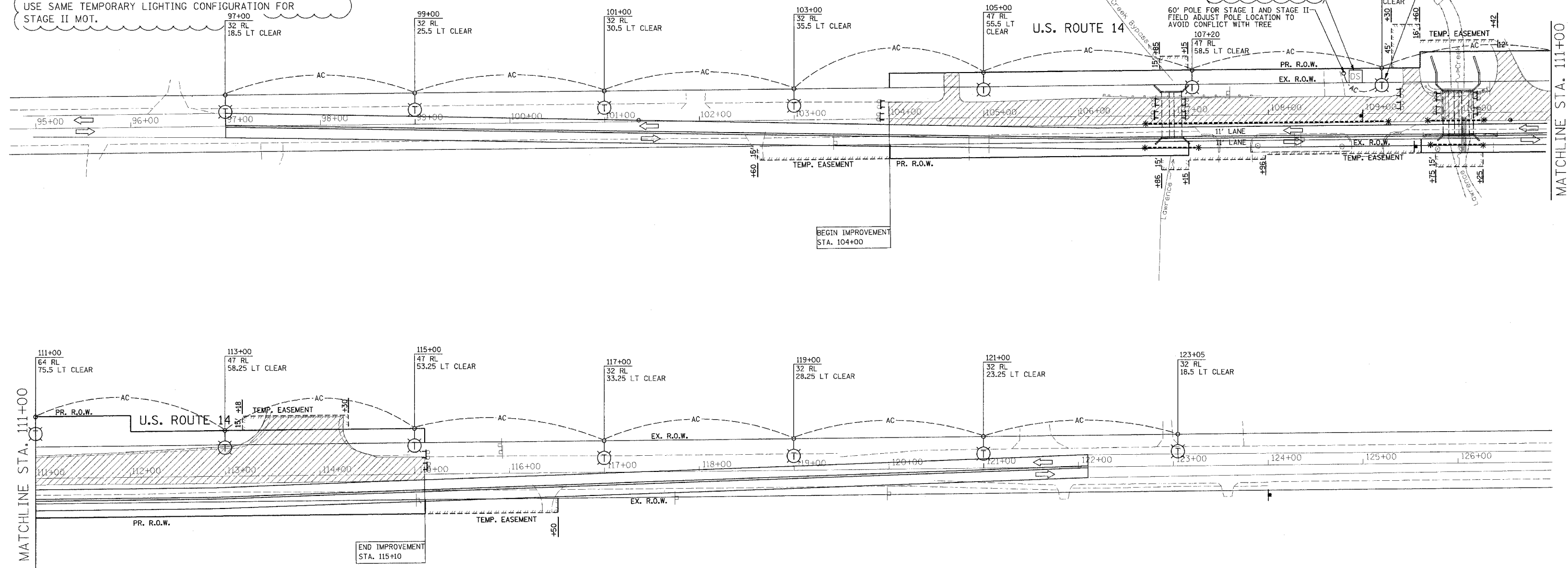
TEMPORARY LIGHTING NOTES:

1. REFER TO DETAILS FOR ADDITIONAL INFORMATION.
2. CONTRACTOR SHALL VERIFY POLE, DISTRIBUTION PANEL, AND METERING SOCKET LOCATIONS SHOWN, PRIOR TO INSTALLATION.
3. UNLESS OTHERWISE INDICATED, ALL ITEMS AND WORK SHOWN ON THIS PLAN ARE PROPOSED NEW ITEMS OF WORK.
4. ATTACH EXTERNAL LIGHT SHIELD TO FIXTURE REFERENCING THIS NOTE.

SYMBOLS

-  CONSTRUCTION AREA
- RL DISTANCE FROM REFERENCE LINE TO CENTER OF POLE
- CLEAR DISTANCE FROM EDGE OF TRAVELED PAVEMENT (MOT LANE) TO FACE OF POLE

5. LIGHTING CONFIGURATION SHOWS LANES FOR STAGE I MOT, USE SAME TEMPORARY LIGHTING CONFIGURATION FOR STAGE II MOT.



Applied Technologies

REVISIONS	
NAME	DATE
KWN	3-31-05

ILLINOIS DEPARTMENT OF TRANSPORTATION
 U.S. ROUTE 14 OVER LAWRENCE CREEK
TEMPORARY LIGHTING PLAN STAGE I & II

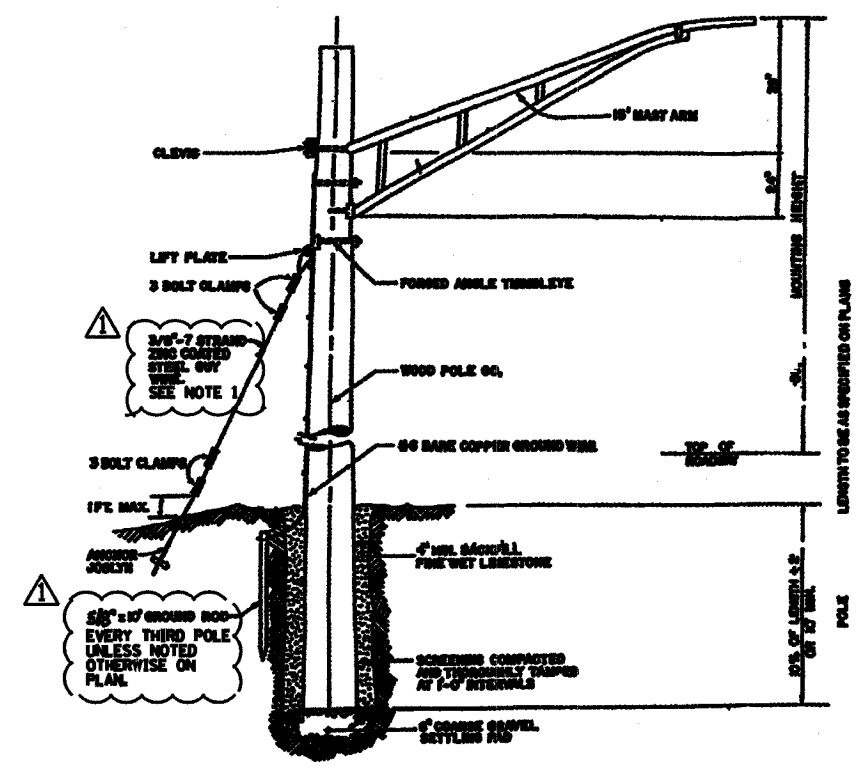
SCALE: 1" = 50'
 DATE: 3-09-05
 DRAWN BY: CLG
 CHECKED BY: GAG

228TLIGHTPLAN.DGN

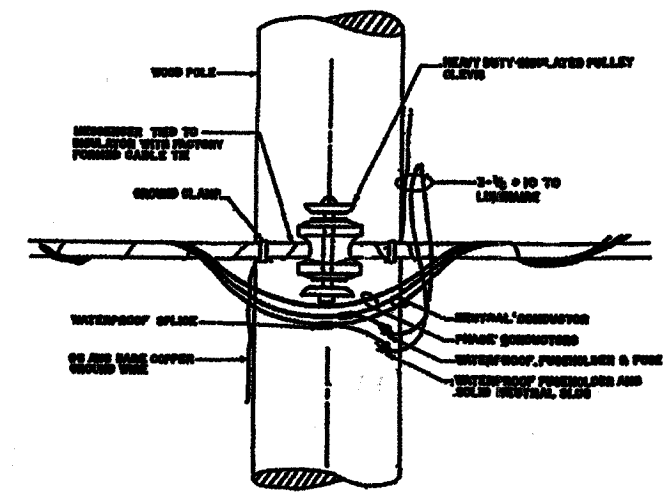
* Sheet 31 is deleted *

F.A.P. RTE.	SECTION	COUNTY	TOTAL SHEETS	SHEET NO.
066	21 (B&G) R	McHENRY	66	32
STA.		TO STA.		
FED. ROAD DIST. NO.	ILLINOIS	FED. AID PROJECT		

#62391

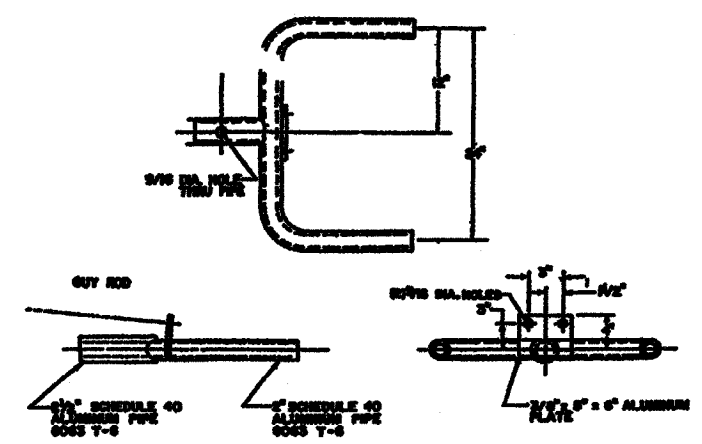


TEMPORARY LIGHT POLE DETAIL

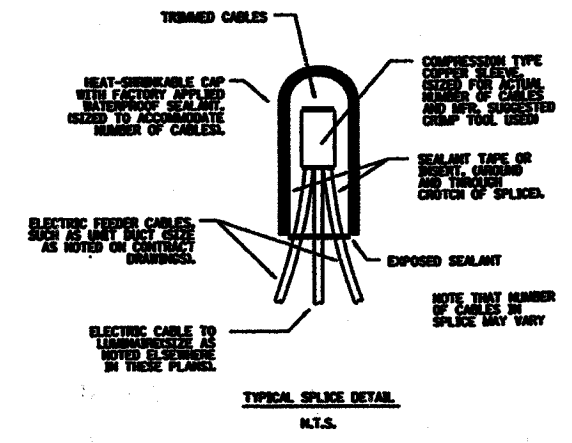


TEMPORARY LIGHT POLE GABLE ATTACHMENT DETAIL

NOTES:
1. GUY WIRES SHALL INCLUDE 6" YELLOW PLASTIC GUY GUARD WITH U.V. GUARD STABILIZERS.



DUPLEX BRACKET DETAIL



TYPICAL SPLICE DETAIL
N.T.S.

3287/TEMPLIGHTDTLS.DGN

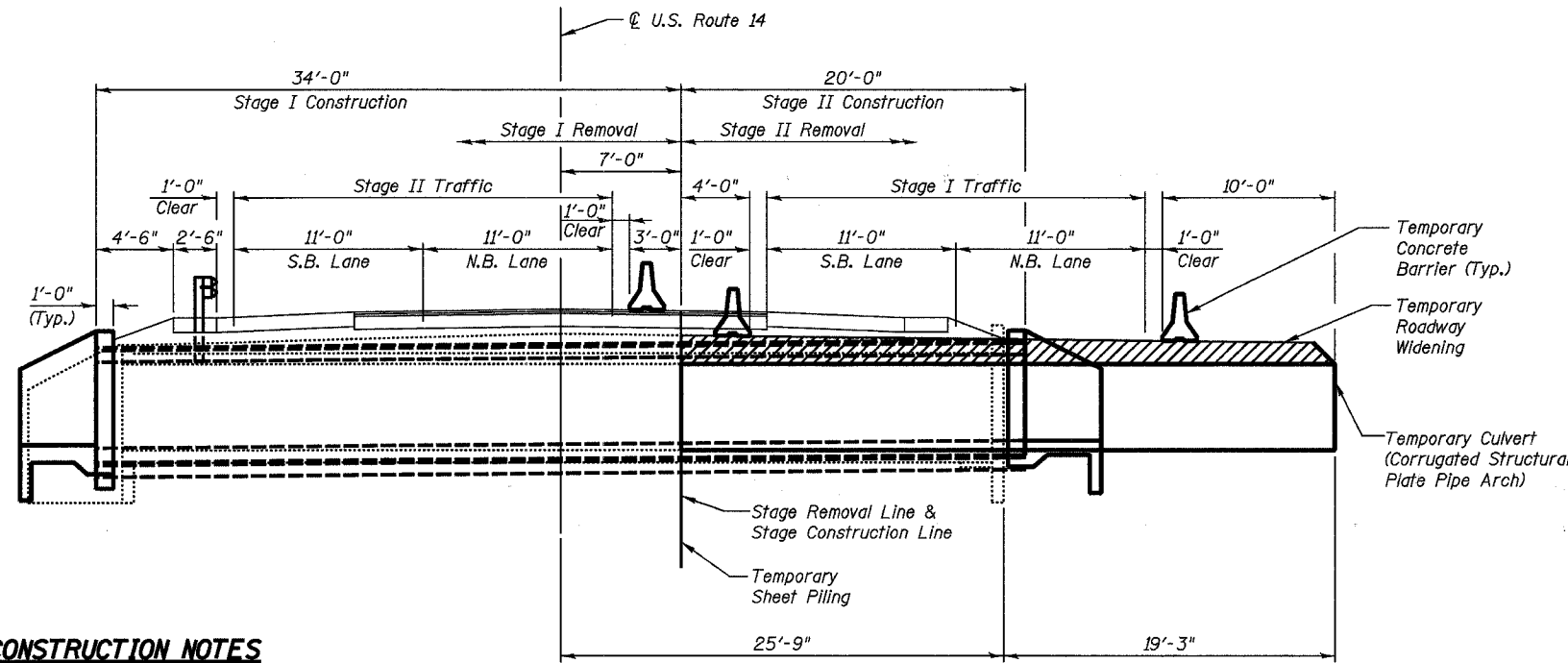
REVISIONS	
NAME	DATE
KWN	3-31-05

ILLINOIS DEPARTMENT OF TRANSPORTATION
U.S. ROUTE 14 OVER LAWRENCE CREEK
TEMPORARY LIGHTING DETAILS
SCALE: N.T.S. DRAWN BY: JPG
DATE: 2-28-05 CHECKED BY: GAG



STATE OF ILLINOIS
DEPARTMENT OF TRANSPORTATION

ROUTE NO.	SECTION	COUNTY	SHEETS	SHEET	SHEET NO. 2
F.A.P. 066	2(K&G)R	McHENRY	66	34	8 SHEETS
FED. ROAD DIST. NO. 7	BLINDS	FED. AID PROJECT			#62391



TOTAL BILL OF MATERIAL

ITEM	UNIT	TOTAL
Rock Excavation	C.Y.	50
Removal & Disposal of Unsuitable Material	C.Y.	100
Channel Excavation	C.Y.	465
Porous Granular Embankment	C.Y.	190
Gabions	C.Y.	50
Removal of Existing Structures, No. 1	Each	1
Structure Excavation	C.Y.	80
Temporary Sheet Piling	S.F.	880
Name Plates	Each	1
Box Culvert End Sections	Each	2
Precast Concrete Box Culvert 8' x 6'	L.F.	54
Precast Concrete Box Culvert 12' x 5'	L.F.	108
Corrugated Structural Plate Pipe Arches 51 Sq. Ft.	L.F.	38
Filter Fabric	S.Y.	74

STAGE CONSTRUCTION NOTES

Pre-Stage I Construction

1. Install temporary culvert at the existing northeast culvert barrel.
2. Place temporary pavement on the east side of roadway outside the existing pavement and over the temporary culvert.

Stage I Construction

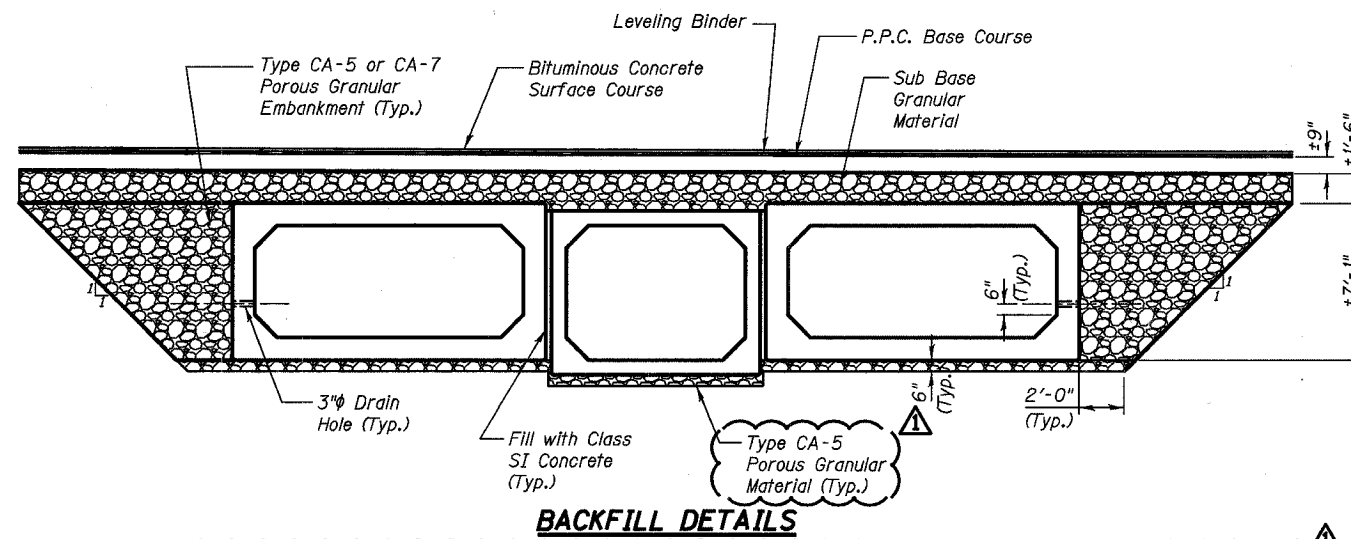
1. Establish Stage I Maintenance of Traffic.
2. Re-route traffic over temporary pavement.
3. Remove western portion of existing culvert.
4. Construct western portion of box culvert.

Stage II Construction

1. Establish Stage II Maintenance of Traffic.
2. Re-route traffic over Stage II Maintenance of Traffic Limits.
3. Remove eastern portion of existing culvert, temporary culvert, and temporary pavement.
4. Construct eastern portion of box culvert.
5. Remove Stage II Maintenance of Traffic.

STAGE CONSTRUCTION DETAILS

(Looking North)



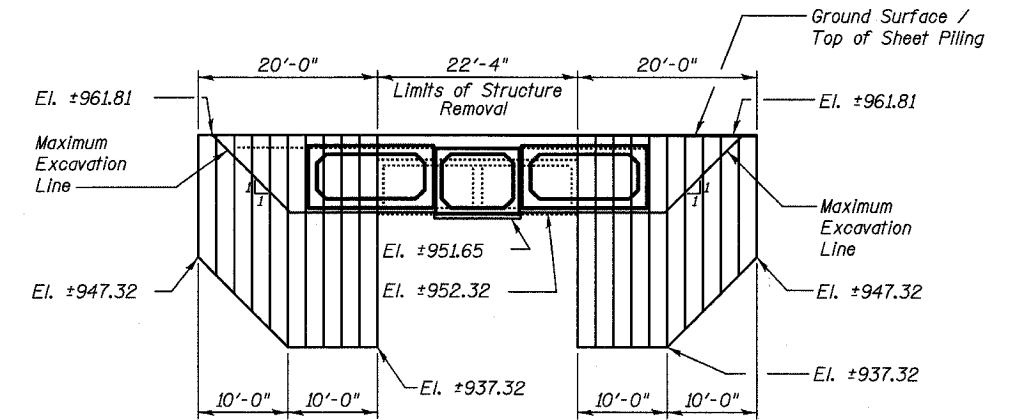
BACKFILL DETAILS

BACKFILL NOTES

1. Place type CA-5 porous granular material underneath the box culverts to the limits shown on the plans or as directed by the Engineer. Porous granular material shall be included in the cost for Precast Concrete Box Culverts. See Section 540 of the Standard Specifications.
2. Place type CA-5 or CA-7 porous granular embankment above the type CA-5 porous granular material to the bottom of the sub base granular material, as shown on the plans or as directed by the Engineer. To be paid for as Porous Granular Embankment.

NOTE:

Box culvert foundations bearing upon suitable natural soils shall be designed for a maximum net allowable soil bearing capacity of 2000 pounds per square foot.



TEMPORARY SHEET PILING DETAILS

TEMPORARY SHEET PILING NOTES

1. Minimum Section Modulus of the Temporary Sheet Piling shall be 14.0 in³/ft.
2. If the Contractor chooses to alter the temporary cantilevered sheet piling design requirements shown on the plans, a design submittal including plan details and calculations will be required for review and acceptance by the Engineer.
3. Hard driving may be encountered during the sheet piling installation. The Contractor shall provide the appropriate driving equipment for the soil conditions indicated on the boring logs.

DESIGNED	RFS
CHECKED	LLP
DRAWN	JPG
CHECKED	RFS
REVISED	3-31-05 KWN

EXAMINED	20
PASSED	ENGINEER OF BRIDGE DESIGN
	ENGINEER OF BRIDGES AND STRUCTURES

CONSTRUCTION DETAILS
AND BILL OF MATERIALS
U.S. ROUTE 14
(NORTHWEST HIGHWAY)
OVER LAWRENCE CREEK
FAP 066 SECTION 2(K&G)R
McHENRY COUNTY
STATION 110+00.00
STRUCTURE NO. 056-0074

4-14-05

STAGE CONSTRUCTION NOTES

Pre-Stage I Construction

1. Place temporary pavement on the east side of roadway outside the existing pavement.

Stage I Construction

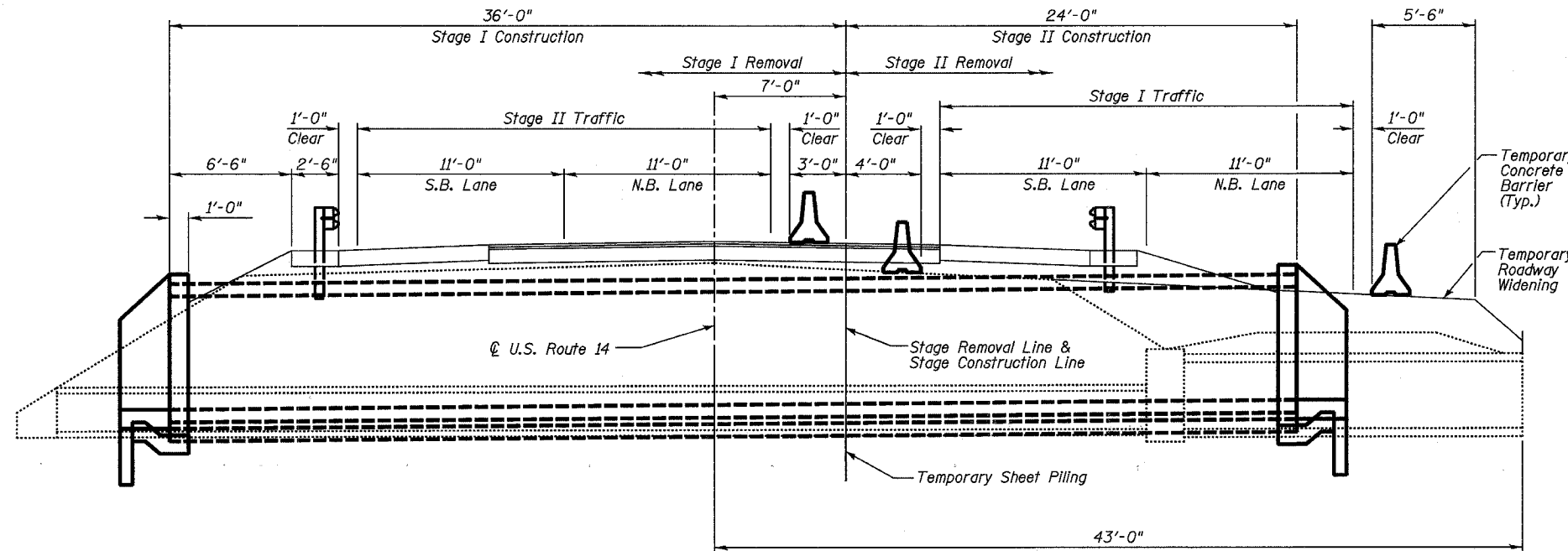
1. Establish Stage I Maintenance of Traffic.
2. Re-route traffic over temporary pavement.
3. Remove western portion of existing culvert.
4. Construct western portion of box culvert.

Stage II Construction

1. Establish Stage II Maintenance of Traffic.
2. Re-route traffic over Stage II Maintenance of Traffic limits.
3. Remove eastern portion of existing culvert and temporary pavement.
4. Construct eastern portion of box culvert.
5. Remove Stage II Maintenance of Traffic.

**STATE OF ILLINOIS
DEPARTMENT OF TRANSPORTATION**

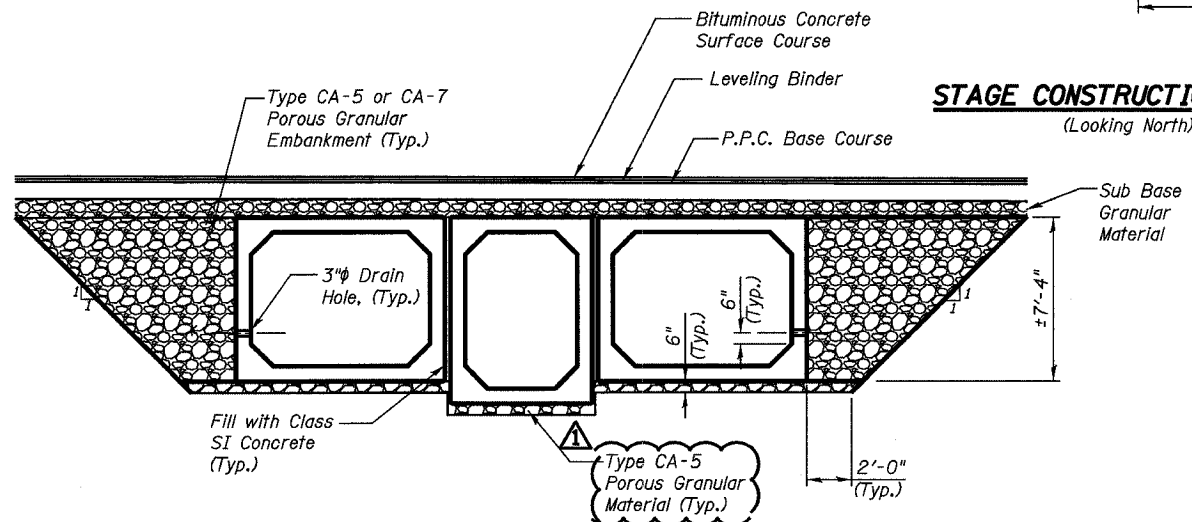
ROUTE NO.	SECTION	COUNTY	SHEETS	SHEET NO.
F.A.P. 066	21K&GJR	McHENRY	66	42
FED. ROAD DIST. NO. 7	ILLINOIS	FED. AID PROJECT		6 SHEETS



TOTAL BILL OF MATERIAL

ITEM	UNIT	TOTAL
Removal & Disposal of Unsuitable Material	C.Y.	60
Channel Excavation	C.Y.	780
Porous Granular Embankment	C.Y.	215
Removal of Existing Structures, No. 2	Each	1
Pipe Culvert Removal	L.F.	31
Structure Excavation	C.Y.	20
Temporary Sheet Piling	S.F.	1,125
Name Plates	Each	1
Box Culvert End Sections	Each	2
Precast Concrete Box Culvert 5' x 7'	L.F.	60
Precast Concrete Box Culvert 8' x 6'	L.F.	120

STAGE CONSTRUCTION DETAILS

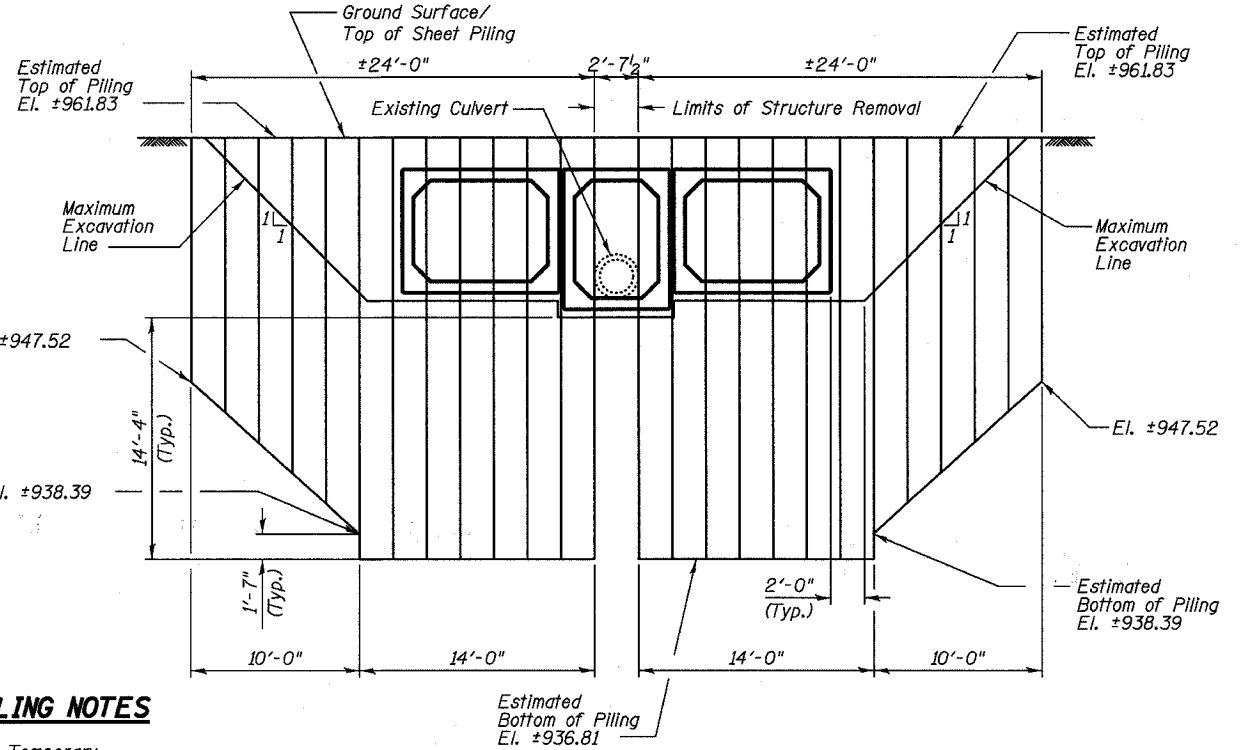


BACKFILL DETAILS

BACKFILL NOTES

1. Place type CA-5 porous granular material underneath the box culverts to the limits shown on the plans or as directed by the Engineer. Porous granular material shall be included in the cost for Precast Concrete Box Culverts. See Section 540 of the Standard Specifications.
2. Place type CA-5 or CA-7 porous granular embankment above the type CA-5 porous granular material to the bottom of the sub base granular material, as shown on the plans or as directed by the Engineer. To be paid for as Porous Granular Embankment.

NOTE:
Box culvert foundations bearing upon suitable natural soils shall be designed for a maximum net allowable soil bearing capacity of 2000 pounds per square foot.



TEMPORARY SHEET PILING NOTES

1. Minimum Section Modulus of the Temporary Sheet Piling shall be 19.5 in³/ft.
2. If the Contractor chooses to alter the temporary cantilevered sheet piling design requirements shown on the plans, a design submittal including plan details and calculations will be required for review and acceptance by the Engineer.
3. Hard driving may be encountered during the sheet piling installation. The Contractor shall provide the appropriate driving equipment for the soil conditions indicated on the boring logs.

TEMPORARY SHEET PILING DETAILS

**CONSTRUCTION DETAILS
AND BILL OF MATERIALS
U.S. ROUTE 14
(NORTHWEST HIGHWAY)
OVER TRIBUTARY 'A'
TO LAWRENCE CREEK
FAP 066 SECTION 21K&GJR
McHENRY COUNTY
STATION 107+00.00
STRUCTURE NO. 056-0075**

DESIGNED	RFS	20
CHECKED	LLP	ENGINEER OF BRIDGE DESIGN
DRAWN	JPG	PASSED
CHECKED	RFS	ENGINEER OF BRIDGES AND STRUCTURES
REVISED	3-31-05	KWN

3287-0056-0075.dgn

Rev. 4-14-05