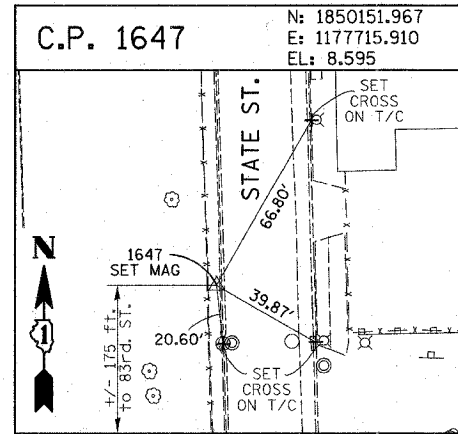
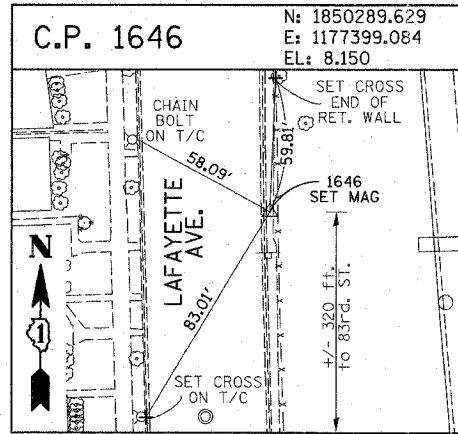
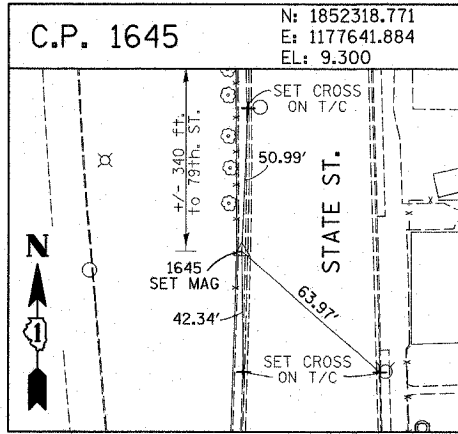
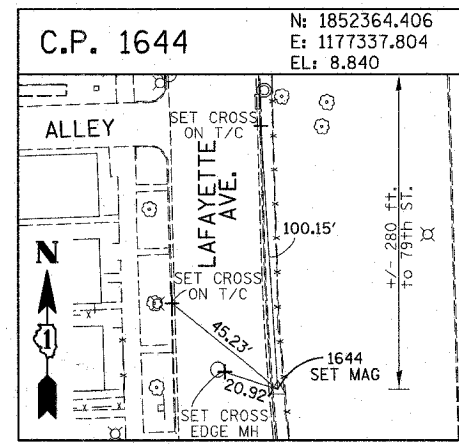
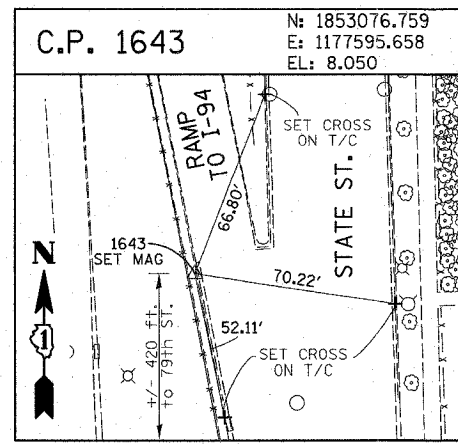
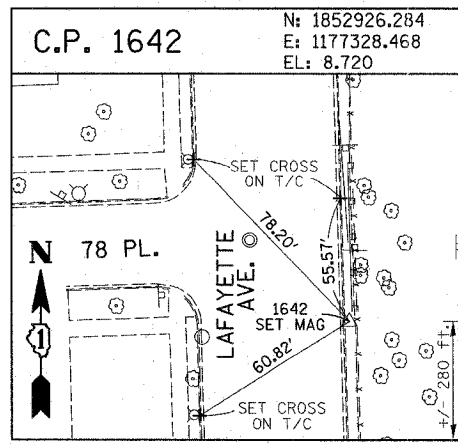
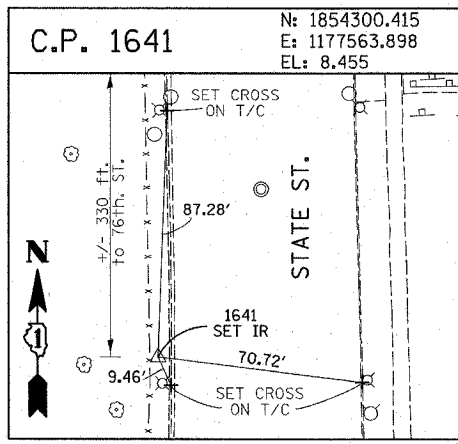
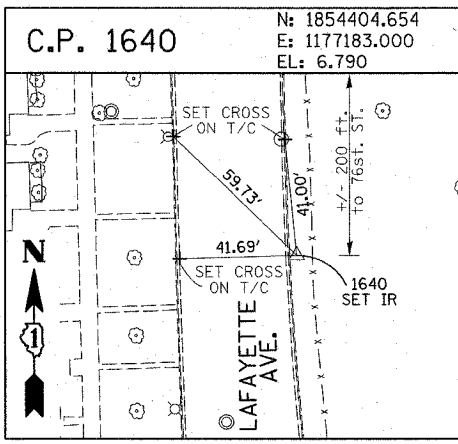
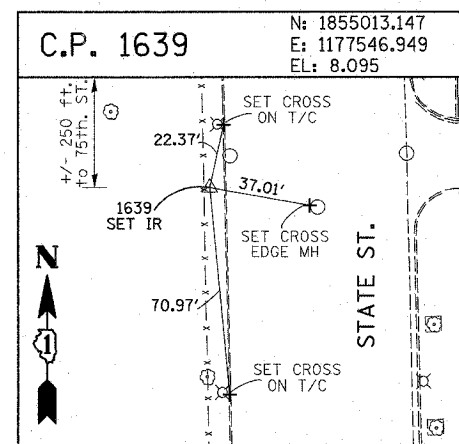
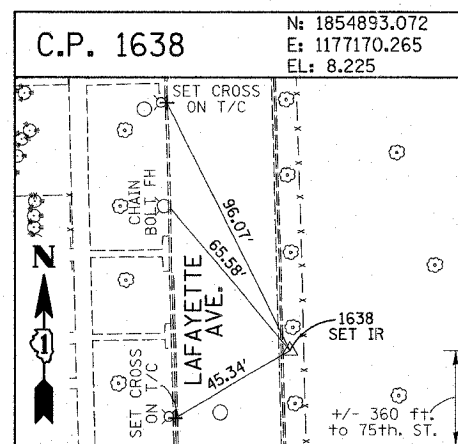
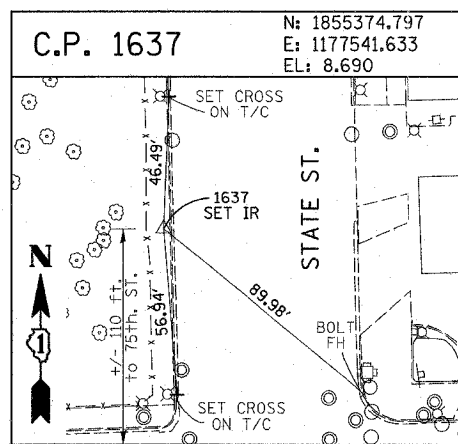
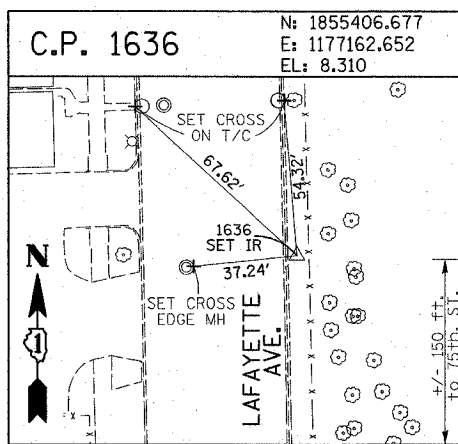
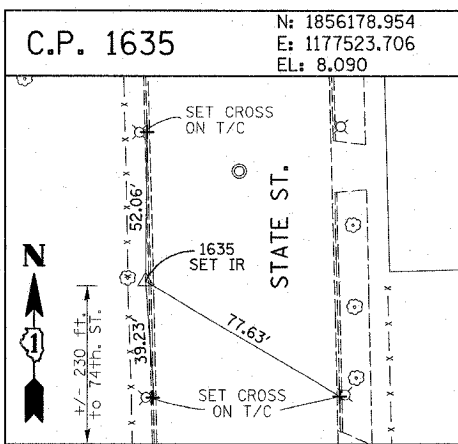
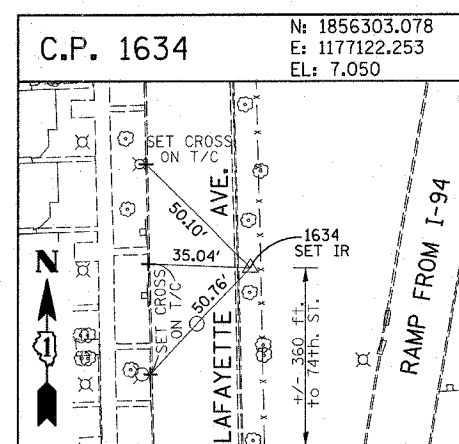
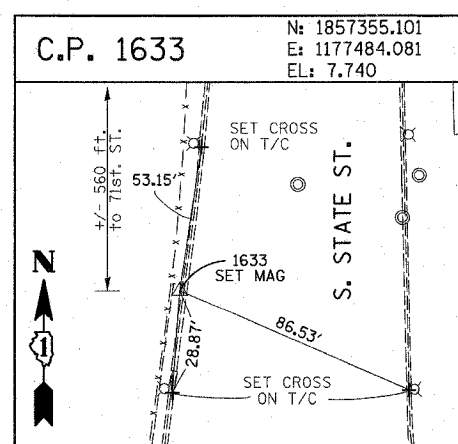
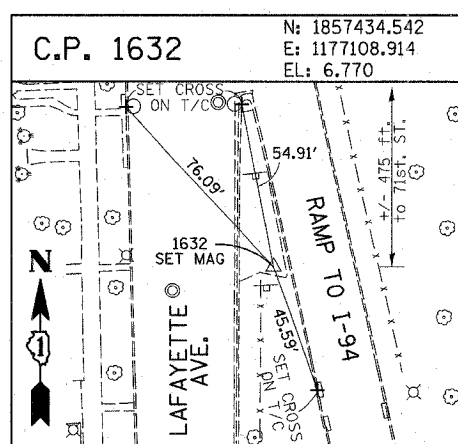
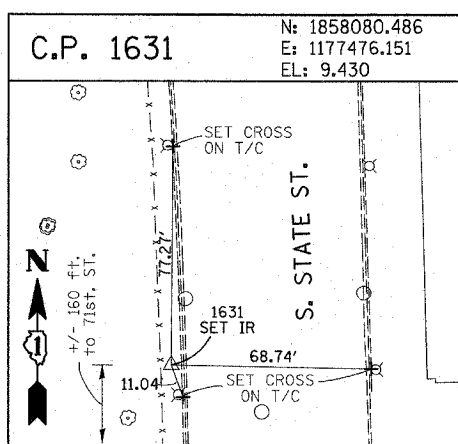
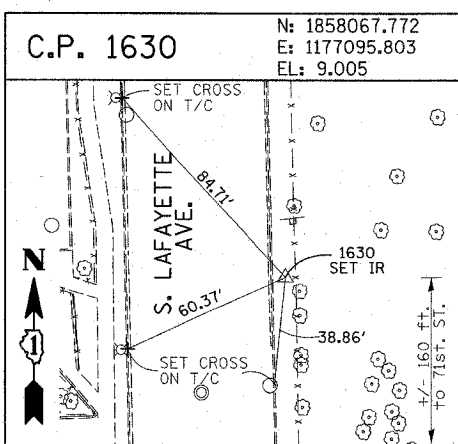


F.A.I. RTE.	SECTION	COUNTY	TOTAL SHEETS	SHEET NO.
90/94	2003-0311	COOK	976	16
STA.	TO STA.			
FED. ROAD DIST. NO.	ILLINOIS FED. AID PROJECT			
62583				



American Surveying Consultants, P.C.
 1175 N. North Street, Suite 200, Chicago, IL 60610
 (312) 467-0221

REVISIONS	
NAME	DATE

ILLINOIS DEPARTMENT OF TRANSPORTATION
 F.A.I. 90/94 (DAN RYAN EXPRESSWAY)
 31st STREET TO I-57
 SURVEY TIES FOR CONTROL POINTS
 SHEET 2 OF 4
 SCALE: 1"=30'
 DATE: OCTOBER 29, 2004
 DRAWN BY: GSP
 CHECKED BY: MMW

01/15/2004 01:54:00 PM