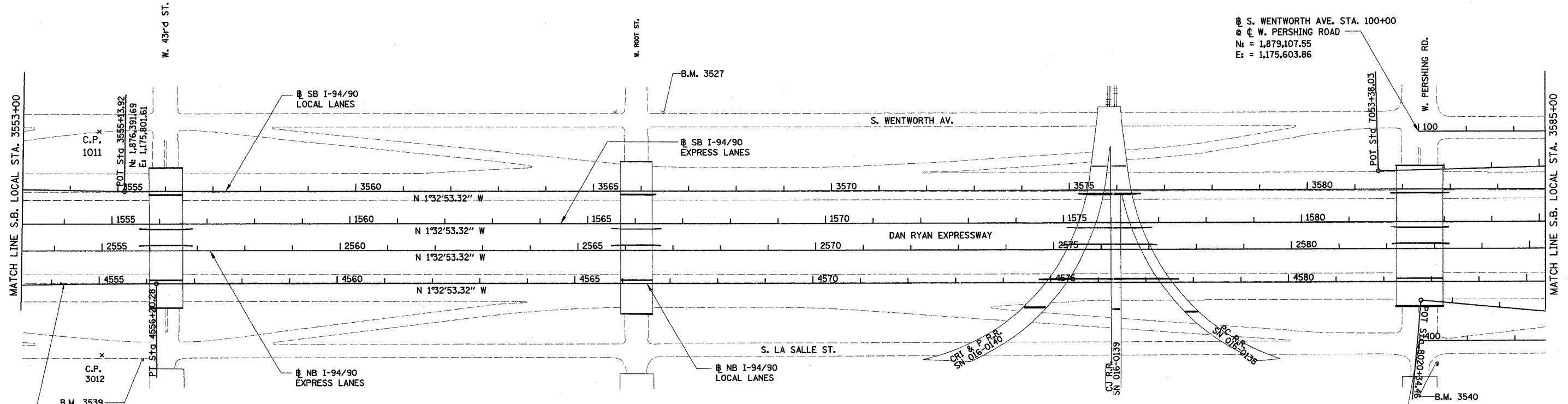
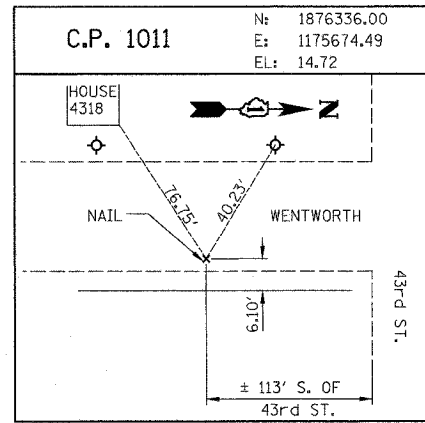
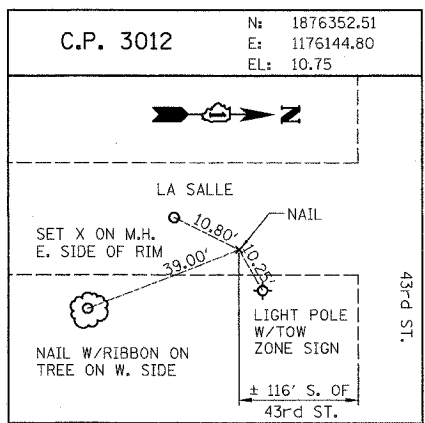


|                     |           |                           |        |              |           |
|---------------------|-----------|---------------------------|--------|--------------|-----------|
| 62583               | F.A. RTE. | SECTION                   | COUNTY | TOTAL SHEETS | SHEET NO. |
| 90/94               | 2003-0311 | COOK                      | 976    | 31           |           |
| STA. 3553+00.00     |           | TO STA. 3585+00.00        |        |              |           |
| FED. ROAD DIST. NO. |           | ILLINOIS FED. AID PROJECT |        |              |           |



**CURVE NBLOC22**  
 PROP. CURVE NBLOC22  
 PI STA. = 4554+19.42  
 N<sub>i</sub> = 1,876,262.66  
 E<sub>i</sub> = 1,175,997.17  
 Δ = 1° 32' 04" (RT)  
 D = 0° 22' 55"  
 R = 15,000.00'  
 T = 200.89'  
 L = 401.75'  
 E = 1.35'  
 P.C. STA = 4552+18.53  
 N<sub>i</sub> = 1,876,062.07  
 E<sub>i</sub> = 1,176,007.97  
 P.T. STA = 4556+20.28  
 N<sub>i</sub> = 1,876,463.47  
 E<sub>i</sub> = 1,175,991.74



Ⓜ S. WENTWORTH AVE. STA. 100+00  
 Ⓜ W. PERSHING ROAD  
 N<sub>i</sub> = 1,879,107.55  
 E<sub>i</sub> = 1,175,603.86

| REVISIONS |      |
|-----------|------|
| NAME      | DATE |
|           |      |
|           |      |
|           |      |
|           |      |
|           |      |
|           |      |
|           |      |
|           |      |
|           |      |
|           |      |

ILLINOIS DEPARTMENT OF TRANSPORTATION  
 F.A.I. 90/94 (DAN RYAN EXPRESSWAY)  
 31st STREET TO I-57  
 ROADWAY LIGHTING PLANS  
 ALIGNMENT AND TIES SHEET

SCALE: 1"=100'  
 DATE: OCTOBER 15, 2004  
 DRAWN BY: RA  
 CHECKED BY: JDC

BOWMAN, BARRETT & ASSOCIATES INC.  
 CONSULTING ENGINEERS  
 330 EAST RANDOLPH STREET SUITE 2450 CHICAGO, ILLINOIS 60601  
 JOB NO. ...