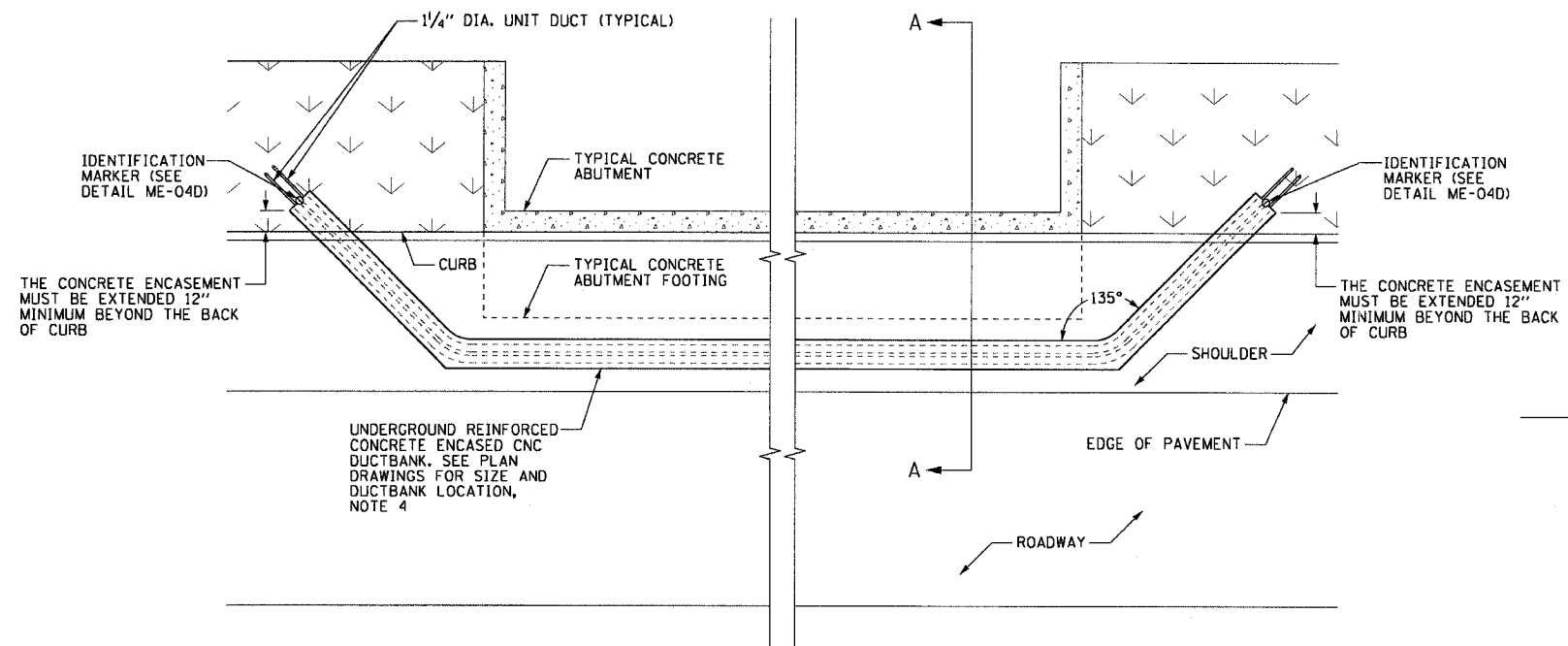


F.A.I. RTE.	SECTION	COUNTY	TOTAL SHEETS	SHEET NO.
90/94	2003-0311	COOK	976	46
STA.	TO STA.			
FED. ROAD DIST. NO. 1 ILLINOIS FED. AID PROJECT				

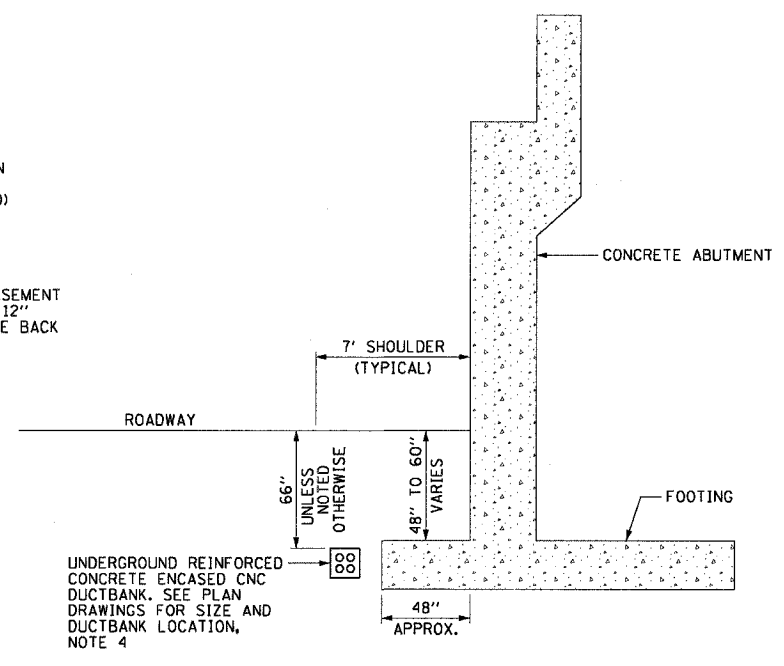
62583

NOTES:

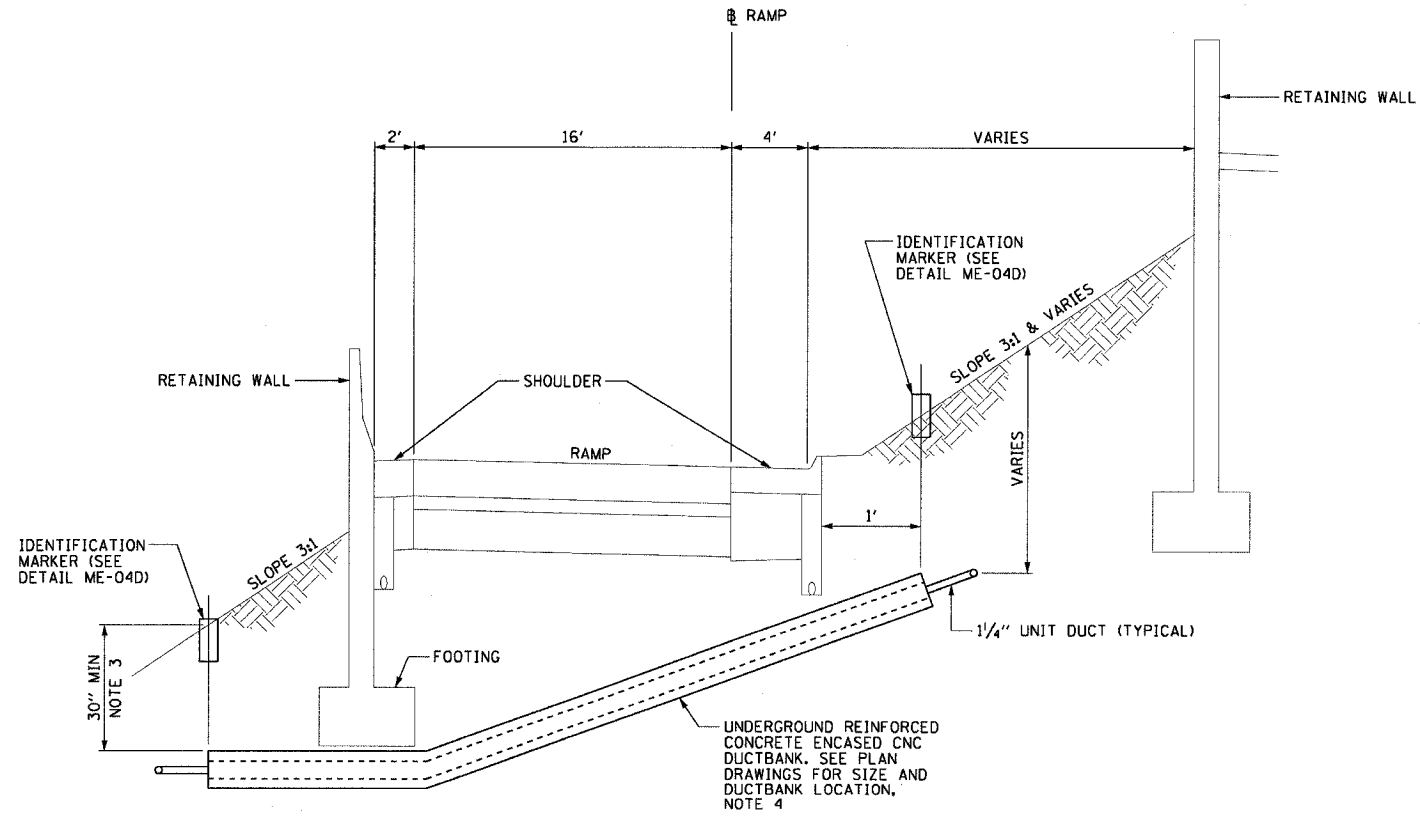
- SEE DRAWINGS ME-01 AND ME-02 FOR ELECTRICAL SYMBOLS AND ABBREVIATIONS.
- SEE PLAN DRAWINGS FOR THE PROPOSED CONDUIT ROUTING.
- DUCTBANK DEPTH MUST BE ADJUSTED SUCH THAT THE TOP OF CONCRETE ENCASEMENT IS INSTALLED UNDER THE RETAINING WALL FOOTING. THE DUCTBANK DEPTH MUST BE 30 INCHES MINIMUM.
- SEE DRAWING ME-11 FOR ELECTRICAL CONCRETE DUCTBANK DETAILS.
- SEE PLAN DRAWINGS FOR ANY DEVIATIONS IN DUCTBANK DEPTH.



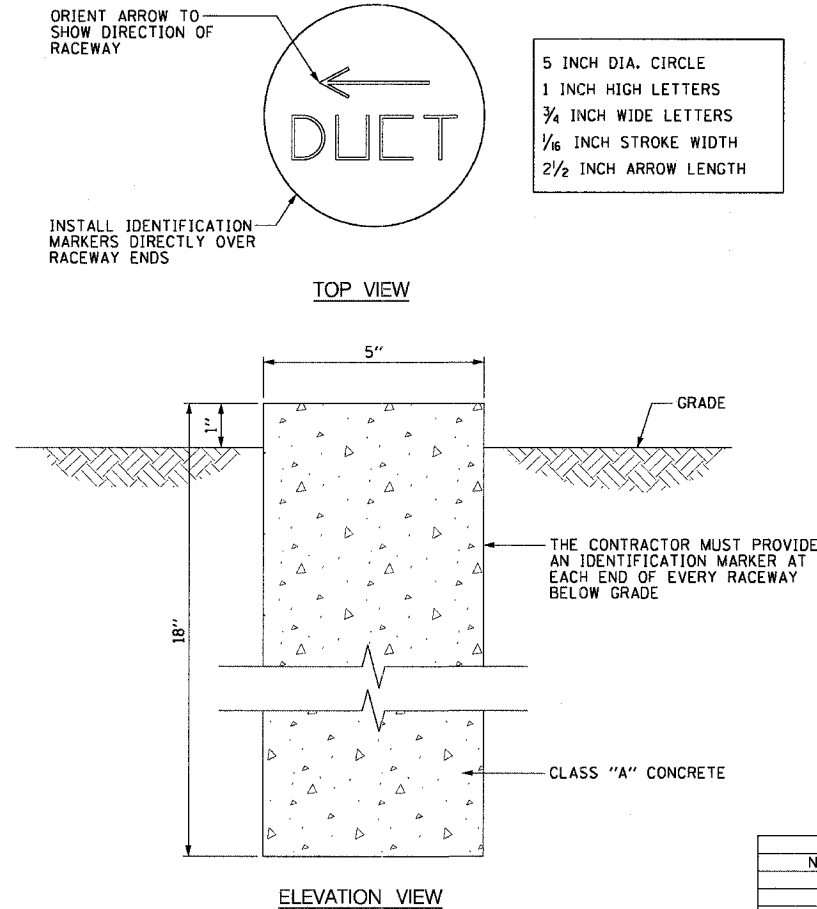
ME-04A DUCTBANK ROUTING AROUND ABUTMENT
SCALE: 1/4" = 1'-0"
DETAIL FOR REFERENCE ONLY, NOT INCLUDED IN THIS CONTRACT



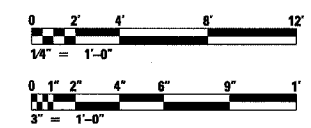
ME-04B DUCTBANK INSTALLATION DETAIL A-A
SCALE: 1/4" = 1'-0"
DETAIL FOR REFERENCE ONLY, NOT INCLUDED IN THIS CONTRACT



ME-04C TYPICAL CONCRETE ENCASED CNC UNDER RAMP INSTALLATION DETAIL
NOT TO SCALE



ME-04D IDENTIFICATION MARKER DETAIL
SCALE: 3" = 1'-0"



REVISIONS	
NAME	DATE

ILLINOIS DEPARTMENT OF TRANSPORTATION
F.A.I. 90/94 (DAN RYAN EXPRESSWAY)
31st STREET TO I-57

**DUCTBANK INSTALLATION DETAILS
UNDER RAMP AND AROUND
ABUTMENTS**

SCALE: AS SHOWN
DATE: October 29, 2004

DRAWN BY: CJM
CHECKED BY: WDS

11/19/2004 11:48:23 AM