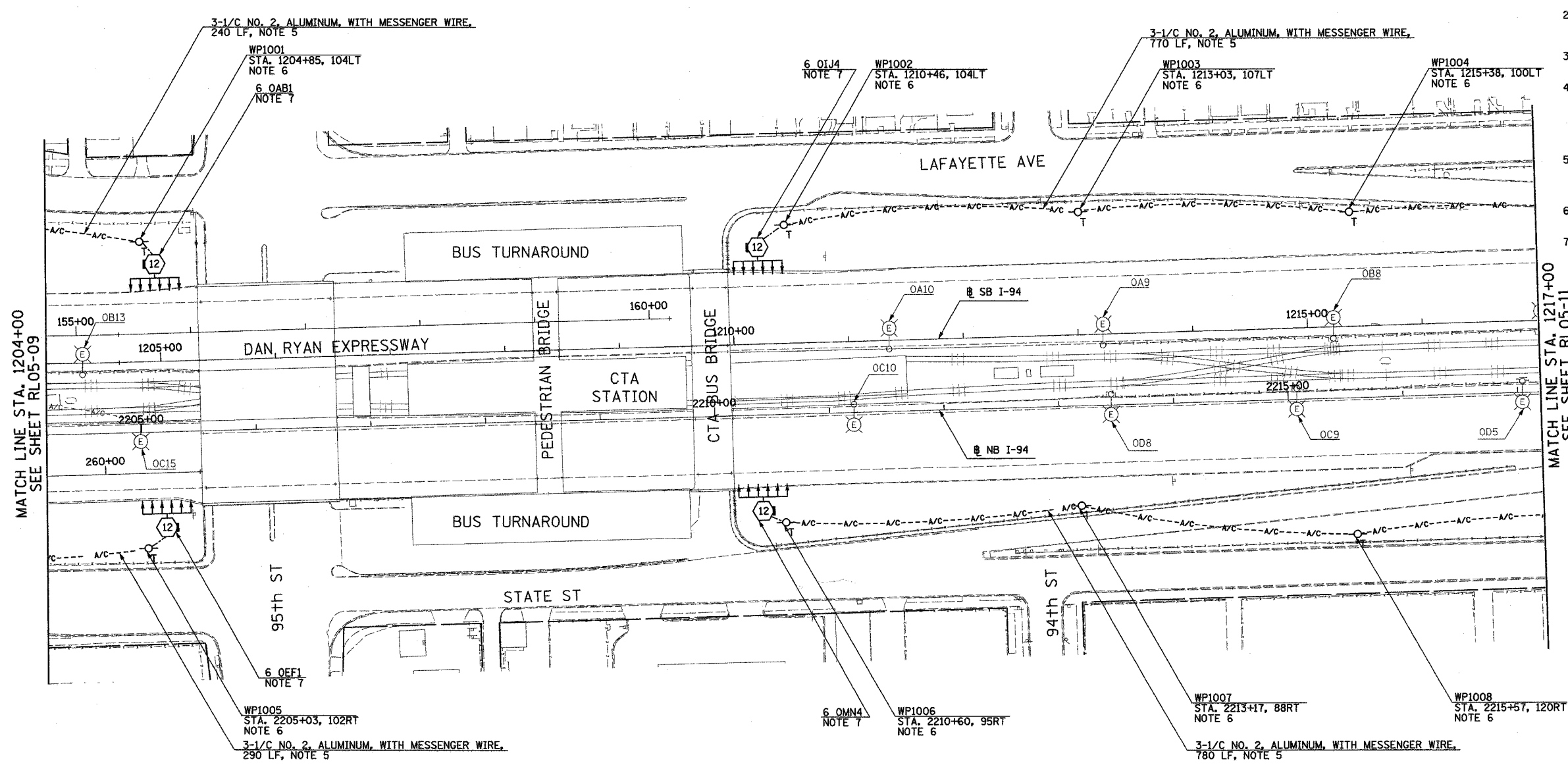
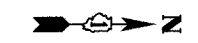


F.A.I. RTE.	SECTION	COUNTY	TOTAL SHEETS	SHEET NO.
90/94	2003-0311	COOK	976	130
STA. 1204+00		TO STA. 1217+00		
FED. ROAD DIST. NO.	ILLINOIS	FED. AID PROJECT		

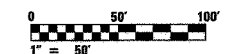
62583



MATCH LINE STA. 1204+00
SEE SHEET RL05-09

MATCH LINE STA. 1217+00
SEE SHEET RL05-11

- NOTES:**
- SEE DRAWINGS ME-01 AND ME-02 FOR ELECTRICAL SYMBOLS AND ABBREVIATIONS.
 - UNLESS NOTED OTHERWISE, ALL ITEMS AND WORK SHOWN IN HEAVY LINE WEIGHT ON THIS DRAWING ARE PROPOSED NEW ITEMS OF WORK.
 - SEE SHEET ES-01 AND ES-02 FOR HIGH MAST LIGHT TOWER SCHEDULE.
 - THE EXISTING ROADWAY LIGHTING SYSTEM SHALL REMAIN IN OPERATION UNTIL THE PROPOSED ROADWAY LIGHTING SYSTEM HAS BEEN INSTALLED, ENERGIZED, TESTED, AND ACCEPTED BY THE ENGINEER, UNLESS OTHERWISE DIRECTED BY THE ENGINEER.
 - AERIAL CABLE AND TEMPORARY WOOD POLES SHALL BE REMOVED AFTER HIGH MAST LIGHT TOWERS ARE PERMANENTLY WIRED AND ACCEPTED BY THE ENGINEER.
 - TEMPORARY WOOD POLES SHALL BE INSERTED IN GROUND TO ACCOMMODATE PROPOSED GRADING.
 - REFER SHEET ME-25 FOR TEMPORARY WIRING TO TOWER DETAIL.



RL05-10

REVISIONS	
NAME	DATE

ILLINOIS DEPARTMENT OF TRANSPORTATION
 F.A.I. 90/94 (DAN RYAN EXPRESSWAY)
 31st STREET TO I-57
 ROADWAY LIGHTING PLANS
 PROPOSED IMPROVEMENTS 2005
 SCALE: 1"=50'
 DATE: OCTOBER 29, 2004
 DRAWN BY: VRK
 CHECKED BY: TM

SINGH
 SINGH & ASSOCIATES, INC.
 CONSULTING ENGINEERS
 300 W. ADAMS ST.
 CHICAGO, IL 60606
 TEL: (312) 629-0240
 FAX: (312) 629-8449

10/21/2004 5:59:18 PM