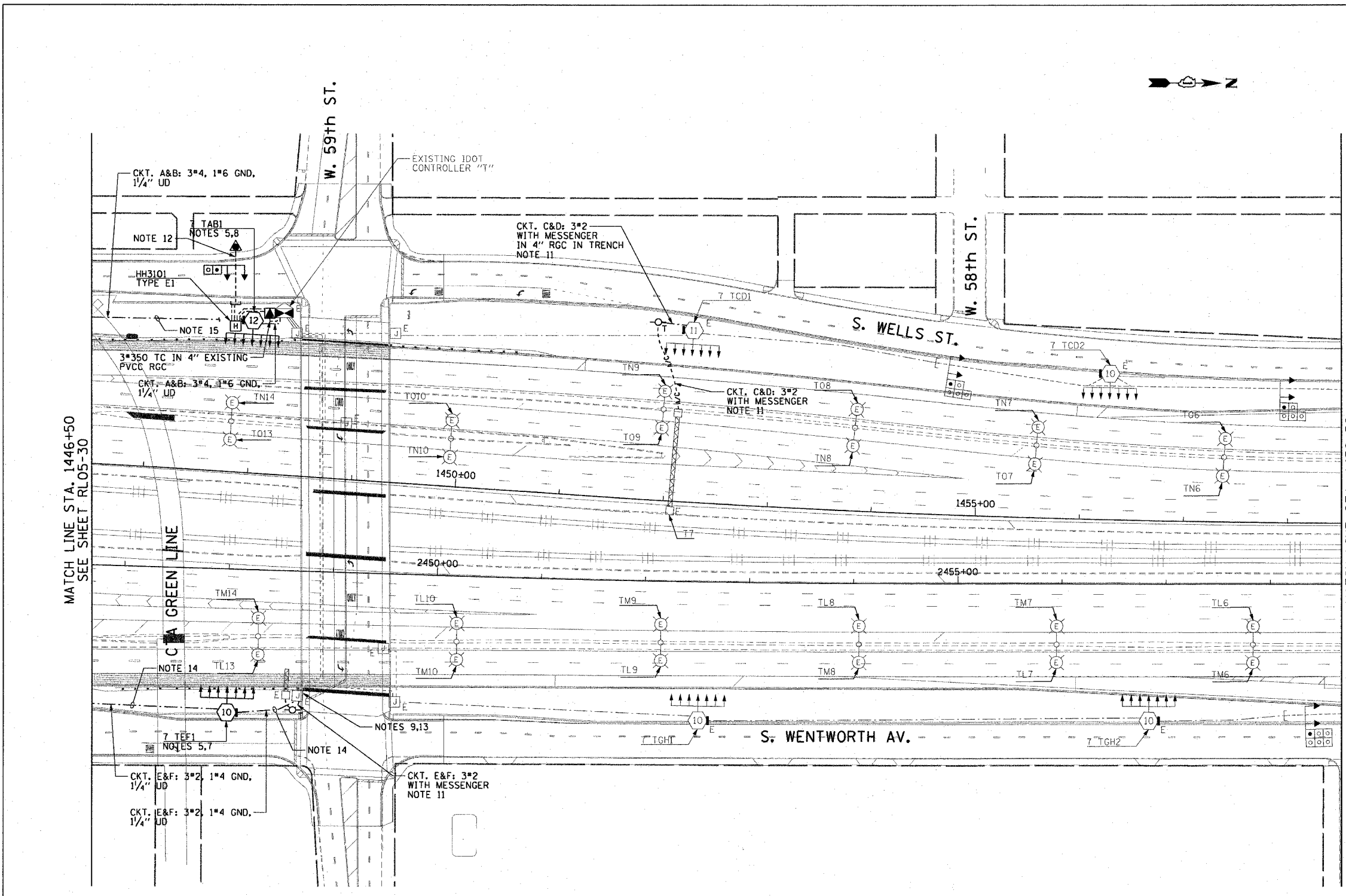


F.A.I. RTE.	SECTION	COUNTY	TOTAL SHEETS	SHEET NO.
90/94	2003-0311	COOK	976	146
STA. 1446+50.00		TO STA. 1458+50.00		
FED. ROAD DIST. NO. 1 ILLINOIS FED. AID PROJECT				

62583

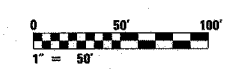
NOTES:

- SEE DRAWINGS ME-01 AND ME-02 FOR ELECTRICAL SYMBOLS AND ABBREVIATIONS.
- COORDINATE ALL WORK WITH IDOT CONTRACT NO. 62693.
- UNLESS NOTED OTHERWISE, ALL ITEMS AND WORK SHOWN IN HEAVY LINE WEIGHT ON THIS DRAWING ARE PROPOSED ITEMS AND WORK.
- SEE DRAWING ES-05 FOR HIGH MAST LIGHT TOWER SCHEDULE.
- HIGH MAST TOWER FOUNDATION WILL BE INSTALLED BY OTHERS IN IDOT CONTRACT NO. 62693.
- ALL CONCRETE ENCASED DUCTBANKS SHOWN ON THIS DRAWING WILL BE INSTALLED BY OTHERS IN A SEPARATE CONTRACT AND WILL BE CONSIDERED AN EXISTING CONDITION FOR THIS CONTRACT.
- THE CONDUIT FOR ALL RETAINING WALL MOUNTED HIGH MAST TOWERS MUST BE INSTALLED AS SHOWN ON DRAWING ME-03.
- THE CONDUIT FOR ALL GROUND MOUNTED HIGH MAST TOWERS MUST BE INSTALLED AS SHOWN ON DRAWING ME-13.
- SPLICE NEW LIGHTING CIRCUIT CABLES TO THE CORRESPONDING EXISTING LIGHTING CIRCUITS LOCATED WITHIN THE EXISTING JUNCTION BOX.
- RUN PARALLEL RACEWAYS IN COMMON TRENCH. THE FINAL INSTALLATION LOCATIONS OF THE LIGHTING RACEWAYS MUST BE COORDINATED WITH THE RACEWAYS SHOWN ON THE SURVEILLANCE PLANS.
- PROVIDE A TEMPORARY POWER FEED TO THE EXISTING SIGN TRUSS STRUCTURE LIGHTING UNITS. SEE DRAWING ME-25 FOR TEMPORARY POWER FEED TO SIGN STRUCTURE DETAILS.
- THE CONDUITS, DUCTBANK, HANDHOLE, AND TRANSFORMER PAD ASSOCIATED WITH THE UTILITY SERVICE FEED TO EXISTING IDOT LIGHTING CONTROLLER "T" WILL BE INSTALLED BY OTHERS IN IDOT CONTRACT NO. 62693. INSTALL THE WIRING, UTILITY TRANSFORMER, METER SOCKET, AND METER AS SHOWN ON DRAWING ME-15.
- CONTRACTOR MUST DRILL AN ACCESS HOLE ON THE BOTTOM OF THE EXISTING JUNCTION BOX FOR THE TEMPORARY AERIAL CABLES. PROVIDE A WEATHERTIGHT SEAL WHERE THE AERIAL CABLES ENTER THE JUNCTION BOX.
- ALL UNIT DUCT BETWEEN STA. 1446+50 AND THE EAST 59th ST. ABUTMENT MUST BE INSTALLED AT A MINIMUM TRENCH DEPTH OF 5'-0" TO AVOID CONFLICTS WITH FUTURE IDOT CONTRACT NO. 62301.
- ALL UNIT DUCT BETWEEN HIGH MAST LIGHT TOWERS 7 TAB2 AND 7 TAB1 MUST BE INSTALLED AT A MINIMUM TRENCH DEPTH OF 5'-0" TO AVOID CONFLICTS WITH FUTURE IDOT CONTRACT NO. 62303.

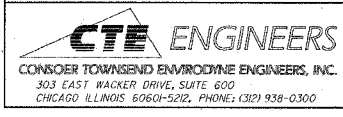


MATCH LINE STA. 1446+50
SEE SHEET RL05-30

MATCH LINE STA. 1458+50



RL05-31



REVISIONS	
NAME	DATE

ILLINOIS DEPARTMENT OF TRANSPORTATION
F.A.I. 90/94 (DAN RYAN EXPRESSWAY)
31st STREET TO I-57
**ROADWAY LIGHTING PLANS
PROPOSED IMPROVEMENTS 2005**

SCALE: 1"=50' DRAWN BY: CJM
DATE: October 29, 2004 CHECKED BY: WDS

m:\p\040686\elec\62693\rl05-31.dwg contract 2005\10203\2005-05-27