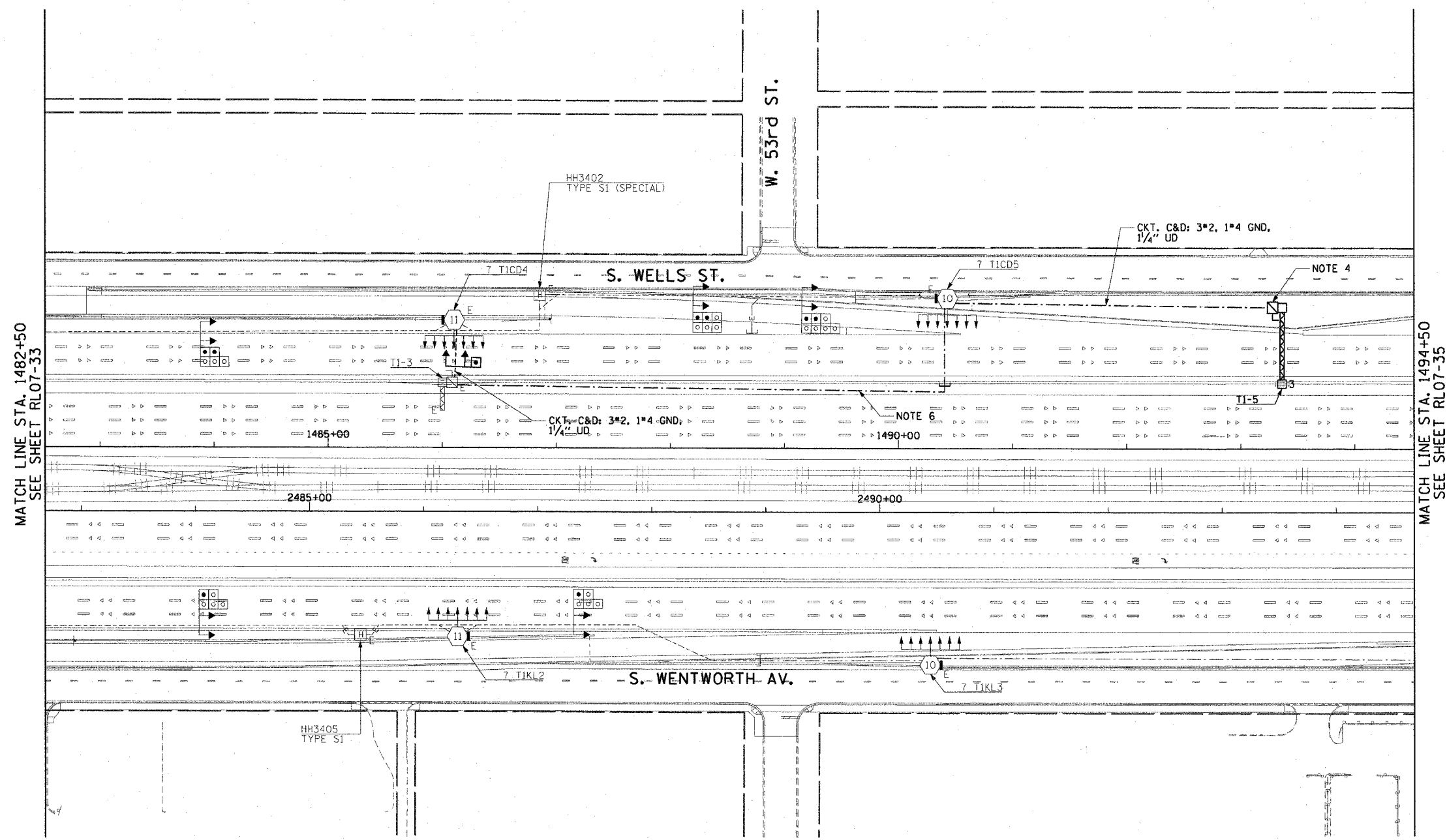


F.A.I. RT.:	SECTION	COUNTY	TOTAL SHEETS	SHEET NO.
90/94	2003-0311	COOK	976	242
STA. 1482+50.00		TO STA. 1494+50.00		
FED. ROAD DIST. NO. 1 ILLINOIS FED. AID PROJECT				

62583

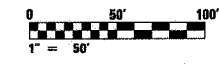
NOTES:

- SEE DRAWINGS ME-01 AND ME-02 FOR ELECTRICAL SYMBOLS AND ABBREVIATIONS.
- COORDINATE ALL WORK WITH IDOT CONTRACT NOS. 62301 AND 62303.
- UNLESS NOTED OTHERWISE, ALL ITEMS AND WORK SHOWN IN HEAVY LINE WEIGHT ON THIS DRAWING ARE PROPOSED ITEMS AND WORK.
- SEE IDOT STANDARD DRAWINGS FOR ELECTRIC CONNECTION TO SIGN STRUCTURE DETAILS.
- ALL CONCRETE ENCASED DUCTBANKS SHOWN ON THIS DRAWING WILL BE INSTALLED BY OTHERS IN A SEPARATE CONTRACT, AND WILL BE CONSIDERED AN EXISTING CONDITION FOR THIS CONTRACT.
- THE EXISTING TEMPORARY POWER FEED TO SIGN STRUCTURE "T1-3" MUST REMAIN IN SERVICE UNTIL THE PERMANENT SERVICE HAS BEEN INSTALLED, TESTED, AND ACCEPTED BY THE ENGINEER. THE CONTRACTOR SHALL PROTECT THE FEED FROM DAMAGE DURING THE EXCAVATION OF THE LOCAL LANE PAVEMENT. AFTER THE PERMANENT FEED HAS BEEN INSTALLED AND ACCEPTED, THE TEMPORARY FEED SHALL BE DISCONNECTED AND REMOVED. THE EXISTING CONDUIT SHALL BE ABANDONED IN PLACE. THIS WORK WILL BE INCLUDED FOR PAYMENT UNDER THE "DISCONNECT SIGN LIGHTING AND REMOVE WIRING TO NEAREST SPLICE" PAY ITEM.
- THE FINAL INSTALLATION LOCATIONS OF THE LIGHTING RACEWAYS MUST BE COORDINATED WITH THE RACEWAYS SHOWN ON THE SURVEILLANCE PLANS.



MATCH LINE STA. 1482+50
SEE SHEET RL07-33

MATCH LINE STA. 1494+50
SEE SHEET RL07-35



RL07-34

CTE ENGINEERS
 CONSOER TOWNSEND ENVIRONMENTAL ENGINEERS, INC.
 303 EAST WACKER DRIVE, SUITE 600
 CHICAGO, ILLINOIS 60601-5282, PHONE: (312) 938-0300

REVISIONS	
NAME	DATE

ILLINOIS DEPARTMENT OF TRANSPORTATION
 F.A.I. 90/94 (DAN RYAN EXPRESSWAY)
 31st STREET TO I-57

**ROADWAY LIGHTING PLANS
 PROPOSED IMPROVEMENTS 2007**

SCALE: 1"=50' DRAWN BY: CJM
 DATE: October 29, 2004 CHECKED BY: WDS

m:\p\04066\EE\ee\ng\c\tr\20\sl\sl\contract\2\2007\RL07-34A.dwg 10/18/2004 08:08:55 AM