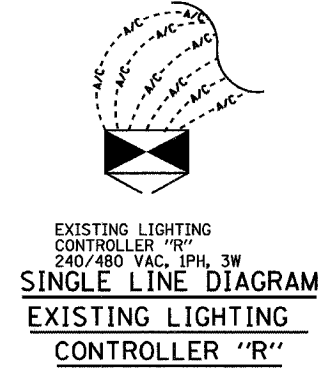


CIRCUIT	RED PHASE		BLACK PHASE	
	AMPS	WATTS	AMPS	WATTS
A			B	
C			D	
E			F	
G			H	
I			J	
K			L	
M			N	
O			P	
TOTAL			TOTAL	



- LEGEND**
- HIGH MAST LIGHT TOWER.
 - 400 W. HPS LUMINAIRE (BLACK PHASE- SOLID SYMBOL, RED PHASE-OPEN SYMBOL)
 - HIGH MAST TOWER DESIGNATION.
 - LIGHTED SIGN STRUCTURE WITH 170 W. FLUORESCENT LUMINAIRES, QUANTITY OF LUMINAIRES AS REQUIRED. (BLACK PHASE- SOLID SYMBOL, RED PHASE, OPEN SYMBOL)
 - 3 POLE SAFETY SWITCH
 - UNDERPASS LIGHTING UNIT, 70W HPS LUMINAIRE. (BLACK PHASE- SOLID SYMBOL, RED PHASE-OPEN SYMBOL)
 - EXISTING LIGHTING CONTROLLER
 - GROUND FIELD
 - ELECTRIC UTILITY SERVICE

NOTES:
1. SEE DRAWING ME-12 FOR WIRING DIAGRAM DETAILS.

NAME	DATE
REVISOR	01/21/05

ILLINOIS DEPARTMENT OF TRANSPORTATION
F.A.I. 90/94 (DAN RYAN EXPRESSWAY)
31st STREET TO I-57

**SINGLE LINE DIAGRAM
LIGHTING CONTROLLER "R"
PROPOSED IMPROVEMENTS 2005**

SCALE: NOT TO SCALE
DATE: OCTOBER 29, 2004
DRAWN BY: YJ
CHECKED BY: TM

SINGH
SINGH & ASSOCIATES, INC.
CONSULTING ENGINEERS

300 W. ADAMS ST.
CHICAGO, IL 60606
TEL: (312) 629-0240
FAX: (312) 629-8449

12/23/05 PM