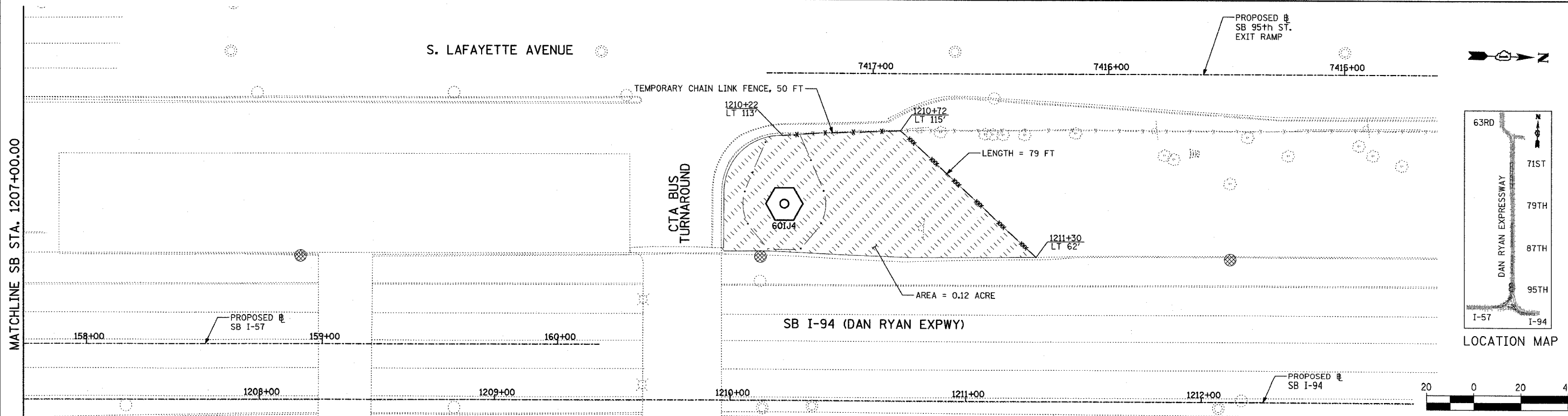
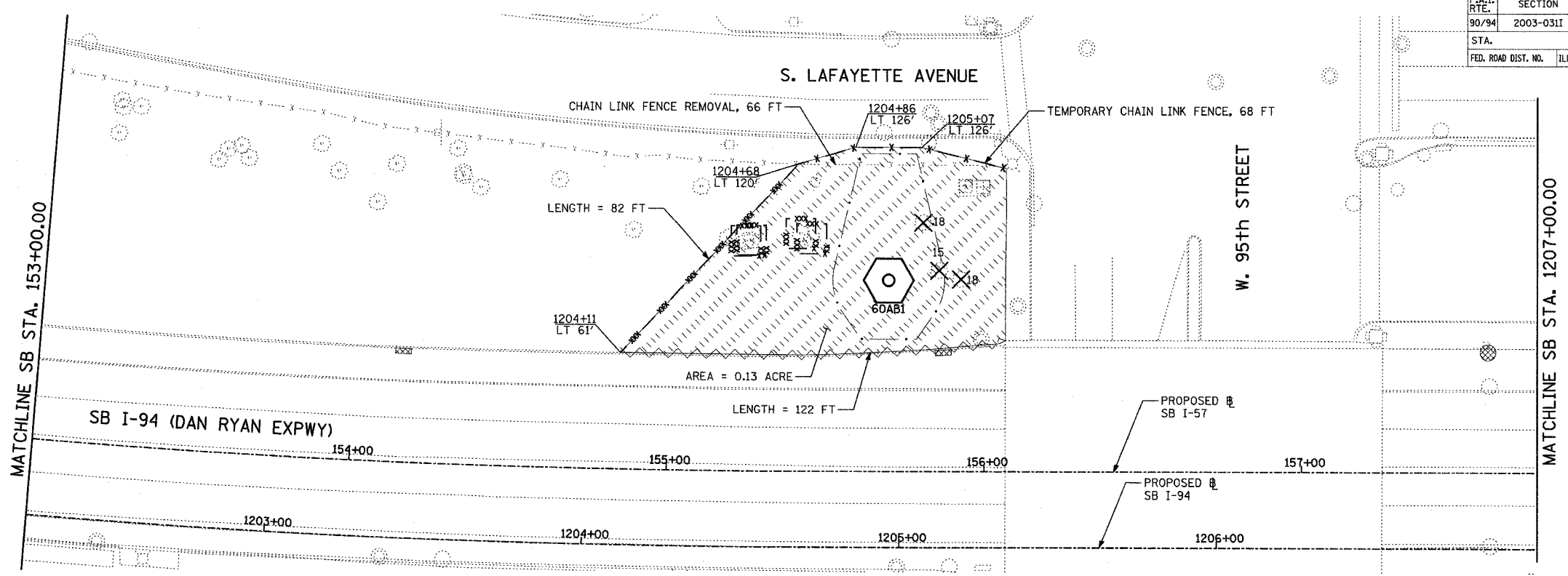


| | | | | |
|---------------------|-----------|---------------------------|--------------|-----------|
| F.A.I. RTE. | SECTION | COUNTY | TOTAL SHEETS | SHEET NO. |
| 90/94 | 2003-031I | COOK | 976 | 432 |
| STA. | | TO STA. | | |
| FED. ROAD DIST. NO. | | ILLINOIS FED. AID PROJECT | | |
| | | 62583 | | |



- LEGEND:**
- TEMPORARY EROSION CONTROL SEEDING
 - PERIMETER EROSION BARRIER
 - INLET FILTER, TO BE INSTALLED IN OFF PROJECT DRAINAGE STRUCTURES ACCEPTING STORMWATER RUNOFF
 - TEMPORARY FENCE (60' PER TREE)
 - LIMITS OF GRADING
 - TREE REMOVAL (UNIT) (NO UNIT SHOWN = <6)

| REVISIONS | |
|-----------|------|
| NAME | DATE |
| | |
| | |
| | |
| | |
| | |
| | |
| | |
| | |
| | |
| | |

ILLINOIS DEPARTMENT OF TRANSPORTATION
 F.A.I. 90/94 (DAN RYAN EXPRESSWAY)
 31st STREET TO I-57
 EROSION CONTROL PLAN
 SB I-94
 SB I-57 STA. 153+00 TO SB I-94 1213+00

SCALE: 1"=20'
 DATE: OCTOBER 29, 2004

DRAWN BY: RTM, JPA
 CHECKED BY: JPM, MAG

TYLIN INTERNATIONAL

10/22/2004 10:24:57 AM