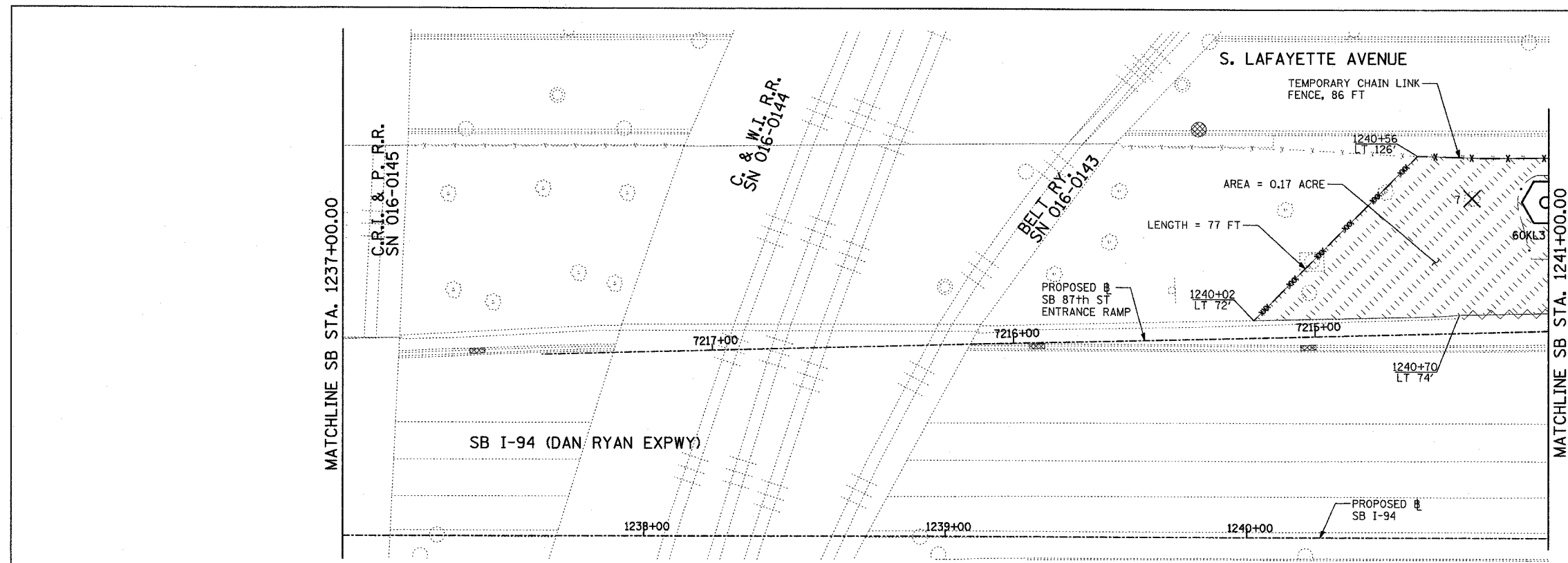
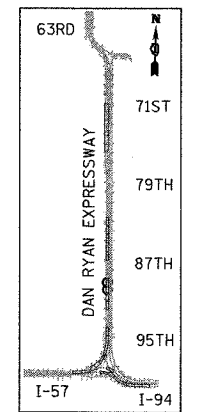
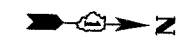
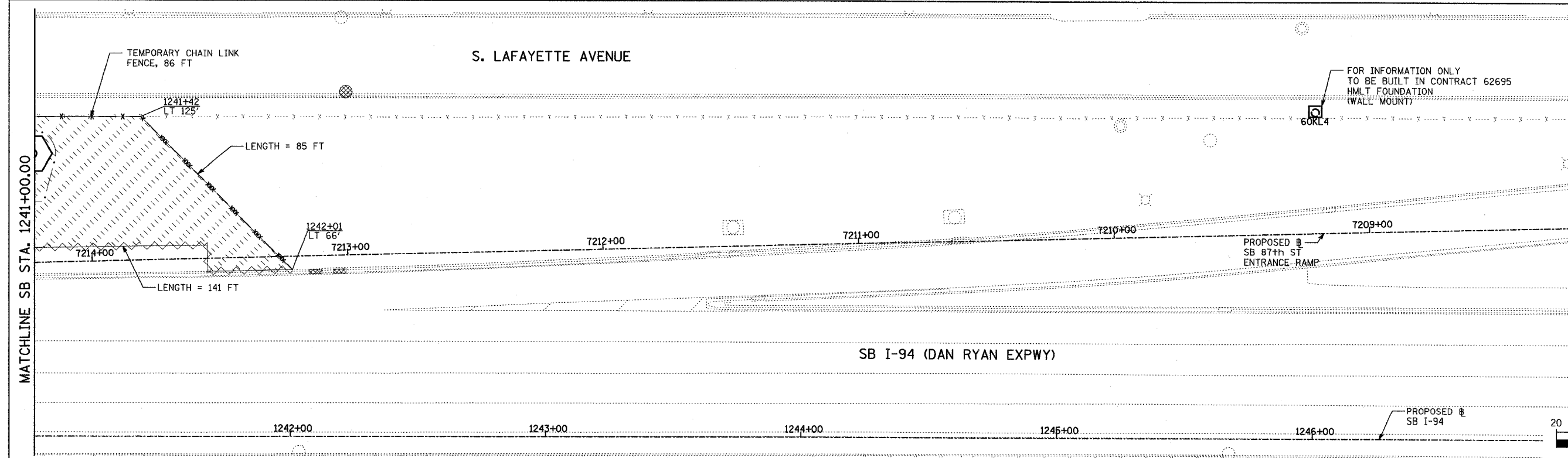


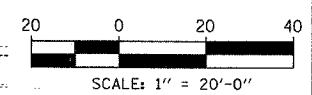
F.A.I. RTE.	SECTION	COUNTY	TOTAL SHEETS	SHEET NO.
90/94	2003-0311	COOK	476	434
STA.		TO STA.		
FED. ROAD DIST. NO.		ILLINOIS FED. AID PROJECT		
		62583		



- LEGEND:**
- TEMPORARY EROSION CONTROL SEEDING
  - PERIMETER EROSION BARRIER
  - INLET FILTER, TO BE INSTALLED IN OFF PROJECT DRAINAGE STRUCTURES ACCEPTING STORMWATER RUNOFF
  - TEMPORARY FENCE (60' PER TREE)
  - LIMITS OF GRADING
  - TREE REMOVAL (UNIT) (NO UNIT SHOWN = <6)



LOCATION MAP



REVISIONS	
NAME	DATE

ILLINOIS DEPARTMENT OF TRANSPORTATION  
 F.A.I. 90/94 (DAN RYAN EXPRESSWAY)  
 31st STREET to I-57  
 EROSION CONTROL PLAN  
 SB 87th STREET ENTRANCE RAMP  
 SB I-94 STA. 1237+00.00 TO 1247+00.00

SCALE: 1"=20'  
 DATE: OCTOBER 29, 2004  
 DRAWN BY: RTM, JPA  
 CHECKED BY: JPM, MAG

**TYLIN** INTERNATIONAL

10/22/2004 10:25:53 AM