

W
Wang Engineering, INC.
Consulting Geotechnical and Environmental Engineers
wangeng3@wangeng.com
1145 Main Street
Lombard, IL 60148
Telephone: 630 953-9928
Fax: 630 953-9938

BORING LOG 6RKL2

WEI Job No.: 414-07-01
Datum: CGD
Elevation: 6.09 ft
North: 1856861.25 ft
East: 1177131.21 ft
Station: 7127+99
Offset: 46' RT

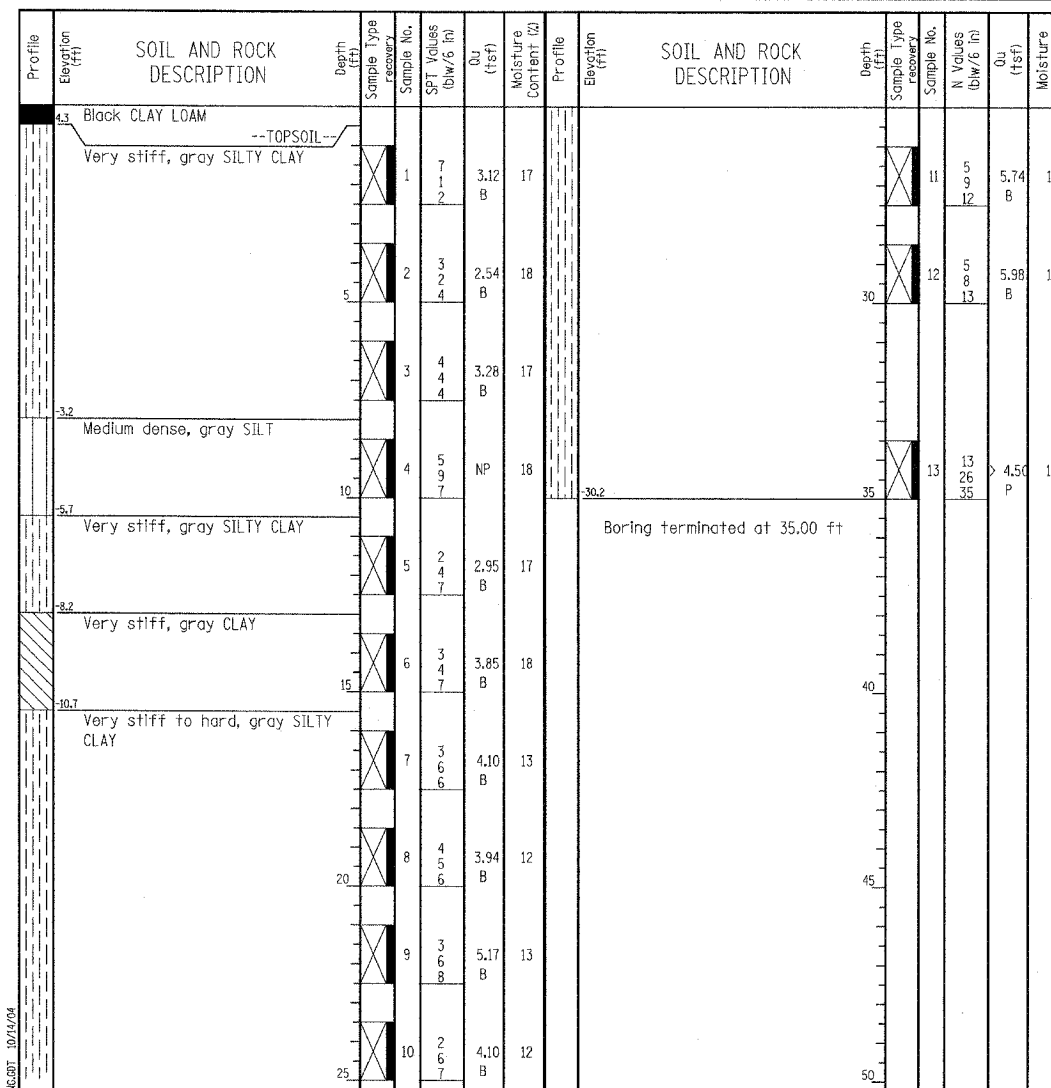
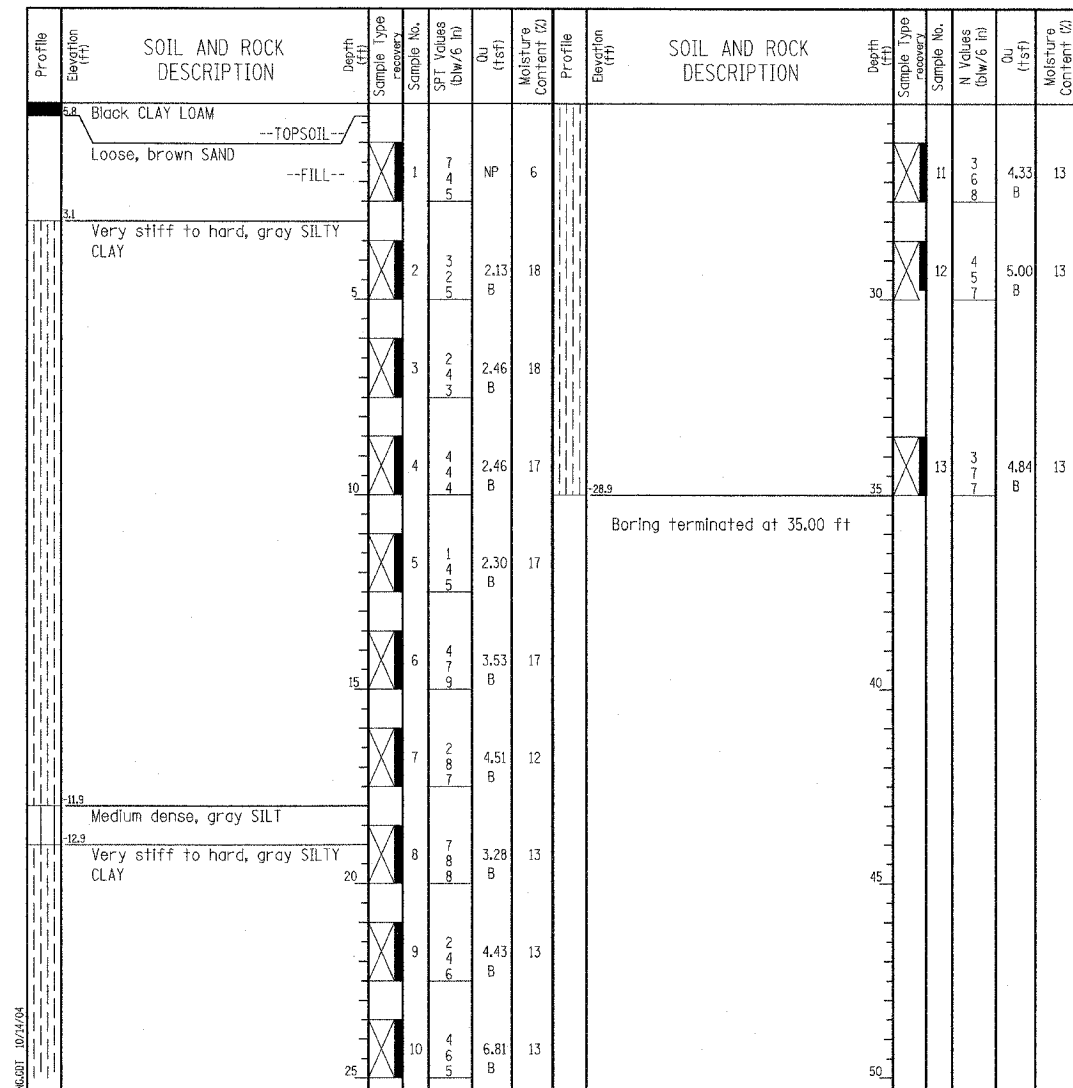
Client: T. Y. LIN International
Project: Dan Ryan Improvements; IDOT No. D-91-421-01
Location: From 95th Street to South of 69th Street

W
Wang Engineering, INC.
Consulting Geotechnical and Environmental Engineers
wangeng3@wangeng.com
1145 Main Street
Lombard, IL 60148
Telephone: 630 953-9928
Fax: 630 953-9938

BORING LOG 6RKL3

WEI Job No.: 414-07-01
Datum: CGD
Elevation: 4.76 ft
North: 1857292.63 ft
East: 1177119.99 ft
Station: 7123+65
Offset: 28' RT

Client: T. Y. LIN International
Project: Dan Ryan Improvements; IDOT No. D-91-421-01
Location: From 95th Street to South of 69th Street



GENERAL NOTES				WATER LEVEL DATA			
Begin Drilling	08-09-2004	Complete Drilling	08-09-2004	While Drilling	∇	DRY	
Drilling Contractor	Patrick Drilling	Drill Rig	CME 75 TMR	At Completion of Drilling	▼	DRY	
Driller	K&M	Logger	Y. Shiu	Checked by	L.I.		
Drilling Method	3.25" ID. HSA; Boring backfilled with bentonite upon completion			Time After Drilling	NA		
				Depth to Water	∇	NA	

The stratification lines represent the approximate boundary between soil types; the actual transition may be gradual.

GENERAL NOTES				WATER LEVEL DATA			
Begin Drilling	08-09-2004	Complete Drilling	08-09-2004	While Drilling	∇	DRY	
Drilling Contractor	Patrick Drilling	Drill Rig	CME 75 TMR	At Completion of Drilling	▼	DRY	
Driller	K&M	Logger	Y. Shiu	Checked by	L.I.		
Drilling Method	3.25" ID. HSA; Boring backfilled with bentonite upon completion			Time After Drilling	NA		
				Depth to Water	∇	NA	

The stratification lines represent the approximate boundary between soil types; the actual transition may be gradual.

TYLIN INTERNATIONAL

LEGEND
 NP NON-PLASTIC
 B BULGE FAILURE
 S SHEAR FAILURE
 P POCKET PENETROMETER

REVISIONS	
NAME	DATE

ILLINOIS DEPARTMENT OF TRANSPORTATION
 F.A.I. 90/94 (DAN RYAN EXPRESSWAY)
 31st STREET to I-57
BORING LOGS FOR HMLT'S
6 RKL2 & 6 RKL3
 S.M. DESIGNED BY: DJR
 SCALE: N.T.S. DRAWN BY: DJR
 DATE: OCTOBER 29, 2004 CHECKED BY: TD

10/15/2004 12:58:47 PM
 P:\02\31\006\2003-0311\203091