

F.A.I. RTE.	SECTION	COUNTY	TOTAL SHEETS	SHEET NO.
90/94	2003-0311	COOK	976	666
STA. 1596+50.00		TO STA. 1610+00.00		
FED. ROAD DIST. NO. 1 ILLINOIS FED. AID PROJECT				

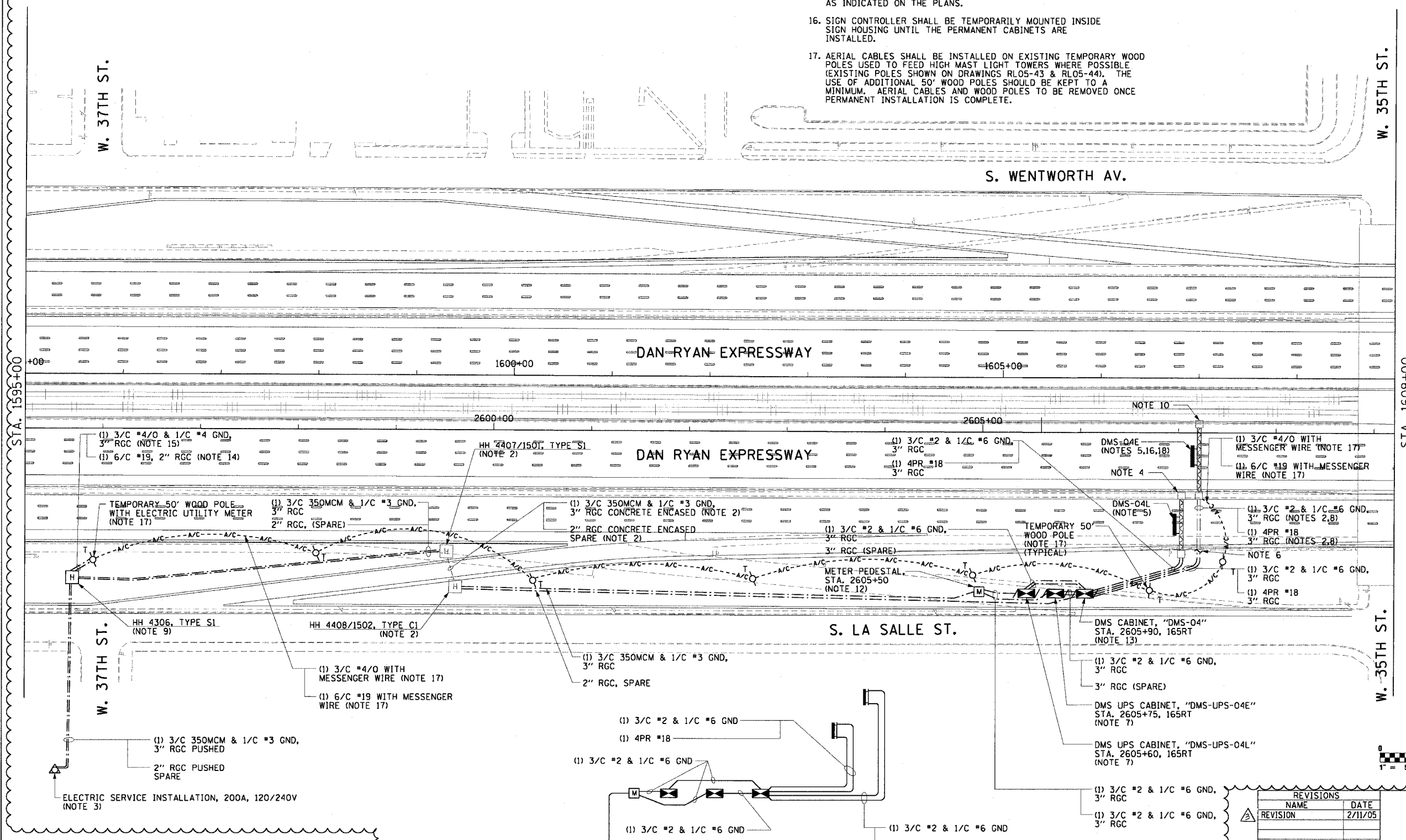
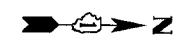
62583

**NOTES (CONTINUED):**

18. SIGN MAY BE OUT OF SERVICE FOR A MAXIMUM OF 48 HOURS TO FACILITATE CHANGE FROM TEMPORARY TO PERMANENT CONNECTIONS.

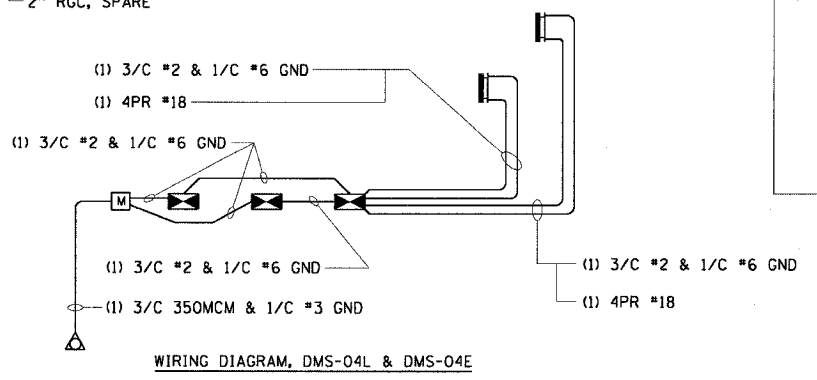
**NOTES (CONTINUED):**

- 15. POWER CABLES FOR TEMPORARY POWER FEED TO BE (1) 3/C #4/0 & 1/C #4 GND AND INSTALLED IN RACEWAY BETWEEN UTILITY POLE AND METER MOUNTED TO TEMPORARY WOOD POLE. ONCE PERMANENT CABINET INSTALLATION IS COMPLETED, CABLES ARE TO BE PULLED BACK TO UTILITY POLE AND REMOVED. PERMANENT CABLES ARE TO BE INSTALLED WITH SIZES AS INDICATED ON THE PLANS.
- 16. SIGN CONTROLLER SHALL BE TEMPORARILY MOUNTED INSIDE SIGN HOUSING UNTIL THE PERMANENT CABINETS ARE INSTALLED.
- 17. AERIAL CABLES SHALL BE INSTALLED ON EXISTING TEMPORARY WOOD POLES USED TO FEED HIGH MAST LIGHT TOWERS WHERE POSSIBLE (EXISTING POLES SHOWN ON DRAWINGS RLO5-43 & RLO5-44). THE USE OF ADDITIONAL 50' WOOD POLES SHOULD BE KEPT TO A MINIMUM. AERIAL CABLES AND WOOD POLES TO BE REMOVED ONCE PERMANENT INSTALLATION IS COMPLETE.



**NOTES:**

- 1. SEE DRAWINGS ME-01 AND ME-02 FOR ELECTRICAL SYMBOLS AND ABBREVIATIONS.
- 2. NOTED CONDUITS AND HANDHOLES ARE FURNISHED AND INSTALLED BY OTHERS UNDER A SEPARATE CONTRACT. ALL CABLES ARE TO BE FURNISHED AND INSTALLED UNDER THIS CONTRACT.
- 3. NEW ELECTRIC SERVICE TO BE INSTALLED ON EXISTING UTILITY POLE. CONDUIT UP THE POLE, WEATHERHEAD, AND COILED CABLE TO BE PROVIDED ACCORDING TO UTILITY COMPANY REQUIREMENTS.
- 4. SIGN TRUSS TO BE FURNISHED AND INSTALLED AT STATION NUMBER 2607+00 BY OTHERS IN CONTRACT NUMBER 62301.
- 5. SEE DRAWING DT-04 FOR SIGN INSTALLATION DETAILS.
- 6. CONTRACTOR MUST INTERCEPT CONDUIT STUBS AND MAKE CONNECTIONS TO THE NEW HANDHOLES INSTALLED UNDER THIS CONTRACT.
- 7. SEE DRAWING DT-06 FOR UPS EQUIPMENT DETAILS. SEE DRAWINGS DT-36 AND DT-47 FOR CABINET AND FOUNDATION DETAILS.
- 8. SEE DRAWING DT-01 FOR DUCT DETAILS IN MEDIAN WALL.
- 9. HANDHOLE AS SHOWN ON DRAWING DET-43.
- 10. SIGN TRUSS TO BE FURNISHED AND INSTALLED AT STATION NUMBER 2607+20 BY OTHERS IN CONTRACT NUMBER 62300.
- 11. COORDINATE INSTALLATION OF ALL ITEMS SHOWN ON THIS SHEET WITH CONTRACT NUMBERS 62300, 62301, AND 62584.
- 12. NEW METER PEDESTAL TO BE FURNISHED AT APPROXIMATE LOCATION SHOWN ON THIS DRAWING. METER PEDESTAL TO BE LOCATED ON EXPRESSWAY SIDE OF FENCE OR KNEE WALL AND POSITIONED SUCH THAT METER CAN BE READ FROM THE FRONTAGE ROAD. FINAL LOCATION TO BE APPROVED BY THE ENGINEER. SEE DRAWING DT-06A FOR METER PEDESTAL DETAILS.
- 13. SEE DRAWING COMM-44 FOR ADDITIONAL CONDUIT AND FIBER OPTIC CABLE CONNECTIONS TO THE CONTROLLER. SEE DRAWING DT-05 FOR CONTROLLER EQUIPMENT DETAILS. SEE DRAWINGS DT-36 AND DT-47 FOR CABINET AND FOUNDATION DETAILS.
- 14. TEMPORARY LEASED COMMUNICATION LINE CONNECTION TO BE INSTALLED FOR TEMPORARY COMMUNICATION BETWEEN THE SIGN AND IDOT TRAFFIC SYSTEMS CENTER. UTILIZE SPARE CONDUIT SYSTEM BETWEEN HH4308 AND UTILITY POLE TO INSTALL (1) 6/C #19 TELEPHONE CABLE FOR THIS TEMPORARY CONNECTION. CABLES TO BE REMOVED AFTER PERMANENT INSTALLATION IS COMPLETE.



WIRING DIAGRAM, DMS-04L & DMS-04E



REVISIONS		
REVISION	NAME	DATE
1		2/11/05

ILLINOIS DEPARTMENT OF TRANSPORTATION  
F.A.I. 90/94 (DAN RYAN EXPRESSWAY)  
31st STREET TO I-57

**DYNAMIC MESSAGE SIGN  
NB 35TH ST. SITE LAYOUT  
SIGNS DMS-04L & DMS-04E**

SCALE: 1"=50' DRAWN BY: HAR  
DATE: October 29, 2004 CHECKED BY: BMW

**CTE ENGINEERS**  
CONSOER TOWNSEND ENVIRONMENTAL ENGINEERS, INC.  
303 EAST WACKER DRIVE, SUITE 600  
CHICAGO ILLINOIS 60601-5202, PHONE: (312) 938-0300

02/10/2005 04:56:39 PM