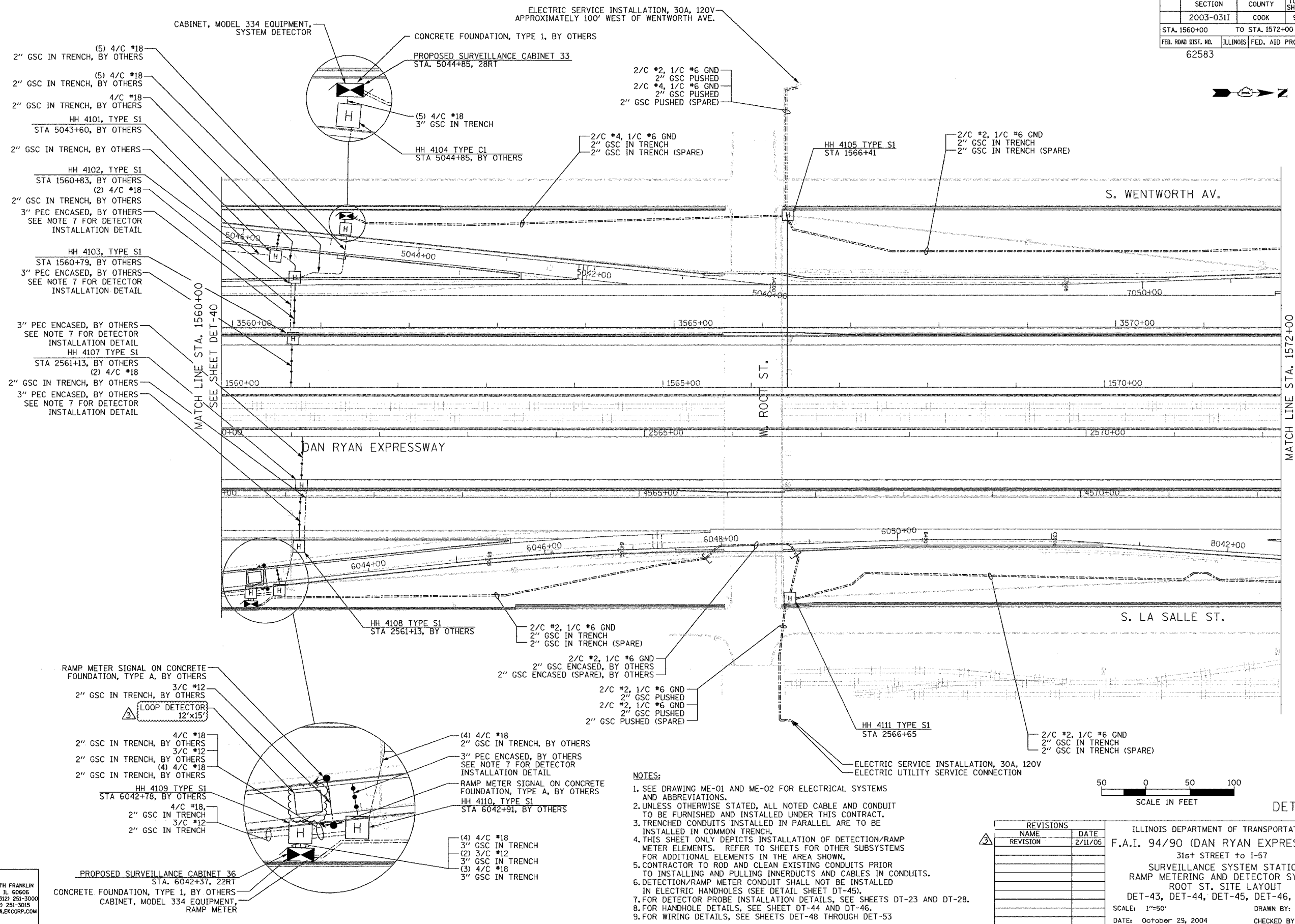


SECTION	COUNTY	TOTAL SHEETS	SHEET NO.
2003-0311	COOK	976	754
STA. 1560+00	TO STA. 1572+00		
FED. ROAD DIST. NO.	ILLINOIS FED. AID PROJECT		
62583			



- (5) 4/C #18
2" GSC IN TRENCH, BY OTHERS
- (5) 4/C #18
2" GSC IN TRENCH, BY OTHERS
- 4/C #18
2" GSC IN TRENCH, BY OTHERS
- HH 4101, TYPE S1
STA 5043+60, BY OTHERS
- 2" GSC IN TRENCH, BY OTHERS
- HH 4102, TYPE S1
STA 1560+83, BY OTHERS
- (2) 4/C #18
2" GSC IN TRENCH, BY OTHERS
- 3" PEC ENCASED, BY OTHERS
SEE NOTE 7 FOR DETECTOR
INSTALLATION DETAIL
- HH 4103, TYPE S1
STA 1560+79, BY OTHERS
- 3" PEC ENCASED, BY OTHERS
SEE NOTE 7 FOR DETECTOR
INSTALLATION DETAIL
- 3" PEC ENCASED, BY OTHERS
SEE NOTE 7 FOR DETECTOR
INSTALLATION DETAIL
- HH 4107 TYPE S1
STA 2561+13, BY OTHERS
- (2) 4/C #18
2" GSC IN TRENCH, BY OTHERS
- 3" PEC ENCASED, BY OTHERS
SEE NOTE 7 FOR DETECTOR
INSTALLATION DETAIL

- RAMP METER SIGNAL ON CONCRETE
FOUNDATION, TYPE A, BY OTHERS
- 3/C #12
2" GSC IN TRENCH, BY OTHERS
- LOOP DETECTOR
12'x15'
- 4/C #18
2" GSC IN TRENCH, BY OTHERS
- 3/C #12
2" GSC IN TRENCH, BY OTHERS
- (4) 4/C #18
2" GSC IN TRENCH, BY OTHERS
- HH 4109 TYPE S1
STA 6042+78, BY OTHERS
- 4/C #18,
2" GSC IN TRENCH
- 3/C #12
2" GSC IN TRENCH

PROPOSED SURVEILLANCE CABINET 36
STA. 6042+37, 22RT
CONCRETE FOUNDATION, TYPE 1, BY OTHERS
CABINET, MODEL 334 EQUIPMENT,
RAMP METER

- (4) 4/C #18
2" GSC IN TRENCH, BY OTHERS
- 3" PEC ENCASED, BY OTHERS
SEE NOTE 7 FOR DETECTOR
INSTALLATION DETAIL
- RAMP METER SIGNAL ON CONCRETE
FOUNDATION, TYPE A, BY OTHERS
- HH 4110, TYPE S1
STA 6042+91, BY OTHERS
- (4) 4/C #18
3" GSC IN TRENCH
- (2) 3/C #12
3" GSC IN TRENCH
- (3) 4/C #18
3" GSC IN TRENCH

- NOTES:
- SEE DRAWING ME-01 AND ME-02 FOR ELECTRICAL SYSTEMS AND ABBREVIATIONS.
 - UNLESS OTHERWISE STATED, ALL NOTED CABLE AND CONDUIT TO BE FURNISHED AND INSTALLED UNDER THIS CONTRACT.
 - TRENCHED CONDUITS INSTALLED IN PARALLEL ARE TO BE INSTALLED IN COMMON TRENCH.
 - THIS SHEET ONLY DEPICTS INSTALLATION OF DETECTION/RAMP METER ELEMENTS. REFER TO SHEETS FOR OTHER SUBSYSTEMS FOR ADDITIONAL ELEMENTS IN THE AREA SHOWN.
 - CONTRACTOR TO ROD AND CLEAN EXISTING CONDUITS PRIOR TO INSTALLING AND PULLING INNERDUCTS AND CABLES IN CONDUITS.
 - DETECTION/RAMP METER CONDUIT SHALL NOT BE INSTALLED IN ELECTRIC HANDHOLES (SEE DETAIL SHEET DT-45).
 - FOR DETECTOR PROBE INSTALLATION DETAILS, SEE SHEETS DT-23 AND DT-28.
 - FOR HANDHOLE DETAILS, SEE SHEET DT-44 AND DT-46.
 - FOR WIRING DETAILS, SEE SHEETS DET-48 THROUGH DET-53

REVISIONS		DATE
NAME	REVISION	DATE
		2/11/05

ILLINOIS DEPARTMENT OF TRANSPORTATION
F.A.I. 94/90 (DAN RYAN EXPRESSWAY)
31st STREET TO I-57
SURVEILLANCE SYSTEM STATION
RAMP METERING AND DETECTOR SYSTEM
ROOT ST. SITE LAYOUT
DET-43, DET-44, DET-45, DET-46, RM-18
SCALE: 1"=50'
DATE: October 29, 2004
DRAWN BY: CJH
CHECKED BY: MJL

Edwards AND Kelcey
ONE NORTH FRANKLIN
CHICAGO, IL 60606
PHONE: (312) 251-3000
FAX: (312) 251-3015
WEB: WWW.EKCORP.COM

P:\03009\03035\18\acad\66020\128.dwg