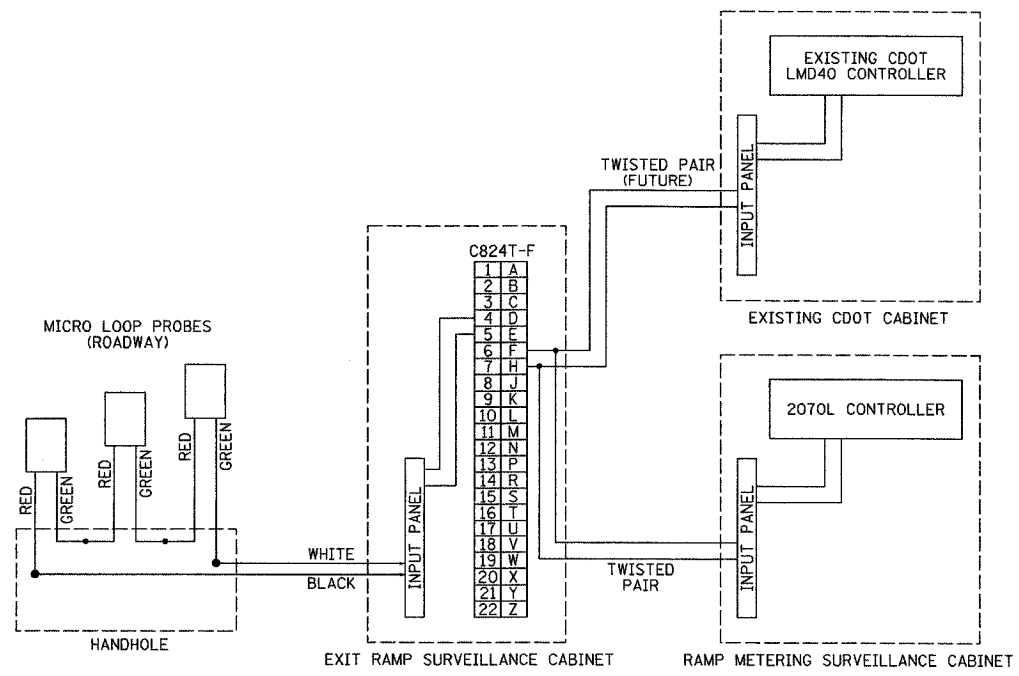
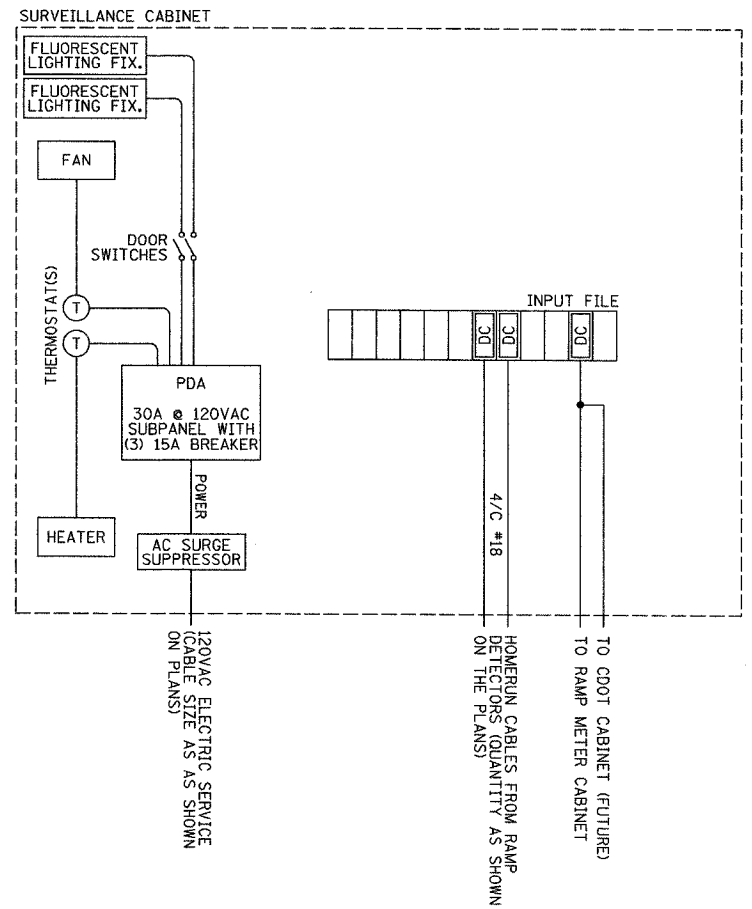


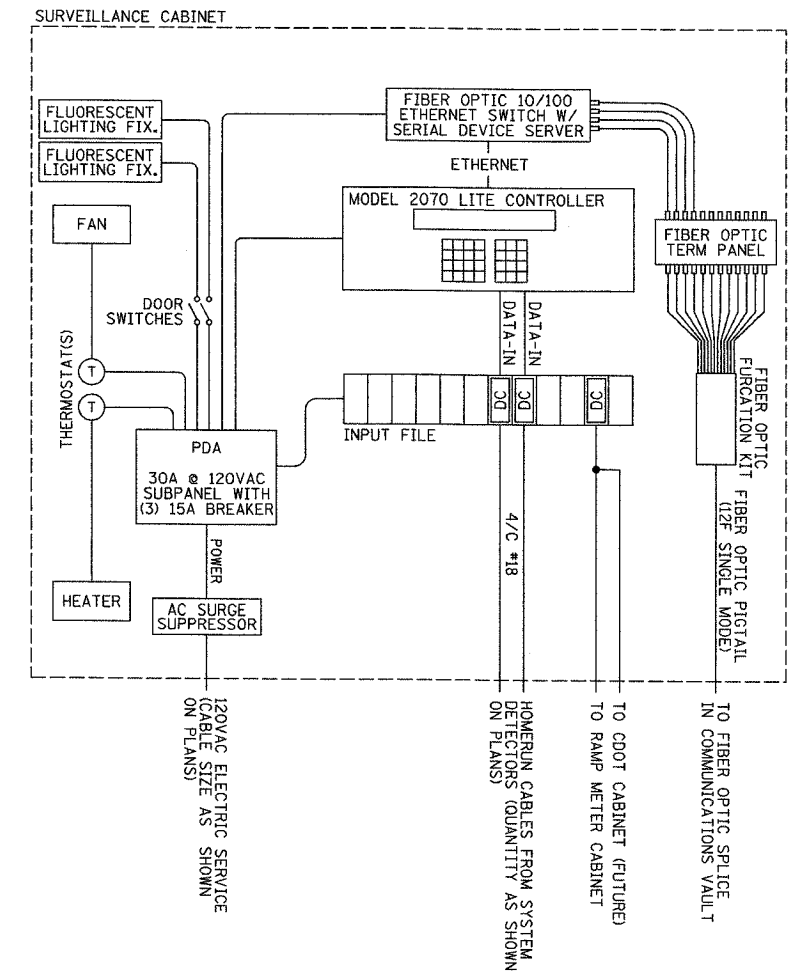
SECTION	COUNTY	TOTAL SHEETS	SHEET NO.
2003-0311	COOK	976	947
STA. TO STA.		FED. ROAD DIST. NO. ILLINOIS FED. AID PROJECT	
		62583	



EXIT RAMP CONFIGURATION  
NOT TO SCALE



EXIT RAMP QUEUE  
LINE DIAGRAM (TYPICAL)  
NOT TO SCALE



SYSTEM DETECTOR/EXIT RAMP QUEUE  
SINGLE LINE DIAGRAM (TYPICAL)  
NOT TO SCALE

ABBREVIATIONS  
DC - DETECTOR CARD  
LS - LOAD SWITCH  
SSF - SOLID STATE FLASHER

REVISIONS	
NAME	DATE

ILLINOIS DEPARTMENT OF TRANSPORTATION  
F.A.I. 94/90 (DAN RYAN EXPRESSWAY)  
31st STREET to I-57  
CABINET, MODEL 334 - WIRING DETAILS  
AND SCHEMATIC (SHEET 2 OF 3)  
SCALE: NOT TO SCALE  
DATE: October 29, 2004  
DRAWN BY: DHI  
CHECKED BY: JEZ

**Edwards AND Kelcey**  
ONE NORTH FRANKLIN  
CHICAGO, IL 60606  
PHONE: (312) 251-3000  
FAX: (312) 251-3015  
WEB: WWW.EKCORP.COM

PA03001910315 VIS 00000710202828-57 09/24/2004 10/14/2004