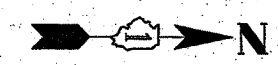


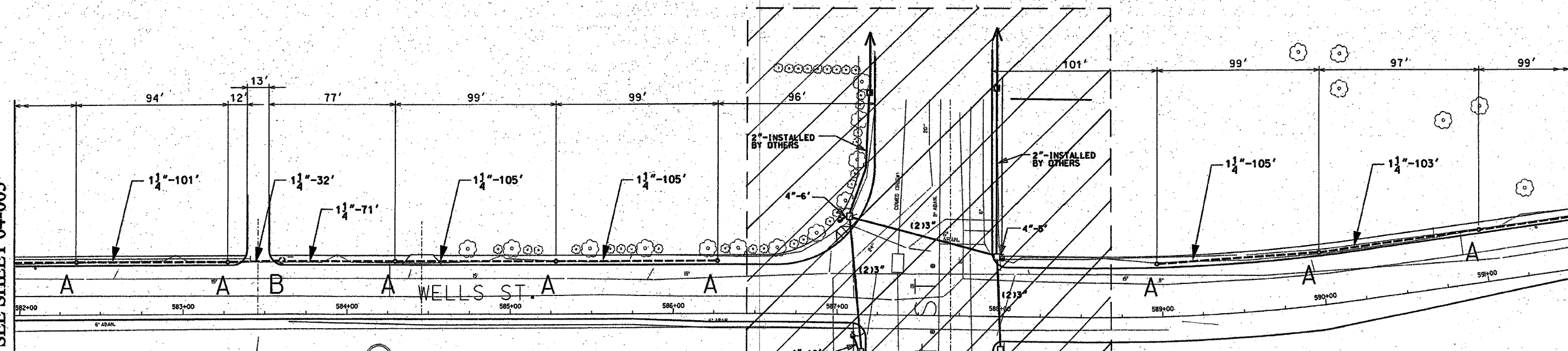
62806



F. A. RTE	SECTION	COUNTY	TOTAL SHEETS	SHEET NO
90/94	*	COOK	35	24
STA. 581+95	TO STA. 598+40			
FED. ROAD DIST. NO. 1	ILLINOIS	FED AID PROJECTS		
* 2004-067L				

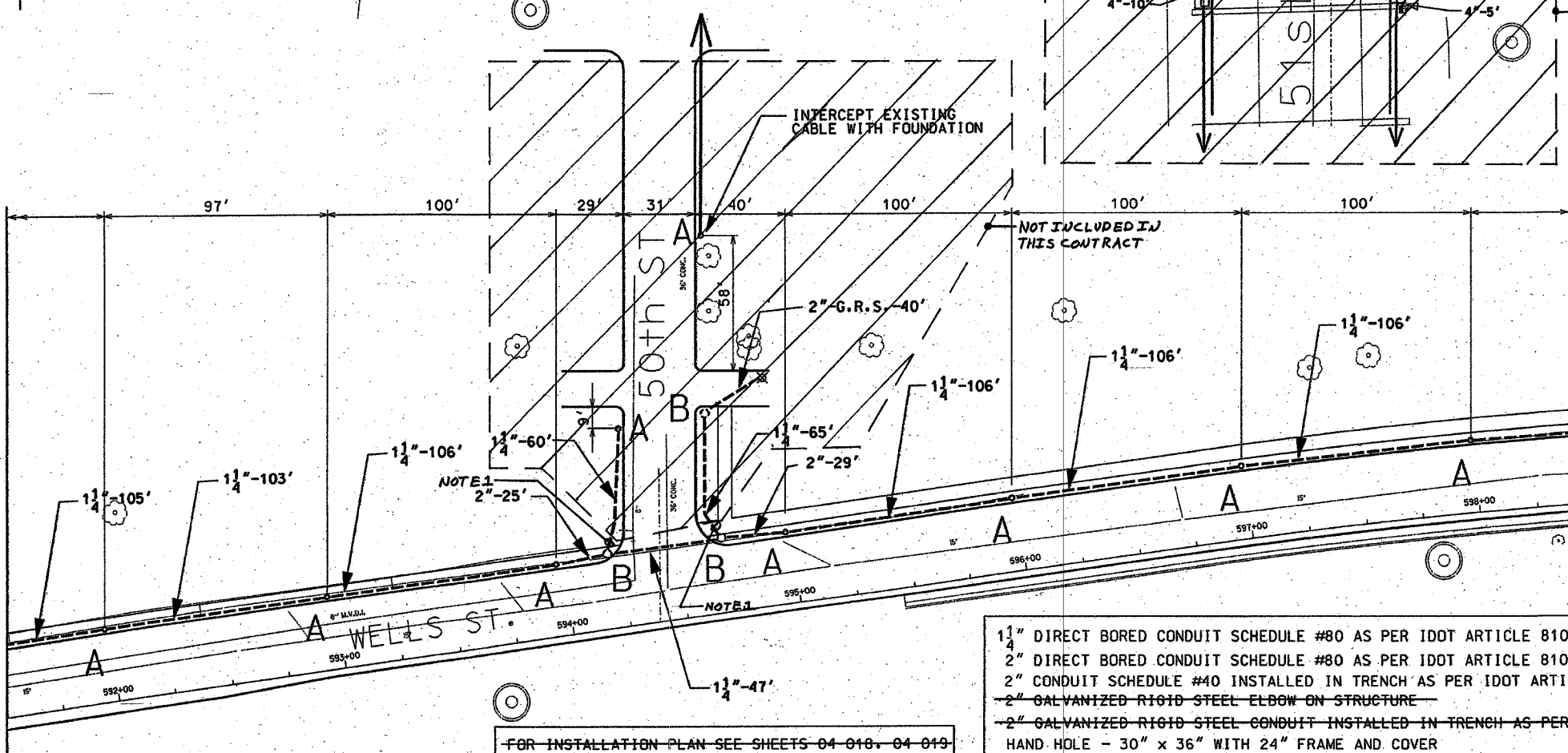
MATCH LINE
STATION 581+95
SEE SHEET 04-005

MATCH LINE
STATION 591+50



MATCH LINE
STATION 591+50

MATCH LINE
STATION 598+40
SEE SHEET 04-007



NOTES: CONTRACTOR IS TO INSTALL UNDERGROUND CONDUIT AND PULL ROPE BETWEEN FOUNDATIONS AS WELL AS PERFORM THE FOLLOWING WORK ITEMS ACCORDING TO BUREAU OF ELECTRICITY SPECIFICATIONS:

"A" - INSTALL 20" x 5' FOUNDATION, 10" B.C., 1" ANCHOR RODS AS PER DRAWING NO. 565, 2' OFF FACE OF CURB, UNLESS NOTED OTHERWISE. BUILD FOUNDATIONS FLUSH WITH SIDEWALK SURFACE.

"B" - INSTALL 30" HANDHOLE AS PER DRAWING NO. 867 WITH 24" FRAME AND COVER

NOTES:

1. PROVIDE A CONDUIT STUB AT HANDHOLE EXTENDING TO ONE FOOT PAST THE LIMITS OF SIDEWALK REPLACEMENT. PROVIDE A CONDUIT CAP FOR THE CONDUIT STUB. THE CONDUIT CAP WILL BE INCLUDED IN THE UNIT PRICE FOR THE CONDUIT OF SPECIFIED TYPE AND DIAMETER. NO SEPARATE PAYMENT WILL BE MADE. SEE IDOT CONTRACT NOS. 62586 AND 62795 FOR LIMITS OF SIDEWALK REPLACEMENT.

- 1 1/4" DIRECT BORED CONDUIT SCHEDULE #80 AS PER IDOT ARTICLE 810.03
- 2" DIRECT BORED CONDUIT SCHEDULE #80 AS PER IDOT ARTICLE 810.03
- 2" CONDUIT SCHEDULE #40 INSTALLED IN TRENCH AS PER IDOT ARTICLE 810.03
- 2" GALVANIZED RIGID STEEL ELBOW ON STRUCTURE
- 2" GALVANIZED RIGID STEEL CONDUIT INSTALLED IN TRENCH AS PER IDOT ARTICLE 810.03
- HAND HOLE - 30" x 36" WITH 24" FRAME AND COVER
- CONCRETE FOUNDATION - 5' x 20", 10" B.C., 1" ANCHOR RODS

FOR INSTALLATION PLAN SEE SHEETS 04-018, 04-019
FOR REMOVAL PLAN SEE SHEETS 04-025, 04-026

CITY OF CHICAGO		
<small>DEPT. OF STREETS AND SANITATION BUREAU OF ELECTRICITY DIVISION OF ELECTRICAL ENGINEERING</small>		
DRAFTSMAN: B. GARNSEY	CHIEF DRAFTSMAN: ROBERT CARTER	ENGINEER: B. GARNSEY
SUPERVISING ENGINEER:	ELEC. DESIGN ENGR.:	DWG. NO.:
ENGINEER OF ELECTRICITY:		04-006
GEN'L SUPT. OF ELECTRICITY:		DATE: 1/20/04
DEPUTY COMMISSIONER:		SCALE: 1" = 30'
SIZE: 22" 36"	SCALE: 1" = 30'	DATE: 1/20/04

ILLINOIS DEPARTMENT OF TRANSPORTATION
F.A.I. 90/94 (DAN RYAN EXPRESSWAY)
59th St. TO 47th St. (FRONTAGE ROADS)

**STREET LIGHTING
UNDERGROUND CONDUIT FACILITIES**

SCALE: 1" = 30' DRAWN BY: B.T.G.
DATE: February 11, 2005 CHECKED BY: O.L.

REVISIONS	
NAME	DATE