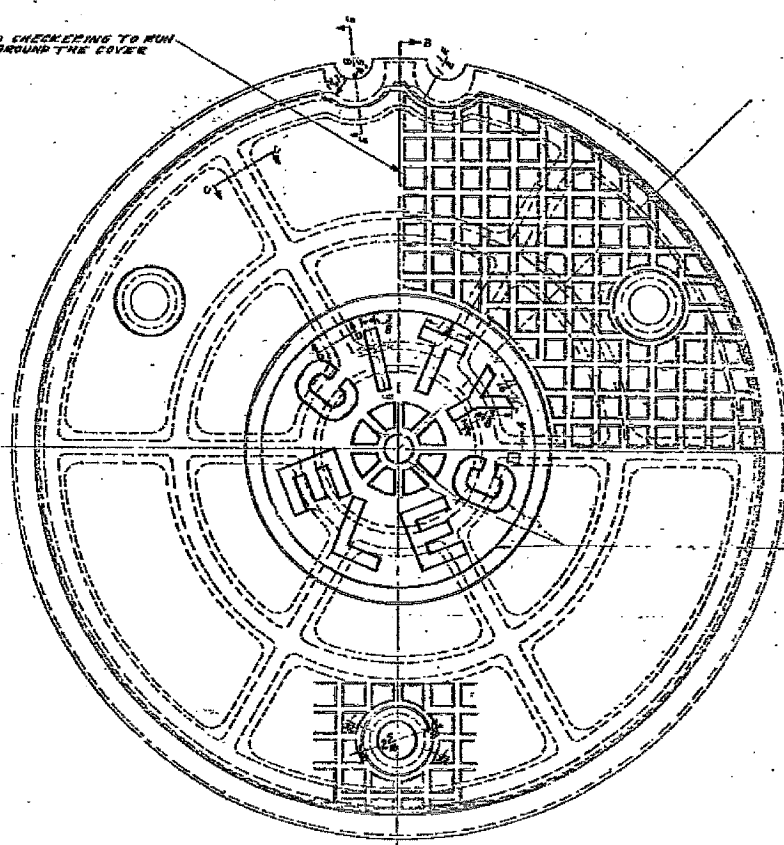
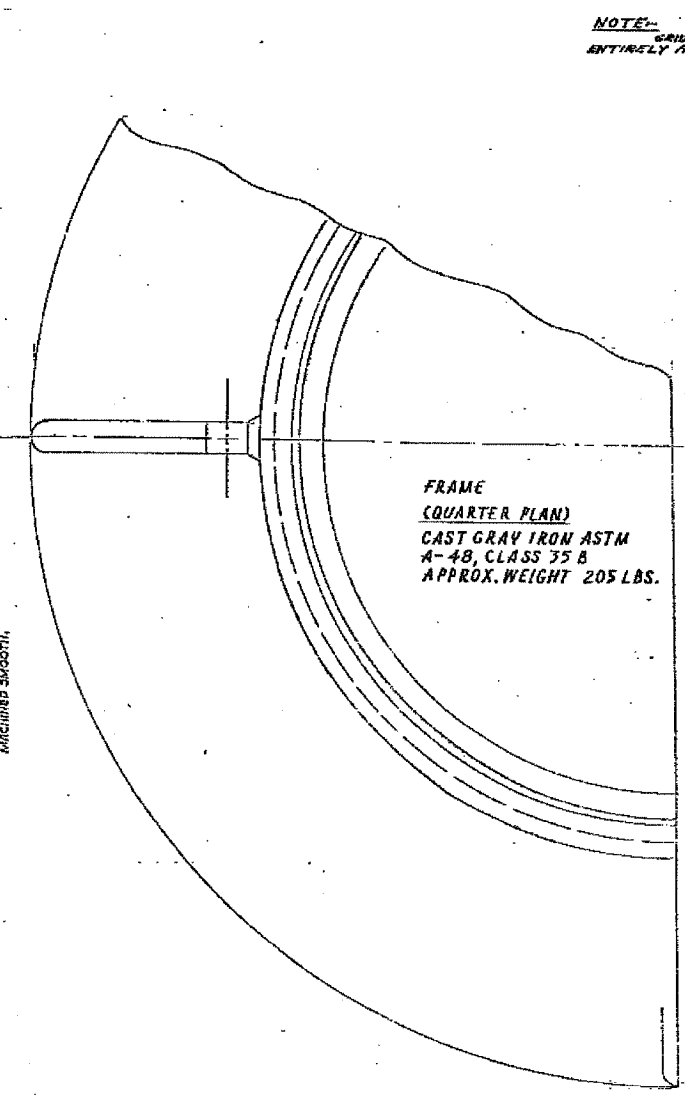
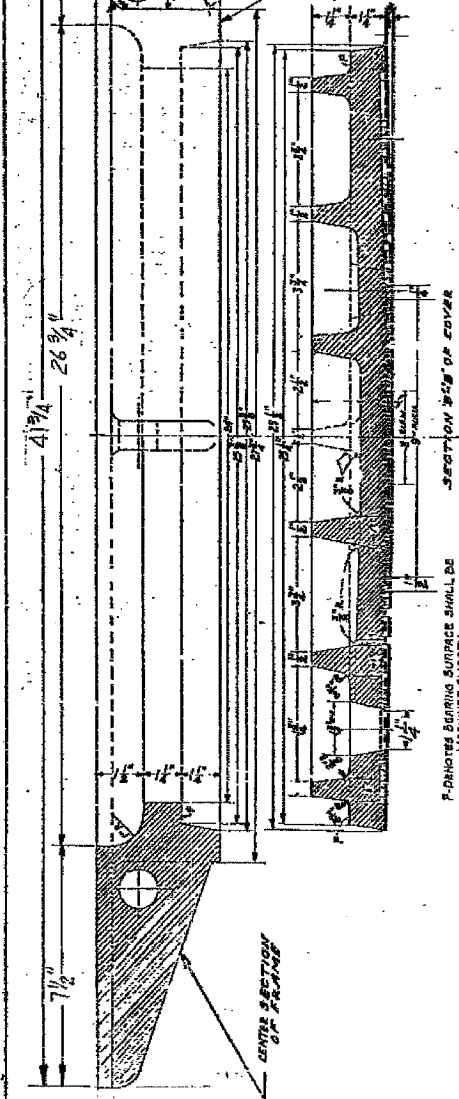
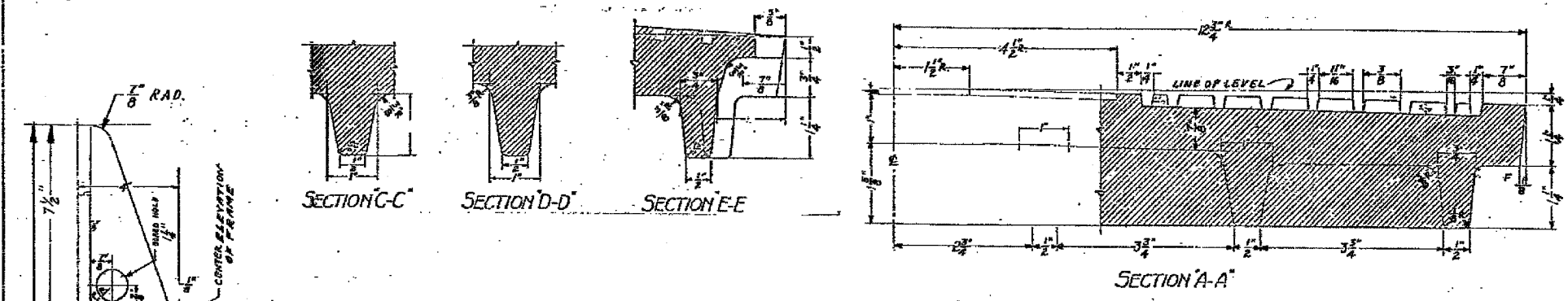


F.A.I. RTE.	SECTION	COUNTY	TOTAL SHEETS	SHEET NO.
90/94	2004-067L	COOK	35	34
STA.	TO STA.			
FED. ROAD DIST. NO. 1 ILLINOIS FED. AID PROJECT				
62806				



NOTE: GRID CHECKING TO RUN ENTIRELY AROUND THE COVER

NOTE: THE TOP SURFACE OF THE 3 CIRCLES AND ALL OF THE LETTERS TO BE RAISED 1/8" ABOVE THE SURFACE WITHIN THE 9" DIAMETER WITH THE DRAFT ANGLE.

COMMODITY CODE  
FRAME  
COVER - 02 4574-5040

SUPERSEDES DWG #10797  
DATED 2-10-35

**24" DIA. CIRCULAR MANHOLE  
FRAME & COVER WITH 41 3/4" O.D.  
FRAME**

CITY OF CHICAGO  
DEPT. OF STREET AND SANITATION  
BUREAU OF ELECTRICAL  
PROTECTOR ELECTRIC CONTRACTORS

DRAWN BY: <b>A. JOHNSON</b>	DESIGNED BY: <b>C. RESPINO</b>	CHECKED BY: <b>M. DE BARTOLO</b>
SUPERVISING ENGINEER:	ELECT. DESIGN ENGINEER:	DIVISION:
ENGINEER OF ELECTRICALITY:		
DATE: APR. 13, 1992		<b>872</b>
SCALE: 1/4" = 1'-0"		DATE: 4-24-92

REVISIONS	
NAME	DATE

ILLINOIS DEPARTMENT OF TRANSPORTATION  
F.A.I. 90/94 (DAN RYAN EXPRESSWAY)  
59th ST TO 47th ST (FRONTAGE ROAD)  
CITY OF CHICAGO LIGHTING CONDUIT & FOUNDATIONS  
WELLS STREET

**BOE STANDARD DETAILS**

SCALE: NONE  
DATE: February 11, 2005  
DRAWN BY: HAR  
CHECKED BY: WDS

BOE-6

02/02/2005 09:02:35 AM \\net\it\p40468\p40468\elec\14\cnr\9\sl\cnr\trac\902\boe050\2006\ca.st