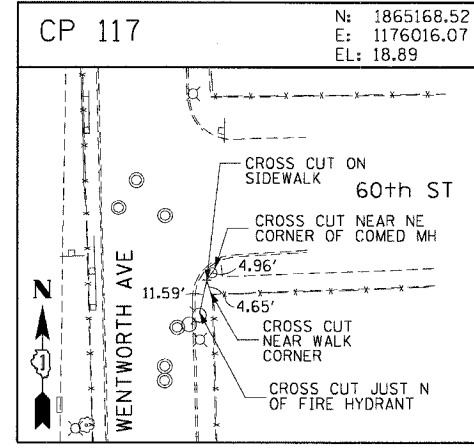
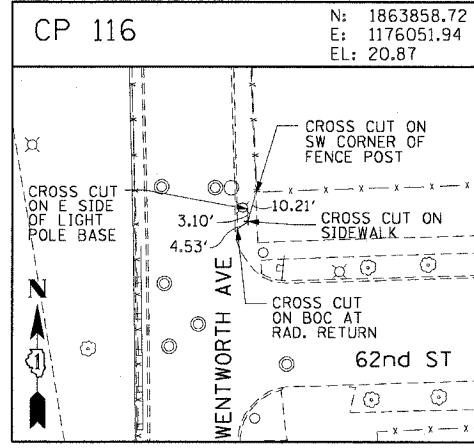
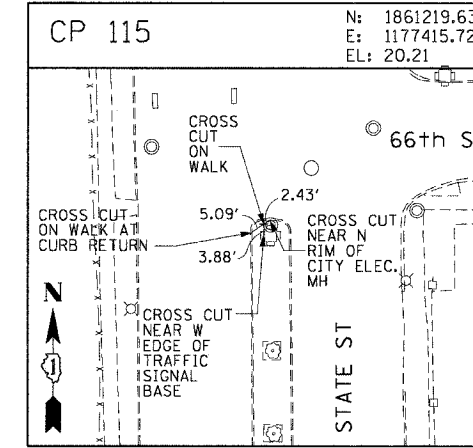
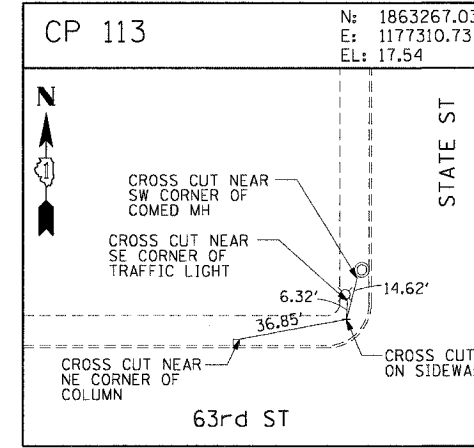
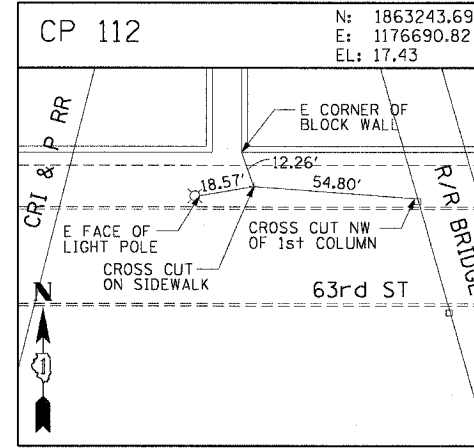
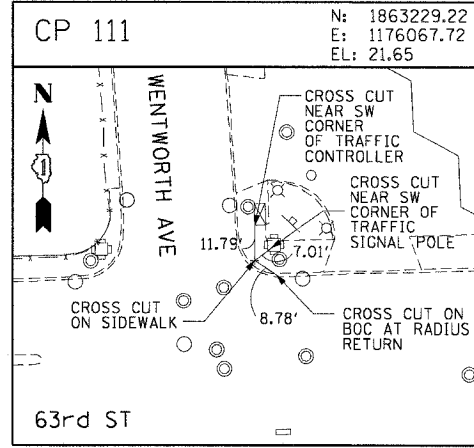
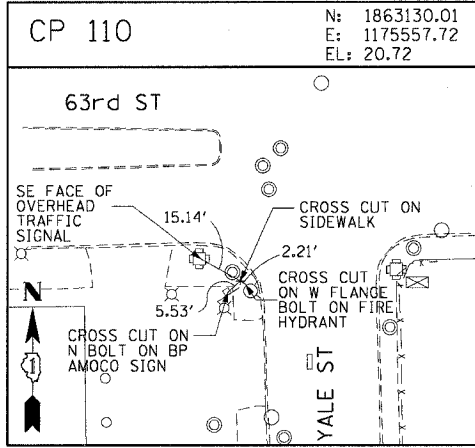
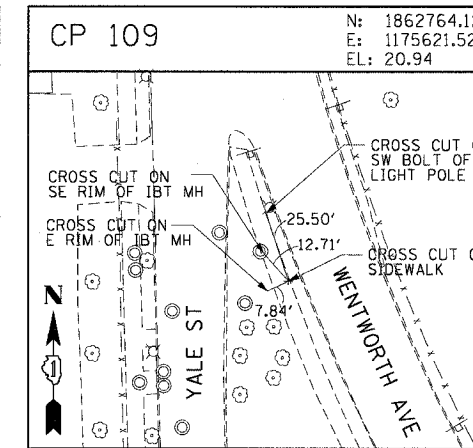
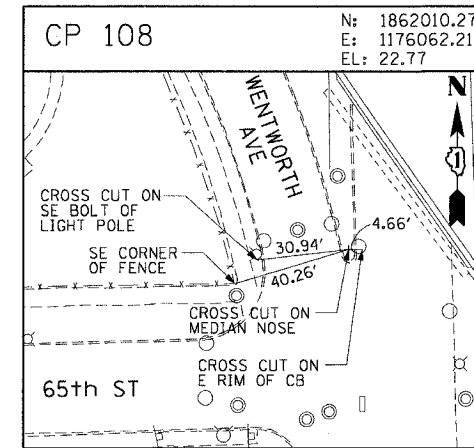
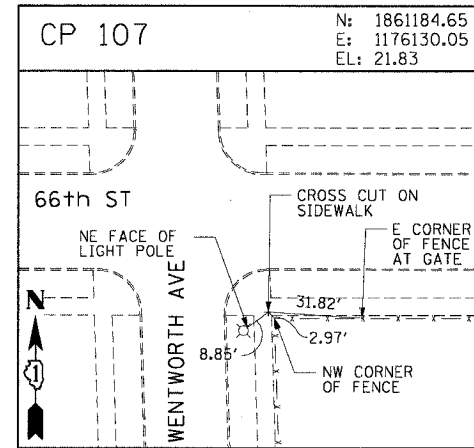
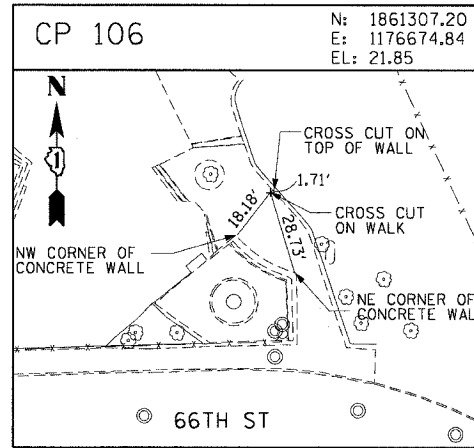
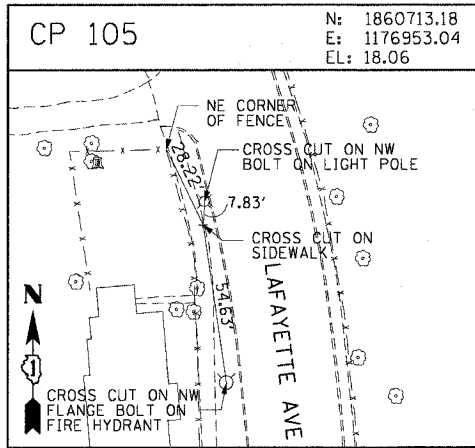
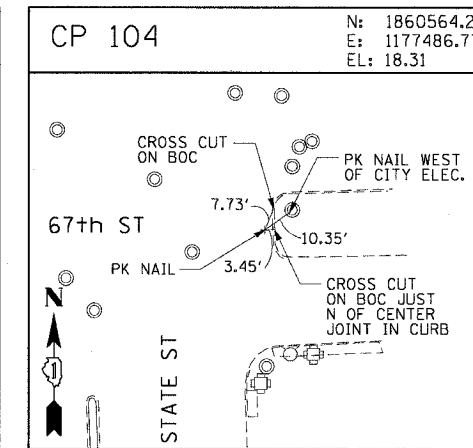
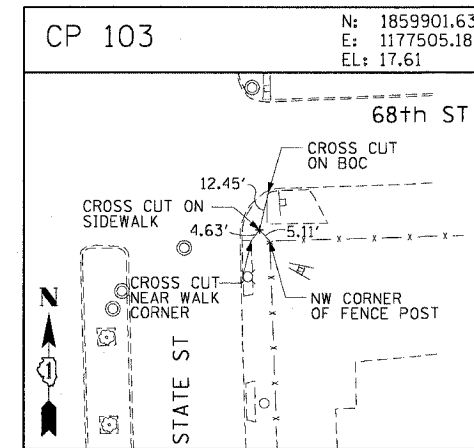
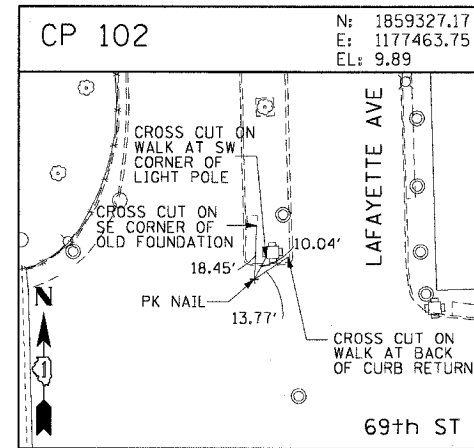
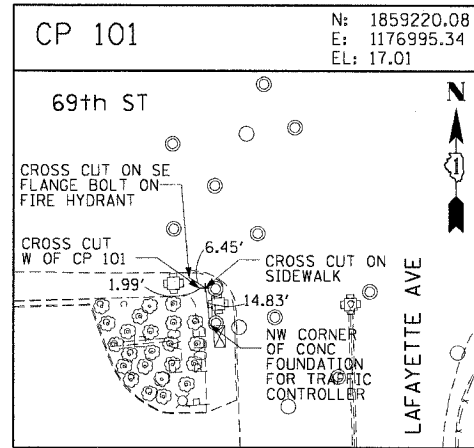
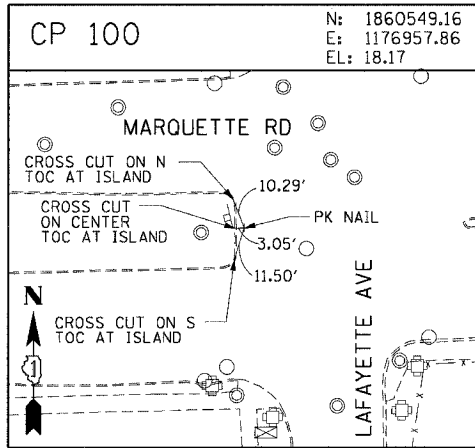


F.A.I. RTE.	SECTION	COUNTY	TOTAL SHEETS	SHEET NO.
90/94	2004-068L	COOK	37	16
STA.		TO STA.		
FED. ROAD DIST. NO. 1 ILLINOIS FED. AID PROJECT				
62807				



**CTE ENGINEERS**  
CONOR TOWNSEND ENVIRONMENTAL ENGINEERS, INC.  
303 EAST WACKER DRIVE, SUITE 600  
CHICAGO ILLINOIS 60601-5225, PHONE: (312) 938-0300

REVISIONS	
NAME	DATE

ILLINOIS DEPARTMENT OF TRANSPORTATION  
F.A.I. 90/94 (DAN RYAN EXPRESSWAY)  
59th ST TO 47th ST (FRONTAGE ROAD)  
CITY OF CHICAGO LIGHTING CONDUIT & FOUNDATIONS  
WENTWORTH AVENUE

**SURVEY TIES AND CONTROL POINTS**

SCALE: 1"=30'  
DATE: February 11, 2005

DRAWN BY: MRK  
CHECKED BY: JAL

02/10/2005 09:09:05 AM