

F.A.P. RTE.	SECTION	COUNTY	TOTAL SHEETS	SHEET NO.
305	2004-108 BR	COOK	72	2

CONTRACT NO. 62853

INDEX OF SHEETS, HIGHWAY STANDARDS AND GENERAL NOTES

INDEX OF SHEETS

SHEET NO.	DESCRIPTION
1	COVER SHEET
2	INDEX OF SHEETS, HIGHWAY STANDARDS, AND GENERAL NOTES
3-5	SUMMARY OF QUANTITIES
6	SUGGESTED CONSTRUCTION SCHEDULE
7-8	TYPICAL SECTION
9-10	SCHEDULE OF QUANTITIES
11-14	ALIGNMENT, TIES AND BENCHMARKS
15-16	EXISTING AND PROPOSED ROADWAY PLAN
17-17A	ROADWAY DETAILS
18	MAINTENANCE OF TRAFFIC STAGING, NOTES & LEGEND
19-20	MAINTENANCE OF TRAFFIC - FRONTAGE ROAD CLOSURE
21-23	MAINTENANCE OF TRAFFIC - STAGE 2
24	MAINTENANCE OF TRAFFIC - STAGE 3
25-27	MAINTENANCE OF TRAFFIC DETAILS
27A-27D	SUBSURFACE UTILITY ENGINEERING PLANS
28	PAVMENT MARKING PLAN
29	DISTRICT ONE TYPICAL PAVEMENT MARKINGS
30-40	WOLF ROAD SIGNAL
41-46	WEST FRONTAGE ROAD BRIDGE PLANS
47-53	EAST FRONTAGE ROAD BRIDGE PLANS
54-58	WISCONSIN CENTRAL RAILROAD BRIDGE PLANS
59-72	WOLF ROAD BRIDGE

HIGHWAY STANDARDS

515001-02	NAME PLATE FOR BRIDGES
606001-02	CONCRETE CURB TYPE B AND COMBINATION CONCRETE CURB AND GUTTER
701301-02	LANE CLOSURE 2L, 2W SHORT TIME OPERATIONS
701411-03	LANE CLOSURE MULTILANE AT ENTRANCE OR EXIT RAMP FOR SPEEDS GREATER THAN OR EQUAL TO 45 MPH
701421-01	LANE CLOSURE, MULTILANE, DAY OPERATIONS ONLY, FOR SPEEDS GREATER THAN OR EQUAL TO 45 MPH TO 55 MPH
701422-01	LANE CLOSURE, MULTILANE, FOR SPEEDS GREATER THAN OR EQUAL TO 45 MPH TO 55 MPH
701501-03	URBAN LANE CLOSURE 2L, 2W UNDIVIDED
701601-04	URBAN LANE CLOSURE MULTILANE 1W OR 2W WITH NONTRAVERSABLE MEDIAN
701602-02	URBAN LANE CLOSURE, MULTILANE, 2W WITH BIDIRECTIONAL LEFT TURN LANE
701606-04	URBAN LANE CLOSURE MULTILANE 2W WITH MOUNTABLE MEDIAN
701701-04	URBAN LANE CLOSURE MULTILANE INTERSECTION
701801-03	LANE CLOSURE MULTILANE 1W OR 2W CROSSWALK OR SIDEWALK CLOSURE
702001-05	TRAFFIC CONTROL DEVICES
704001-02	TEMPORARY CONCRETE BARRIER
780001-01	TYPICAL PAVEMENT MARKINGS
814001	CONCRETE HANDHOLES
857001	STANDARD PHASE DESIGNATION DIAGRAMS AND PHASE SEQUENCES
880001	SPAN WIRE MOUNTED SIGNALS AND FLASHING BEACON INSTALLATION
886001	DETECTOR LOOP INSTALLATIONS
000001-04	STANDARD SYMBOLS, ABBREVIATIONS AND PATTERNS
001001	AREAS OF REINFORCEMENT REBARS
001006	DECIMAL OF AN INCH AND OF A FOOT
635006-02	
635011-01	

GENERAL NOTES - ROADWAY

ALL ELEVATIONS REFER TO 1929 N.G.V.D. DATUM.

THE CONTRACTOR WILL BE REQUIRED TO OBTAIN PERMITS AS REQUIRED AND COORDINATE ALL OPERATIONS WITH THE PALWAUKEE AIRPORT AND THE ILLINOIS DIVISION OF AERONAUTICS FOR ACTIVITIES THAT MAY IMPACT AIRPORT OPERATIONS. THIS WILL INCLUDE EQUIPMENT PARKING AND/OR STORAGE OF MATERIALS.

THE CONTRACTOR WILL BE PROVIDED COPIES OF ALL PERMITS ISSUED TO DATE.

THE CONTRACTOR'S OPERATIONS AND TEMPORARY STORAGE ACTIVITIES SHALL BE LIMITED TO THE WORK AREA AND/OR CONSTRUCTION LIMITS, AND THE AREA IMMEDIATELY ADJACENT TO PROPOSED CURB LINES. ANY ADDITIONAL STAGING AREAS ADJACENT TO THE PROJECT ARE SUBJECT TO PRIOR APPROVAL BY THE ENGINEER. NO ADDITIONAL COMPENSATION WILL BE ALLOWED TO THE CONTRACTOR FOR COMPLIANCE WITH THE ABOVE REQUIREMENTS.

THE CONTRACTOR'S PERSONNEL SHALL NOT BE ALLOWED TO PARK PERSONAL VEHICLES IN THE WORK AREA AND/OR CONSTRUCTION LIMITS.

WHERE ARTIFICIAL LIGHTING IS UTILIZED IN NIGHT OPERATIONS, THE CONTRACTOR SHALL EXERCISE THE UTMOST PRECAUTIONS IN PREVENTING ADVERSE VISIBILITY TO THE MOTORING PUBLIC, ADJOINING RESIDENTIAL AREAS AND AIRPORT OPERATIONS.

NO ASBESTOS MATERIALS WERE DETECTED IN ANY BRIDGE CONDITION SURVEYS PERFORMED BY THE STATE.

THE ENGINEER SHALL BE THE SOLE JUDGE CONCERNING CURING TIME FOR THE VARIOUS BITUMINOUS LIFTS.

THE BITUMINOUS MATERIAL PRIME COAT QUANTITIES HAVE BEEN DETERMINED USING A RATE OF .5 L/M² (1 GAL. PER SQ. YD.). THE AGGREGATE PRIME COAT APPLICATION WAS DETERMINED AT A RATE OF 0.0015 M TON PER SQUARE METER (0.002 TONS PER SQUARE YARD).

SAW CUTTING PRIOR TO ANY REMOVAL ITEMS NOTED ON THE PLANS OR DIRECTED BY THE ENGINEER SHALL BE CONSIDERED INCLUDED IN THE COST OF THE ITEM BEING REMOVED.

CONTRACT PRICE FOR MEDIAN REMOVAL SHALL INCLUDE REMOVAL OF ANY CURB AND GUTTER ADJACENT TO PAVED MEDIAN.

PERMANENT PAVEMENT MARKING ON THE FRONTAGE ROADS WILL BE PLACED BY OTHERS. THERE WILL BE NO PERMANENT MARKING ON THE FRONTAGE ROAD STRUCTURES.

TWO (2) WEEKS PRIOR TO PLACING PERMANENT PAVEMENT MARKINGS, CONTACT WALTER CZARNY, AREA TRAFFIC FIELD ENGINEER AT 773-685-8386.

PERIODIC CLEANING OF THE INLET FILTERS, AS DIRECTED BY THE ENGINEER, SHALL CONSIST OF INSPECTION, CLEANING (INCLUDES REMOVAL AND PROPER DISPOSAL OF DEBRIS AND SILT THAT HAS ACCUMULATED IN THE FILTER FABRIC BAG), BY VACTORING, REMOVING AND DUMPING, OR ANY OTHER METHOD APPROVED BY THE ENGINEER.

GENERAL NOTES - UTILITIES

BEFORE STARTING ANY EXCAVATION, THE CONTRACTOR SHALL CALL "JULIE" AT (800) 892-0123 TO HAVE EXISTING UNDERGROUND UTILITIES LOCATED IN THE FIELD (48 HOURS NOTIFICATION IS REQUIRED).

THE CONTRACTOR SHALL PROTECT EXISTING AND NEW UTILITIES. WHEN CONSIDERED NECESSARY BY THE ENGINEER BY METHODS APPROVED BY THE ENGINEER AND SHALL BRACE AND SUPPORT THE UTILITIES PROPERLY IN ORDER TO PREVENT SETTLEMENT, DISPLACEMENT, OR DAMAGE TO THE UTILITIES. THE PROTECTION OF THE UTILITIES AS SPECIFIED HEREIN WILL NOT BE PAID FOR SEPARATELY, BUT THE COST THEREOF SHALL BE INCLUDED IN THE CONTRACT.

THE CONTRACTOR SHALL COORDINATE CONSTRUCTION ACTIVITIES WITH THE RESPECTIVE UTILITIES AND THE LOCAL AGENCIES INVOLVED.

GENERAL NOTES - FEDERAL AVIATION ADMINISTRATION

THE TALLEST OBJECT OR CONSTRUCTION EQUIPMENT ALLOWED FOR USE IN THE VICINITY OF WOLF ROAD IS LIMITED TO 20 FEET ABOVE EXISTING GROUND UNLESS PRIOR WRITTEN AUTHORIZATION IS OBTAINED FROM THE AIRPORT MANAGER AND THE ILLINOIS DEPARTMENT OF TRANSPORTATION, DIVISION OF AERONAUTICS.

ALL OPERATIONS SHALL BE IN CONFORMANCE WITH AC 150/5370-2E (LATEST EDITION) SAFETY DURING CONSTRUCTION.

PORTABLE FLOOD LIGHTING FOR NIGHTTIME CONSTRUCTION SHALL BE POSITIONED SO AS NOT TO INTERFERE WITH AIRPORT OPERATIONS.

PALWAUKEE MUNICIPAL AIRPORT WILL BE IN OPERATION DURING THE CONSTRUCTION OF THIS PROJECT. COORDINATION OF WORK WITH THE AIRPORT IS MANDATORY SO AS TO MINIMIZE IMPACTS ON AIRPORT OPERATIONS. THE CONTRACTOR SHALL CONTACT THE AIRPORT MANAGER TEN (10) WORKING DAYS IN ADVANCE OF THE START OF CONSTRUCTION SO THAT THE APPROPRIATE NOTAMS MAY BE ISSUED.

CONTRACTOR WILL BE REQUIRED TO PUT AIRPORT FLAGS AND HAVE BEACON LIGHTS ON ALL EQUIPMENT AT ALL TIMES DURING CONSTRUCTION. SEE FLAG DETAIL, THIS SHEET.

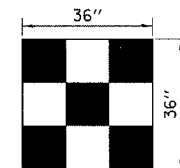
CONTRACTOR SHALL STORE EQUIPMENT AND MATERIALS IN SUCH A MANNER AS NOT TO VIOLATE FEDERAL AVIATION ADMINISTRATION PART 77 IMAGINARY SURFACES ON RUNWAY AND TAXIWAY SAFETY AREAS.

CONTRACTOR SHALL NOTIFY THE AIRPORT MANAGER TEN (10) WORKING DAYS IN ADVANCE OF ANY PLANNED CONSTRUCTION WITHIN RUNWAY APPROACH SURFACES.

TEMPORARY SIGNAL POLES SHALL NOT BE ANY HIGHER THAN THE EXISTING PERMANENT SIGNAL POLES AND SHALL NOT BE PLACED ANY CLOSER TO THE RUNWAY SIX CENTERLINE, SHOWN ON SHEET 16, THAN THE EXISTING PERMANENT SIGNAL POLES.

COMMITMENTS

NONE.



CONSTRUCTION EQUIPMENT AND TRUCK SIGNAL FLAG

ILLINOIS DEPARTMENT OF TRANSPORTATION
PALATINE ROAD UNDER WCRR, UNDER W. FRONTAGE RD.,
UNDER E. FRONTAGE RD. & UNDER WOLF RD.

GENERAL NOTES

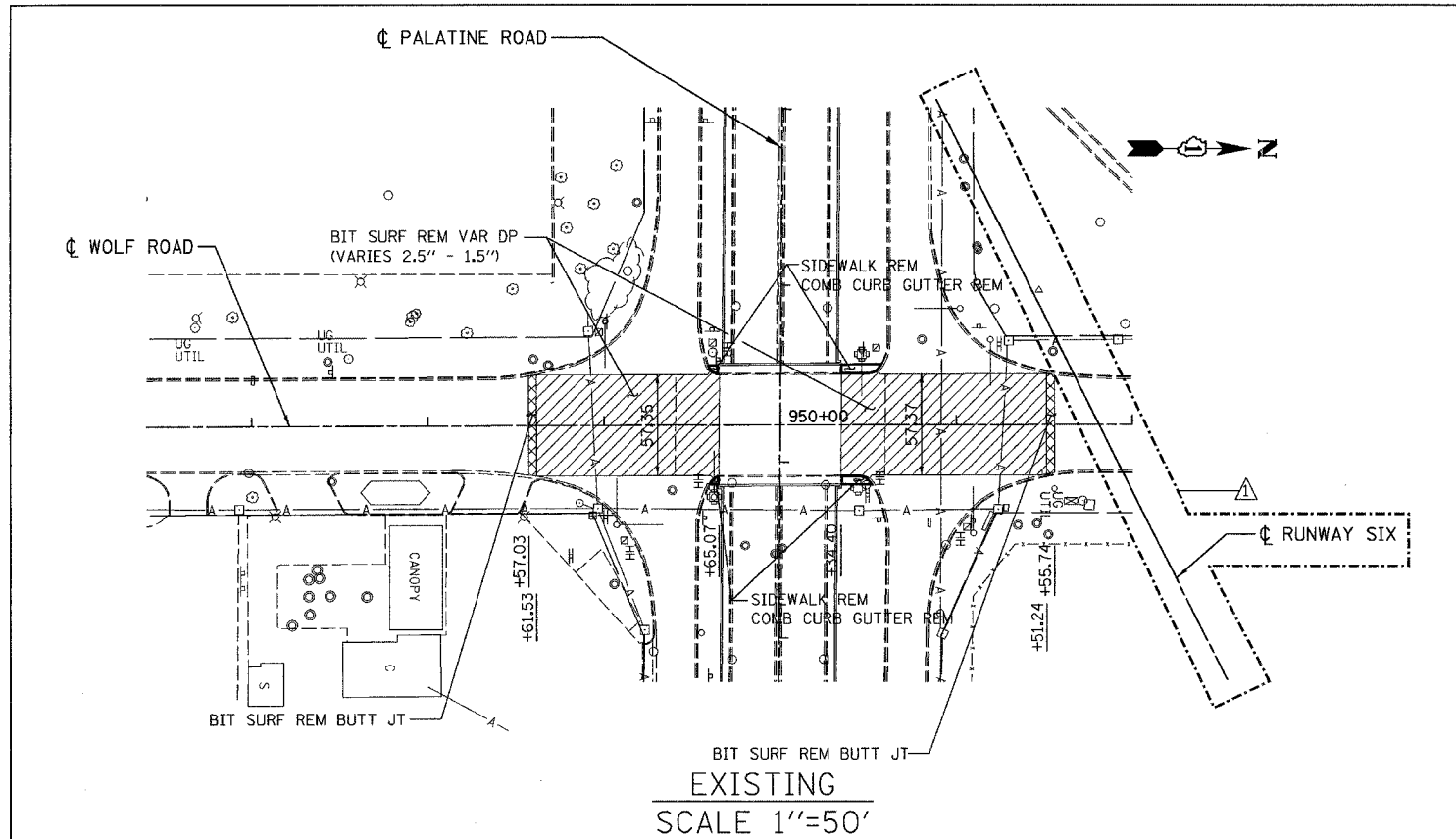
REVISIONS	
NAME	DATE
REVISOR - JBS	4/19/05

SCALE: NONE
DATE 02/05
DRAWN BY ACE/CAD
CHECKED BY TAE

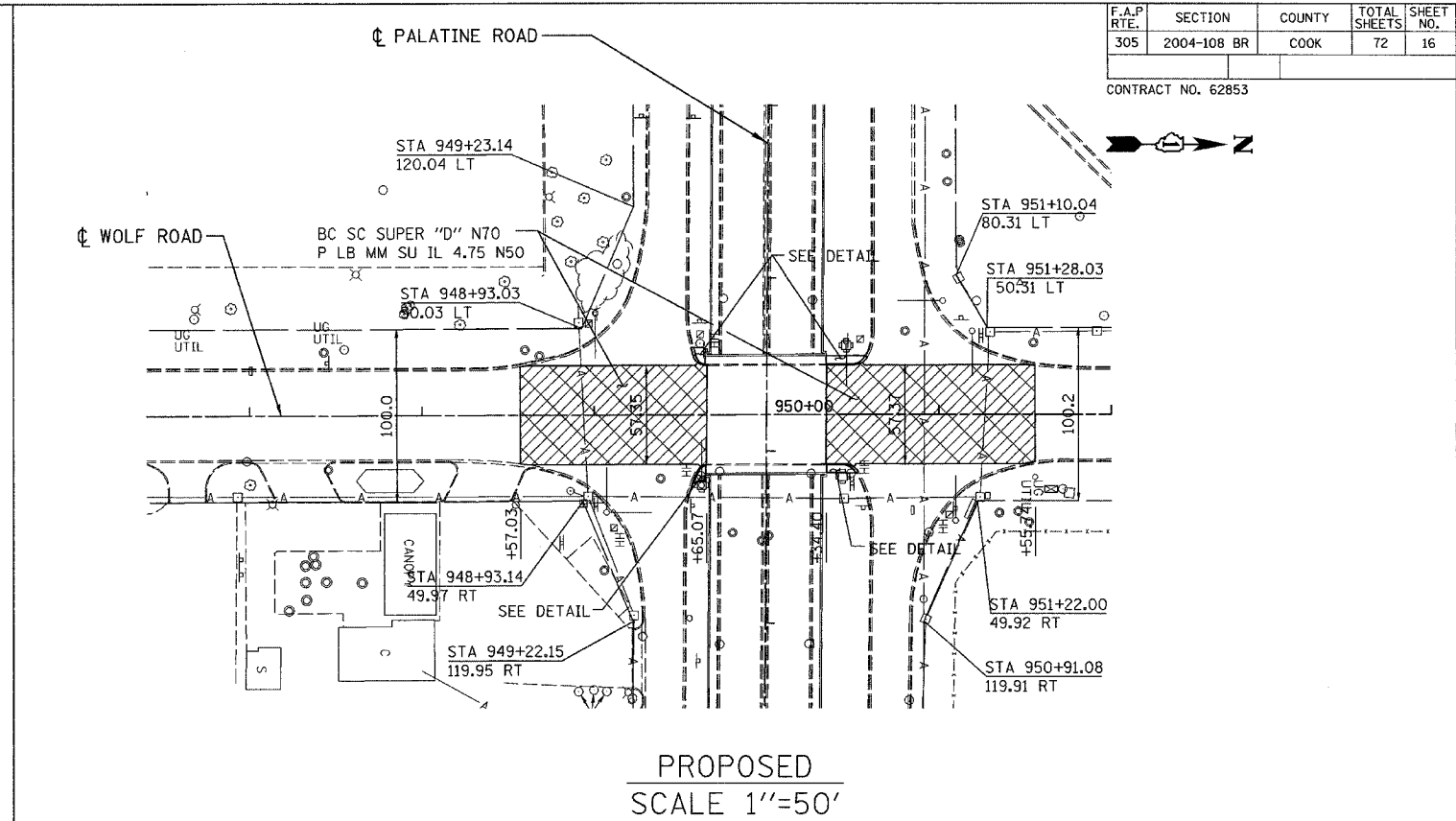


F.A.P. RTE.	SECTION	COUNTY	TOTAL SHEETS	SHEET NO.
305	2004-108 BR	COOK	72	16

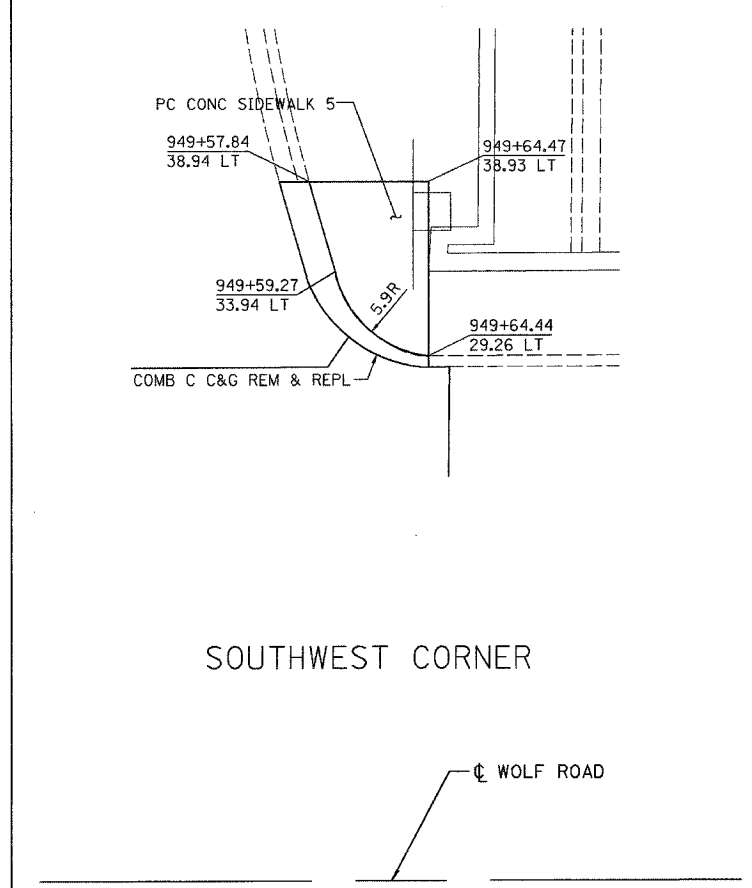
CONTRACT NO. 62853



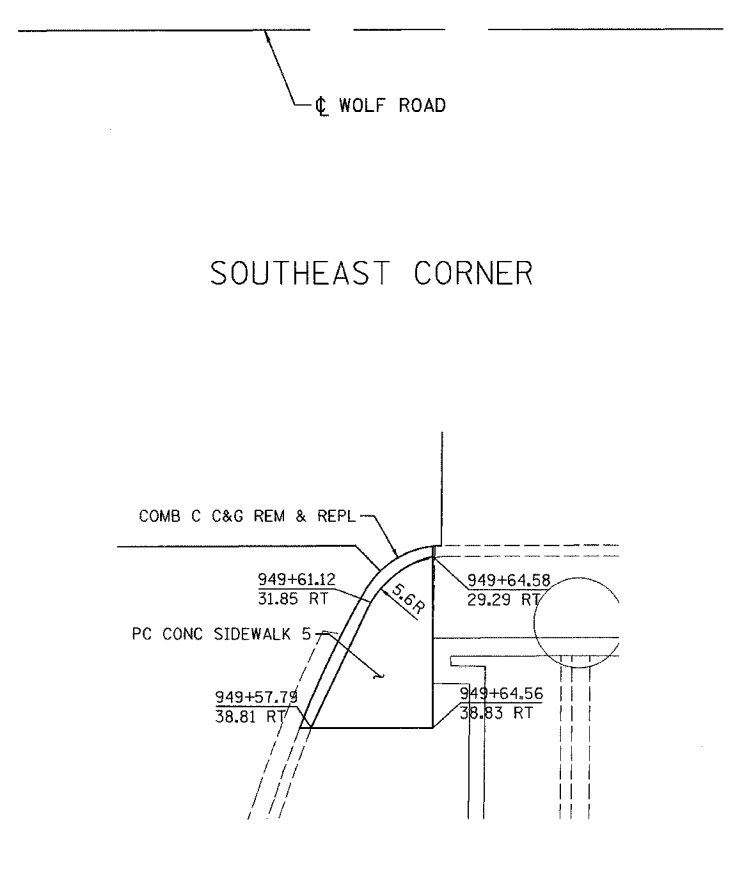
EXISTING
SCALE 1"=50'



PROPOSED
SCALE 1"=50'

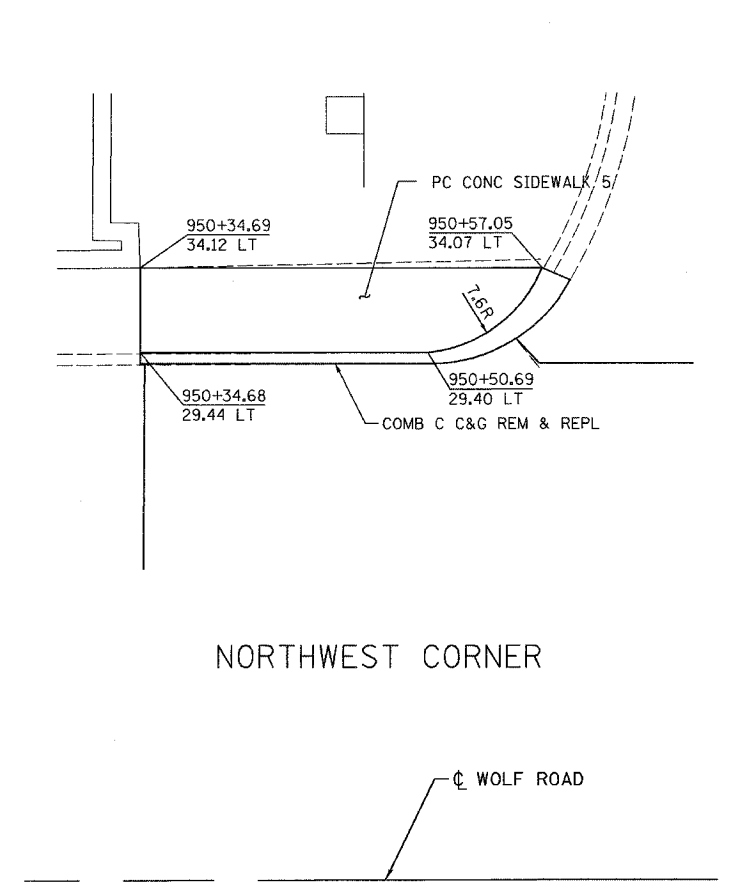


SOUTHWEST CORNER

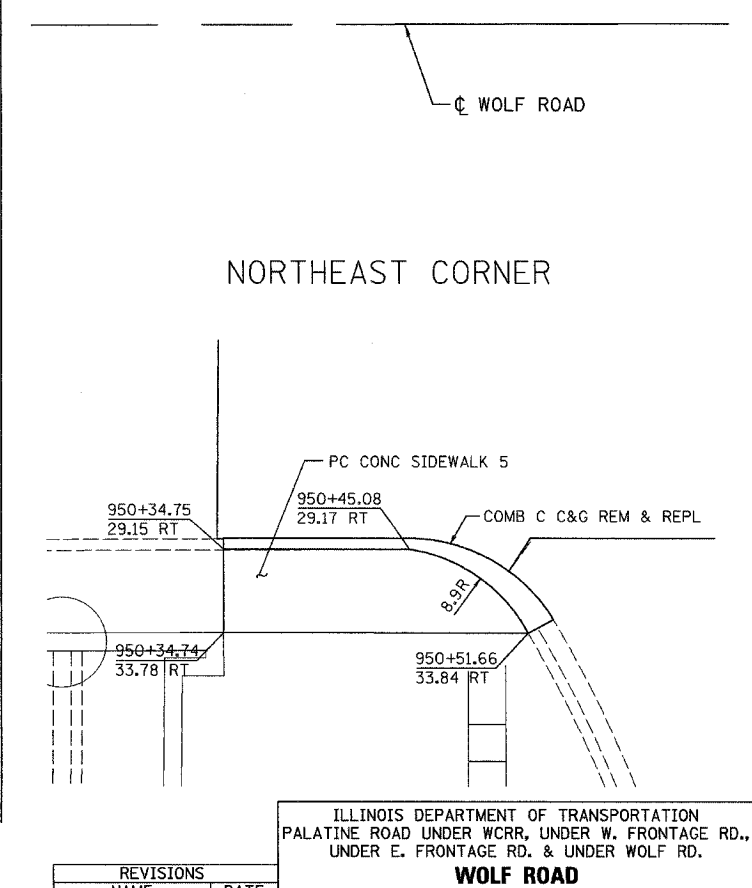


SOUTHEAST CORNER

SIDEWALK DETAILS
NTS



NORTHWEST CORNER



NORTHEAST CORNER

REVISIONS	
NAME	DATE
REVISED - JBS	4/19/05

ILLINOIS DEPARTMENT OF TRANSPORTATION
PALATINE ROAD UNDER W.C.R.R., UNDER W. FRONTAGE RD.,
UNDER E. FRONTAGE RD. & UNDER WOLF RD.

**WOLF ROAD
EXISTING AND PROPOSED
ROADWAY PLAN**

SCALE: AS NOTED
DATE 02/05
DRAWN BY ACE/CAD
CHECKED BY TAE



I:\2004\05\Palatine\wp\dlr 04/19/05 02:15:43 PM