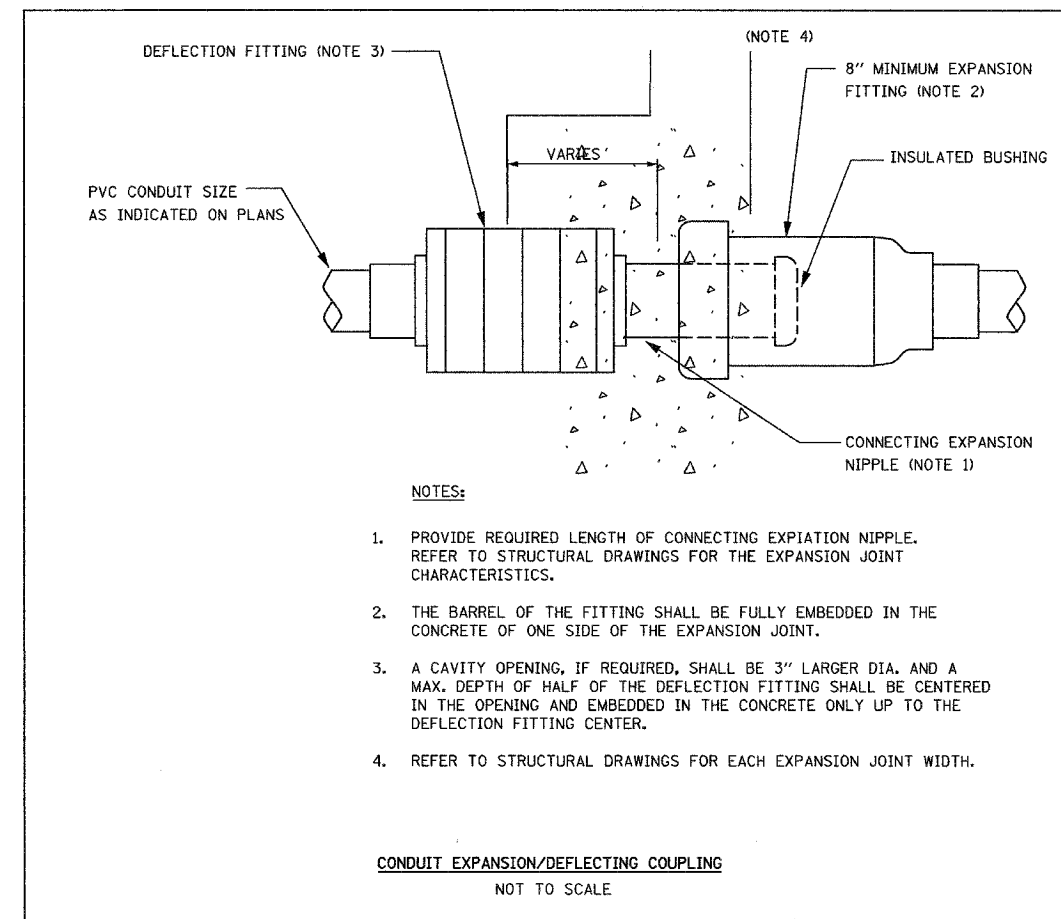
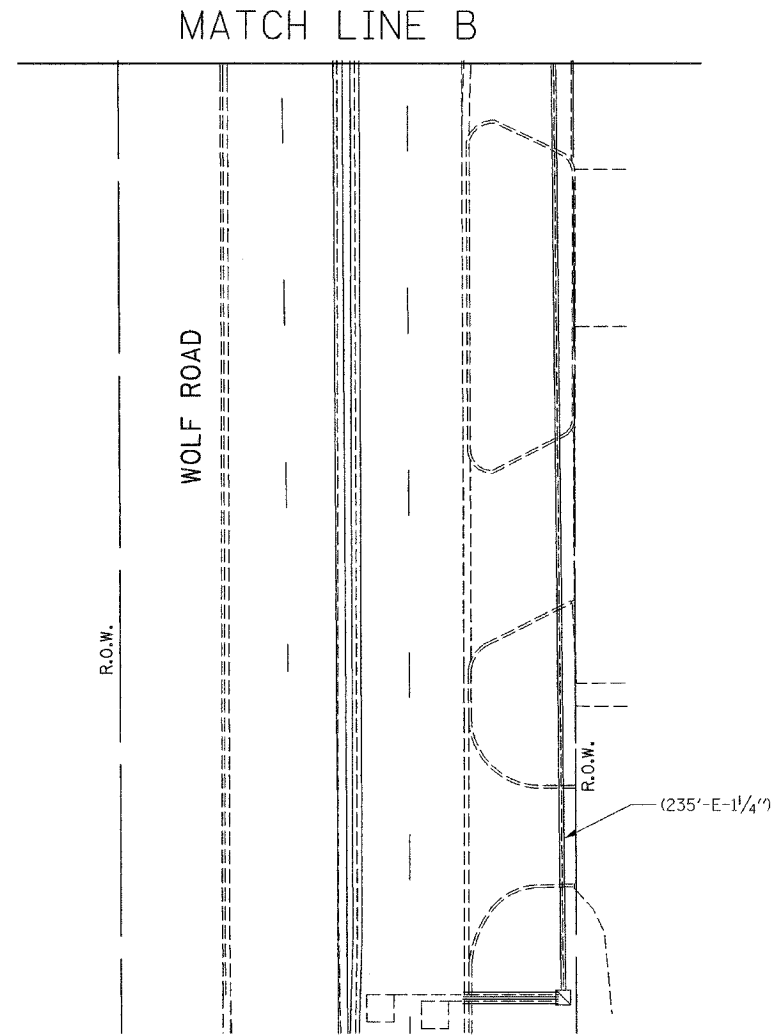
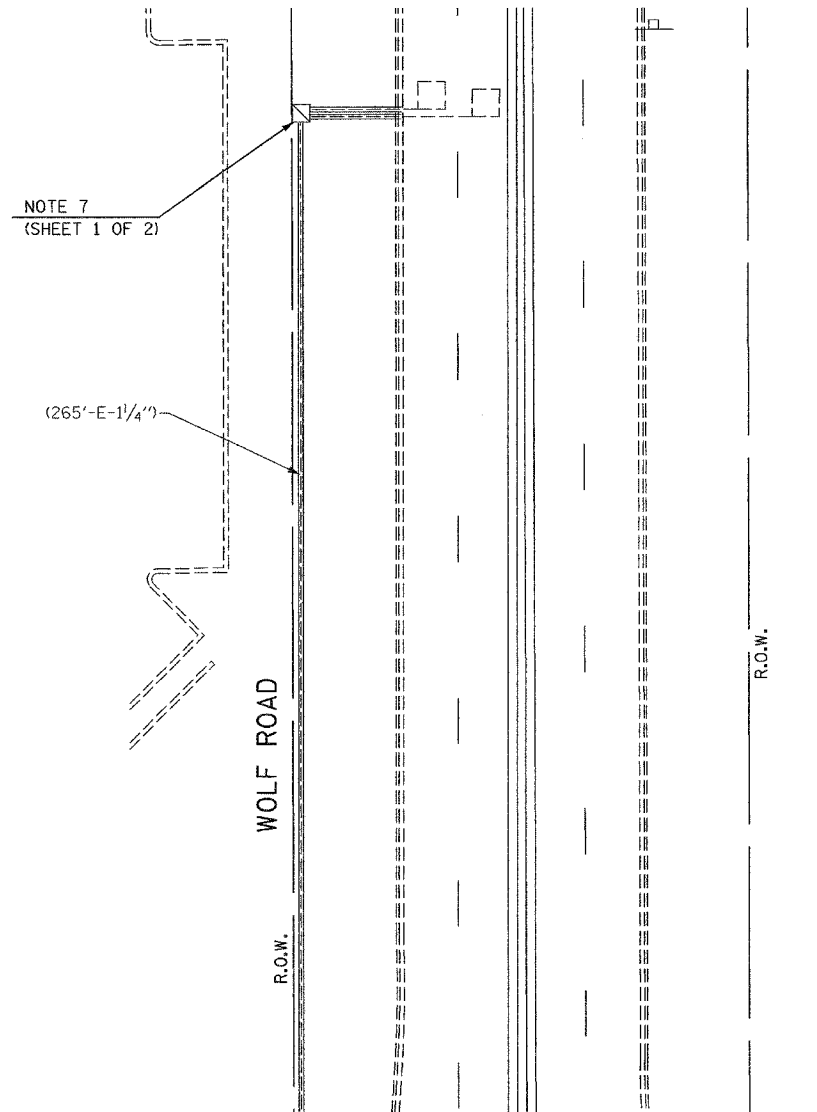
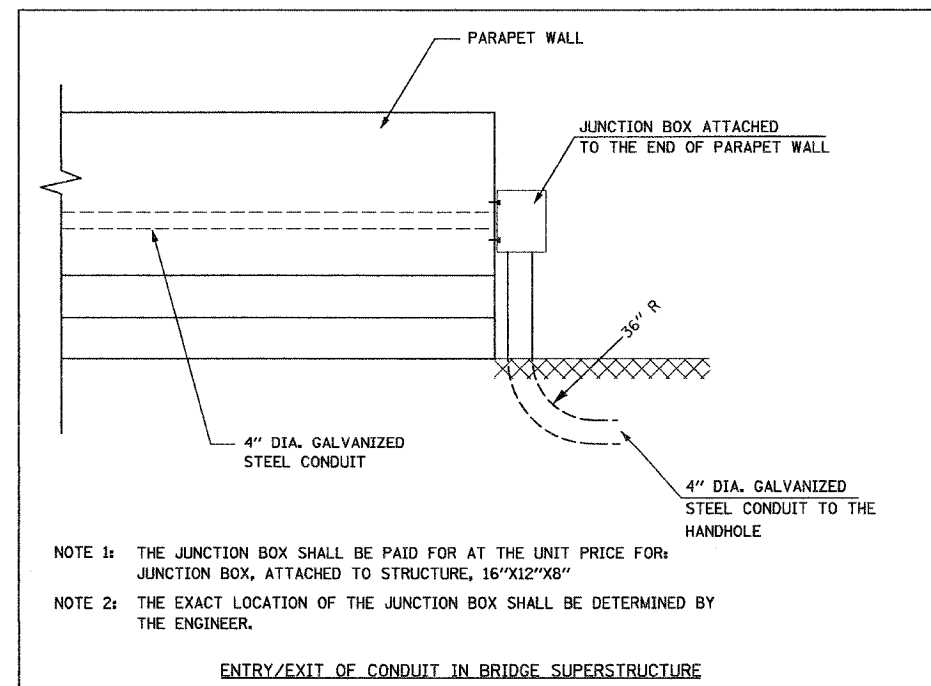


RTE.	SECTION	COUNTY	TOTAL SHEETS	SHEET NO.
305	2004-108 BR	38 COOK	72	38
STA.	TO STA.			
FED. ROAD DIST. NO.	ILLINOIS	FED. AID PROJECTS		
CONTRACT NO. 62853				



MATCH LINE A



**GA** GANDHI AND ASSOCIATES, INC.  
ENGINEERS AND PLANNERS  
6035 N. NORTHWEST HIGHWAY  
SUITE 306  
CHICAGO, ILLINOIS 60631 TEL. (773) 774-590

REVISIONS	
NAME	DATE

ILLINOIS DEPARTMENT OF TRANSPORTATION  
PALATINE ROAD: WISCONSIN CENTRAL RR TO  
US 45/ILL 21 (Milwaukee Ave.)  
EXISTING TRAFFIC SIGNAL PLAN MODIFICATION  
WOLF ROAD AT EAST AND WESTBOUND  
FRONTAGE ROADS TO AND FROM PALATINE ROAD  
SHEET 2 OF 2  
SCALE: 1"=20'  
DATE: 01/14/2005  
DRAWN BY: JF/BC  
DESIGNED BY: PKG/RRM  
CHECKED BY: PKG/RRM