

STATE OF ILLINOIS
DEPARTMENT OF TRANSPORTATION

ROUTE NO.	SECTION	COUNTY	SHEETS	POST	SHEET NO. 1
F.A.P. 305	*	COOK	72	47	7 SHEETS

*2004-108 BR Contract No. 62853

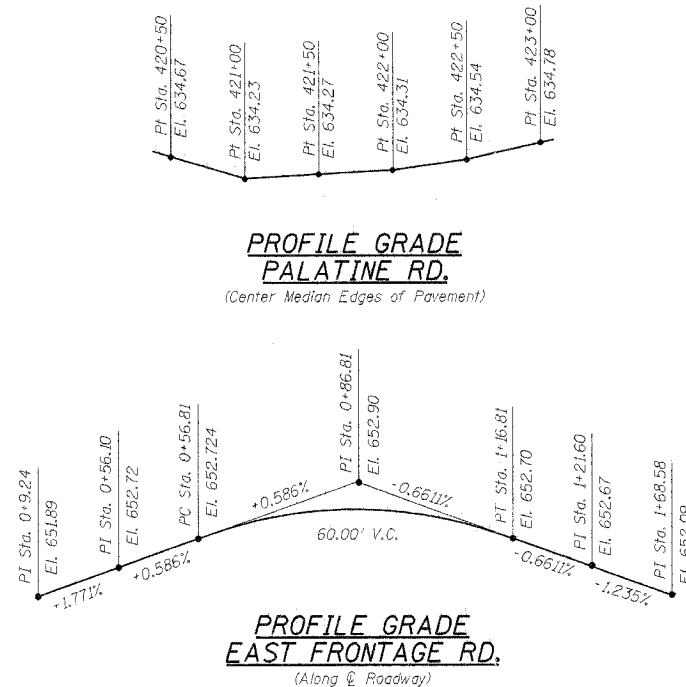
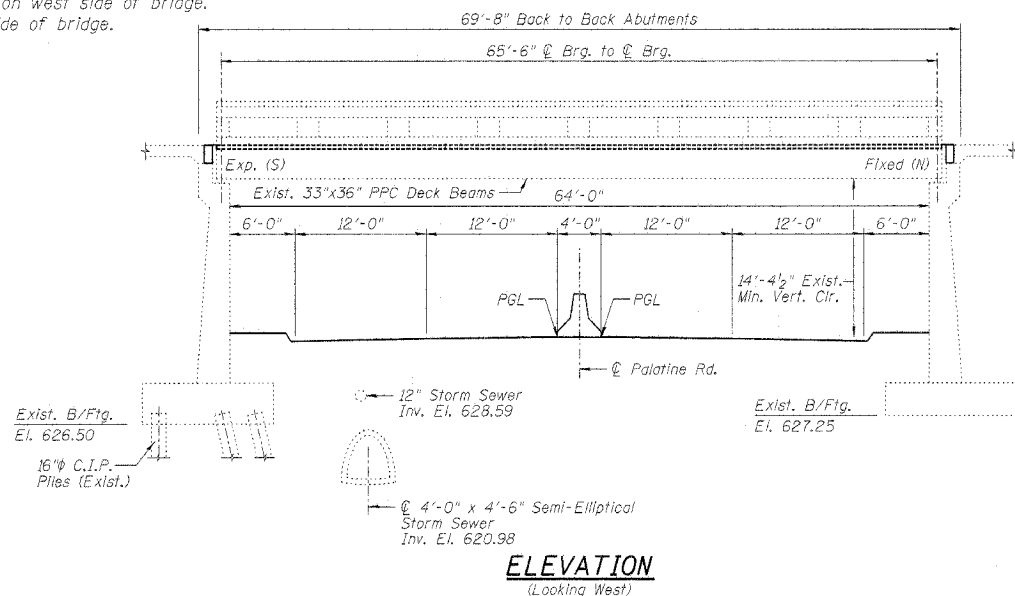
Benchmark: CCHD BM found in NW corner of the Frontage Road bridge over Palatine Road approximately 2000' east of Wheeling Road, Elev. 655.02

Existing Structure: Structure No. 016-2529 built as East Frontage Road over F.A.S. Route 116, Palatine Road Section 110-1415 in 1963. The superstructure consists of 33" x 36" PPC Deck Beams supporting a bituminous concrete wearing surface. The length of the structure is 65'-6" center to center of bearings. The existing deck width is 41'-0" out to out of deck. The deck is not skewed.

Construction Staging: The road shall be closed during construction.

Scope of Work:

1. Remove bituminous concrete wearing surface and waterproofing membrane system and place concrete wearing surface.
2. Replace existing concrete parapet on west side of bridge.
3. Install Steel Bridge Rail on east side of bridge.
4. Repair the concrete Deck Beams.
5. Reconstruct the expansion joints.
6. Repair the existing abutments.



GENERAL NOTES

1. Reinforcement bars shall conform to the requirements of AASHTO M-31 or M-322 Grade 60.
2. Plan dimensions and details relative to existing structure have been taken from existing plans and are subject to nominal construction variations. It shall be the Contractor's responsibility to verify such dimensions and details in the field and make necessary approved adjustments prior to construction or ordering of materials. Such variations shall not be cause for additional compensation for a change in the scope of the work; however, the Contractor will be paid for the quantity actually furnished at the unit price bid for the work.
3. Any reinforcement bars that are damaged during concrete removal shall be replaced with an approved bar splice or anchorage system. Cost included with "Concrete Removal".
4. All Construction Joints shall be bonded.
5. High Voltage Overhead Transmission Lines. Maintain 20 foot safety clearance with all equipment.

TOTAL BILL OF MATERIAL

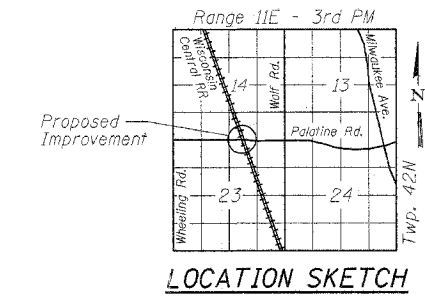
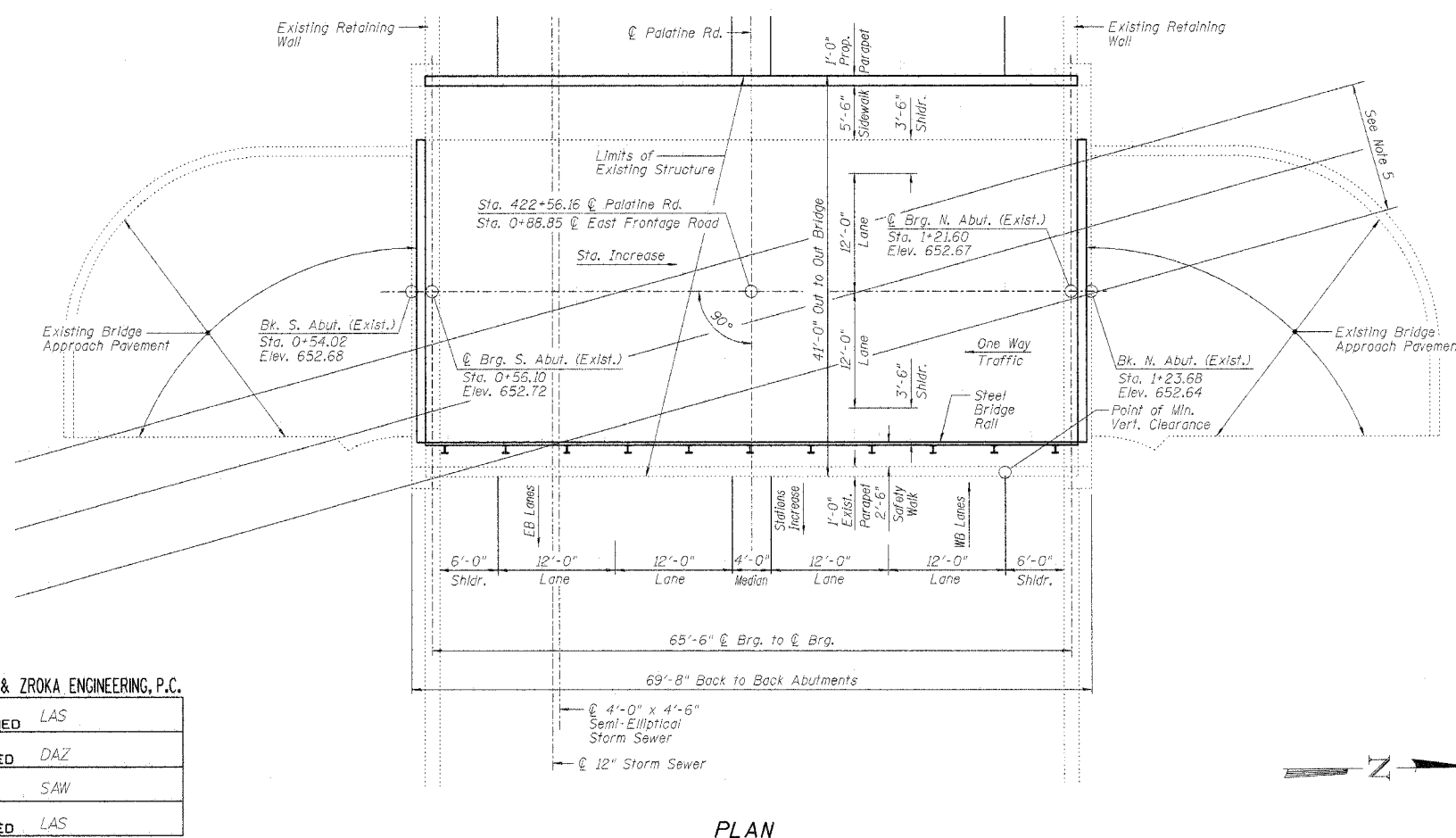
ITEM	UNIT	QUANTITY
Bituminous Concrete Surface Removal Complete	Sq Yd	230
Concrete Removal	Cu Yd	6.3
Preformed Joint Seal 1 1/2"	Foot	31
Preformed Joint Seal 2 1/2"	Foot	31
Concrete Superstructure	Cu Yd	9.8
Bridge Deck Grooving	Sq Yd	215
Protective Coat	Sq Yd	255
Formed Concrete Repair (Depth Equal to or Less Than 5')	Sq Ft	100
Reinforcement Bars, Epoxy Coated	Pound	3,890
Pedestrian Railing	Foot	65
Steel Bridge Rail	Foot	66
Epoxy Crack Sealing	Foot	130
Concrete Wearing Surface	Sq Yd	230
Bridge Sidewalk Repair (Full Depth)	Sq Ft	27
Keyway Repair	Foot	73
Bearing Pad Adjustment	Each	26
Furnishing and Erecting Structural Steel	Pound	1,631
Bridge Handrail Removal	Foot	66
Formed Concrete Repair (Depth Larger Than 5')	Sq. Ft.	25

LOADING HS20-44

DESIGN SPECIFICATIONS
1996 AASHTO w/1997 & 1998 Interims

DESIGN STRESSES

FIELD UNITS
f_c = 3,500 psi
f_y = 60,000 psi (reinforcement)



STATE OF ILLINOIS
DEBORAH A. ZROKA
081-005152
LICENSED STRUCTURAL ENGINEER

Signature: *Deborah A. Zroka* Date: 02-04-05
Expires: 11-30-2006

GENERAL PLAN & ELEVATION
EAST FRONTAGE ROAD OVER PALATINE ROAD
FAP 305/PALATINE ROAD
SECTION 2004-108 BR
COOK COUNTY
STA. 0+88.85
STRUCTURE NO. 016-2529

BRANCO & ZROKA ENGINEERING, P.C.

DESIGNED	LAS
CHECKED	DAZ
DRAWN	SAW
CHECKED	LAS

February 2005

PLAN