

F.A.I. RTE.	SECTION	COUNTY	TOTAL SHEETS	SHEET NO.
290	2004-120BR	COOK	21	1

STATE OF ILLINOIS
DEPARTMENT OF TRANSPORTATION
DIVISION OF HIGHWAYS

**PROPOSED
HIGHWAY PLANS**

F.A.I. ROUTE 290: I-290/L 53
SECTION: 2004-120BR

* OVER I-90 (TOLL), IL. RTE 58 (GOLF RD) AND WOODFIELD DR
BRIDGE REPAIR-DECK PATCHING

**COOK COUNTY
C-91-079-05**



FOR INDEX OF SHEETS, SEE SHEET NO. 2

THE IMPROVEMENT IS LOCATED IN THE VILLAGES OF SCHAUMBURG AND ROLLING MEADOWS



* **IMPROVEMENT LOCATIONS**

- 1) LOCATION 1
OVER I-90 (TOLLWAY) (SN 016-0977)
- 2) LOCATION 2
OVER IL-58 (GOLF RD) (SN 016-0980)
- 3) LOCATION 3
I-290 (SB) OVER WOODFIELD DR (SN 016-0978)

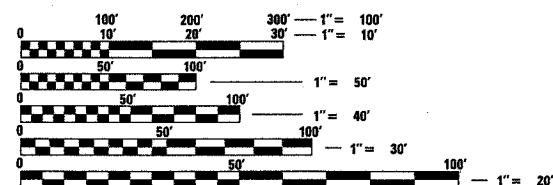
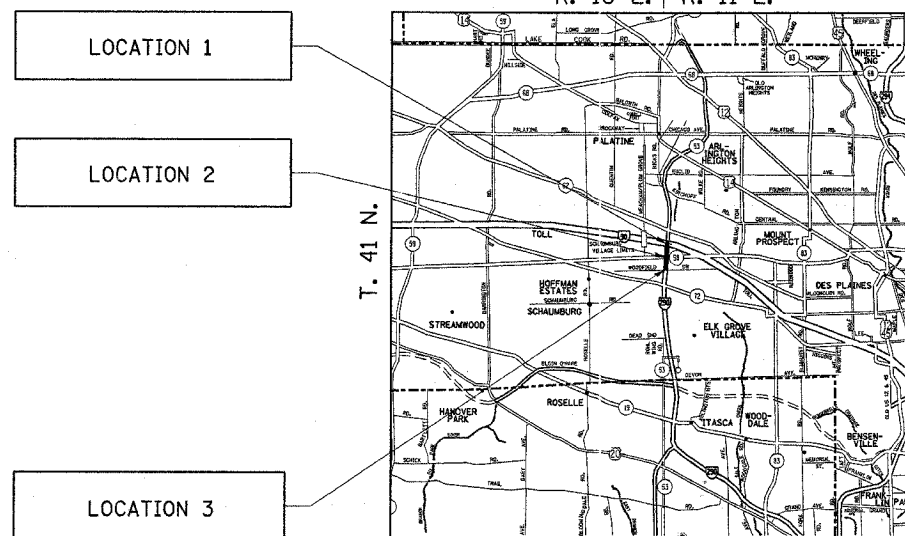
TRAFFIC DATA

I-290 ADT (2002) = 184,300
POSTED SPEED LIMIT = 55 MPH

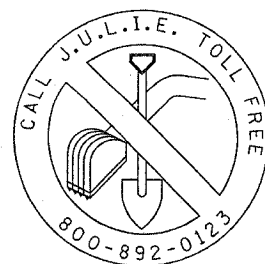
I-90 ADT (2002) = 144,600
POSTED SPEED LIMIT = 55 MPH

IL 58 (GOLF RD) ADT (2004) = 56,500
POSTED SPEED LIMIT = 40 MPH

WOODFIELD DR ADT (2003) = 5,009
POSTED SPEED LIMIT = 35 MPH



FULL SIZE PLANS HAVE BEEN PREPARED USING STANDARD ENGINEERING SCALES. REDUCED SIZED PLANS WILL NOT CONFORM TO STANDARD SCALES. IN MAKING MEASUREMENTS ON REDUCED PLANS, THE ABOVE SCALES MAY BE USED.



CONTRACT NO. 62889

DISTRICT ONE DESIGN PLAN PREPARATION ENGINEER:
KEN ENG/ROBERT BORO (847) 705-4178

STATE OF ILLINOIS
DEPARTMENT OF TRANSPORTATION
DIVISION OF HIGHWAYS

SUBMITTED March 4, 20 05

Dina O'Keefe
DEPUTY DIRECTOR OF HIGHWAYS, REGION ENGINEER

March 25, 20 05

Mike June
ENGINEER OF DESIGN AND ENVIRONMENT

March 25, 20 05

Victor Maden
DIRECTOR OF HIGHWAYS, CHIEF ENGINEER

**PRINTED BY THE AUTHORITY
OF THE STATE OF ILLINOIS**

F.A.I. RTE.	SECTION	COUNTY	TOTAL SHEETS	SHEET NO.
290	2004-120 BR	COOK	21	2
STA.		TO STA.		
FED. ROAD DIST. NO. 1		ILLINOIS	FED. AID PROJECT	

CONTRACT NO. 62889

INDEX OF SHEETS

<u>SHEET NUMBER</u>	<u>DESCRIPTION</u>
1	TITLE SHEET
2	INDEX OF SHEETS AND STATE STANDARDS
3	SUMMARY OF QUANTITIES
4	GENERAL NOTES
5-6	LOCATION 1 - FAI 290 OVER FAI 90 SN 016-0977
7-8	LOCATION 2 - FAI 290 OVER IL RTE 58 SN 016-0980
9-10	LOCATION 3- SAI 290 OVER WOODFIELD DR SN 016-0978
11	PERMANENT PROTECTIVE SHIELD DETAILS
12	TRAFFIC CONTROL DETAILS FOR FREEWAY SHOULDER CLOSURES, PARTIAL RAMP CLOSURES
13	ENTRANCE AND EXIT RAMP CLOSURE DETAILS
14-15	MULTI-LANE FREEWAY PAVEMENT MARKING DETAILS
16	ENTRANCE & EXIT RAMP TRAFFIC DETAILS
<u>ILLINOIS STATE TOLL HIGHWAY AUTHORITY STANDARDS</u>	
17	SD 04-10A STANDARD PROTECTIVE DEVICES
18	SD 04-11C CONSTRUCTION SIGNS III
19-20	SD 04-20 A STANDARD LANE CLOSURE DETAILS
21	SD 04-20 B TEMPORARY GORE STRIPING AND SHOULDER CLOSURE DETAILS

LIST OF STATE STANDARDS

<u>STANDARD</u>	<u>DESCRIPTION</u>
701101-01	OFF ROAD OPERATION, MULTILANE, LESS THAN 15' AWAY, FOR SPEED >= 45 MPH
701400-02	APPROACH TO LANE CLOSURE, FREEWAY/EXPRESSWAY
701401-03	LANE CLOSURE, MULTILANE FOR SPEED > 45 MPH
701446	TWO LANE CLOSURE, EXPRESSWAY
701411-03	LANE CLOSURE, MULTILANE, AT ENTRANCE OR EXIT RAMP, FOR SPEED >= 45 MPH
702001-05	TRAFFIC CONTROL DEVICES
701601-04	URBAN LANE CLOSURE, MULTILANE 1W OR 2W WITH NONTRAVERSABLE MEDIAN
701602-02	URBAN LANE CLOSURE, MULTILANE 2W WITH BIDIRECTIONAL LEFT TURN LANE
701606-04	URBAN LANE CLOSURE, MULTILANE 2W WITH MOUNTABLE MEDIAN
701801-03	SIDEWALK CLOSURE

REVISIONS		ILLINOIS DEPARTMENT OF TRANSPORTATION
NAME	DATE	
		FAI 290/IL 53 INDEX OF SHEETS STATE STANDARDS
SCALE:	VERT.	DRAWN BY SHB
DATE 3/4/2005	HORIZ.	

F.A.I. RTE.	SECTION	COUNTY	TOTAL SHEETS	SHEET NO.
290	2004-120 BR	COOK	21	3
STA.		TO STA.		
FED. ROAD DIST. NO.	ILLINOIS	FED. AID PROJECT		

GENERAL NOTES

BEFORE STARTING ANY EXCAVAION, THE CONTRACTOR SHALL CALL "J.U.L.I.E." AT (800) 892-0123 FOR FIELD LOCATIONS OF BURIED ELCTRIC, TELEPHONE AND GAS UTILITIES. 48 HOUR NOTIFICATION PRIOR TO START OF WORK IS REQUIRED.

DO NOT SCALE PLANS FOR CONSTRUCTION DIMENSIONS.

THE CONTRACTOR WILL NOT BE ALLOWED TO SET UP A YARD OR FIELD OFFICE ON STATE PROPERTY WITHOUT WRITTEN PERMISSION FROM THE DEPARTMENT.

THE CONTRACTOR SHALL CONTACT THE DISTRICT ONE TRAFFIC CONTROL SUPERVISOR AT (847) 705-4151 OR 4155 FOR EXPRESSWAYS, (847) 705-4470 FOR ARTERIALS AND (630) 241-6800 EXT. 3822 FOR ILLINOIS STATE TOLL HIGHWAY AUTHORITY (ISTHA) A MINIMUM OF 72 HOURS IN ADVANCE OF BEGINNING OF WORK.

THE CONTRACTOR SHALL BE AWARE THAT SOME LOCATIONS HAVE UTILITY CONDUITS. ANY DAMAGE TO THE CONDUITS CAUSED BY THE CONTRACTOR'S OPERATIONS SHALL BE REPLACED OR REPAIRED BY THE CONTRACTOR AT THEIR EXPENSE. THE CONTRACTOR SHALL ADJUST THE PROTECTIVE SHIELDING TO FIT AROUND THE CONDUITS. DETAILS SHALL BE APPROVED BY THE ENGINEER BEFORE INSTALLATION. THE CONTRACTOR SHALL COORDINATE CONSTRUCTION ACTIVITIES WITH TILITY COMPANIES.

PLAN DIMENSIONS AND DETAILS RELATIVE TO EXISTING STRUCTURES HAVE BEEN TAKEN FROM EXISTING PLANS AND ARE SUBJECT TO NOMINAL CONSTRUCTION VARIATIONS. IT SHALL BE THE CONTRACTOR'S RESPONSIBILITY TO VERIFY SUCH DIMENSIONS AND DETAILS IN THE FIELD AND MAKE NECESSARY APPROVED ADJUSTMENTS PRIOR TO CONSTRUCTION OR ORDERING OF MATERIALS. SUCH VARIATIONS SHALL NOT CAUSE FOR ADDITIONAL COMPENSATION FOR A CHANGE IN THE SCOPE OF THE WORK. HOWEVER THE CONTRACTOR WILL BE PAID FOR THE QUANTITY ACTURALLY FURNISHED AT THE UNIT PRICE BID FOR THE WORK.

WHEN ARTIFICIAL LIGHTING IS UTILIZED IN NIGHT OPERATIONS, THE CONTRACTOR SHALL EXERCISE THE UTMOST PRECAUTIONS IN PREVENTING ADVERSE VISIBILITY TO THE MOTORING PUBLIC AND ADJOINING RESIDENTIAL AREAS.

THE CONTRACTOR SHALL ADJUST THE PROTECTIVE SHIELDING TO RIDE ABOVE THE EXISTING LIGHTING FIXTURES IN ORDER TO MAINTAIN THE EXISTING LEVEL OF LIGHTING OF THE ROADWAY UNDERNEATH. DETAILS SHALL BE APPROVED BY THE ENGINEER BEFORE INSTALLATION.

ALL DAMAGE TO EXISTING PAVEMENT MARKINGS OR RAISED REFLECTIVE PAVEMENT MARKERS OUSIDE THE REMOVAL LINE SHOWN ON THE PLANS SHALL BE REPLACED AT THE CONTRACTOR'S EXPENSE.

THESE PLANS HAVE BEEN PREPARED FROM NOTES RECEIVED FROM BRIDGE INSPECTORS.

THE "ADVANCED WARNING SIGN DETAIL FOR ARTERIAL TRAFFIC" LOCATED IN THE SPECIAL PROVISIONS FOR "TEMPORARY INFORMATION SIGNING FOR LANE CLOSURES" AND THE SPECIAL PROVISION FOR "PUBLIC CONVENIENCE AND SAFETY" ARE APPLICABLE ONLY TO ARTERIAL ROADS AND SHALL NOT BE APPLIED TO EXPRESSWAYS.

REVISIONS	
NAME	DATE

ILLINOIS DEPARTMENT OF TRANSPORTATION

GENERAL NOTES

SCALE: VERT.
HORIZ.
DATE

DRAWN BY
CHECKED BY

Rev.

SUMMARY OF QUANTITIES			URBAN TOTAL QUANTITIES	CONSTRUCTION TYPE CODE					
CODE NO	ITEM	UNIT		LOCATION 1 SN 016-0977 SFTY-2A	LOCATION 2 SN 016-0980 SFTY-2A	LOCATION 3 SN 016-0978 SFTY-2A			
67000400	ENGINEER'S FIELD OFFICE, TYPE A	CAL MO	2	0.8	0.6	0.6			
67100100	MOBILIZATION	L SUM	1	0.4	0.3	0.3			
70102640	TRAFFIC CONTROL AND PROTECTION, STANDARD 701801	L SUM	1		0.5	0.5			
* 78008220	POLYUREA PAVEMENT MARKING TYPE I - LINE 5"	FOOT	300	100	100	100			
X0322066	PROTECTIVE SHIELD (PERMANENT)	SQ YD	1149	1149					
X0322467	TEMPORARY INFORMATION SIGNING FOR LANE CLOSURE	SQ FT	96		48	48			
X7011015	TRAFFIC CONTROL AND PROTECTION (EXPRESSWAYS)	L SUM	1	0.4	0.3	0.3			
X7012625	TRAFFIC CONTROL AND PROTECTION, STANDARD 701606	EACH	1			1			
X7012630	TRAFFIC CONTROL AND PROTECTION, STANDARD 701601	EACH	1		1				
X7015000	CHANGEABLE MESSAGE SIGN	CAL MO	3	1	1	1			
Z0016004	DECK SLAB REPAIR (FULL DEPTH, TYPE II) (SPECIAL)	SQ YD	67	36	31				
Z0016202	DECK SLAB REPAIR (PARTIAL)(SPECIAL)	SQ YD	166	21	118	27			
Z0047300	PROTECTIVE SHIELD	SQ YD	6180	3382	2235	563			
<i>* SPECIALTY ITEMS</i>									

SUMMARY OF QUANTITIES				CONSTRUCTION TYPE CODE					
CODE NO	ITEM	UNIT	TOTAL QUANTITIES						

3/1/2005 10:00:00 AM

REVISIONS	
NAME	DATE

F.A.I. RTE.	SECTION	COUNTY	TOTAL SHEETS	SHEET NO.
290	2004-120-BR	COOK	21	5
STA.		TO STA.		
FED. ROAD DIST. NO.		ILLINOIS FED. AID PROJECT		

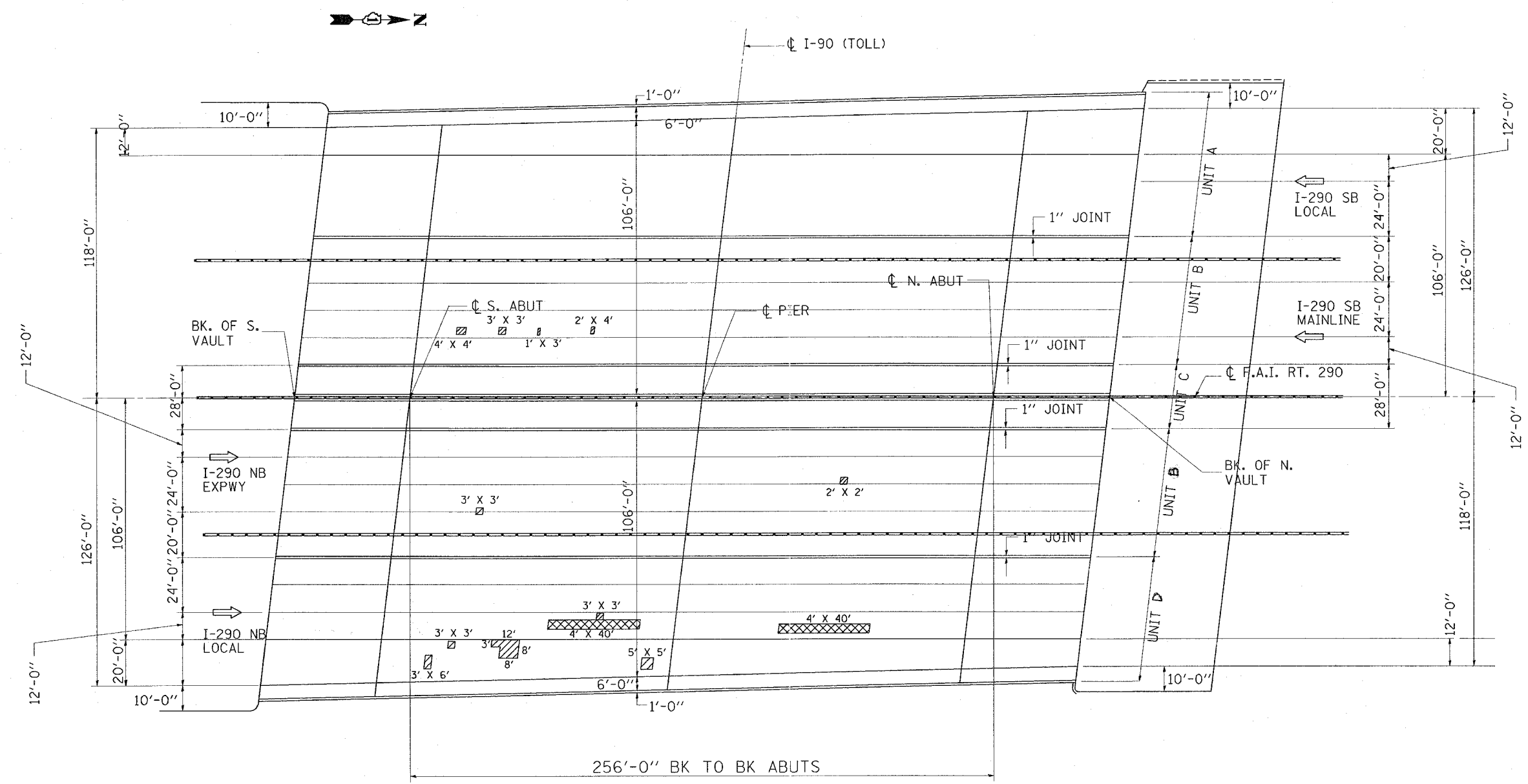
SHEET 1 OF 2, LOCATION 1

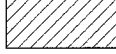

BILL OF MATERIAL

DECK SLAB REPAIR (PARTIAL)-(SPECIAL)	SY	21
DECK SLAB REPAIR (FD, TYI)-(SPECIAL)	SY	36
PROTECTIVE SHIELD	SY	3382
PROTECTIVE SHIELD (PERMANENT)	SY	1149

NOTE: ACTUAL LOCATIONS OF PATCHES ARE TO BE SHOWN ON PLANS BY THE ENGINEER FOR AS-BUILTS

DATE OF SURVEY: DEC. 2004



 PARTIAL DEPTH PATCHING
 FULL DEPTH PATCHING

REVISIONS	
NAME	DATE

ILLINOIS DEPARTMENT OF TRANSPORTATION
LOCATION 1
 INTERSTATE ROUTE 290
 OVER INTERSTATE ROUTE 90
 PATCHING LOCATIONS
 S.N. 016-0977

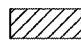
SCALE: VERT. / HORIZ. / DATE: 2/01/05

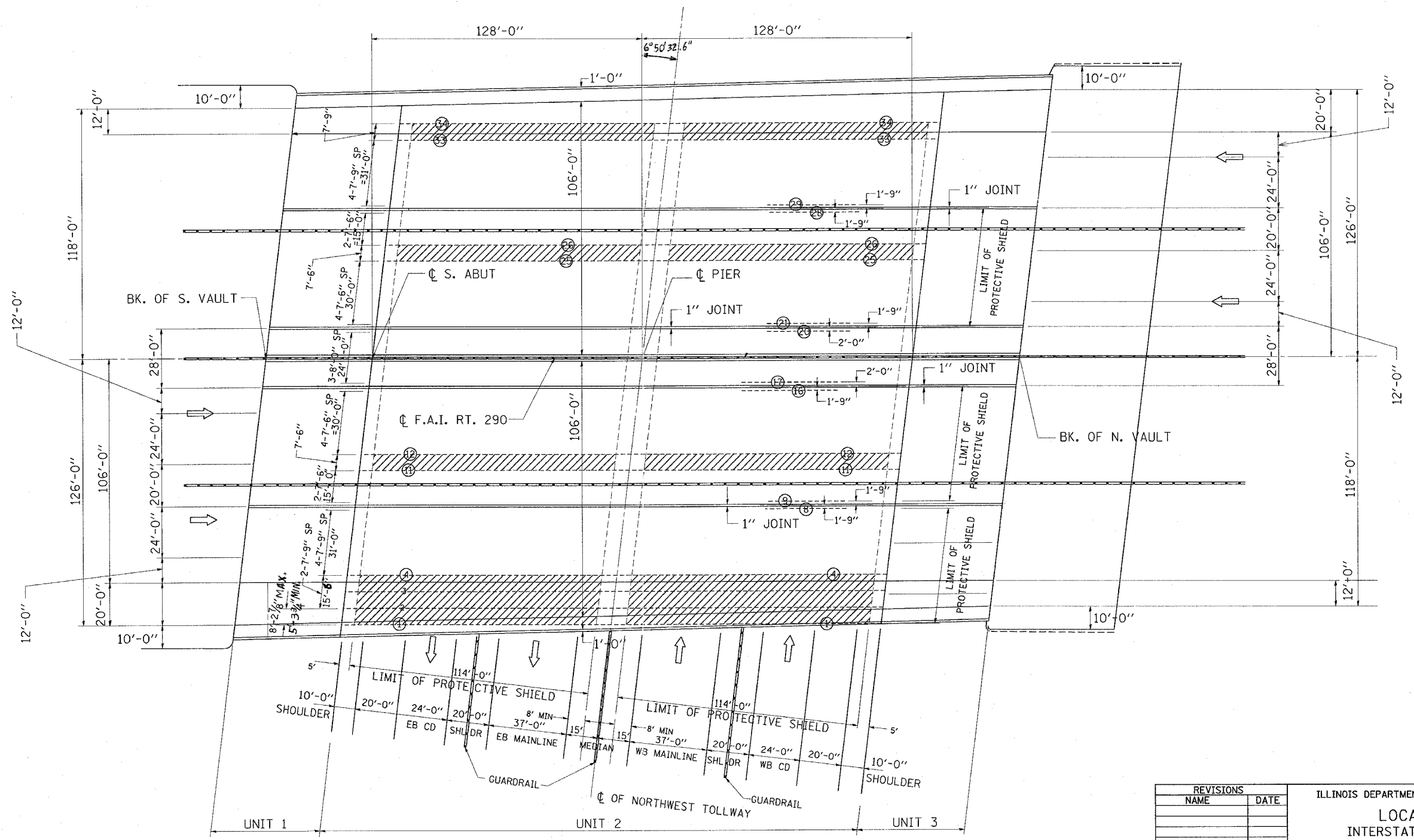
DRAWN BY SHB
 CHECKED BY

PLOT DATE = 01/20/05
 PLOT SCALE = 1" = 20'-0"
 REFERENCE = #REF#

F.A.I. RTE.	SECTION	COUNTY	TOTAL SHEETS	SHEET NO.
290	2004-120-BR	COOK	21	6
STA.		TO STA.		
FED. ROAD DIST. NO.		ILLINOIS FED. AID PROJECT		

SHEET 2 OF 2, LOCATION 1

 LIMIT OF PERMANENT PROTECTIVE SHIELD
 PROVIDE PERMANENT PROTECTIVE SHIELDING BETWEEN BEAM NO. 1-4, 11-12, 25-26 AND 33-34 IN STEEL GIRDER SPANS ONLY



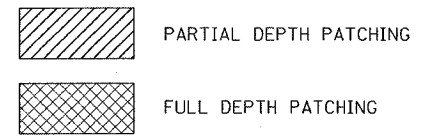
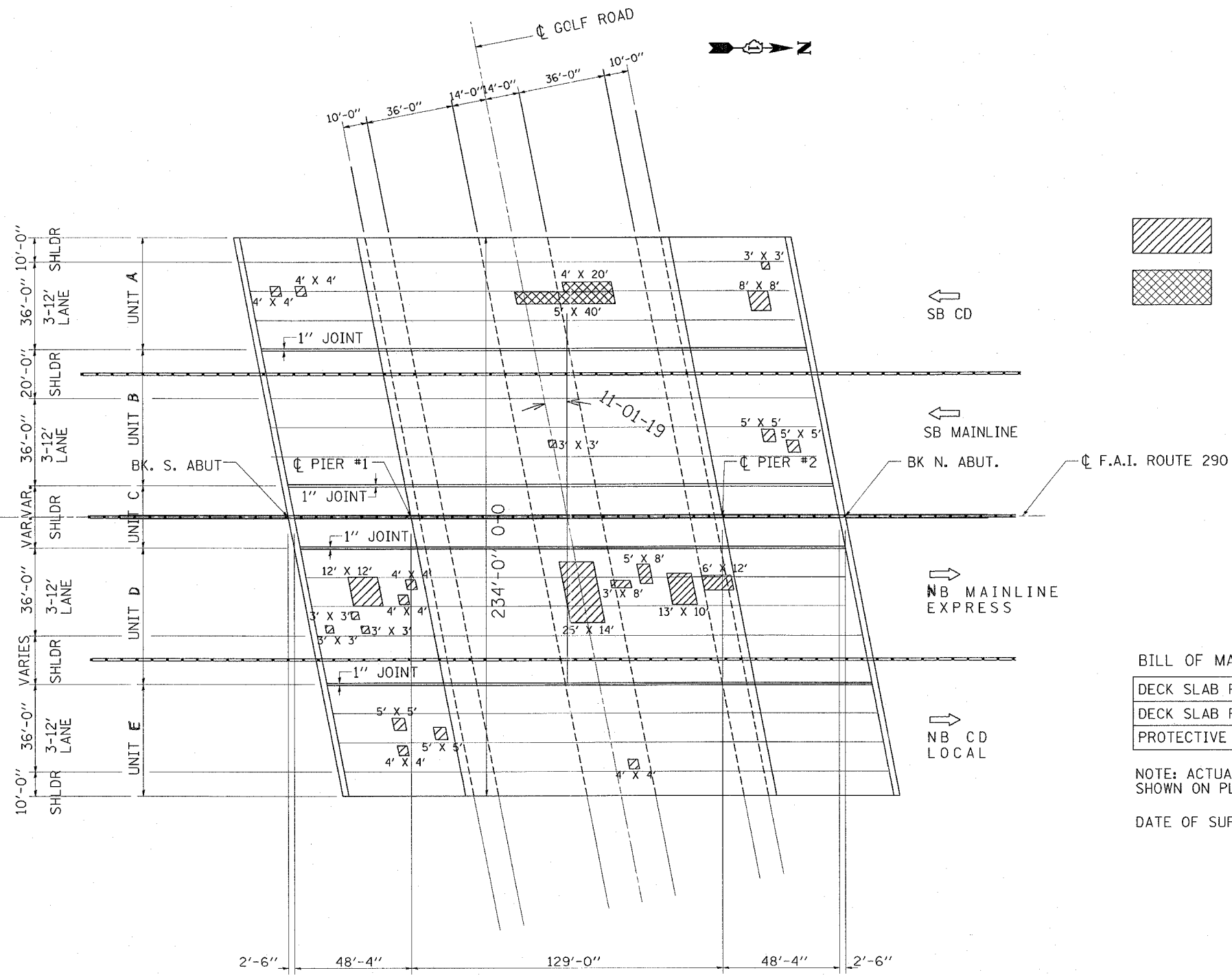
PLOT DATE = 3/4/2005
 PLOT SCALE = 50.0000 / IN.
 REFERENCE = REF#

REVISIONS	
NAME	DATE

ILLINOIS DEPARTMENT OF TRANSPORTATION
LOCATION 1
 INTERSTATE ROUTE 290
 OVER INTERSTATE ROUTE 90
 PROTECTIVE SHIELD DETAILS
 S.N. 016-0977
 SCALE: VERT. / HORIZ. / DATE 2/01/05
 DRAWN BY SHB / CHECKED BY

F.A.I. RTE.	SECTION	COUNTY	TOTAL SHEETS	SHEET NO.
290	2004-120-BR	COOK	21	7
STA.		TO STA.		
FED. ROAD DIST. NO.	ILLINOIS	FED. AID PROJECT		

SHEET 1 OF 2, LOCATION 2



BILL OF MATERIAL

DECK SLAB REPAIR (PARTIAL)-(SPECIAL)	SY	118
DECK SLAB REPAIR (FD, TY II)-(SPECIAL)	SY	31
PROTECTIVE SHIELD	SY	2235

NOTE: ACTUAL LOCATIONS OF PATCHES ARE TO BE SHOWN ON PLANS BY THE ENGINEER FOR AS-BUILTS

DATE OF SURVEY - DEC. 2004

PLOT DATE = 04/20/05
 FILE NAME = 50430000 / IN.
 PLOT SCALE = 50430000 / IN.
 REFERENCE = REF#

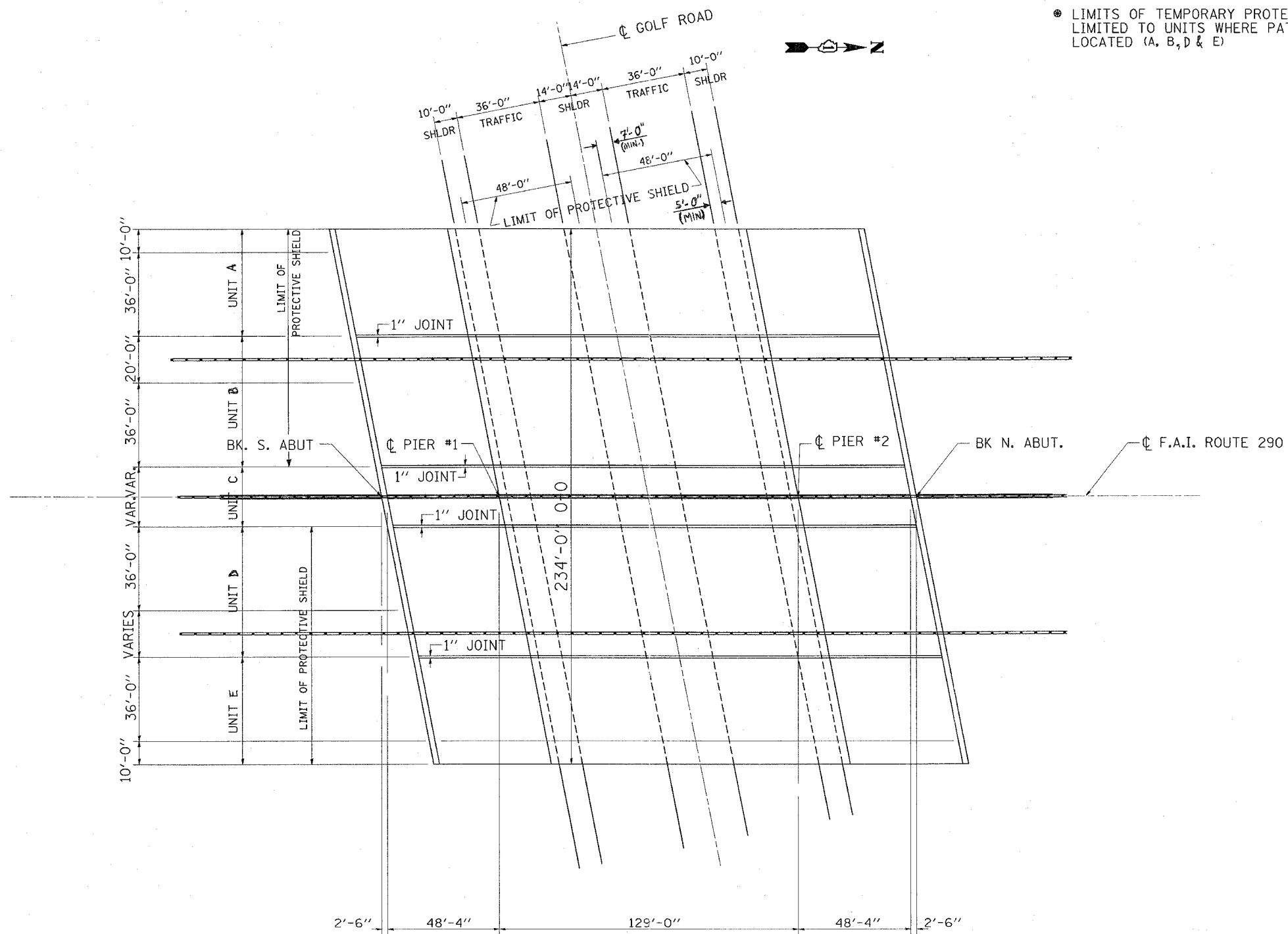
REVISIONS		ILLINOIS DEPARTMENT OF TRANSPORTATION LOCATION 2 OVER IL ROUTE 58 (GOLF ROAD) PATCHING LOCATIONS S.N. 016-0980
NAME	DATE	

SCALE: VERT. / HORIZ.
 DATE 2/01/05
 DRAWN BY SHB
 CHECKED BY

F.A.I. RTE.	SECTION	COUNTY	TOTAL SHEETS	SHEET NO.
290	2004-120-BR	COOK	21	8
STA.		TO STA.		
FED. ROAD DIST. NO.	ILLINOIS	FED. AID PROJECT		

SHEET 2 OF 2, LOCATION 2

● LIMITS OF TEMPORARY PROTECTIVE SHIELDS LIMITED TO UNITS WHERE PATCHES ARE LOCATED (A, B, D & E)



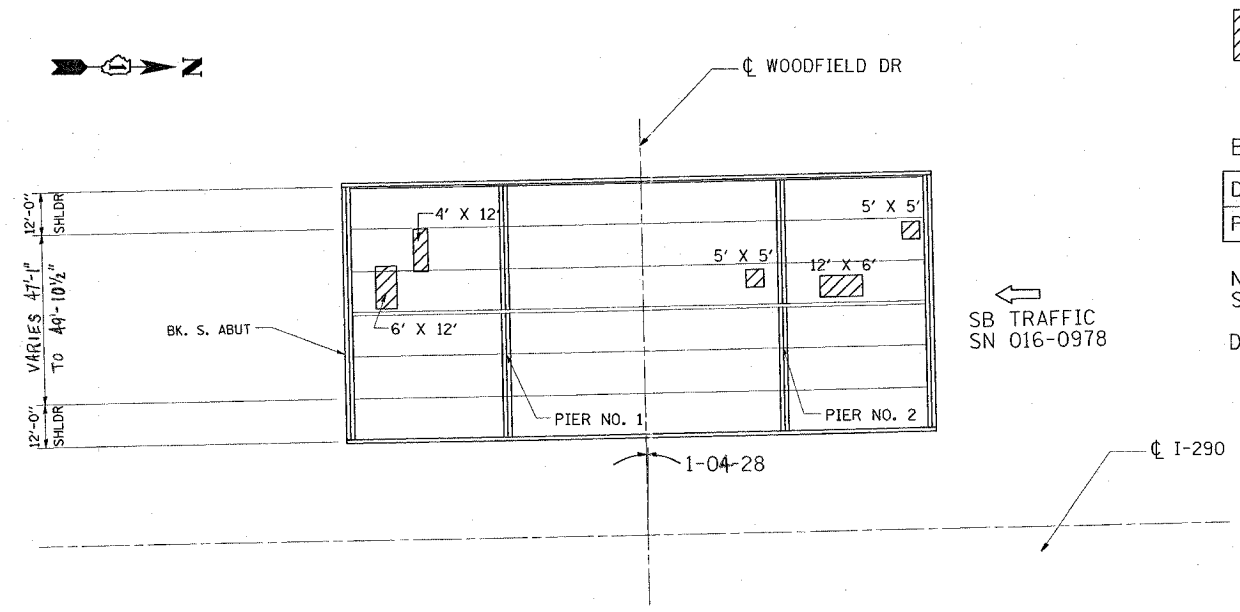
PLOT DATE = 01/20/05
 FILE NAME = 1111111111
 PLOT SCALE = 50:0000 / 1 IN.
 REFERENCE = REF#

REVISIONS	
NAME	DATE

ILLINOIS DEPARTMENT OF TRANSPORTATION
LOCATION 2
 INTERSTATE ROUTE 290
 OVER IL ROUTE 58 (GOLF ROAD)
 PROTECTIVE SHIELD DETAILS
 S.N. 016-0980
 SCALE: VERT. _____
 HORIZ. _____
 DATE 2/01/05
 DRAWN BY SHB
 CHECKED BY _____

F.A.I. RTE.	SECTION	COUNTY	TOTAL SHEETS	SHEET NO.
290	2004-120-BR	COOK	21	9
STA.		TO STA.		
FED. ROAD DIST. NO.		ILLINOIS FED. AID PROJECT		

SHEET 1 OF 2, LOCATION 3



 DECK SLAB REPAIR (PARTIAL DEPTH) - (SPECIAL)

BILL OF MATERIAL

DECK SLAB REPAIR (PARTIAL) - (SPECIAL)	SY	27
PROTECTIVE SHIELD	SY	563

NOTE: ACTUAL LOCATIONS OF PATCHES ARE TO BE SHOWN ON PLANS BY THE ENGINEER FOR AS-BUILTS
DATE OF SURVEY - DEC. 2004

PLOT DATE = 3/4/2005
FILE NAME = RFILE8
PLOT SCALE = 50.0000 / IN.
REFERENCE = REF#

REVISIONS	
NAME	DATE

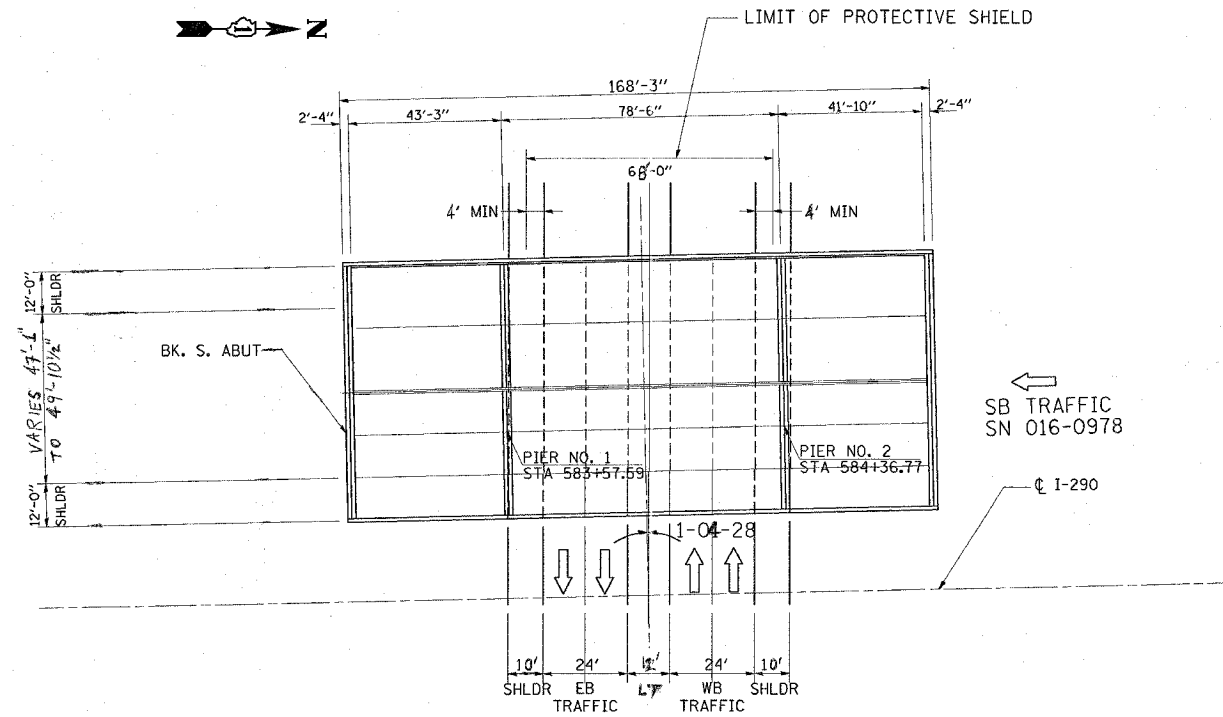
ILLINOIS DEPARTMENT OF TRANSPORTATION
LOCATION 3
INTERSTATE ROUTE 290
OVER WOODFIELD ROAD
PATCHING LOCATIONS
S.N. 016-0978 (SB)

SCALE: VERT. _____
HORIZ. _____
DATE: 2/01/05

DRAWN BY SHB
CHECKED BY _____

F.A.I. RTE.	SECTION	COUNTY	TOTAL SHEETS	SHEET NO.
290	2004-120-BR	COOK	21	10
STA.		TO STA.		
FED. ROAD DIST. NO.	ILLINOIS	FED. AID PROJECT		

SHEET 2 OF 2, LOCATION 3



PLOT DATE = 2/1/2005
 FILE NAME = SHIELD
 PLOT SCALE = 50.0000 / IN.
 REFERENCE = REF#

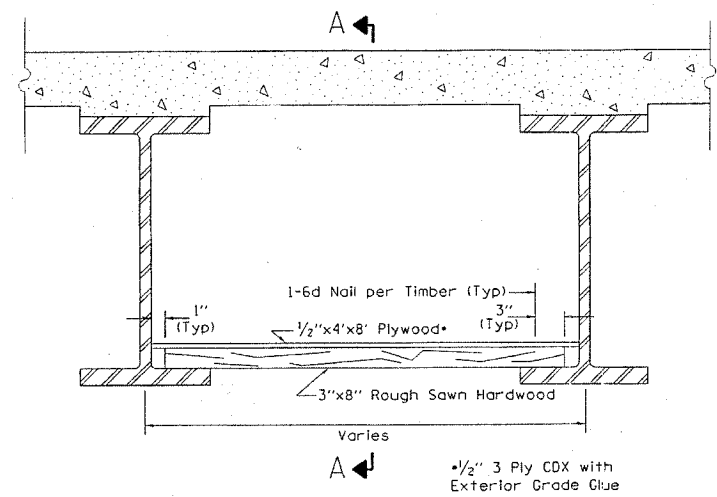
REVISIONS	
NAME	DATE

ILLINOIS DEPARTMENT OF TRANSPORTATION
 LOCATION 3
 INTERSTATE ROUTE 290
 OVER WOODFIELD ROAD
 PROTECTIVE SHIELD DETAILS
 S.N. 016-0978 (SB)

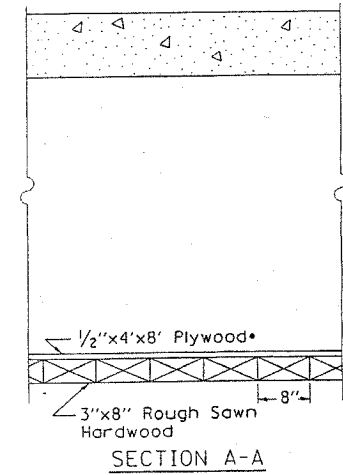
SCALE: VERT.
 HORIZ.
 DATE 2/01/05

DRAWN BY SHB
 CHECKED BY

F.A.I. RTE.	SECTION	COUNTY	TOTAL SHEETS	SHEET NO.
290	2004-120-BR	COOK	21	11
STA.		TO STA.		
FED. ROAD DIST. NO.		ILLINOIS	FED. AID PROJECT	



*1/2" 3 Ply CDX with Exterior Grade Glue



PLOT DATE = 2/1/2006
 PLOT NAME = 211172
 PLOT SCALE = 50.00000 / IN.
 REFERENCE = REF*

REVISIONS	
NAME	DATE

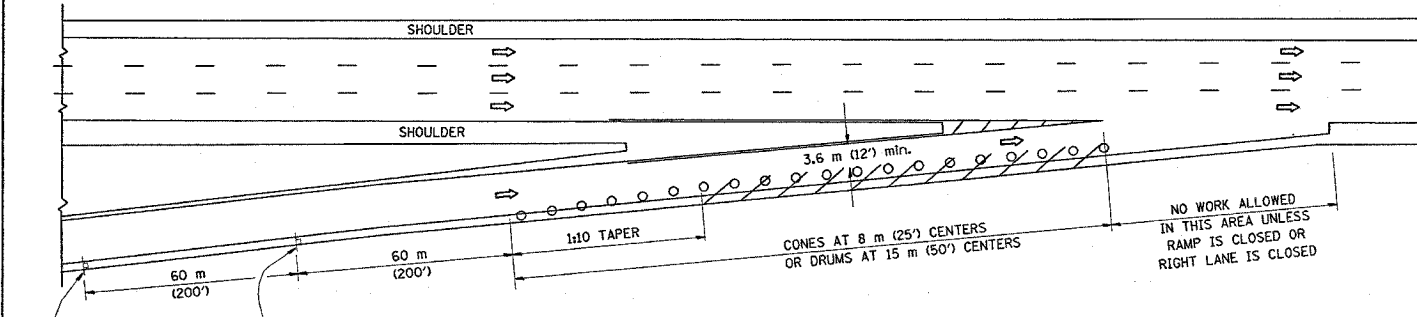
ILLINOIS DEPARTMENT OF TRANSPORTATION

PERMANENT PROTECTIVE SHIELD
 DETAILS

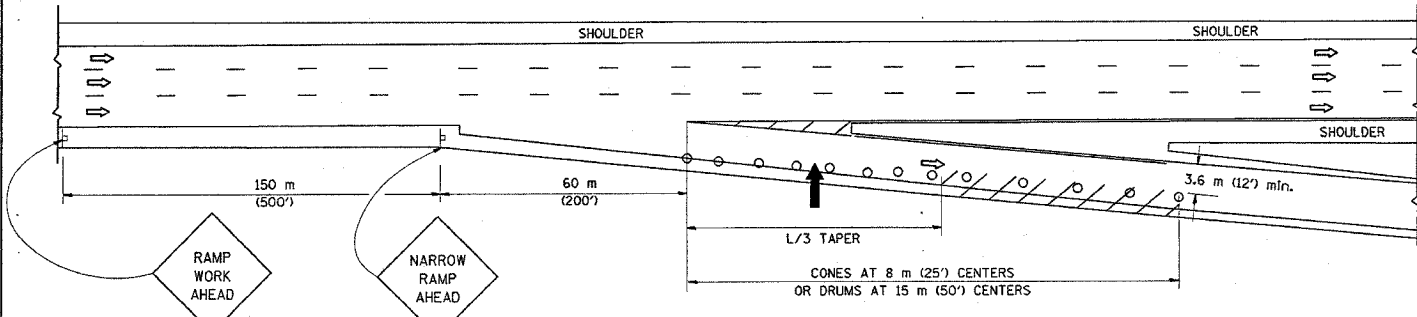
SCALE: VERT.
 HORIZ.
 DATE

DRAWN BY
 CHECKED BY

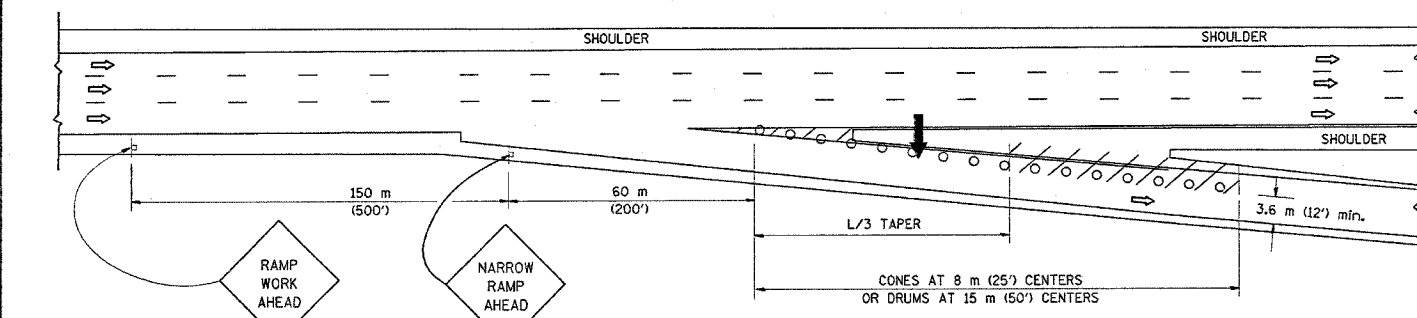
PARTIAL RAMP CLOSURE DETAILS



TYPICAL ENTRANCE RAMP



TYPICAL EXIT RAMP



TYPICAL EXIT RAMP

SYMBOLS

- ARROWBOARD
- WORK AREA
- SIGN ON PORTABLE OR PERMANENT SUPPORT
- FLAGGER WITH CONTROL SIGN
- DRUM WITH MONO-DIRECTIONAL STEADY BURNING LIGHT
- CONES - 700 (28) IN HEIGHT

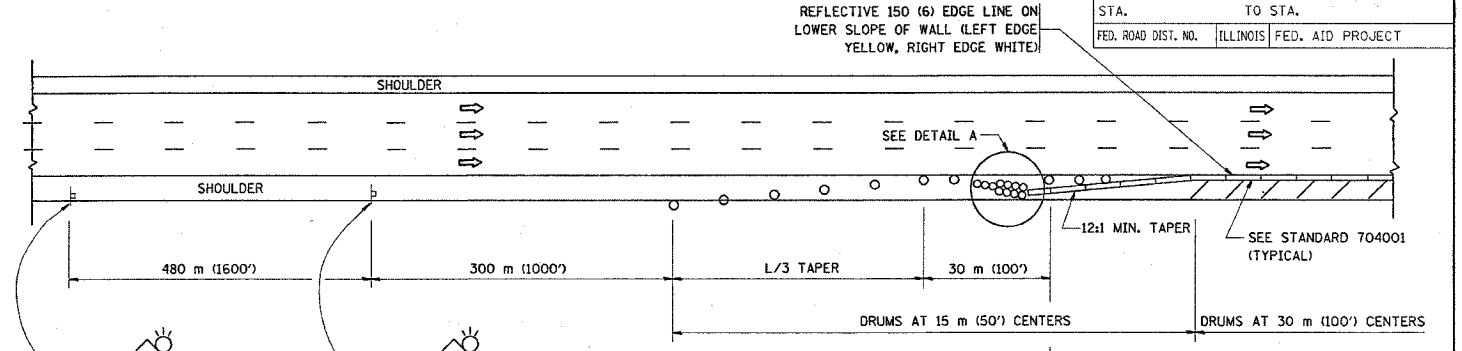
GENERAL NOTES

1. THE "L" DISTANCE EQUALS:

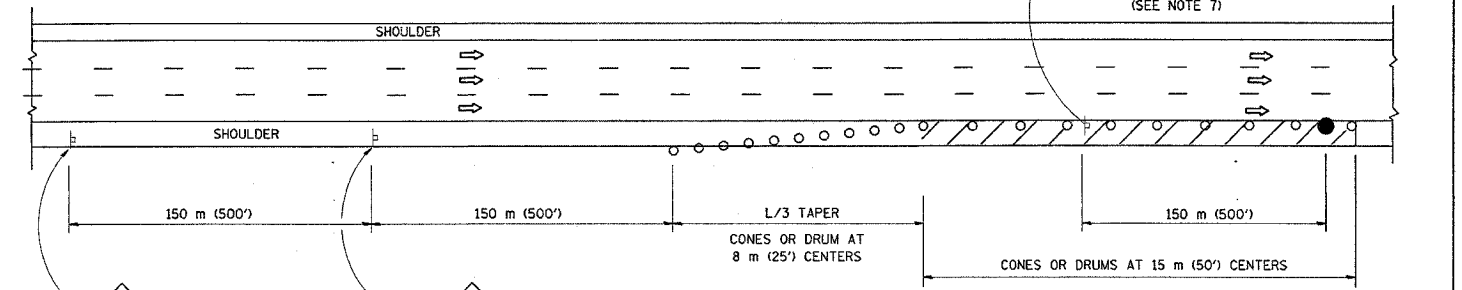
SPEED LIMIT	FORMULAS
80 Km/h (45 mph)	METRIC ENGLISH
OR GREATER:	$L=0.65(W)(S)$ $L=(W)(S)$

W = WIDTH OF OFFSET IN METERS (FEET)
 S = NORMAL POSTED SPEED KM/H (MPH)
2. PLASTIC DRUMS WITH HIGH PERFORMANCE REFLECTIVE SHEETING AND STEADY BURNING LIGHTS ARE REQUIRED FOR ALL NIGHTTIME CLOSURES.
3. ALL SIGNS SHALL BE POST MOUNTED IF THE CLOSURE TIME EXCEEDS FOUR DAYS.
4. FLASHING LIGHTS SHALL BE USED DURING THE HOURS OF DARKNESS AND SHALL BE INSTALLED ABOVE THE FIRST TWO SETS OF SIGNS.

SHOULDER CLOSURE DETAILS



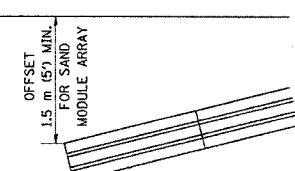
PERMANENT SHOULDER CLOSURE



DAYTIME SHOULDER CLOSURE

THIS DETAIL IS USED WHERE:
 1. VEHICLES, EQUIPMENT, WORKERS OR THEIR ACTIVITIES ENCR OACH IN AN AREA CLOSER THAN 4.5 m (15') TO THE EDGE OF PAVEMENT FOR A PERIOD IN EXCESS OF 15 MINUTES.

ARRAY DESIGN PER MANUFACTURER TO BE NCHRP 350 COMPLIANT FOR POSTED SPEED.



DETAIL "A"
 IMPACT ATTENUATOR, TEMPORARY
 (SEE NOTE 5)

5. THE IMPACT ATTENUATOR, TEMPORARY IS NOT REQUIRED WHEN THE TEMPORARY CONCRETE BARRIER WALL IS OUTSIDE THE CLEAR ZONE OR IS TIED INTO THE EXISTING GUARDRAIL. IF OFFSET IS LESS THAN 5 FEET USE "TRAFFIC BARRIER TERMINAL, TYPE III, TEMPORARY" DEVICE TO MEET NCHRP350 FOR POSTED SPEED.
6. AUTHORIZATION FROM THE DISTRICT'S BUREAU OF TRAFFIC IS REQUIRED FOR ALL FREEWAY CLOSURES.
7. THE FLAGGER AND FLAGGER SIGN ARE REQUIRED AT THE ABOVE WORK SITES WHEN:
 - a. FOUR OR MORE WORK VEHICLES ENTER THE TRAFFIC LANES IN A ONE HOUR PERIOD.
 - b. THE WORK AVTIVITY REQUIRES FREQUENT ENCR OACHMENT INTO THE LANE OPEN TO TRAFFIC.
 THE FLAGGER SHALL BE STATIONED APPROXIMATELY 30 m (100') TO 60 m (200') IN ADVANCE OF THE WORKERS.

ALL DIMENSIONS ARE IN MILLIMETERS (INCHES) UNLESS OTHERWISE SHOWN.
 ILLINOIS DEPARTMENT OF TRANSPORTATION

REVISIONS	
NAME	DATE
DWS	11/96
JAF	12/02
NCHRP 350	04/03

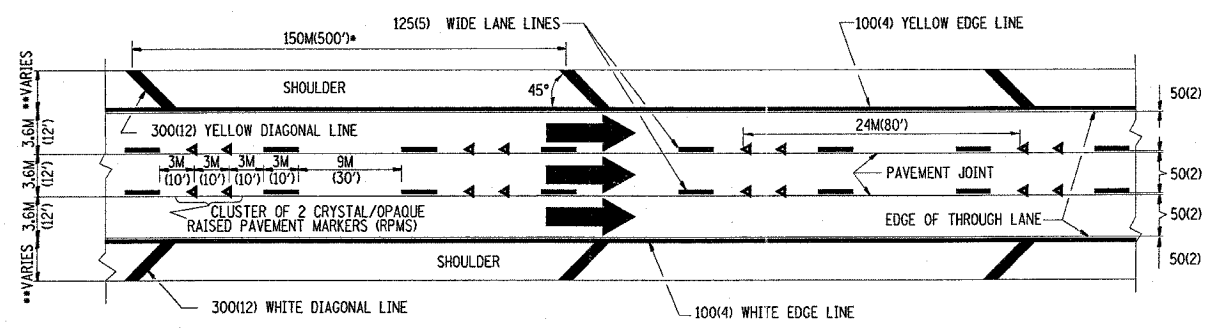
TRAFFIC CONTROL DETAILS FOR FREEWAY SHOULDER CLOSURES PARTIAL RAMP CLOSURES

SCALE: NONE
 DATE: 2/14/2005
 DRAWN BY: DWS
 DESIGNED BY: DWS
 CHECKED BY: TC-17

62889

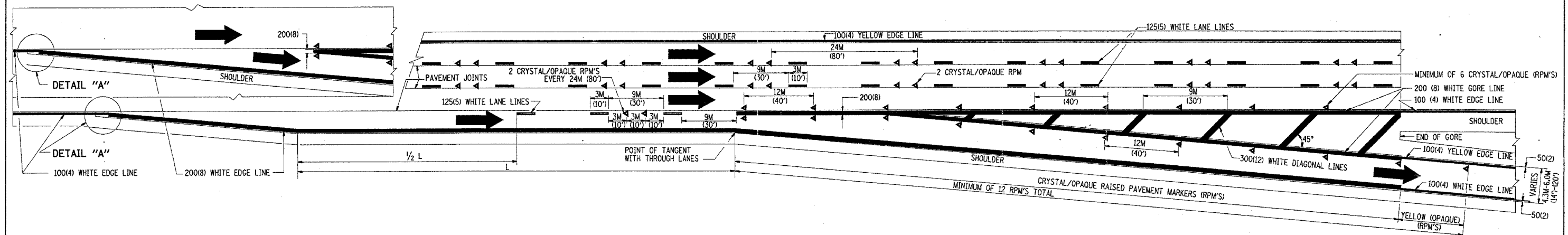
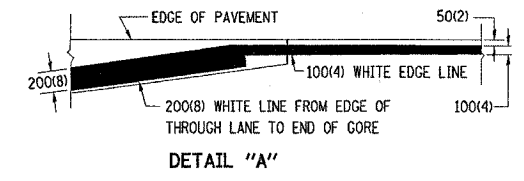
P. L. SHEET	SECTION	COUNTY	TOTAL SHEETS	SHEET NO.
			21	14
STA.		TO STA.		
FED. ROAD DIST. NO. 7		ILLINOIS	FED. AID PROJECT	

- THE DIAGONAL LINES SHALL BE SPACED AT 12M (40') C-C ACROSS ALL STRUCTURES WHICH ARE 150M (500') OR LESS IN LENGTH
- THE DIAGONAL LINES ARE NOT REQUIRED ON SHOULDERS WHICH ARE 1.8M (6') OR LESS IN WIDTH

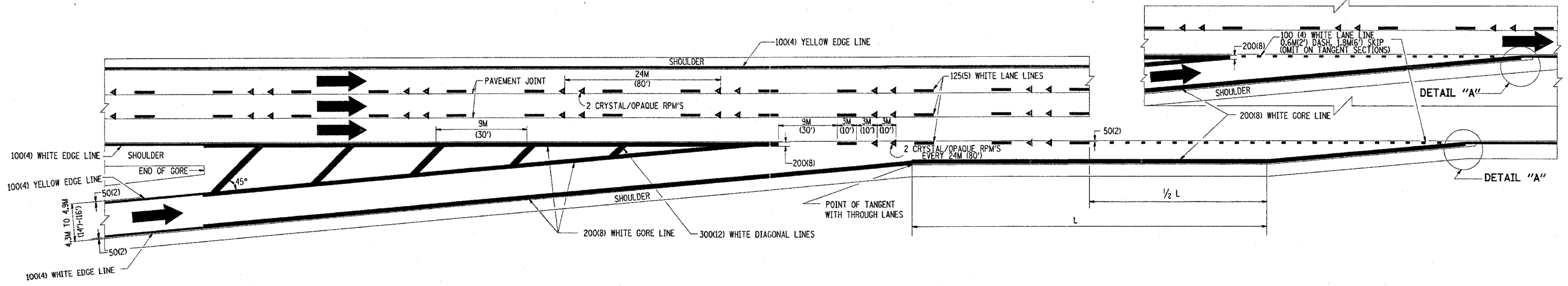


TYPICAL EDGE LINES & LANE LINES

- NOTES:
1. THERMO PLASTIC PAVEMENT MARKING LINE SHALL BE USED FOR THE EDGE LINES, GORE LINES, AND DIAGONAL LINES ON BITUMINOUS PAVEMENT ONLY.
 2. PREFORMED PLASTIC PAVEMENT MARKING LINE SHALL BE USED FOR ALL LANE LINES
 3. PREFORMED PLASTIC PAVEMENT MARKING LINE SHALL BE USED ON PCC PAVEMENT.



TYPICAL EXIT RAMP PAVEMENT MARKINGS



TYPICAL ENTRANCE RAMP PAVEMENT MARKINGS

REVISIONS	
NAME	DATE
DWS	1/90
DWS	5/91
AH	3/96
DWS	7/96

ILLINOIS DEPARTMENT OF TRANSPORTATION

MULTI-LANE FREEWAY PAVEMENT MARKING DETAILS

SCALE: NONE

DATE: 2/14/2005

DRAWN BY C.A.D.D.

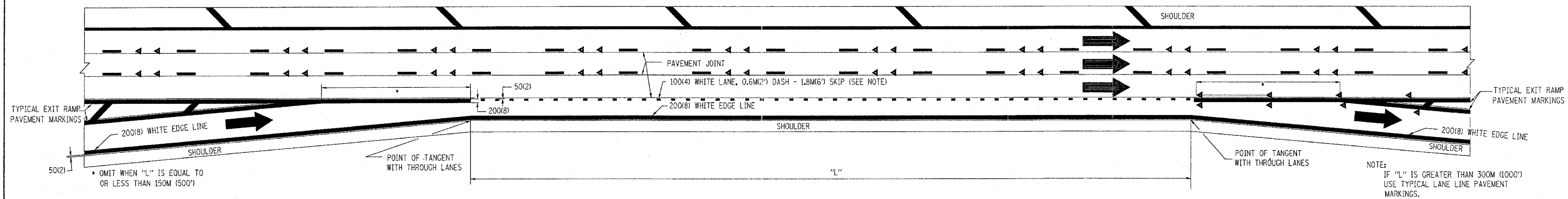
CHECKED BY

TC12 SHEET 1 OF 2

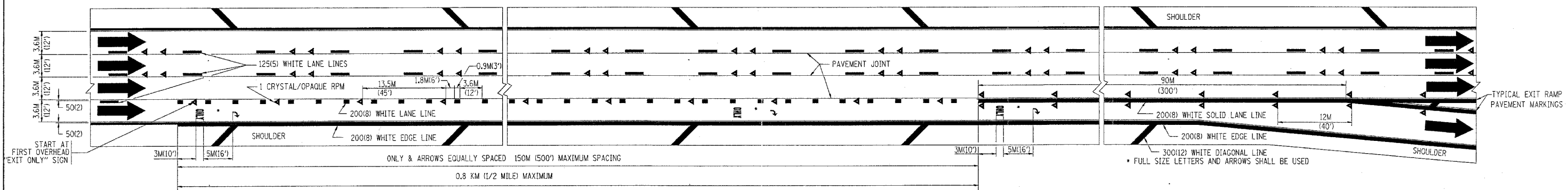
REVISION DATE: 01/01/96

62889

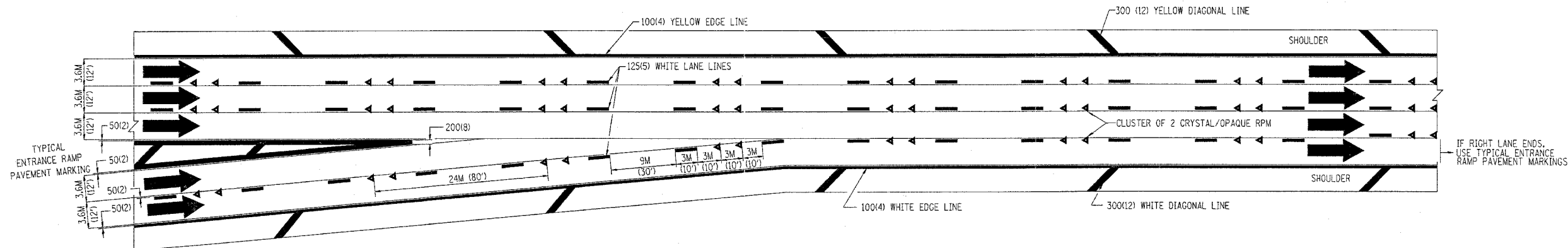
F. A. MILE	SECTION	COUNTY	TOTAL SHEETS	SHEET NO
			21	15
STA.		TO STA.		
FED. ROAD DIST. NO. 1	ILLINOIS	FED. AID PROJECT		



TYPICAL ENTRANCE/EXIT RAMP COMBINATION PAVEMENT MARKINGS



TYPICAL EXIT ONLY LANE PAVEMENT MARKINGS



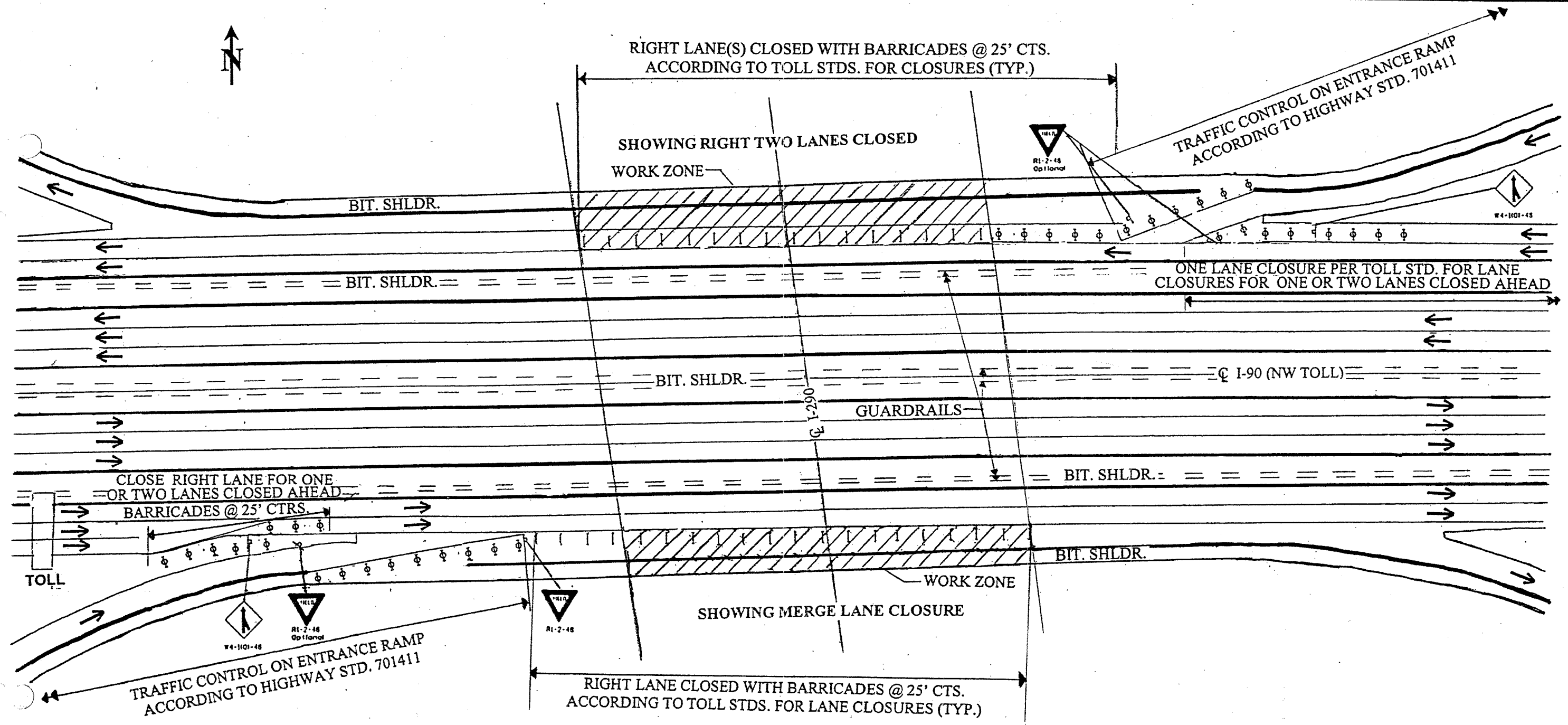
TYPICAL TWO LANE ENTRANCE RAMP PAVEMENT MARKINGS

REVISIONS	
NAME	DATE
DWS	1/90
DWS	5/91

ILLINOIS DEPARTMENT OF TRANSPORTATION
**MULTI-LANE FREEWAY
 PAVEMENT MARKING
 DETAILS**

SCALE: NONE
 DATE: 2/14/2005
 DRAWN BY C.A.D.D.
 CHECKED BY

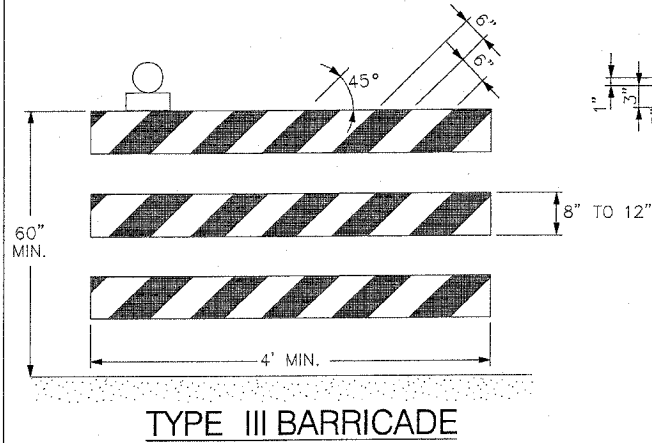
ROUTE	SECTION	COUNTY	TOTAL SHEETS	SHEET NUMBER
FAI 290	2004-120 BR	COOK & DUPAGE	21	16



NOTES:
 COVER CONFLICTING PAVEMENT MARKINGS WITH BLACK TYPE II TAPE. THE COST OF THE TAPE IS INCLUDED IN THE TRAFFIC CONTROL ITEMS. COST OF ADDITIONAL TRAFFIC CONTROL ITEMS SHOWN ARE INCLUDED IN THE COST OF "TRAFFIC CONTROL & PROTECTION (EXPRESSWAYS)".

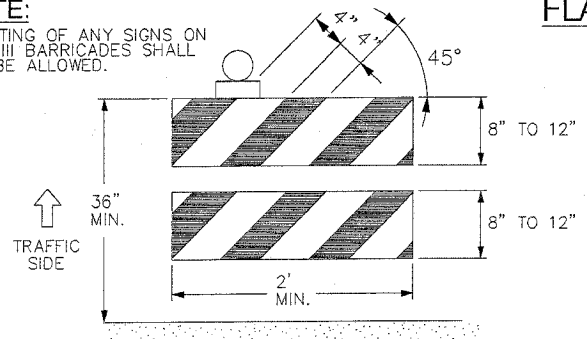
ANY MODIFICATIONS TO THE MAINTENANCE OF TRAFFIC LAYOUT MAY BE REQUESTED BY THE RESIDENT ENGINEER OR THE TOLLWAY AUTHORITY IF NECESSARY TO PROVIDE A BETTER FLOW OF TRAFFIC THROUGH THE CLOSURE.

ILLINOIS DEPARTMENT OF TRANSPORTATION
 ENTRANCE & EXIT RAMP TRAFFIC CONTROL:
 (SN 016-0977, LOCATION 1)

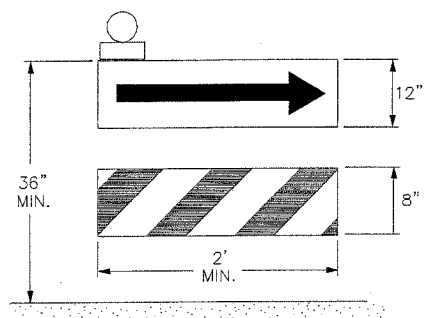


TYPE III BARRICADE

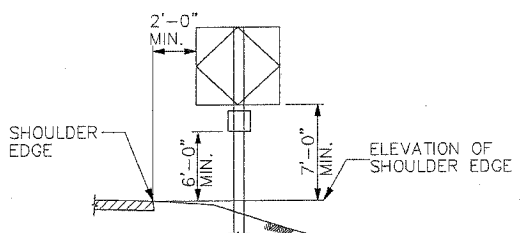
NOTE:
MOUNTING OF ANY SIGNS ON TYPE III BARRICADES SHALL NOT BE ALLOWED.



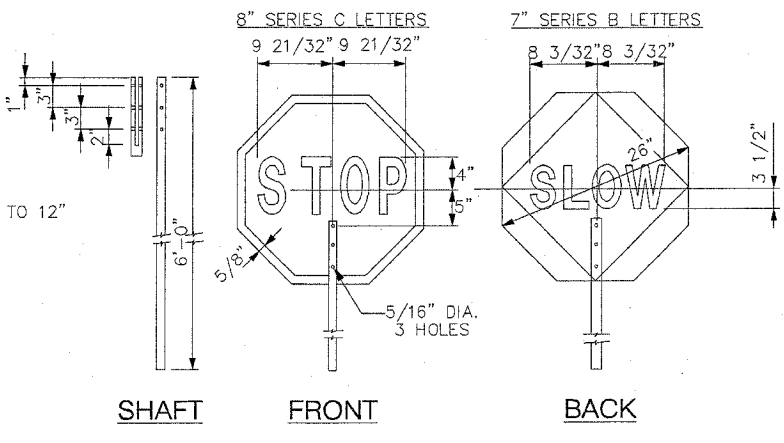
TYPE II BARRICADE



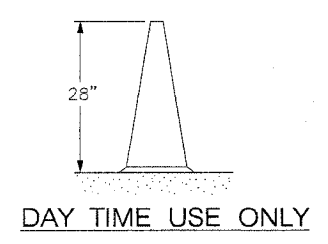
DIRECTION INDICATOR BARRICADE



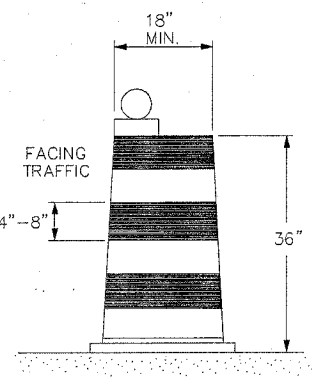
GROUND MOUNT INSTALLATION



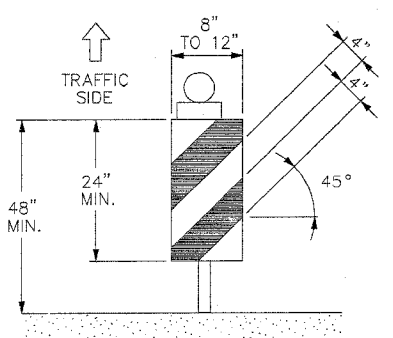
FLAGGER TRAFFIC CONTROL SIGN (PADDLE)



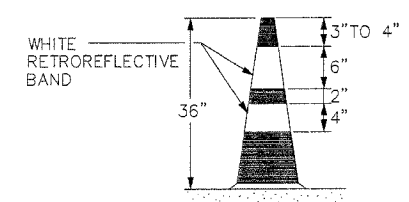
DAY TIME USE ONLY



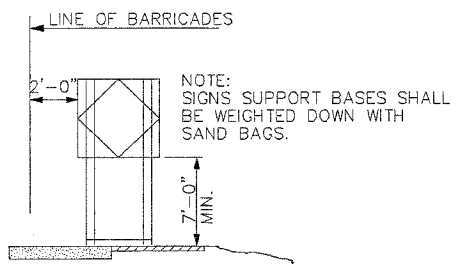
DRUM



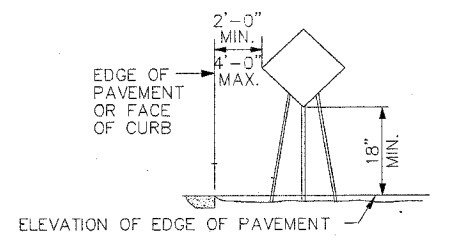
VERTICAL PANEL



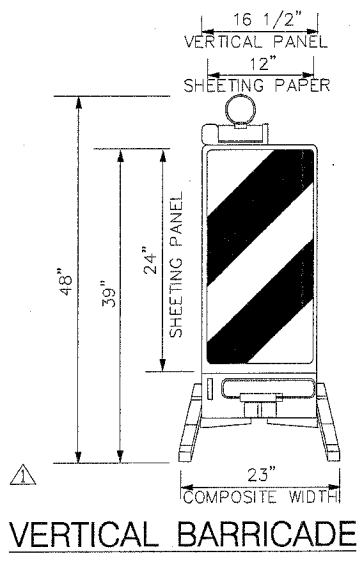
EMERGENCY NIGHT TIME USE CONES



CONSTRUCTION SIGN INSTALLATION PAVEMENT OR SHOULDER MOUNT



PORTABLE STAND



VERTICAL BARRICADE

GENERAL NOTES:

- SHEETING** 1. UNLESS OTHERWISE NOTED, TYPE A REFLECTIVE SHEETING SHALL BE USED FOR TYPE II BARRICADES, DRUMS AND VERTICAL PANELS.
- USAGE** 2. ONLY NON-METALLIC DRUMS OR TYPE II BARRICADES SHALL BE USED FOR LONG TERM CLOSURES. THESE DEVICES SHALL NOT BE INTERMIXED WITHIN AN INDIVIDUAL STRING OF DEVICES. CONES MAY BE USED FOR SHORT TERM CLOSURES (FROM SUNRISE TO 1 HOUR BEFORE SUNSET). VERTICAL PANELS ARE TO BE USED AS SHOWN ON THE PLANS OR DIRECTED BY THE ENGINEER. TYPE III BARRICADES ARE INTENDED FOR ROAD CLOSURES AND SHALL NOT BE USED FOR DELINEATION OR CHANNELIZATION.
- HEIGHT** 3. ALL HEIGHTS SHOWN ARE MEASURED ABOVE THE PAVEMENT SURFACE. DEVICES PLACED ADJACENT TO A TRAFFIC LANE IN AN EXCAVATED AREA 6 INCHES OR DEEPER SHALL HAVE LEGS EXTENDED TO PROVIDE THE DESIRED HEIGHT ABOVE THE PAVEMENT AS SHOWN.
- STRIPING** 4. ALL BARRICADES AND VERTICAL PANELS SHALL HAVE ALTERNATING REFLECTORIZED WHITE AND REFLECTORIZED ORANGE STRIPES SLOPING DOWNWARD AS SHOWN AT 45° TOWARD THE SIDE ON WHICH TRAFFIC WILL PASS. TYPE II BARRICADES SHALL BE STRIPED ON BOTH SIDES. TYPE III BARRICADES SHALL BE STRIPED ON BOTH SIDES WHERE TRAFFIC APPROACHES FROM EITHER DIRECTION. VERTICAL PANELS PLACED ON THE OUTSIDE OF CURVES SHALL BE STRIPED ON BOTH SIDES.
- DRUMS** 5. DRUMS SHALL BE NONMETALLIC AND HAVE ALTERNATING REFLECTORIZED ORANGE AND REFLECTORIZED WHITE HORIZONTAL CIRCUMFERENTIAL STRIPES AS SHOWN. THERE SHALL BE AT LEAST TWO ORANGE AND TWO WHITE STRIPES ON EACH DRUM. IF NONREFLECTIVE SPACES ARE LEFT BETWEEN THE ORANGE AND WHITE STRIPES, THEY SHALL BE NO MORE THAN 2" IN WIDTH. ALL NON-REFLECTORIZED PORTIONS OF THE DRUM SHALL BE ORANGE OR WHITE. DRUMS MAY BE SLIGHTLY CONICAL IN SHAPE AND HAVE ONE OR MORE FLAT SURFACES TO MINIMIZE ROLLING WHEN HIT. DRUMS MAY BE WEIGHTED INTERNALLY WITH JUST ENOUGH SAND, OR OTHER MATERIAL TO PROVIDE STABILITY.
- TYPE II BARRICADES** 6. FRAMES FOR TYPE II BARRICADES SHALL BE NON-METALLIC, PROVIDE A STABLE SUPPORT, AND HAVE NO RIGID STAY BRACING FOR "A" FRAME DESIGNS. THE PREDOMINANT COLOR FOR NON-REFLECTORIZED BARRICADE COMPONENTS SHALL BE ORANGE OR WHITE.
- TYPE III BARRICADES** 7. TYPE III BARRICADES SHALL NOT HAVE ANY VERTICAL OR SLOPING SUPPORTS HEAVIER THAN 4" x 4" LUMBER, 2" x 2" STEEL TUBING, OR 2" x 2" STEEL ANGLES. SIGNS SHALL NOT BE ERECTED ON TYPE III BARRICADES.
- CONES** 8. MINIMUM WEIGHT SHALL BE 7 LBS. FOR 28" HIGH CONES WITH A MINIMUM OF 60 PERCENT OF THE TOTAL WEIGHT IN THE BASE.
- I.D.** 9. BARRICADES MAY BE IDENTIFIED WITH A LEGEND THAT DOES NOT EXCEED ONE INCH IN HEIGHT ON A NON-REFLECTIVE SURFACE IN A LOCATION NOT VISIBLE TO TRAFFIC.
- WEIGHTS** 10. WEIGHTS OF CONCRETE, STONE OR BRICK WILL NOT BE ALLOWED AND ALL WEIGHTS OTHER THAN SANDBAGS MUST BE RIGIDLY ATTACHED TO THE BARRICADES AS CLOSE TO THE GROUND AS POSSIBLE. NO WEIGHTS WILL BE ALLOWED ON THE TOP RAIL OF BARRICADES. SANDBAGS MAY BE PLACED ON THE BARRICADE LEGS, OVER THE STRIPED BOTTOM RAILS NOT FACING TRAFFIC OR SUSPENDED FROM THE BARRICADE RAIL OR FRAME IN SUCH A MANNER SO THAT THE BULK OF THE SAND IS AT LEAST 18" BELOW THE TOP OF THE BARRICADE.
- LIGHTS** 11. WARNING LIGHTS ON BARRICADES, DRUMS OR VERTICAL PANELS SHALL BE MOUNTED ABOVE THE TOP OF THE DEVICE TO THE SIDE ON WHICH TRAFFIC WILL PASS AND SHALL NOT OBSCURE ANY REFLECTORIZED PORTION OF THE DEVICE.
- VERTICAL PANELS** 12. VERTICAL PANELS MAY BE EITHER POST MOUNTED, FRAME SUPPORTED OR ATTACHED TO THE TOP OF A BARRIER. POST MOUNTED PANELS SHALL BE FIRMLY ATTACHED TO LIGHT WEIGHT METAL POSTS WITH A TOP HEIGHT OF 48" ABOVE THE PAVEMENT SURFACE, OR AS APPROVED BY THE ENGINEER.
- FLAGGER PADDLE FACE** 13. THE "STOP" FACE SHALL CONSIST OF WHITE LETTERS AND BORDER ON A RED REFLECTORIZED BACKGROUND. THE "SLOW" FACE SHALL CONSIST OF BLACK LETTERS AND BORDER ON A FLUORESCENT ORANGE REFLECTORIZED BACKGROUND. AREAS OUTSIDE THE SIGN BORDERS SHALL BE LIGHT BLUE OR BLACK. ALL COLORS AND LETTERS SHALL MEET APPLICABLE FEDERAL STANDARDS.
- FLAGGER PADDLE SHAFT** 14. THE SHAFT SHALL CONSIST OF TWO SECTIONS JOINED BY A COUPLING LOCATED 60 INCHES FROM THE BOTTOM OF THE SHAFT. THE PORTION OF THE SHAFT WITHIN THE SIGN FACE SHALL MATCH THE SIGN COLORS.
- FLAGGER SIGN** 15. THE SIGN BASE MATERIAL SHALL BE 0.08 INCH THICK ALUMINUM. THE SIGN SHALL BE ATTACHED TO THE SHAFT WITH RUST RESISTANT HARDWARE.
- FLAGGER PADDLE USAGE** 16. THE SIGN SHALL BE FURNISHED BY THE CONTRACTOR AND SHALL BE USED BY THE FLAGGER IN LIEU OF FLAGS OR OTHER SIGNALING DEVICES.
- SIGN MOUNTING** 17. CONSTRUCTION SIGNS MOUNTED FOR SHORT TERM CLOSURES, LESS THAN 12 HOURS, MAY BE PLACED ON PORTABLE STANDS AS SHOWN. CONSTRUCTION SIGNS MOUNTED FOR NIGHTTIME OR MOUNTED LONGER THAN A SHORT TERM CLOSURE SHALL BE GROUND, PAVEMENT OR SHOULDER MOUNTED.
- 18. MOUNTING OF ANY SIGNS ON TYPE III BARRICADES SHALL NOT BE ALLOWED.
- 19. ALL MOT DEVICES AND SIGN SUPORTS SHALL BE CERTIFIED AS MEETING THE REQUIRED TEST LEVEL OF NCHRP REPORT 350.

C:\p1\11-04-18 02:15:20\Internal\Csub\Webb\ufbs/cvl: 11-04-18 02:15:20

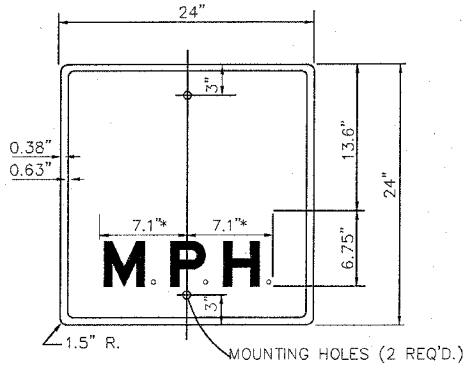
APPROVED: *Jeff Daley*
DATE: 5-28-2004

CTE ENGINEERS
CONSOER TOWNSEND ENVIRODYNE ENGINEERS, INC.

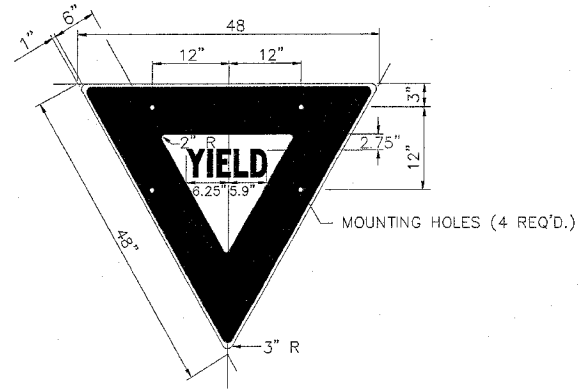
THE ILLINOIS STATE TOLL HIGHWAY AUTHORITY
2700 OGDEN AVENUE
DOWNERS GROVE, ILLINOIS 60515

REVISIONS	
NO	DATE
1	6/1/04
	CORRECTIONS

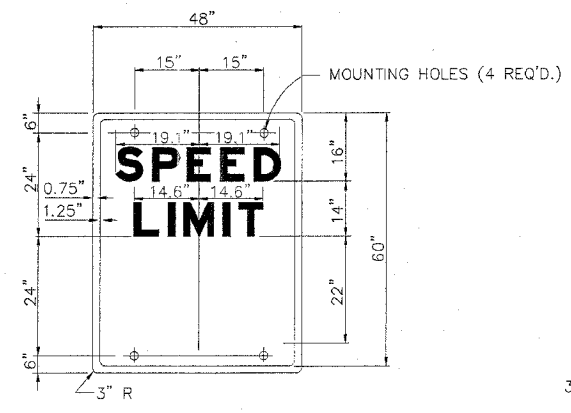
STANDARD SD 04-10A	DRAWING NO.
STANDARD PROTECTIVE DEVICES	E1
	OF



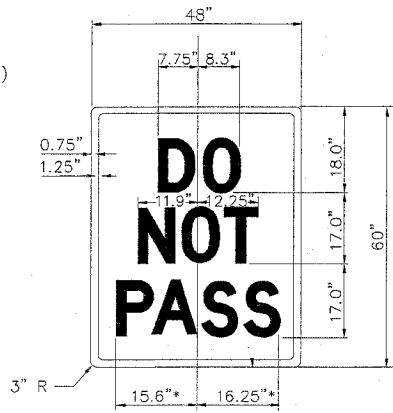
SIGN W13-1
 COLOR: BACKGROUND - *
 BORDER AND LETTERS - BLACK
 SIZE: 24" x 24"
 LETTERING: LEGEND - 10" FEDERAL SERIES E
 M.P.H. - 4" FEDERAL SERIES E
 MOUNTING HOLES: 7/16" DIAMETER, 2 HOLES,
 SPACED AS SHOWN



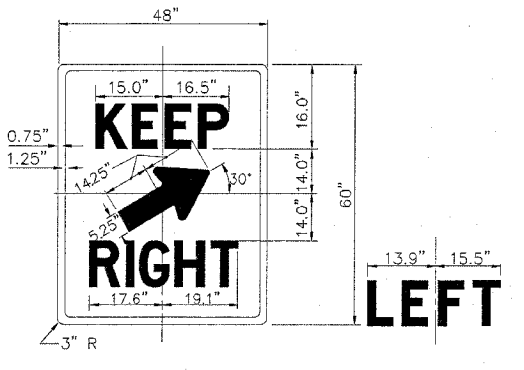
SIGN R1-2
 COLOR: BACKGROUND - WHITE (REFLECTORIZED)(*A)
 BORDER AND LETTERS - RED (REFLECTORIZED)(*A)
 SIZE: 48" x 48"
 LETTERING: 4" FEDERAL SERIES C
 MOUNTING HOLES: 7/16" DIAMETER, 4 HOLES,
 SPACED AS SHOWN



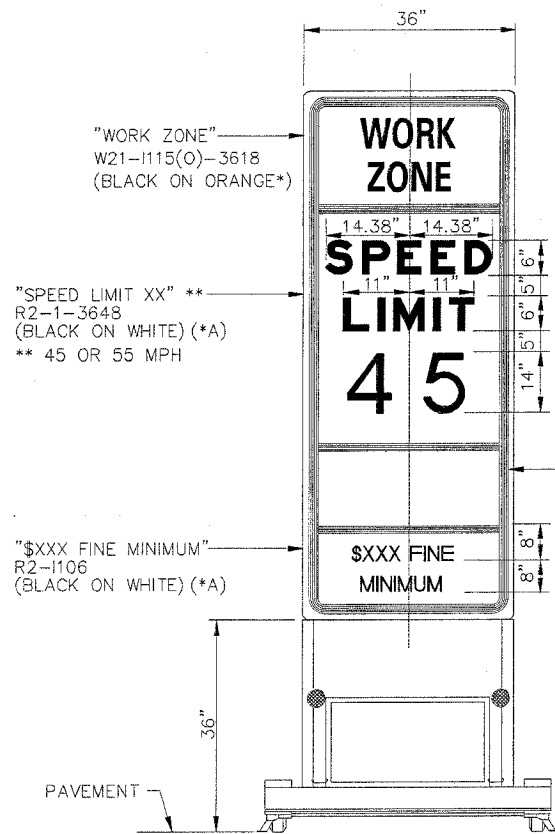
SIGN R2-1
 COLOR: BACKGROUND - WHITE (REFLECTORIZED)(*A)
 BORDER AND LETTERS - BLACK
 SIZE: 48" x 60"
 LETTERING: 8" FEDERAL SERIES E, EXCEPT LEGEND WHICH IS
 16" FEDERAL SERIES E
 MOUNTING HOLES: 7/16" DIAMETER, 4 HOLES,
 SPACED AS SHOWN



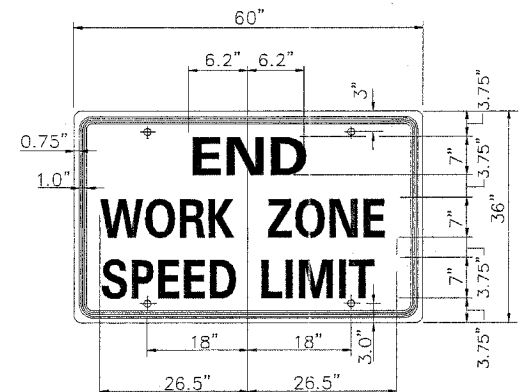
SIGN R4-1
 COLOR: BACKGROUND - WHITE (REFLECTORIZED)(*A)
 BORDER AND LETTERS - BLACK
 SIZE: 48" x 60"
 LETTERING: 8" FEDERAL SERIES E, EXCEPT LEGEND WHICH IS
 16" FEDERAL SERIES E
 MOUNTING HOLES: 7/16" DIAMETER, 4 HOLES,
 SPACED AS SHOWN ON SIGN R2-1



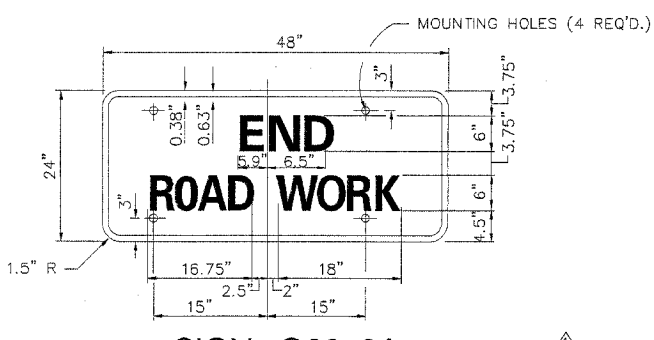
SIGN R4-7B & R4-8B
 COLOR: BACKGROUND - WHITE (REFLECTORIZED)(*A)
 BORDER AND LETTERS - BLACK
 SIZE: 48" x 60"
 LETTERING: 8" FEDERAL SERIES E, EXCEPT LEGEND WHICH IS
 16" FEDERAL SERIES E
 MOUNTING HOLES: 7/16" DIAMETER, 4 HOLES,
 SPACED AS SHOWN ON SIGN R2-1



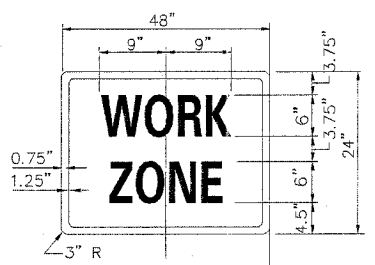
WORK ZONE SPEED LIMIT SIGN ASSEMBLY



SIGN G20-1103
 (BLACK ON ORANGE -*)
 COLOR: BACKGROUND - ORANGE
 BORDER AND LETTERS - BLACK
 SIZE: 60" x 36"
 LETTERING: 6" FEDERAL SERIES C,
 MOUNTING HOLES: 7/16" DIAMETER, 4 HOLES,
 SPACED AS SHOWN



SIGN G20-2A
 (BLACK ON ORANGE -*)
 COLOR: BACKGROUND - ORANGE
 BORDER AND LETTERS - BLACK
 SIZE: 48" x 36"
 LETTERING: 6" FEDERAL SERIES C,
 MOUNTING HOLES: 7/16" DIAMETER, 4 HOLES,
 SPACED AS SHOWN



SIGN G20-1102
 (BLACK ON ORANGE -*)
 COLOR: BACKGROUND - ORANGE
 BORDER AND LETTERS - BLACK
 SIZE: 48" x 24"
 LETTERING: 6" FEDERAL SERIES C,
 MOUNTING HOLES: 7/16" DIAMETER, 4 HOLES,
 SPACED AS SHOWN ON SIGN G20-2A

NOTES:

(APPLY TO STANDARDS SD XX-11A, SD XX-11B & SD XX-11C)

1. ALL LETTERING IS DESIGNATED BY SIZE AND SERIES IN ACCORDANCE WITH THE LATEST EDITION OF "STANDARD ALPHABETS FOR HIGHWAY SIGNS AND PAVEMENT MARKINGS" AS PUBLISHED BY THE U.S. DEPARTMENT OF TRANSPORTATION. LETTERING SPACING SHALL BE IN ACCORDANCE WITH THIS GUIDE EXCEPT WHERE NOTED.
2. SYMBOLS AND ARROWS SHALL CONFORM TO THE DETAILS SHOWN IN THE LATEST EDITION OF "STANDARD HIGHWAY SIGNS" AS PUBLISHED BY THE U.S. DEPARTMENT OF TRANSPORTATION.
3. SEE THE CONTRACT REQUIREMENTS FOR ADDITIONAL NOTES AND SPECIFICATIONS.
 * - FLUORESCENT ORANGE TYPE A REFLECTIVE SHEETING PER STANDARD SPECIFICATION.
 (*A) - TYPE A REFLECTIVE SHEETING PER STANDARD SPECIFICATION.

APPROVED: *Jeff Daley*
 DATE: 5-28-2004

CTE ENGINEERS
 CONSIDER TOWNSEND ENVIRODYNE ENGINEERS, INC.

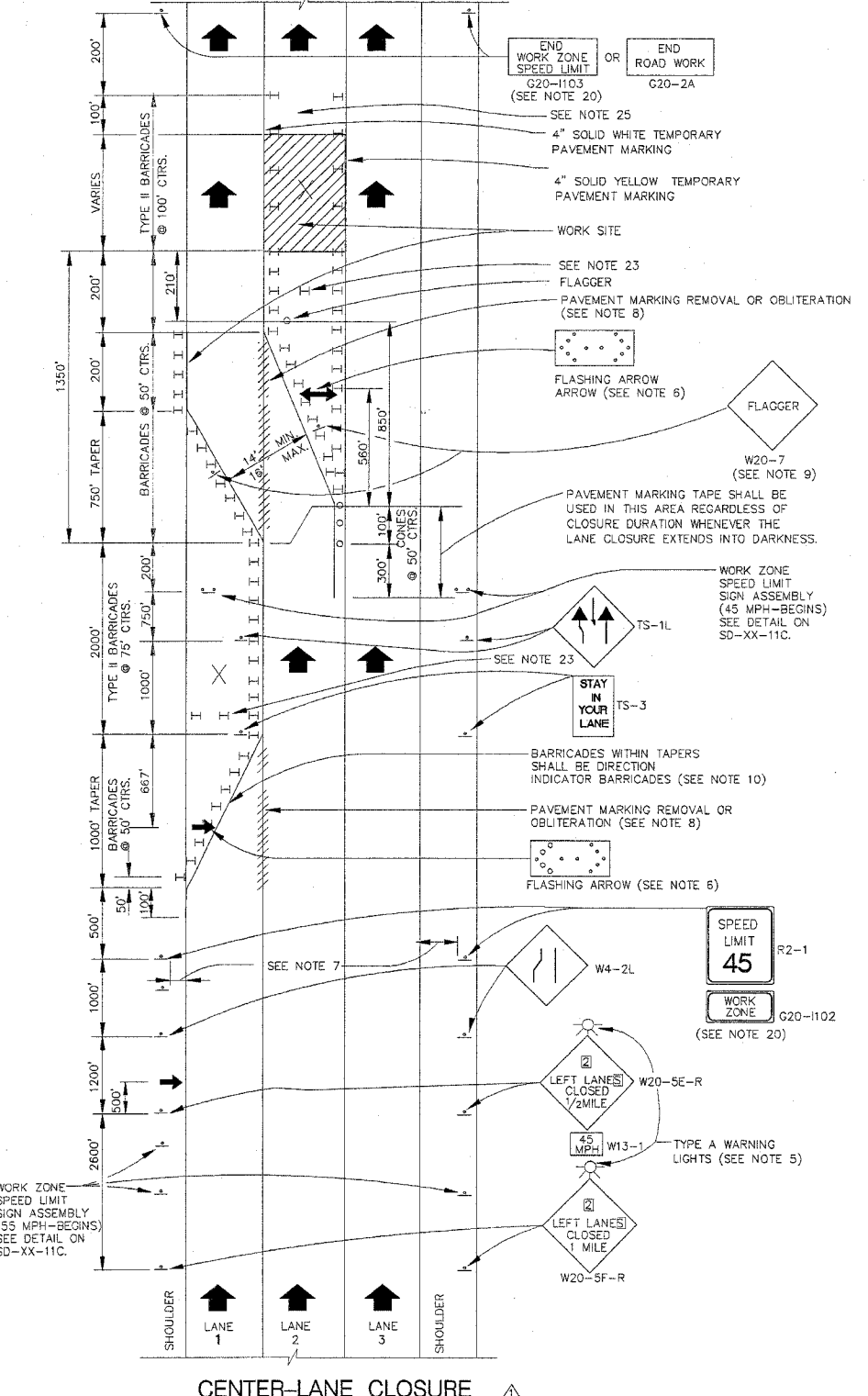
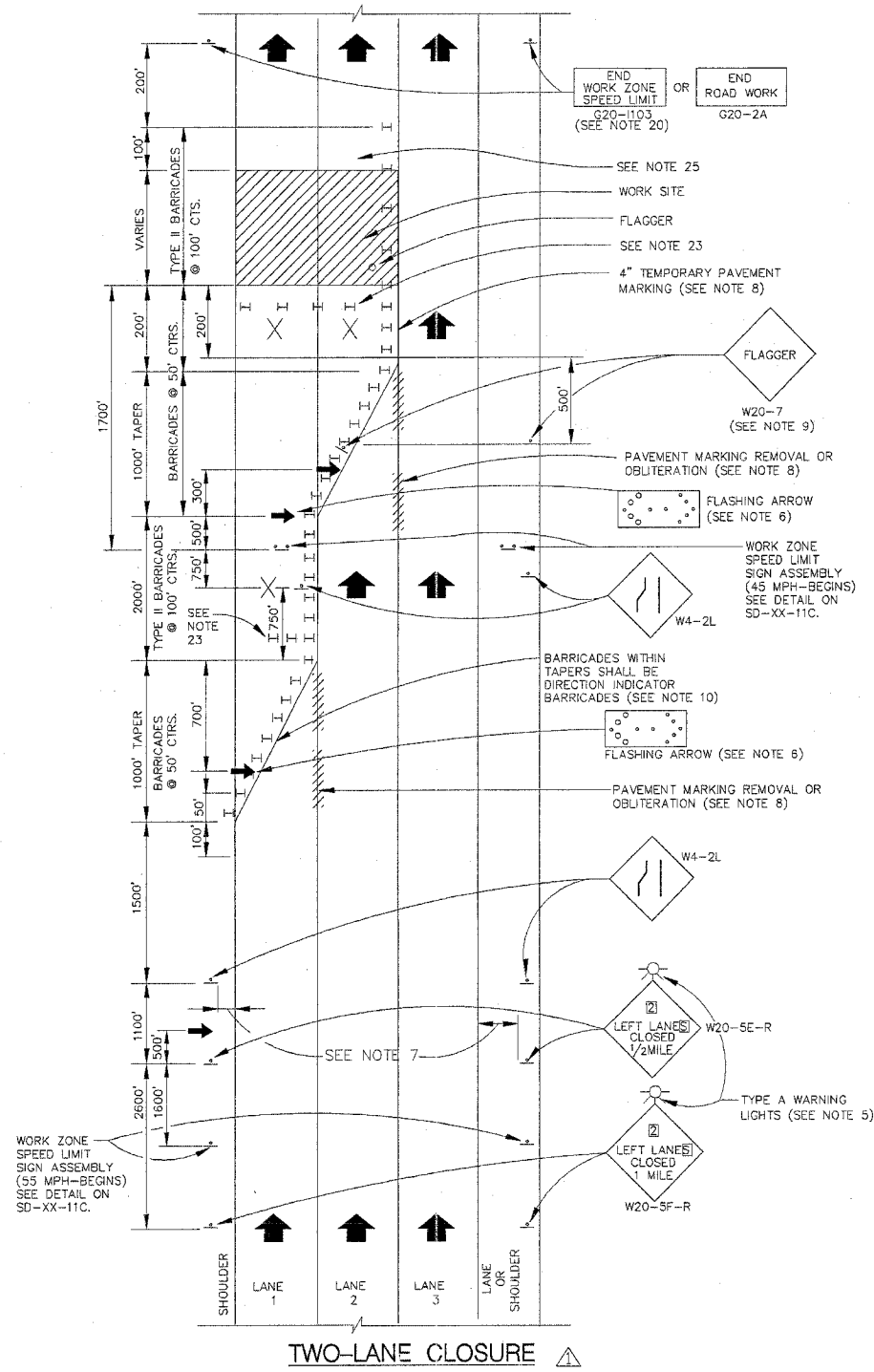
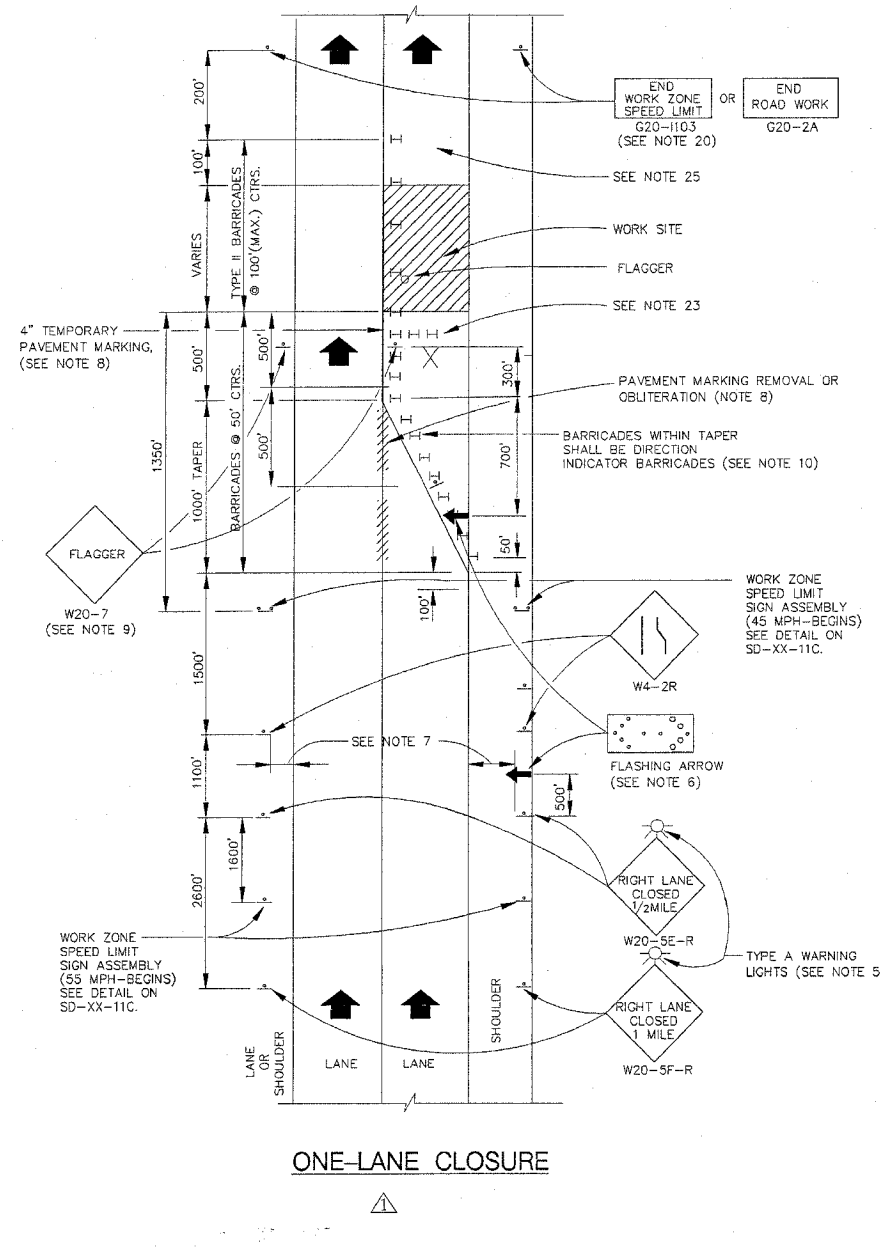
THE ILLINOIS STATE TOLL HIGHWAY AUTHORITY
 2700 OGDEN AVENUE
 DOWNERS GROVE, ILLINOIS 60515

REVISIONS		
NO.	DATE	DESCRIPTION
1	6/1/04	REVISED SIGN ASSEMBLY DELETED CONSTRUCTION SPEED SIGN.

STANDARD SD 04-11C
 CONSTRUCTION SIGNS III

DRAWING NO.
 E6
 OF

I:\11\1106\1106\1106.dwg / I:\11\1106\1106\1106.dwg / I:\11\1106\1106\1106.dwg / I:\11\1106\1106\1106.dwg / I:\11\1106\1106\1106.dwg



GENERAL NOTES

- FOR DETAILS OF PROTECTIVE DEVICES AND SIGNS SEE APPLICABLE TOLLWAY STANDARDS DRAWINGS.
- IF CLOSURES ARE EXPECTED TO PRODUCE TRAFFIC BACKUPS EXTENDING BEYOND THE FIRST WARNING SIGN SHOWN ON THE DETAILS, ADDITIONAL UPSTREAM SIGNS SHALL BE PLACED SO THAT THE TRAFFIC CONTROL ZONE ENCOMPASSES THE ANTICIPATED BACKUP ZONE.
- LONGITUDINAL DIMENSIONS MAY BE ADJUSTED SLIGHTLY TO FIT FIELD CONDITIONS.
- THESE DETAILS ALSO APPLY TO OPPOSITE HAND LANE CLOSURES BY CHANGING SIGN LEGENDS AND ARROW DIRECTIONS TO INDICATE THE APPROPRIATE CLOSURE.
- FOR NIGHT TIME CLOSURES, ONE TYPE A WARNING LIGHT SHALL BE INSTALLED ABOVE EACH OF THE 1 MILE AND 1/2 MILE ADVANCE WARNING SIGNS. FOR DAYLIGHT-ONLY CLOSURES, THE LIGHTS MAY BE OMITTED AND A MINIMUM OF 18" X 18" ORANGE WARNING FLAG AFFIXED TO THE FIRST SIGN ONLY.
- FOR ANY LANE CLOSURE, FLASHING ARROW BOARDS SHALL BE REQUIRED AND IN OPERATION AT ALL TIMES. THE FLASHING ARROW BOARD IN ADVANCE OF THE TAPER SHALL BE PROTECTED WITH THREE TYPE II BARRICADES AT 50' O.C.
- CONSTRUCTION SIGNS SHALL GENERALLY BE POST-MOUNTED OR ATTACHED TO PORTABLE SUPPORTS AND SHALL BE INSTALLED 8' TO 12' FROM ADJACENT TRAVEL LANE WHEREVER POSSIBLE, IN NO CASE SHALL SIGNS BE LOCATED TO PROVIDE LESS THAN 2' CLEARANCE BETWEEN EDGE OF SIGN AND ADJACENT TRAVEL LANE.
- PAVEMENT MARKING TAPE AND REMOVAL OR OBLITERATION OF EXISTING MARKINGS SHALL BE REQUIRED WHEN THE CLOSURE TIME EXCEEDS FOUR DAYS. THIS WORK SHALL BE MEASURED AND PAID FOR SEPARATELY.
- WHEN A FLAGGER IS NOT ON STATION, THE FLAGGER AHEAD SIGN SHALL BE PROMPTLY REMOVED, COVERED OR TURNED TO FACE AWAY FROM TRAFFIC. SEE NOTE 14 REGARDING MOVING OPERATIONS.
- DIRECTION INDICATOR BARRICADES SHALL BE USED IN LANE TAPERS.
- THE CONTRACTOR SHALL PROVIDE SUITABLE FRAMING TO SUPPORT THE GUIDE SIGN. THE ADEQUACY OF THE SUPPORT SHALL BE THE RESPONSIBILITY OF THE CONTRACTOR.
- FOR CLOSURES OTHER THAN SHORT TERM (SUNRISE TO ONE HOUR BEFORE SUNSET), THE MINIMUM HEIGHT OF THE SIGN FROM SHOULDER ELEVATION SHALL BE 7'-0".
- CONES MAY BE USED IN LIEU OF BARRICADES IN THE BUFFER AND WORK AREAS, WHEN THE CLOSURE IS FOR MAINTENANCE OPERATIONS.

- WHENEVER WORKERS ARE PRESENT, ONE WORK ZONE SPEED LIMIT SIGN ASSEMBLY WITH A 45 MPH POSTED SPEED SHALL BE PLACED ADJACENT TO THE OPEN LANE AT A DISTANCE OF 1000' MINIMUM TO 2,500' MAXIMUM IN ADVANCE OF WORKERS THROUGHOUT THE LANE CLOSURE. MOVING OPERATIONS WILL REQUIRE CONTINUOUS ADJUSTMENT OF THE SIGN ASSEMBLY LOCATION TO MAINTAIN THE ABOVE INTERVAL.
- AN ADDITIONAL SIGN ASSEMBLY SHALL BE PLACED 500' BEYOND THE LAST ENTRANCE RAMP FOR EACH INTERCHANGE THAT FALLS WITHIN THE 2,500'.
- THE SIGN ASSEMBLY SHALL BE PLACED NO CLOSER THAN 500' TO ANY OTHER SIGN.
- THE SIGN ASSEMBLY SHALL NOT BE UTILIZED WHEN WORKERS ARE BEHIND A TEMPORARY (MOVABLE BARRIER) WALL.
- THE SIGN ASSEMBLY SHALL BE PROMPTLY REMOVED OR COVERED WHEN WORKERS ARE NOT PRESENT.
- ALL CONFLICTING SPEED LIMIT SIGNS SHALL BE COVERED OR REMOVED.
- SIGNS WITH G20-2A, OR AND G20-1103 SHALL BE IN PLACE WHEN THE SIGN ASSEMBLY (WORK ZONE SPEED LIMIT SIGN) IS UP. THESE SIGNS SHALL ALSO BE REMOVED OR COVERED WHEN THE SIGN ASSEMBLY IS REMOVED OR COVERED, UNLESS STILL REQUIRED BY THE MAINTENANCE OF TRAFFIC PLAN.
- BARRICADES ARE TO BE LOCATED AT JOINT LINE WHEN WORK AREA EXTENDS UP TO JOINT UNLESS OTHERWISE SHOWN ON THE PLANS.

- SEE MAINTENANCE OF TRAFFIC DRAWINGS FOR ADDITIONAL SIGNING IN THIS AREA.
- PLACE CHECK BARRICADES IN ACCORDANCE WITH SECTION 1001.6.2 OF THE STANDARD SPECIFICATIONS.
- REFER TO SHEET 2 OF 2 OF THIS STANDARD FOR SIGNAGE IN ADVANCE OF 1 MILE.
- WHEN THE CLOSURE EXTENDS A MINIMUM 2000 FEET PAST THE LAST WORKER, AND THE WIDTH OF THE OPEN LANES HAVE NOT BEEN ALTERED, A WORK ZONE SPEED LIMIT SIGN ASSEMBLY (55-RESUMES) SHALL BE PLACED AT 1/2 MILE INTERVALS UNTIL THE END OF THE CLOSURE, OR THE NEXT WORK OPERATION.

APPROVED: *Jeff Wiley*
CHIEF ENGINEER
DATE: 5-21-2004

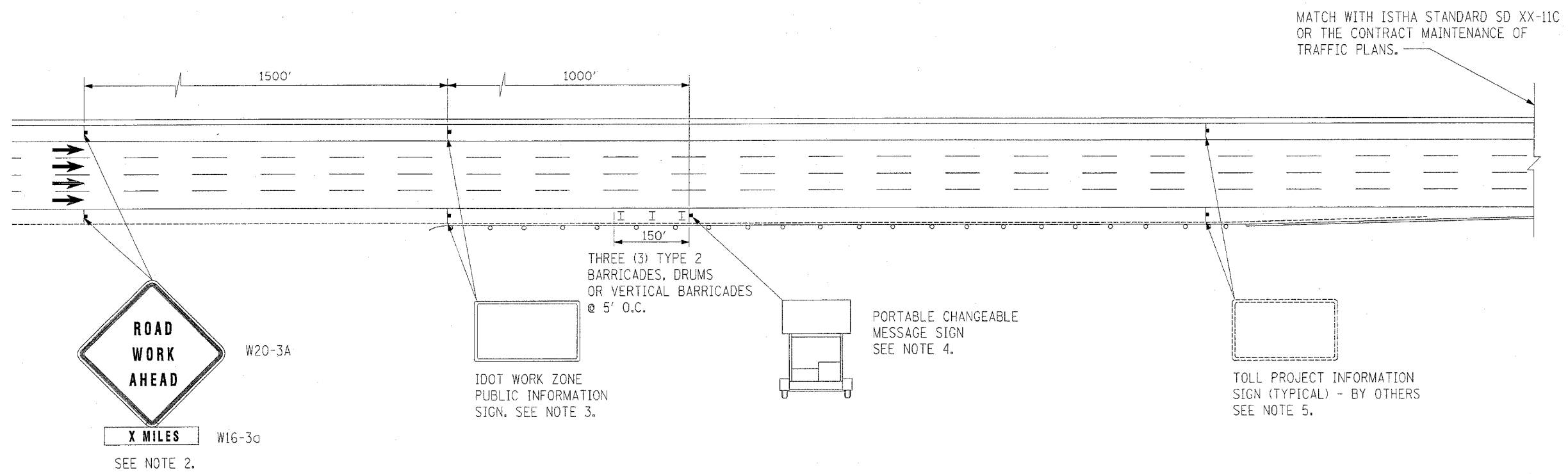
CTE ENGINEERS
CONSOER TOWNSEND ENVIRODYNE ENGINEERS, INC.

THE ILLINOIS STATE TOLL HIGHWAY AUTHORITY
2700 OGDEN AVENUE
DOWNERS GROVE, ILLINOIS 60515

REVISIONS	
NO.	DATE
1	6/1/04
	CORRECTIONS

STANDARD SD 04-20A
LANE CLOSURE DETAILS

DRAWING NO.
E10
OF



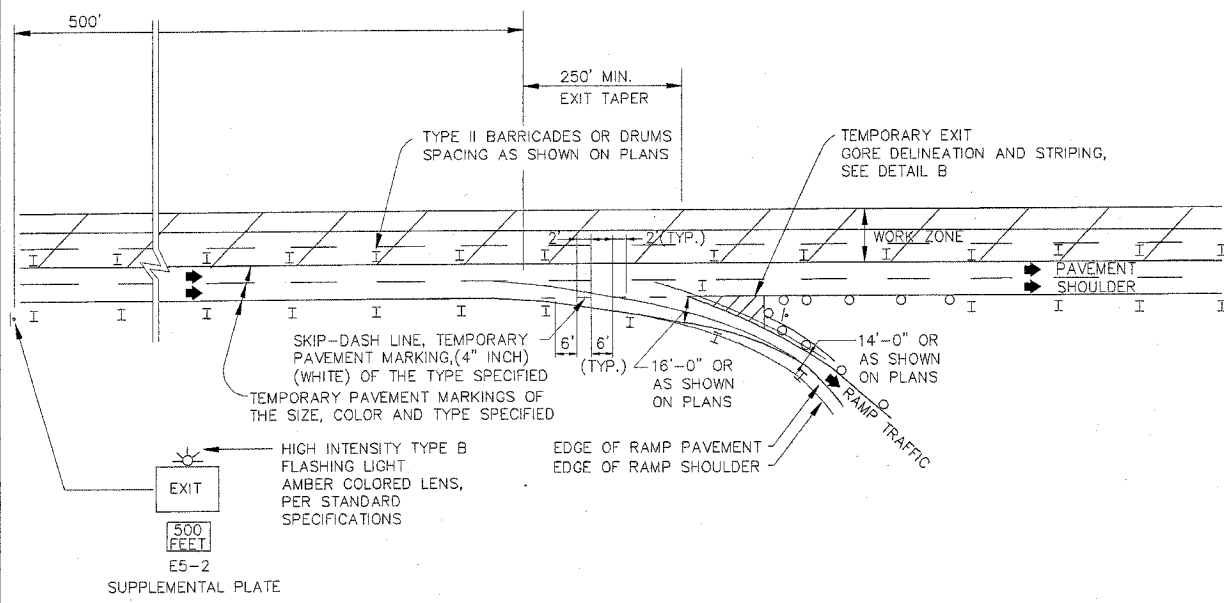
NOTES

1. THE ADVANCE SIGNAGE SHOWN ON THIS STANDARD SHALL APPLY ANY TIME THE CONTRACTOR CLOSES ONE OR MORE LANES, OR IS REQUIRED TO SHIFT THE LANE ALIGNMENT. THE 'ROAD WORK AHEAD' SIGNS, WORK ZONE PUBLIC INFORMATION SIGNS AND PORTABLE CHANGEABLE MESSAGE ARE STATIONARY.
2. THE ROAD CONSTRUCTION AHEAD SIGN (W20-1A, WITH W16-3a SUPPLEMENTAL PLATE) SHALL BE LOCATED UP TO 5 MILES IN ADVANCE OF THE PROJECT LIMITS, WITH THE LOCATION BEING DETERMINED BY THE ENGINEER.
3. THE WORK ZONE INFORMATION SIGN IS 60" WIDE BY 48" HIGH. THE CONTRACTOR SHALL OBTAIN THE CAMERA-READY ARTWORK REQUIRED FOR THE SIGN MESSAGE BY CONTACTING IDOT'S CENTRAL BUREAU OF OPERATIONS (217-782-2076).
4. THE PORTABLE CHANGEABLE MESSAGE SIGN SHALL BE USED TO DISPLAY THE STATUS OF LANE WITHIN THE CONTRACT LIMITS. THE PRIMARY MESSAGES SHALL BE:
 "RIGHT LANE(S) CLOSED" / "X MILES AHEAD"
 "LEFT LANE (S) CLOSED" / "X MILES AHEAD"
 "LANE(S) SHIFT" / "X MILES AHEAD"
 "ALL LANES OPEN".
 THE PORTABLE CHANGEABLE MESSAGE SIGN MAY BE MOVED TO THE MEDIAN SHOULDER WHEN THE LANE CLOSURES ARE ON THE LEFT, PROVIDED THE EXISTING SHOULDER WIDTH IS ADEQUATE.
5. THE TOLLWAY WILL FURNISH AND INSTALL STATIC PROJECT INFORMATION SIGNS IN ADVANCE, THROUGH AND AT THE END OF THE WORK ZONE. THESE SIGNS WILL BE INSTALLED ALONG THE OUTSIDE SHOULDER WITH THE ADVANCE SIGNS LOCATED BETWEEN THE PORTABLE CHANGEABLE AGE SIGN AND THE "ROAD WORK - 1 MILE AHEAD" SIGN. THE ENGINEER AND CONTRACTOR SHALL COORDINATE WITH THE AUTHORITY REGARDING THE LOCATION OF THESE SIGNS, AND NOTIFY THE AUTHORITY OF ANY DAMAGE TO THE SIGNS OR SUPPORTS.

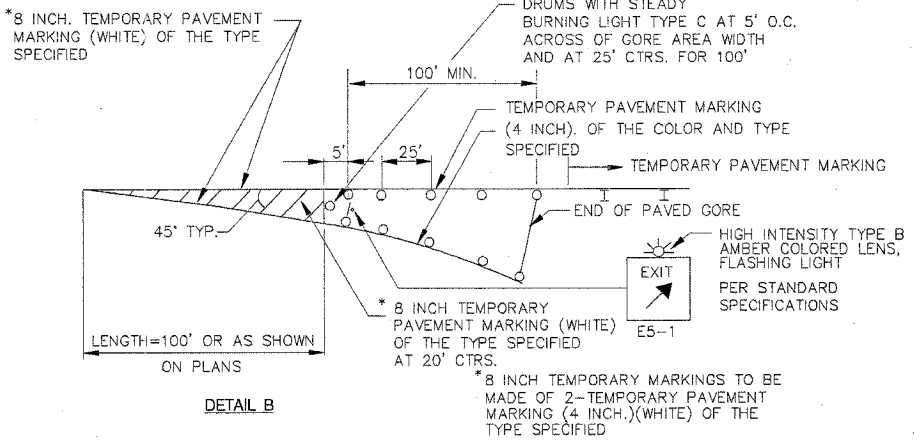
SHEET 2 OF 2

APPROVED <i>Jeff Daley</i> CHIEF ENGINEER DATE 5-28-2004	CONSOER TOWNSEND ENVIRODYNE ENGINEERS, INC.	THE ILLINOIS STATE TOLL HIGHWAY AUTHORITY 2700 OGDEN AVENUE DOWNERS GROVE, ILLINOIS 60515	REVISIONS		STANDARD SD 04-20A LANE CLOSURE DETAILS ADVANCE SIGNAGE	DRAWING NO. E10A OF
			NO.	DATE		

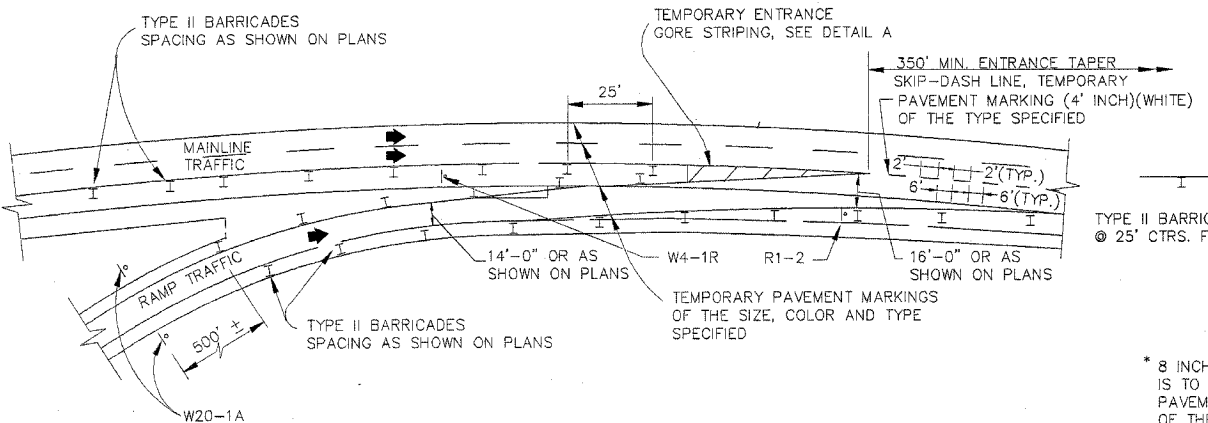
I:\projects\1116140\sharad\intranet\internal\c_b\web\pubg\lcl: 11-6-140 07/14/2005



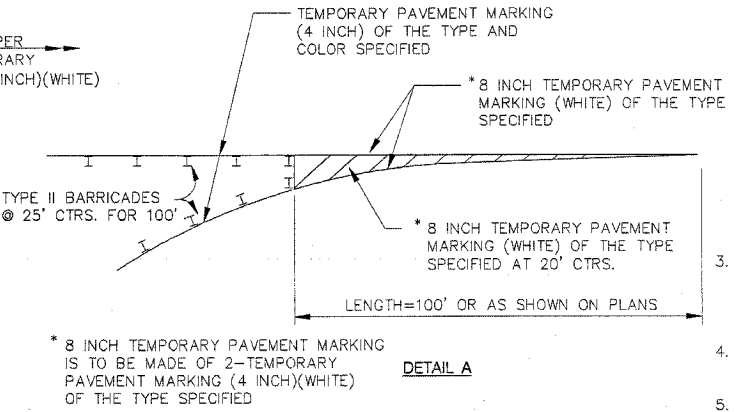
TYPICAL APPLICATION OF TEMPORARY EXIT GORE DELINEATION AND SIGNING



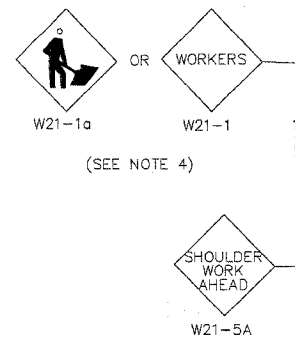
TEMPORARY EXIT GORE DELINEATION AND SIGNING



TYPICAL APPLICATION OF TEMPORARY ENTRANCE GORE DELINEATION AND SIGNING



TEMPORARY ENTRANCE GORE STRIPING



SHOULDER CLOSURE DETAIL

GENERAL NOTES:

1. THE SHOULDER SHALL BE CLOSED WHEN A WORK ACTIVITY REQUIRING 15 OR MORE MINUTES IS PERFORMED AT A DISTANCE WHICH IS LESS THAN 15 FEET BUT NO CLOSER THAN 2 FEET THE EDGE OF PAVEMENT.
2. THE ADJACENT EXTERIOR LANE SHALL BE CLOSED WHEN WORK IS PERFORMED WITHIN 2 FEET FROM THE EDGE OF PAVEMENT.

3. THE CHANNELIZING DEVICES WHICH SEPARATE THE WORK SPACE FROM THE ADJACENT TRAVEL LANE SHALL BE SPACED AT 25' FOR THE NINE DEVICES (200 FEET) AND AT A MAXIMUM OF 50' FOR ALL ADDITIONAL DEVICES.
4. WHEN THE WORKSITE IS UNATTENDED, SUBSTITUTE - "SHOULDER WORK AHEAD" SIGN FOR THE SECOND SIGN.
5. WORKER SIGNS OR SHOULDER WORK SIGNS AND CHANNELIZATION DEVICES ARE PLACED ONLY ON THE SIDE OF THE ROADWAY ON WHICH THE ACTIVITY IS PERFORMED.
6. FOR SHOULDER CLOSURE EXTENDING OVERNIGHT, BARRICADE TYPE II WITH STEADY BURNING LIGHT, TYPE C SHALL BE USED.
7. FOR SHORT TERM CLOSURE (SUNRISE TO ONE HOUR BEFORE SUNSET) NOT EXTENDING INTO DARKNESS, CONES MAY BE USED.
8. ONE WORK ZONE SPEED LIMIT SIGN ASSEMBLY (55 MPH - BEGINS) SHALL BE PLACED AT A DISTANCE OF 500' TO 2,500' MAXIMUM IN ADVANCE OF WORKERS THROUGHOUT THE SHOULDER CLOSURE. MOVING OPERATIONS MAY REQUIRE CONTINUOUS ADJUSTMENT OF THE SIGN ASSEMBLY LOCATION TO MAINTAIN THE ABOVE INTERVAL.
9. AN ADDITIONAL SIGN ASSEMBLY SHALL BE PLACED 500' BEYOND THE LAST ENTRANCE RAMP FOR EACH INTERCHANGE THAT FALLS WITHIN THE 2,500'.
10. THE SIGN ASSEMBLY SHALL BE PLACED NO CLOSER THAN 500' TO ANY OTHER SIGN.
11. THE SIGN ASSEMBLY SHALL NOT BE UTILIZED WHEN WORKERS ARE BEHIND A TEMPORARY (MOVABLE BARRIER) WALL.
12. THE WORK ZONE SPEED LIMIT SIGNS AND SIGN ASSEMBLY SHALL BE PROMPTLY REMOVED OR COVERED WHEN WORKERS ARE NOT PRESENT OR CLOSE TO MOVING TRAFFIC.
13. ALL CONFLICTING SPEED LIMIT SIGNS SHALL BE COVERED OR REMOVED.
14. "END WORK ZONE SPEED LIMIT" SIGNS SHALL BE IN PLACE ONLY WHEN THE EXISTING POSTED SPEED > 55MPH.
15. FOR SHOULDER REPAIRS OR REPLACEMENT THE CHANNELIZING DEVICES SHALL BE PLACED AT THE EDGE OF PAVEMENT WHENEVER THE WORK ACTIVITIES RESULT IN A DROPOFF AT THE EDGE OF PAVEMENT.

APPROVED *Jeff Riley*
CHIEF ENGINEER
DATE 5-28-2004

CTE ENGINEERS
CONSOER TOWNSEND ENVIRODYNE ENGINEERS, INC.

THE ILLINOIS STATE TOLL HIGHWAY AUTHORITY
2700 OGDEN AVENUE
DOWNERS GROVE, ILLINOIS 60515

REVISIONS		
NO.	DATE	DESCRIPTION
Δ	6/1/04	REVISED SHOULDER CLOSURE DETAIL
Δ	8/16/04	ADDED NOTE 15

STANDARD SD 04-20B
TEMPORARY GORE DETAILS AND SHOULDER CLOSURE DETAILS

DRAWING NO.
E11
OF