

STATE OF ILLINOIS
DEPARTMENT OF TRANSPORTATION

ROUTE NO.	SECTION	COUNTY	TOTAL SHEETS	SHEET NO.
S. B. I.	*	JoDaviess	7	2
F. A. I.				
FED. ROAD DIST. NO. 7	ILLINOIS	FED. AID PROJECT-		

* Section 102VBR-M CONTRACT NO. 64A87

TOTAL SUMMARY OF QUANTITIES – BRIDGE REPAIRS

GENERAL NOTES

CODE NUMBER	ITEM	SAFETY CODE		UNIT	TOTALS
		SFTY - 2A			
50300160	Neoprene Expansion Joint 4"	•		Foot	140
70102620	Traffic Control and Protection, Standard 701501	•		L. Sum	1
70102635	Traffic Control and Protection, Standard 701701	•		L. Sum	1
70102640	Traffic Control and Protection, Standard 701801	•		L. Sum	1
* X0301424	Silicone Joint Sealer	•		Foot	345
* X0321259	Polymer Modified Portland Cement Mortar	•		Cu. Ft.	55
* X0323648	Limestone Masonry Veneer	•		Sq. Ft.	60
* Z0022400	Fabric Reinforced Elastomeric Trough	•		Foot	137
Z0048665	Railroad Protective Liability Insurance	•		L. Sum	1
* X0324937	Stone Removal	•		Cu. Ft.	47
* X0324938	Limestone Replacement	•		Sq. Ft.	284
* X0324939	Anchor Rods	•		Each	160
67100100	MOBILIZATION	•		L SUM	1

* Specialty Items

See sheet 3 of 7 for additional general notes.

The contractor is responsible for all utility contacts prior to construction. Call J.U.L.I.E. at 1-800-892-0123.

The contractor is responsible for obtaining existing structure plans for all structures prior to construction or ordering materials. Plans are available by written request through the Illinois Department of Transportation, District 2, Bureau of Operations, 819 Depot Avenue, Dixon, Illinois 61021.

The structure will retain the same structure number.

After approval of initial submittal, the contractor shall submit one set of shop drawings to the Engineer of Materials, 126 Ash Street, Springfield, IL 62706, and eight (8) sets of shop drawings to be distributed to:

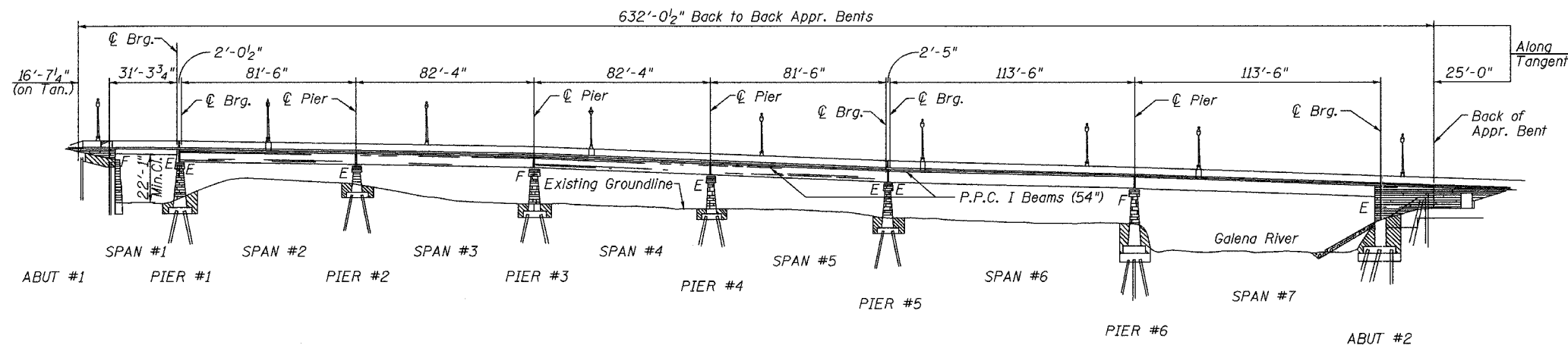
District 2 District Engineer (1)
Fabricator (1)
Contractor (2)
Resident Engineer (2)
District 2 Bureau of Materials (2)

SUMMARY OF QUANTITIES
F.A.P Route 301 (U.S. Route 20)
SECTION 102VBR-M
JoDAVIESS COUNTY
SN 043-0043

STATE OF ILLINOIS
DEPARTMENT OF TRANSPORTATION

ROUTE NO.	SECTION	COUNTY	SHEETS	SHEET
	*	Jo Daviess	7	3
FED. ROAD DIST. NO. 7	ILLINOIS	FED. AID PROJECT		

*(102VBR-M) CONTRACT #64A87



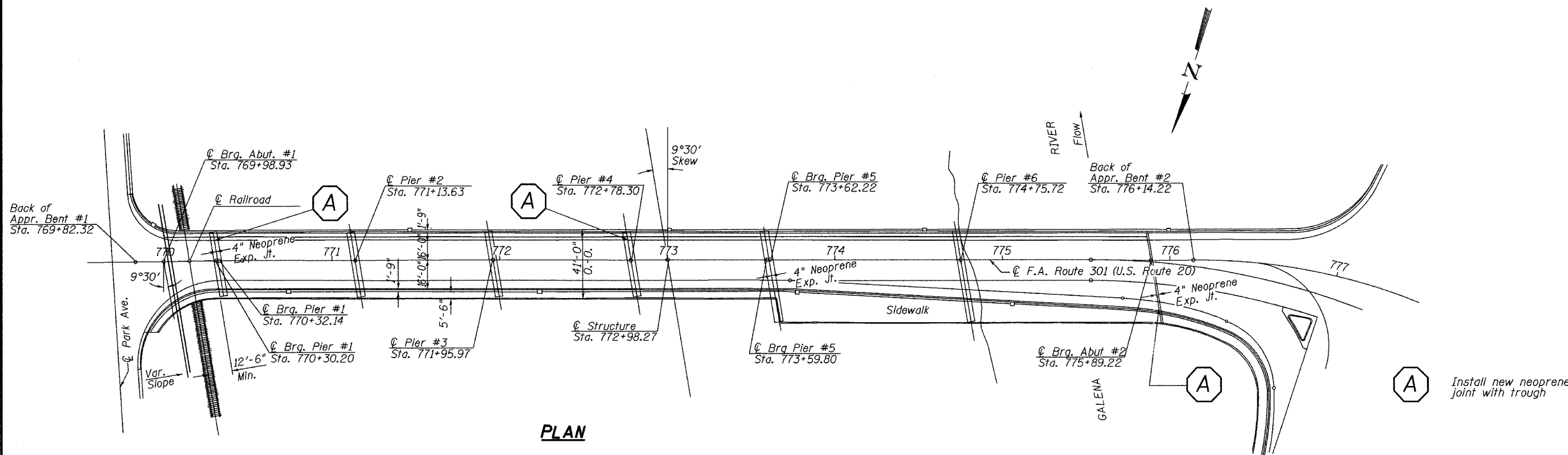
ELEVATION
(Looking South)

GENERAL NOTES

Plan dimensions and details relative to existing structures have been taken from existing plans and are subject to nominal construction variations. It shall be the Contractor's responsibility to verify such dimensions and details in the field and make necessary approved adjustments prior to construction or ordering of materials. Such variations shall not be cause for additional compensation for a change in the scope of work. However, the Contractor will be paid for the quantity actually furnished at the unit price bid for the work.

The existing structural steel coating contains lead. The contractor should take appropriate precautions to deal with the presence of lead on this project.

The structure will retain the same numbers 043-0043.

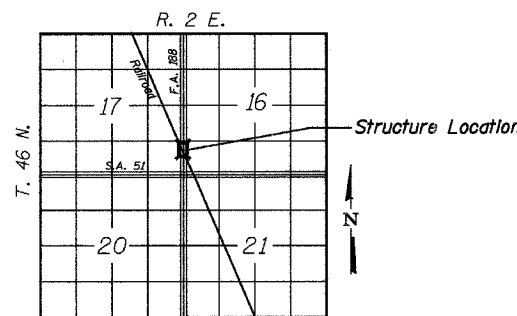


PLAN

TOTAL - BILL OF MATERIAL

ITEM	ITEM	UNIT	TOTAL
Neoprene Expansion Joint 4"		Foot	140
Railroad Protective Liability Insurance		L.Sum	1
Fabric Reinforced Elastomeric Trough		Foot	137
Silicone Joint Sealer		Foot	345
Polymer Modified Portland Cement Mortar		Cu. Ft.	55
Stone Removal		Cu. Ft.	47
Limestone Replacement		Sq. Ft.	284
Limestone Masonry Veneer		Sq. Ft.	60
Anchor Rods		Each	160

DESIGNED	SB, DP
CHECKED	SB
DRAWN	BH, BS
CHECKED	SB



LOCATION MAP



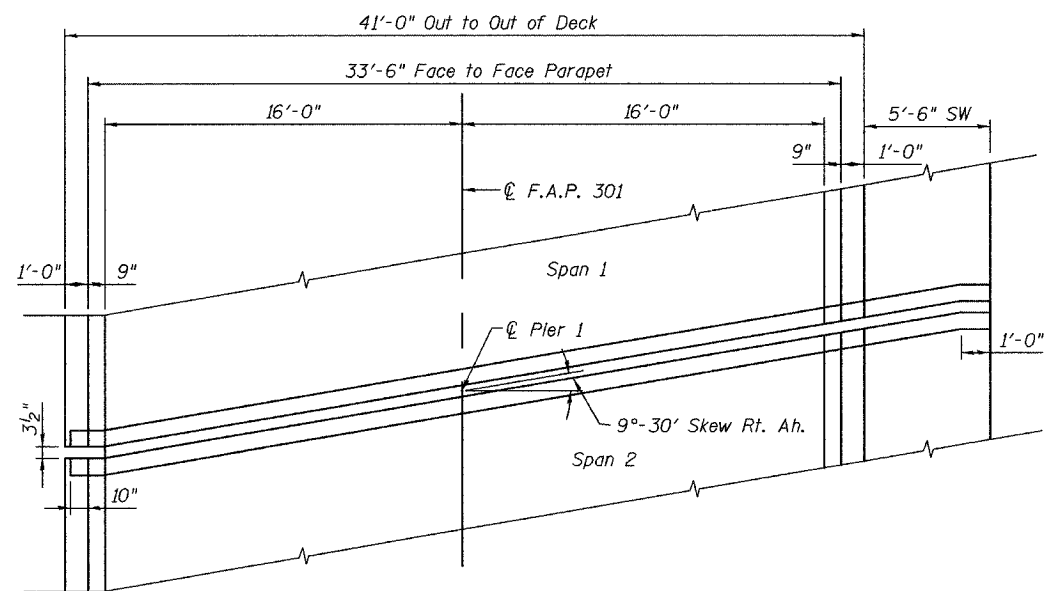
Scott Brown 03-01-05
LICENSE EXPIRES 11-30-2006

GENERAL PLAN AND ELEVATION
F.A.P. Route 301 (U.S. Route 20)
SECTION 102VBR-M
JO DAVIESS COUNTY
SN 043-0043

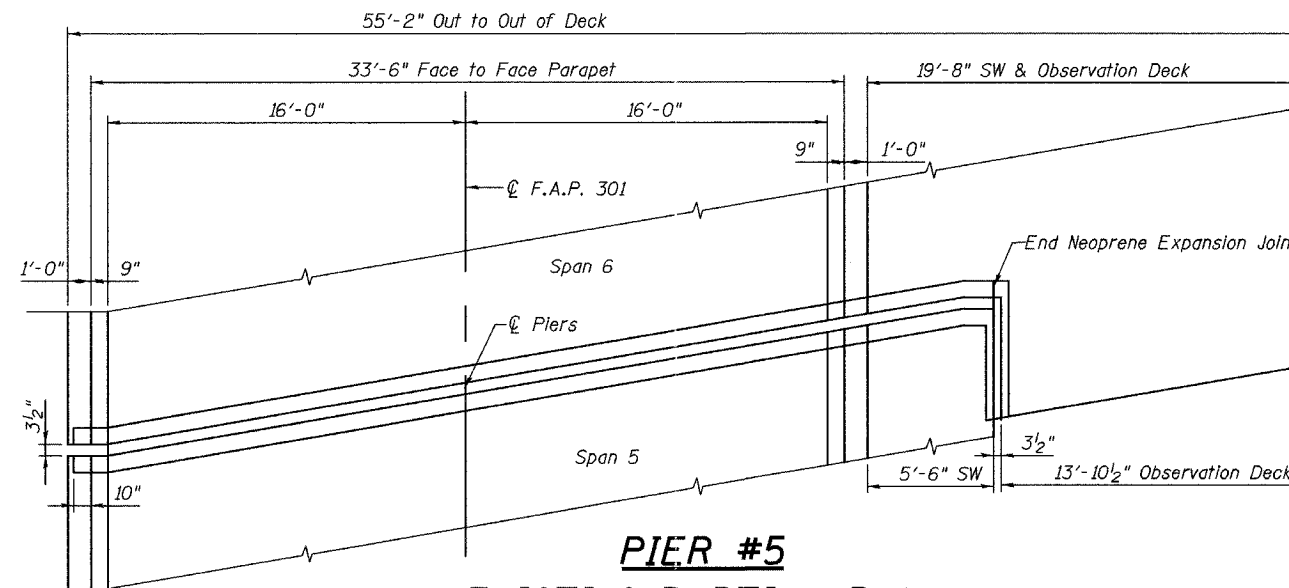
STATE OF ILLINOIS
DEPARTMENT OF TRANSPORTATION

ROUTE NO.	SECTION	COUNTY	SHEETS	SHEET
	*	JoDaviess	7	4
F.R.L.				
P.A.L.				
FED. ROAD DIST. NO. 7	ILLINOIS	FED. AID PROJECT		

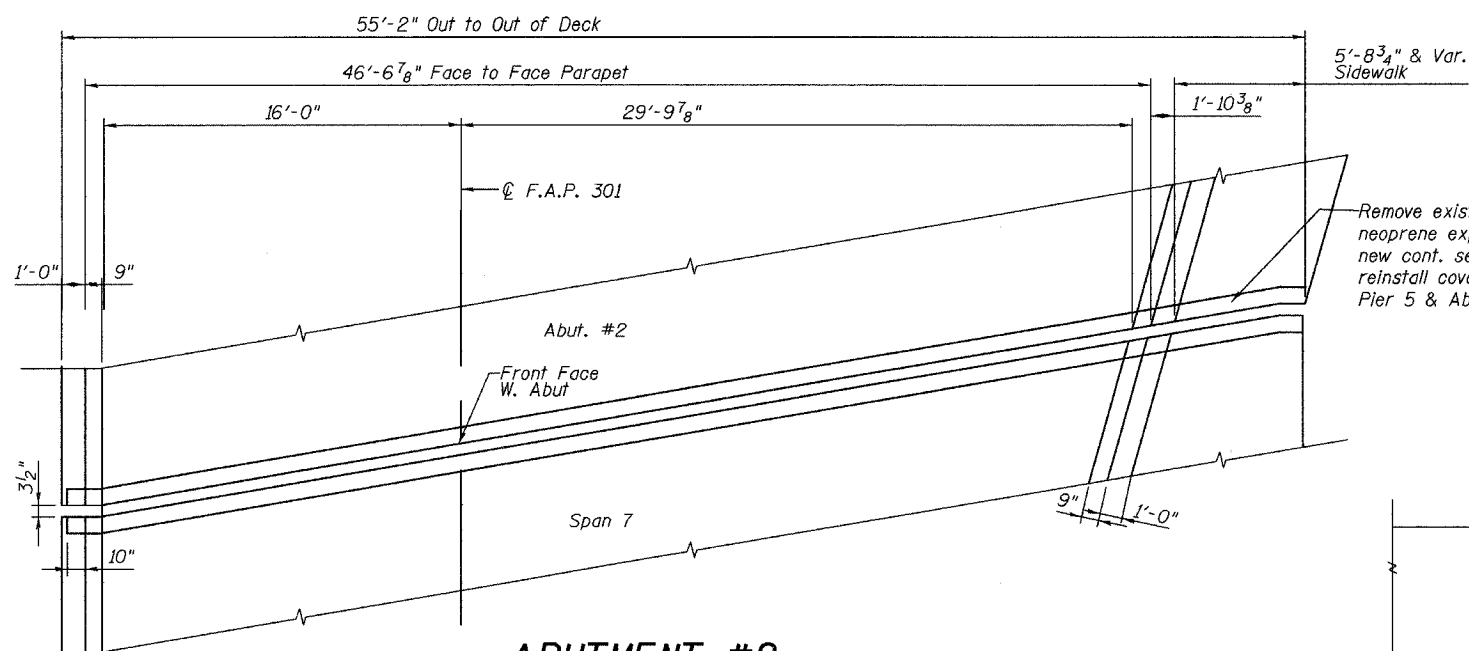
*(102VBR-M) CONTRACT #64A87



PIER #1
EXISTING PARTIAL PLAN
(FACING WEST)



PIER #5
EXISTING PARTIAL PLAN
(FACING WEST)



ABUTMENT #2
EXISTING PARTIAL PLAN
(FACING WEST)

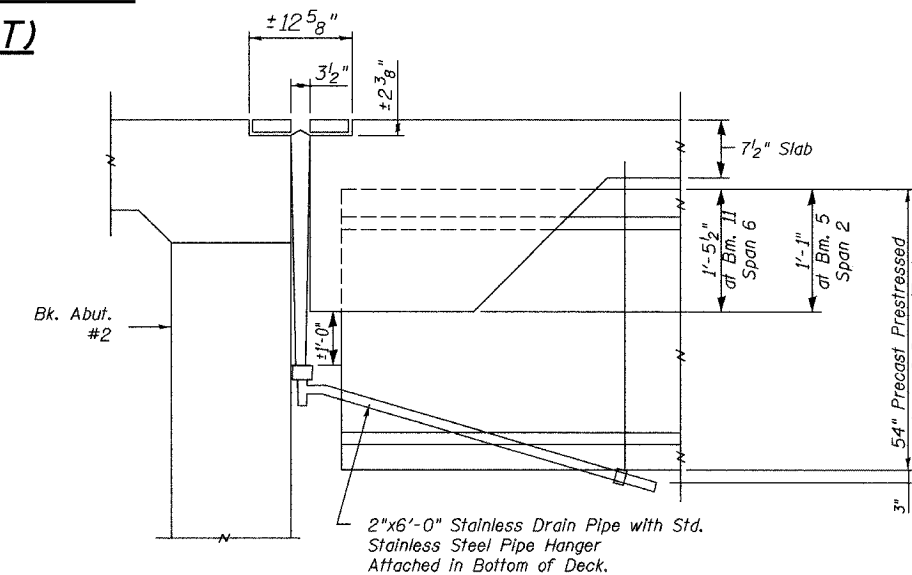
Remove exist. stainless steel cover plate and neoprene expansion joint on sidewalk. Install new cont. seal neoprene expansion joint and reinstall cover plate typ. at Pier 1, Pier 5 & Abutment #2

BILL OF MATERIAL - JOINTS

ITEM	UNIT	TOTAL
Neoprene Expansion Joint 4"	Foot	140
Fabric Reinforced Elastomeric Trough	Foot	137
* Silicone Joint Sealer	Foot	25

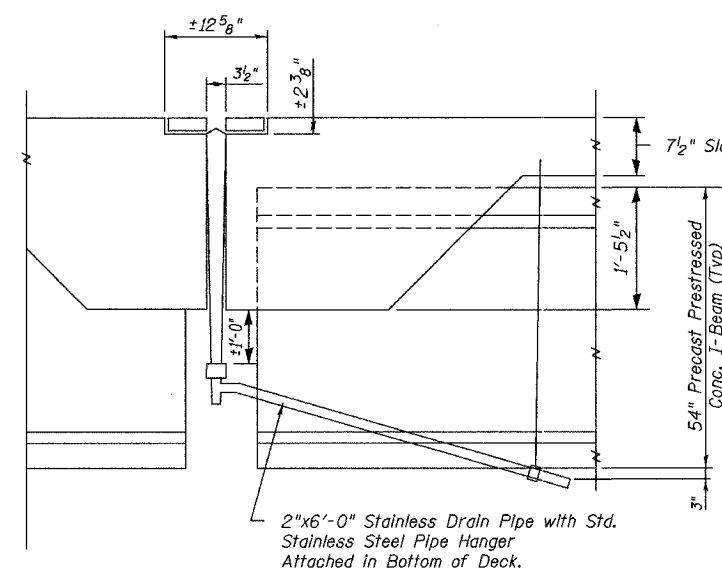
* See Sheet 7 of 7 for Location

DESIGNED	SB, DP
CHECKED	SB
DRAWN	BH, BS
CHECKED	SB



TYP. SEC. SHOWING DRAIN TROUGH @ ABUT. #2
(Pier 1 Similar)

Note: Cost of drain, pipe, and fittings considered included with Fabric Reinforced Elastomeric Trough



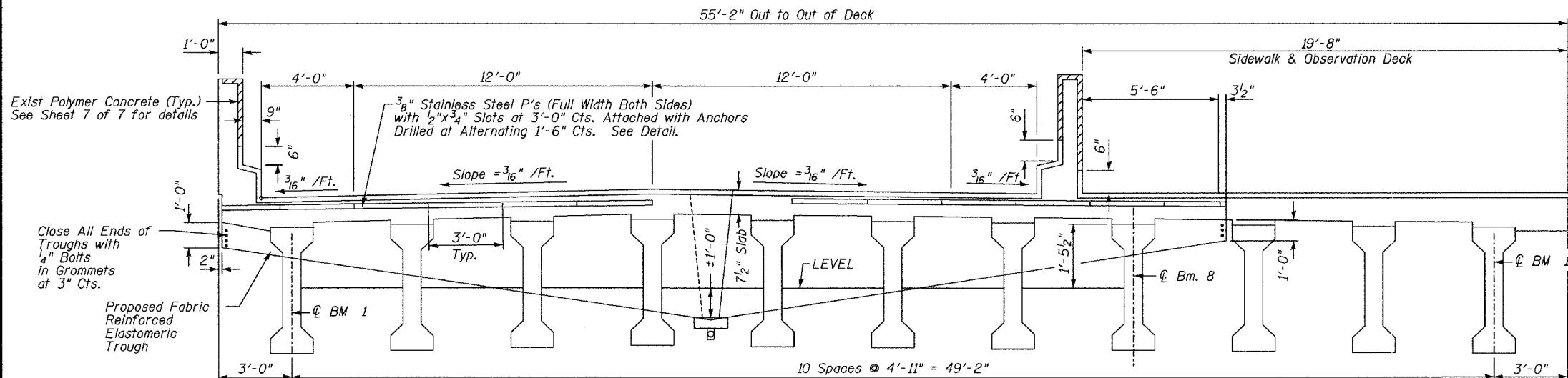
TYP. SEC. SHOWING DRAIN TROUGH @ PIERS

JOINT DETAILS
F.A.P Route 301 (U.S. Route 20)
SECTION 102VBR-M
JoDAVIESS COUNTY
SN 043-0043

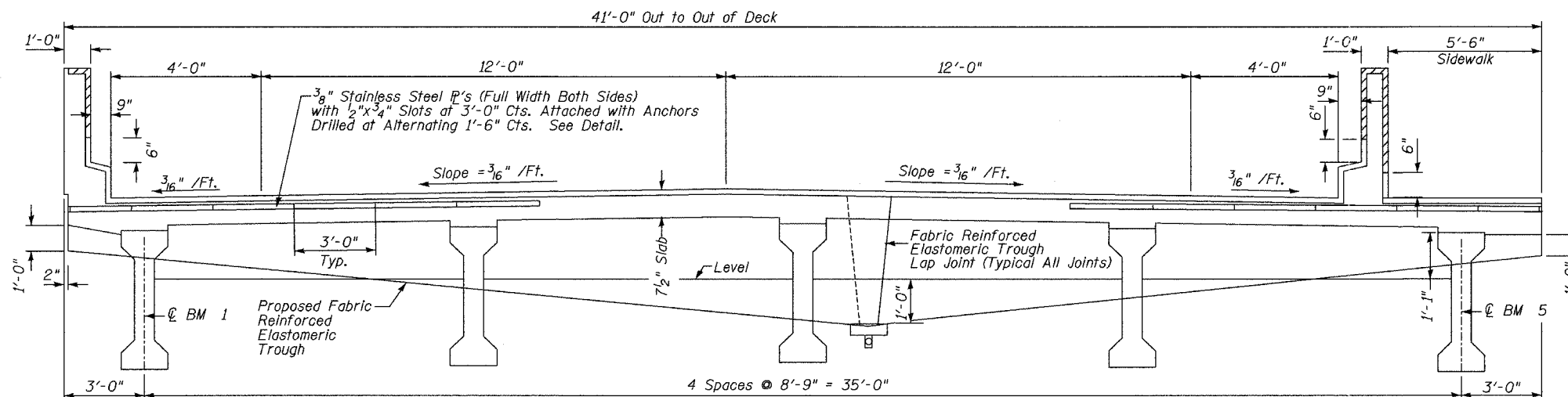
STATE OF ILLINOIS
DEPARTMENT OF TRANSPORTATION

ROUTE NO.	SECTION	COUNTY	TOTAL SHEETS	SHEET NO.
S.R.L.	*	Jo Daviess	7	5
F.A.L.				
FED. ROAD DIST. NO. 7	ILLINOIS	FED. AID PROJECT		

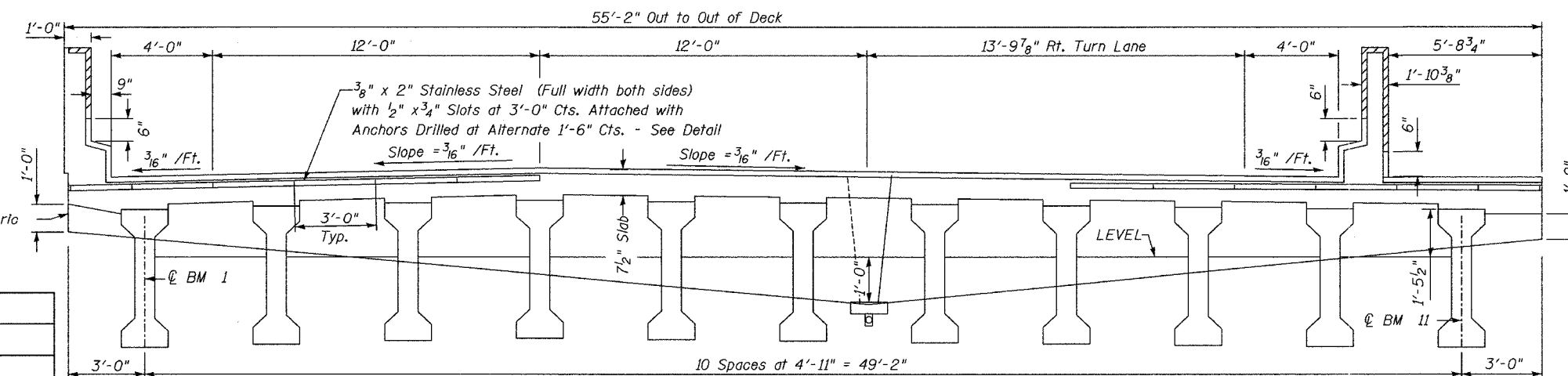
*(102VBR-M) CONTRACT #64A87



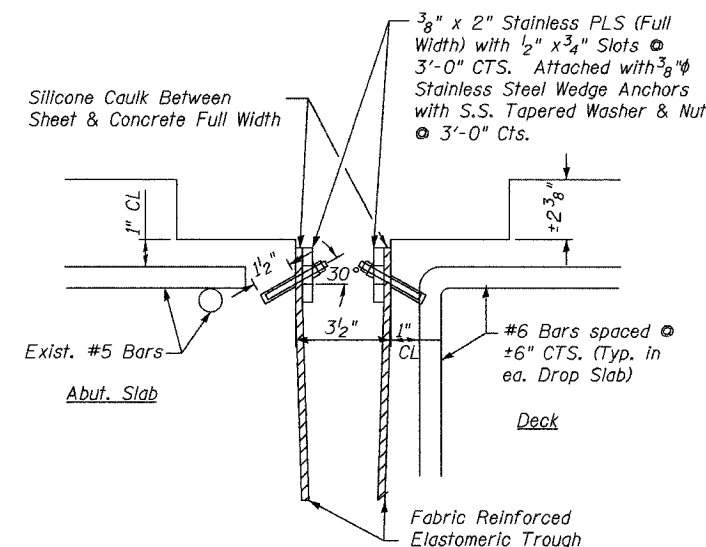
TYP. DECK CROSS SECTION AT PIER #2



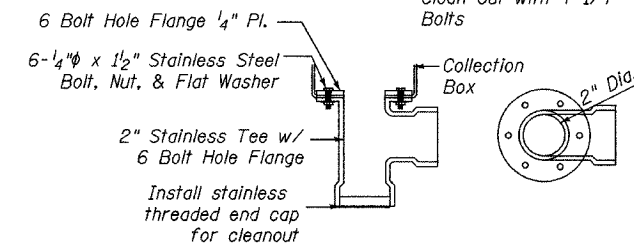
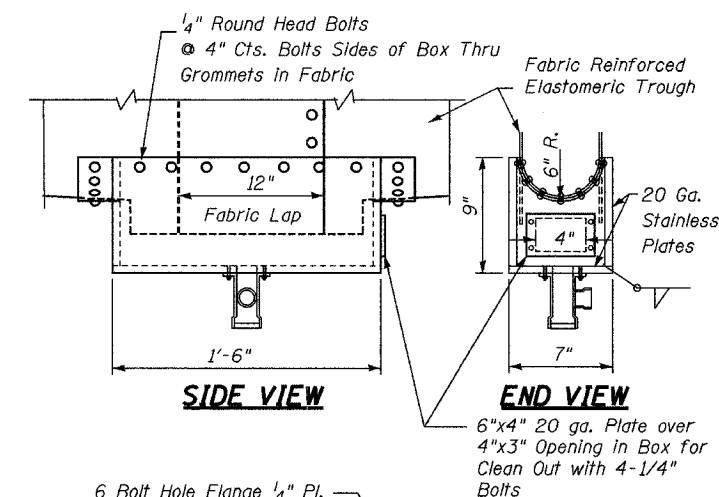
TYP. DECK CROSS SECTION AT PIER #1



TYP. DECK CROSS SECTION AT ABUTMENT #2



TYPICAL SECTION THRU EXP. JT.
(SHOWING DRAIN TROUGH ATTACHMENT)



TROUGH COLLECTION BOX
AND FITTING DETAIL

Note: Cost of collection box, drain, pipe, and fittings included with Fabric Reinforced Elastomeric Trough

DECK CROSS SECTIONS
F.A.P. Route 301 (U.S. Route 20)
SECTION 102VBR-M
JO DAVIESS COUNTY
SN 043-0043

DESIGNED	SB, DP
CHECKED	SB
DRAWN	BH, BS
CHECKED	SB

STATE OF ILLINOIS
DEPARTMENT OF TRANSPORTATION

ROUTE NO.	SECTION	COUNTY	SHEET NO.	SHEET
	*	Jo Daviess	7	7
F.A.P. No.		ILLINOIS FED. AID PROJECT		

* (102V-BR-M) CONTRACT #64A87

Joint Size	"C" at 50°F	"D" at 50°F
2"	2"	1 1/2" Min.
2 1/2"	2 1/2"	1 3/4" Min.
4"	3"	2 1/2" Min.

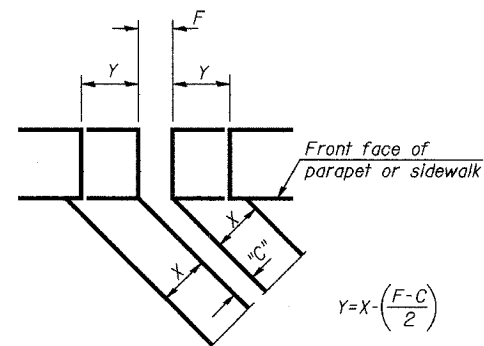
INSTALLATION NOTES

- Install continuous seal in roadway, parapet, curb, and sidewalk.
- Install anchor blocks as indicated.

Note A:
Maximum spacing of anchor bolts shall be 12" centers.

SKEW LIMITATIONS

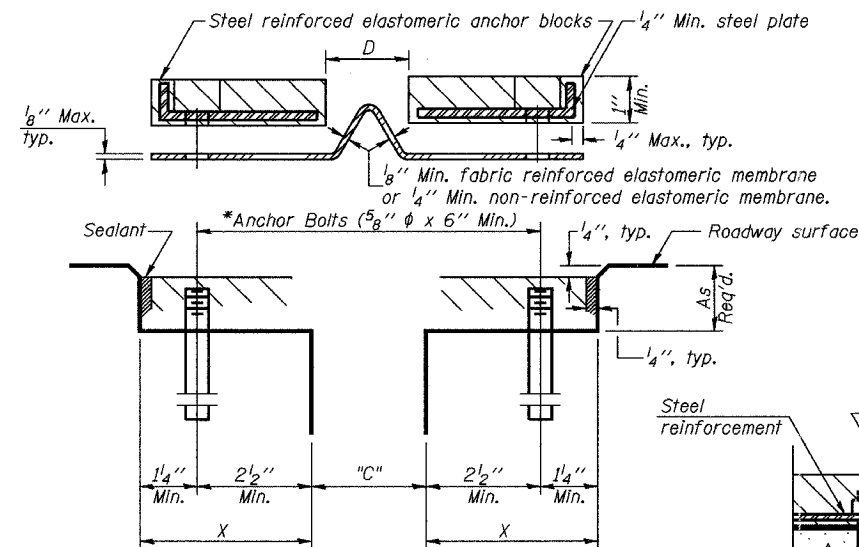
The details of the anchor blocks and the elastomeric membrane in the parapet, as shown, are for up to 50° skews. For skews greater than 50°, the anchor blocks and the elastomeric membrane, installed according to dimension "D", might require modifications to insure a minimum clearance of 1/2" from centerline of anchor studs to edge of parapet opening. The anchor blocks and the elastomeric membrane shall also be installed to the top of the parapet with the anchor studs spaced at ±12" cts.



$$Y = X - \left(\frac{F - C}{2} \right)$$

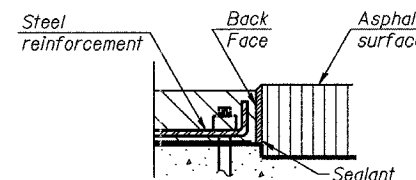
For dimension "F" see sheet #4 of 7

FORMING BLOCKOUT SKETCH

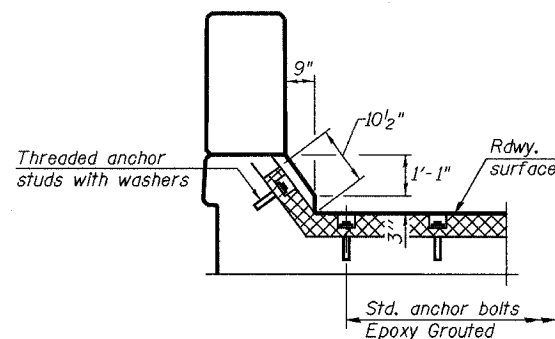


CROSS SECTION

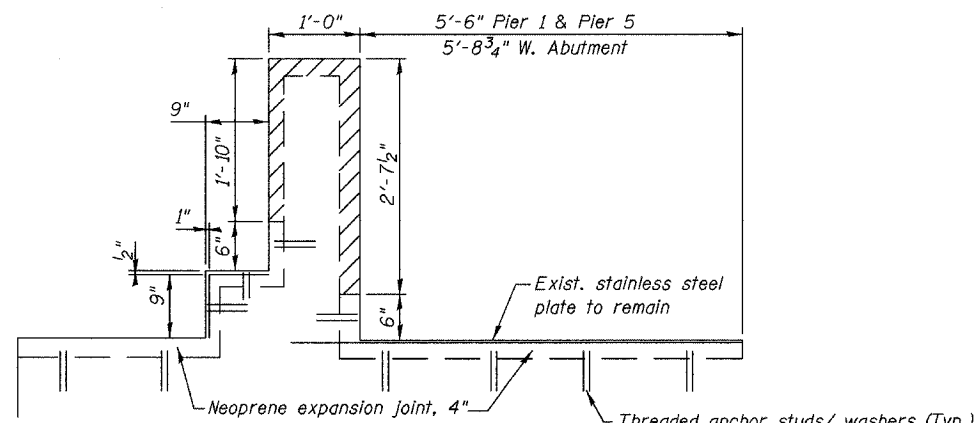
* Epoxy Grouted According to Section 584 of the Standard Specifications. Spacing to match hole spacing in new blocks. Cut off existing anchors and grind flush with concrete and seal with an approved epoxy sealant.



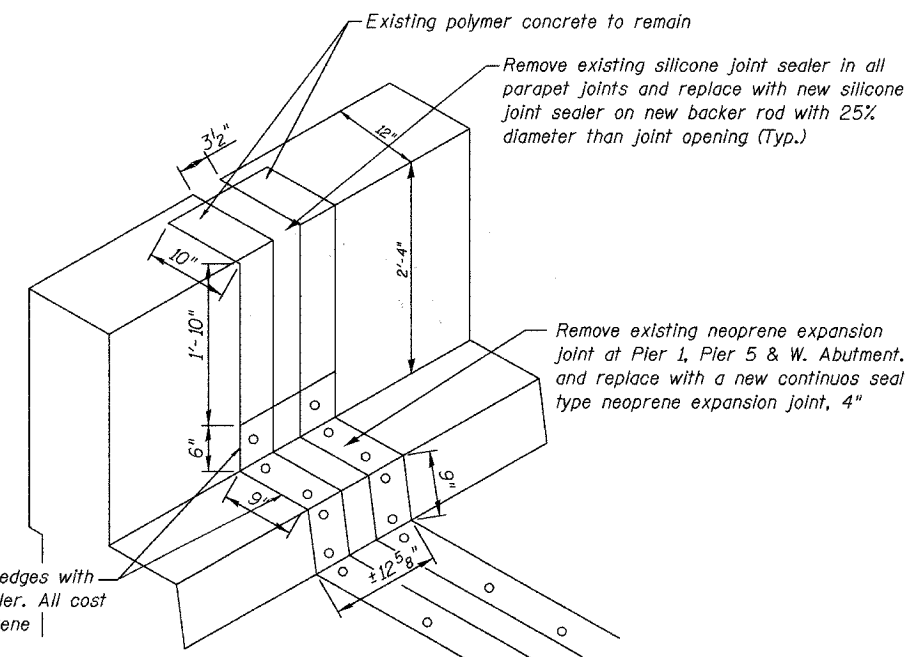
ANCHOR BLOCK WITH ASPHALT SURFACE



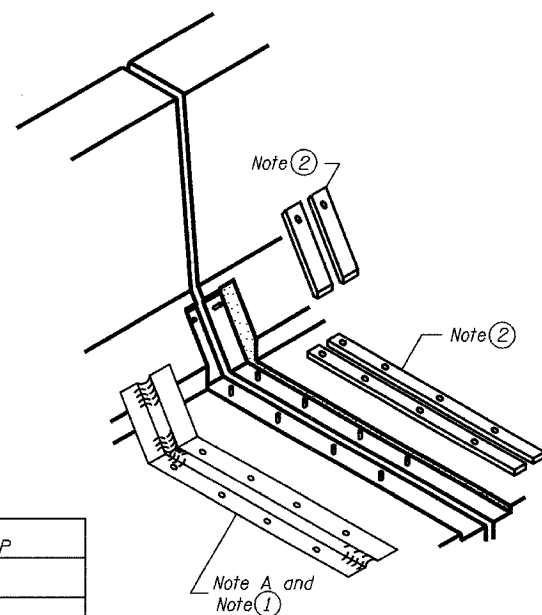
AT PARAPET



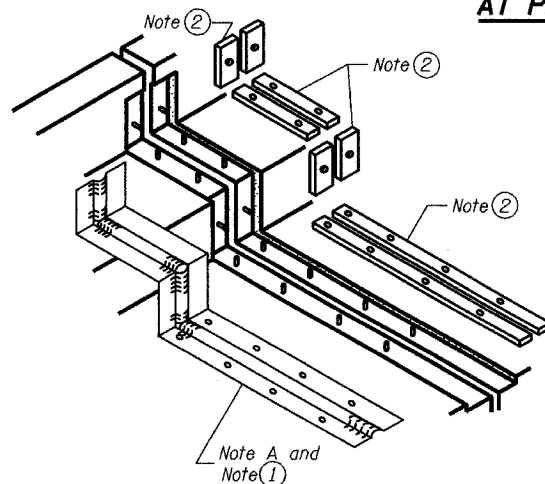
PROPOSED JOINT AT PARAPET & SIDEWALK



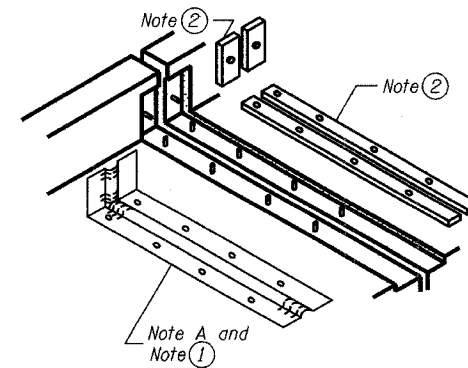
PROPOSED JOINT AT PARAPET



AT PARAPET



AT SIDEWALK OR MEDIAN



AT WALL

DESIGNED	SB, DP
CHECKED	SB
DRAWN	BH, BS
CHECKED	SB

CONTINUOUS SEAL TYPE
NEOPRENE EXPANSION JOINTS
F.A.P. Route 301 (US ROUTE 20)
SECTION 102VBR-M
JO DAVIESS COUNTY
SN 043-0043