

STATE OF ILLINOIS
DEPARTMENT OF TRANSPORTATION

ROUTE NO.	SECTION	COUNTY	SHEET	TOTAL SHEETS
F.A.I. 188	*	Winnebago	36	6
FED. ROAD DIST. NO. 7		ILLINOIS	FED. AID PROJECT	

TEMPORARY PAVEMENT MARKING - LINE 4" 70300220

Location	Color	Foot
LT. STA. 118+48 TO STA. 148+15	Yellow	2967
RT. STA. 129+98 TO RT. STA. 146+15	White	1617
		Total 4584 Foot

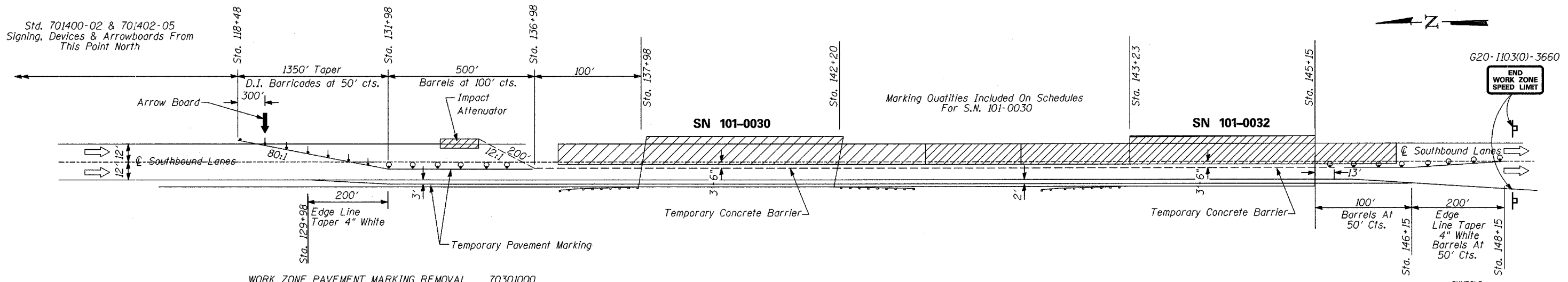
IMPACT ATTENUATORS (NON-REDIRECTIVE), TEST LEVEL 3 Z0030150

Location	Each
STA. 134+98	1
Total 1 Each	

PAVEMENT MARKING REMOVAL 78300105

Location	Color	Foot
RT. STA. 129+98 TO RT. STA. 146+15	White	1617
		Total 1617 Foot

*(5VB, 5HB, 1-2HB)M



WORK ZONE PAVEMENT MARKING REMOVAL 70301000

Location	Color	Sq. Ft.
LT. STA. 118+48 TO RT. STA. 136+98	Yellow	617
RT. STA. 129+98 TO RT. STA. 137+98	White	267
RT. STA. 142+20 TO RT. STA. 143+23	White	34
RT. STA. 145+15 TO RT. STA. 148+15	Yellow	100
RT. STA. 145+15 TO RT. STA. 146+15	White	33
		Total 1051 Sq. Ft.

STAGE I PLAN

PRINCIPAL TRAFFIC CONTROL STANDARDS:
701400-02 & 701402-05
NOT TO SCALE

TEMPORARY CONCRETE BARRIER 70400100

Location	Foot
STA. 134+98 TO STA. 145+15	1017
Total 1017 Foot	

- SYMBOLS
- Work area
 - Sign
 - Drum with steady burning light
 - Temporary concrete barrier

IMPACT ATTENUATORS, RELOCATE (NON-REDIRECTIVE), TEST LEVEL 3 Z0030350

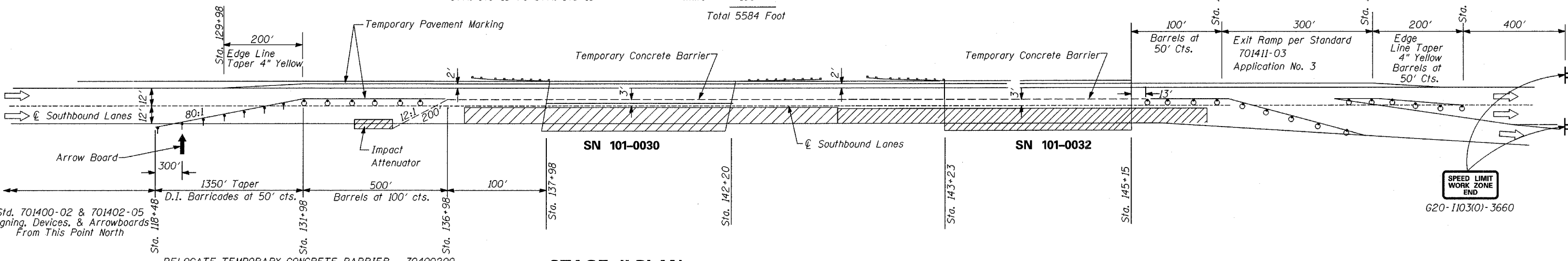
Location	Each
STA. 129+98	1
Total 1 Each	

TEMPORARY PAVEMENT MARKING - LINE 4" 70300220

Location	Color	Foot
LT. STA. 129+98 TO LT. STA. 151+15	Yellow	2117
RT. STA. 118+48 TO STA. 149+15	White	3067
STA. 148+15 TO STA. 151+15	White	300
STA. 148+15 TO STA. 149+15	White	100
		Total 5584 Foot

PAVEMENT MARKING REMOVAL 78300105

Location	Color	Foot
LT. STA. 129+98 TO LT. STA. 151+15	Yellow	2117
		Total 2117 Foot



RELOCATE TEMPORARY CONCRETE BARRIER 70400200

Location	Foot
STA. 134+98 TO STA. 145+15	1017
Total 1017 Foot	

STAGE II PLAN

PRINCIPAL TRAFFIC CONTROL STANDARDS:
701400-02 & 701402-05
NOT TO SCALE

PERMANENT PAVEMENT MARKING - LINE 4" 78007110

Location	Color	Foot
LT. STA. 129+98 TO LT. STA. 151+15	Yellow	2117
RT. STA. 129+98 TO RT. STA. 151+15	White	2117
STA. 136+98 TO STA. 151+15	White	1417
		Total 5651 Foot

WORK ZONE PAVEMENT MARKING REMOVAL 70301000

Location	Color	Sq. Ft.
LT. STA. 129+98 TO LT. STA. 151+15	Yellow	706
RT. STA. 118+48 TO STA. 149+15	White	1022
STA. 148+15 TO STA. 151+15	White	100
STA. 148+15 TO STA. 149+15	White	33
		Total 1861 Sq. Ft.

DESIGNED
CHECKED
DRAWN
CHECKED

TRAFFIC CONTROL PLAN
F.A.I. RTE. 303 & F.A.P. RTE 738
(IL 251) OVER RAILROAD
SECTION (5VB, 5HB, 1-2HB)M
WINNEBAGO COUNTY
SN 101-0030 & SN 101-0032