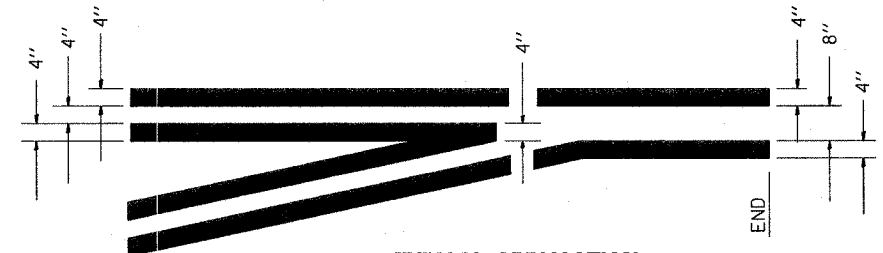
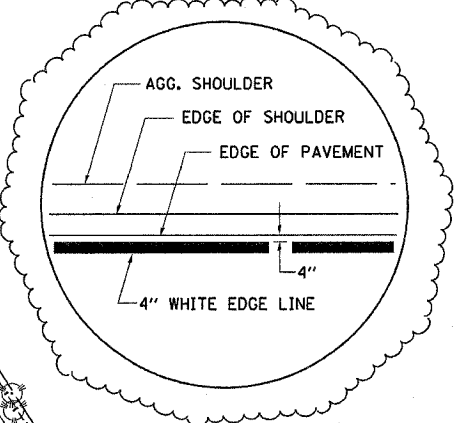
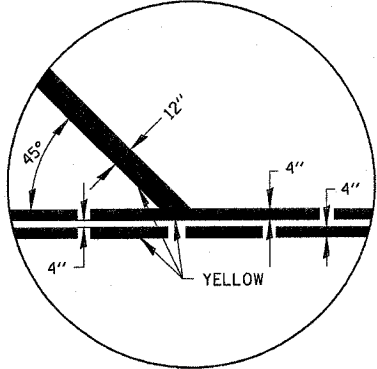
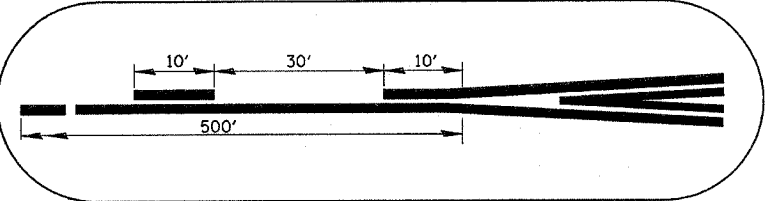


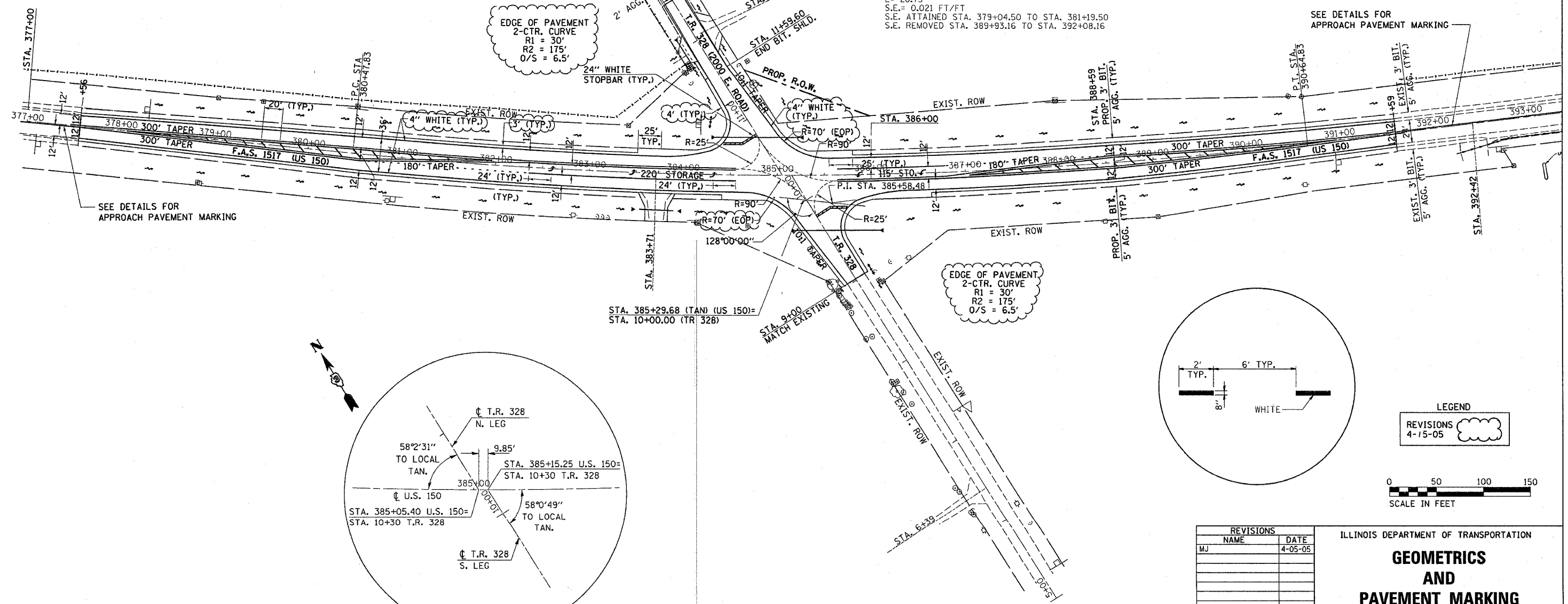
F.A.S. RTE.	SECTION	COUNTY	TOTAL SHEETS	SHEET NO.
1517	IN	MCLEAN	21	11
STA. TO STA.				
FED. ROAD DIST. NO.		ILLINOIS	FED. AID PROJECT	



**TYPICAL APPLICATION  
@ LEFT TURN LANES**

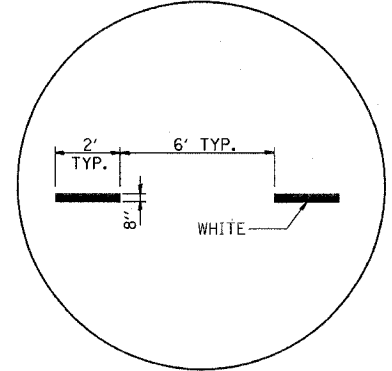
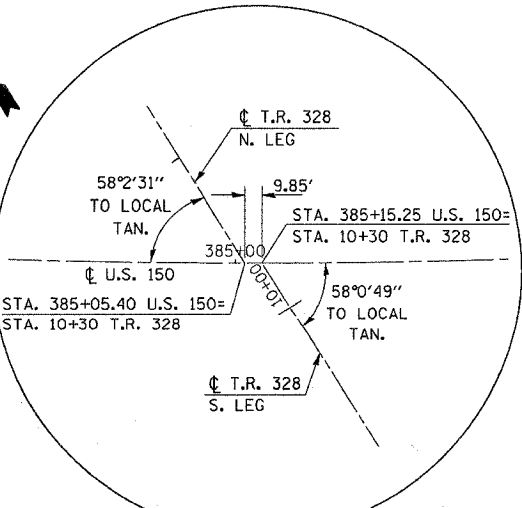


**EXISTING HORIZONTAL CURVE DATA**  
 P.I. STA= 385+58.48  
 P.C. STA= 380+47.83  
 P.T. STA= 390+64.83  
 $\Delta = 12^\circ 52' 55''$   
 T= 510.65'  
 R= 4523.35'  
 D= 1^\circ 16' 00''  
 L= 1017.00'  
 E= 28.73'  
 S.E.= 0.021 FT/FT  
 S.E. ATTAINED STA. 379+04.50 TO STA. 381+19.50  
 S.E. REMOVED STA. 389+93.16 TO STA. 392+08.16

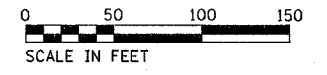


EDGE OF PAVEMENT  
 2-CENTR. CURVE  
 $R_1 = 30'$   
 $R_2 = 175'$   
 $O/S = 6.5'$

EDGE OF PAVEMENT  
 2-CENTR. CURVE  
 $R_1 = 30'$   
 $R_2 = 175'$   
 $O/S = 6.5'$



**LEGEND**  
 REVISIONS  
 4-15-05



REVISIONS		
NAME	DATE	
MJ	4-05-05	

ILLINOIS DEPARTMENT OF TRANSPORTATION  
**GEOMETRICS  
 AND  
 PAVEMENT MARKING**  
 SCALE: VERT. \_\_\_\_\_  
 HORIZ. \_\_\_\_\_  
 DATE \_\_\_\_\_  
 DRAWN BY \_\_\_\_\_  
 CHECKED BY \_\_\_\_\_

**REVISED 4-15-05 MJ**