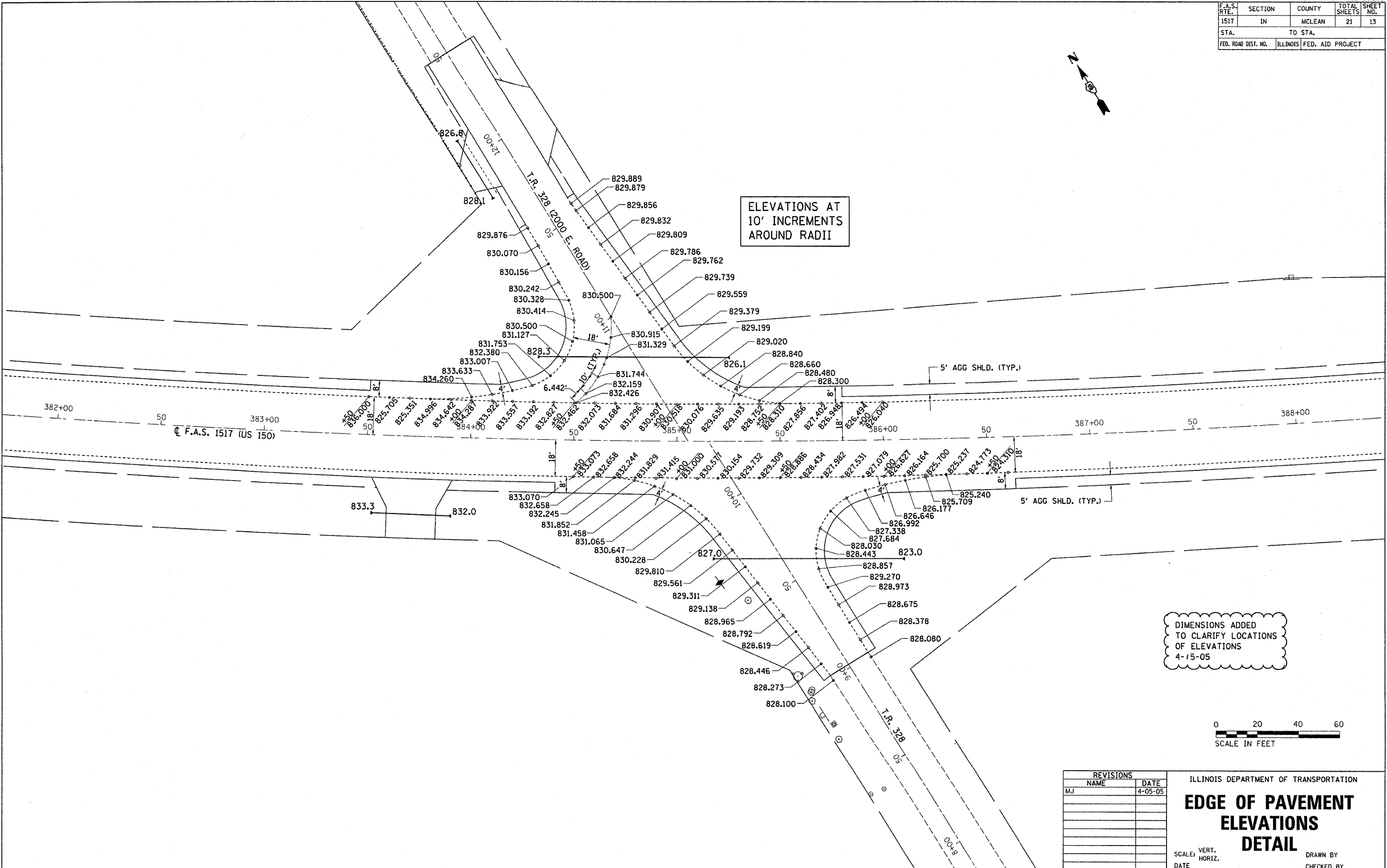


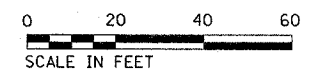
F.A.S. RTE.	SECTION	COUNTY	TOTAL SHEETS	SHEET NO.
1517	IN	MCLEAN	21	13
STA.		TO STA.		
FED. ROAD DIST. NO.		ILLINOIS FED. AID PROJECT		



ELEVATIONS AT 10' INCREMENTS AROUND RADII



DIMENSIONS ADDED TO CLARIFY LOCATIONS OF ELEVATIONS 4-15-05



REVISIONS	
NAME	DATE
MJ	4-05-05

ILLINOIS DEPARTMENT OF TRANSPORTATION

### EDGE OF PAVEMENT ELEVATIONS DETAIL

SCALE: VERT. HORIZ. DATE DRAWN BY CHECKED BY

REVISED 4-15-05 MJ