

F.A.S. RTE.	SECTION	COUNTY	TOTAL SHEETS	SHEET NO.
1517	IN	MCLEAN	21	3
STA.		TO STA.		
FED. ROAD DIST. NO.		ILLINOIS FED. AID PROJECT		

SUMMARY OF QUANTITIES

CODE NO.	CONSTRUCTION CODE TYPE: I000-1A	UNIT	TOTAL QUANTITY	90% FED. 10% STATE ROADWAY
				I000-1A
20100110	TREE REMOVAL (6 TO 15 UNITS DIAMETER)	UNIT	18	18
20100210	TREE REMOVAL (OVER 15 UNITS DIAMETER)	UNIT	18	18
20200100	EARTH EXCAVATION	CU YD	2535	2535
20800150	TRENCH BACKFILL	CU YD	55	55
25000200	SEEDING, CLASS 2	ACRE	2.0	2.0
25000400	NITROGEN FERTILIZER NUTRIENT	POUND	180	180
25000500	PHOSPHORUS FERTILIZER NUTRIENT	POUND	180	180
25000600	POTASSIUM FERTILIZER NUTRIENT	POUND	180	180
25100115	MULCH, METHOD 2	ACRE	0.75	0.75
25100401	EXCELSIOR BLANKET, SPECIAL	SO YD	1351	1351
25100630	EROSION CONTROL BLANKET	SO YD	3790	3790
25101005	HEAVY DUTY EXCELSIOR BLANKET	SO YD	1745	1745
28000250	TEMPORARY EROSION CONTROL SEEDING	POUND	400	400
28000300	TEMPORARY DITCH CHECKS	EACH	36	36
28000500	INLET AND PIPE PROTECTION	EACH	4	4
△ 31100300	SUB-BASE GRANULAR MATERIAL, TYPE A 4"	SO YD	3790	3790
40200800	AGGREGATE SURFACE COURSE, TYPE B	TON	74	74
40600100	BITUMINOUS MATERIALS (PRIME COAT)	GALLON	521	521
40600300	AGGREGATE (PRIME COAT)	TON	13	13
40600980	BITUMINOUS SURFACE REMOVAL - BUTT JOINT	SO YD	348	348
△ 44001430	BITUMINOUS SHOULDER REMOVAL	SQ YD	618	618
44300200	STRIP REFLECTIVE CRACK CONTROL TREATMENT	FOOT	2806	2806
48101200	AGGREGATE SHOULDERS, TYPE B	TON	463	463
△ 48202310	BITUMINOUS SHOULDERS SUPERPAVE 5 1/2"	SO YD	963	963
△ 48202410	BITUMINOUS SHOULDERS SUPERPAVE 6 1/2"	SO YD	217	217
50105200	REMOVE EXISTING CULVERTS	EACH	4	4
54200640	PIPE CULVERTS, TYPE I, CORRUGATED STEEL OR ALUMINUM CULVERT PIPE 15"	FOOT	36	36
54200643	PIPE CULVERTS, TYPE I, CORRUGATED STEEL OR ALUMINUM CULVERT PIPE 18"	FOOT	180	180
54213870	STEEL END SECTION 15"	EACH	2	2
54213873	STEEL END SECTIONS 18"	EACH	4	4
54200637	PIPE CULVERTS, TYPE 1, CORRUGATED STEEL OR ALUMINUM CULVERT PIPE 12"	FOOT	30	30
66700205	PERMANENT SURVEY MARKERS, TYPE I	EACH	2	2
54213867	STEEL END SECTIONS 12"	EACH	2	2
67000400	ENGINEER'S FIELD OFFICE, TYPE A	CAL MO	3	3
△ 66502400	WOVEN WIRE FENCE TO BE REMOVED AND RE-ERECTED	FOOT	30	30
67100100	MOBILIZATION	L SUM	1	1
70100460	TRAFFIC CONTROL AND PROTECTION, STANDARD 701306	L SUM	1	1
70100500	TRAFFIC CONTROL AND PROTECTION, STANDARD 701326	L SUM	1	1
70100600	TRAFFIC CONTROL AND PROTECTION, STANDARD 701336	L SUM	1	1
70101830	TRAFFIC CONTROL AND PROTECTION, STANDARD BLR 21	LSUM	1	1
70103815	TRAFFIC CONTROL SURVEILLANCE	CAL DA	35	35
70300100	SHORT-TERM PAVEMENT MARKING	FOOT	1202	1202

SUMMARY OF QUANTITIES

CODE NO.	CONSTRUCTION CODE TYPE: I000-1A	UNIT	TOTAL QUANTITY	90% FED. 10% STATE ROADWAY
				I000-1A
* 70300210	TEMPORARY PAVEMENT MARKING - LETTERS AND SYMBOLS	SO FT	78	78
* 70300220	TEMPORARY PAVEMENT MARKING - LINE 4"	FOOT	8680	8680
* 70300240	TEMPORARY PAVEMENT MARKING - LINE 6"	FOOT	330	330
* 70300250	TEMPORARY PAVEMENT MARKING - LINE 8"	FOOT	427	427
* 70300260	TEMPORARY PAVEMENT MARKING - LINE 12"	FOOT	278	278
* 70300280	TEMPORARY PAVEMENT MARKING - LINE 24"	FOOT	83	83
70301000	WORK ZONE PAVEMENT MARKING REMOVAL	SO FT	200	200
* 78000100	THERMOPLASTIC PAVEMENT MARKING - LETTERS AND SYMBOLS	SO FT	78	78
* 78000200	THERMOPLASTIC PAVEMENT MARKING - LINE 4"	FOOT	8680	8680
* 78000400	THERMOPLASTIC PAVEMENT MARKING - LINE 6"	FOOT	330	330
* 78000500	THERMOPLASTIC PAVEMENT MARKING - LINE 8"	FOOT	427	427
* 78000600	THERMOPLASTIC PAVEMENT MARKING - LINE 12"	FOOT	278	278
* 78000650	THERMOPLASTIC PAVEMENT MARKING - LINE 24"	FOOT	83	83
* 78100100	RAISED REFLECTIVE PAVEMENT MARKER	EACH	75	75
78300200	RAISED REFLECTIVE PAVEMENT MARKER REMOVAL	EACH	17	17
* 80500200	SERVICE INSTALLATION, TYPE B	EACH	2	2
* 80801500	WOOD POLE, 25 FT., CLASS 5	EACH	2	2
* 81012600	CONDUIT IN TRENCH, 2" DIA., PVC	FOOT	50	50
* 81021330	CONDUIT PUSHED, 2" DIA., PVC	FOOT	80	80
* 81100500	CONDUIT ATTACHED TO STRUCTURE, 1 1/2" DIA., GALVANIZED STEEL	FOOT	30.5	30.5
* 81500200	TRENCH AND BACKFILL FOR ELECTRICAL WORK	FOOT	50	50
* 85800100	FLASHER CONTROLLER	EACH	2	2
* 87301215	ELECTRIC CABLE IN CONDUIT, SIGNAL NO. 14 2C	FOOT	215	215
△ X3550215	BITUMINOUS BASE COURSE SUPERPAVE, 5 3/4"	SO YD	877	877
△ X3560144	BITUMINOUS CONCRETE BASE COURSE WIDENING, SUPERPAVE 10 1/2 INCH	SO YD	2320	2320
X4066426	BITUMINOUS CONCRETE SURFACE COURSE, SUPERPAVE, MIX "D", N70	TON	648	648
X4066770	LEVELING BINDER (MACHINE METHOD), SUPERPAVE N70	TON	398	398
* X8801100	SIGNAL HEAD, LED, POLYCARBONATE, 1-FACE, 1-SECTION, POST MOUNTED	EACH	2	2
X4420460	CLASS D PATCHES, TYPE II, 4 3/4 INCH	SO YD	26	26
△ X3560095	BITUMINOUS CONCRETE BASE COURSE WIDENING, SUPERPAVE, 5 3/4 INCH	SO YD	308	308

* SPECIALTY ITEMS

△ REVISED 4-15-05

REVISIONS	
NAME	DATE

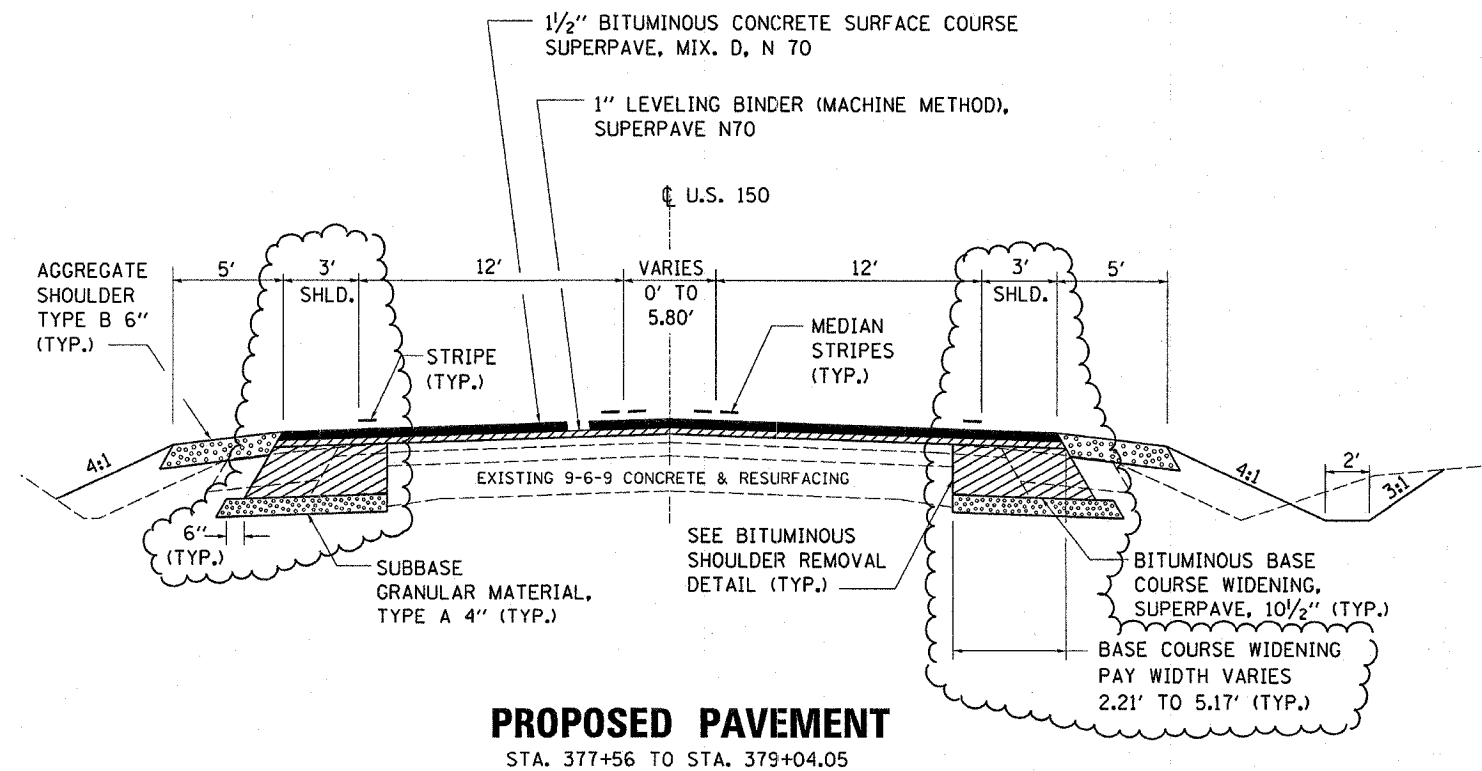
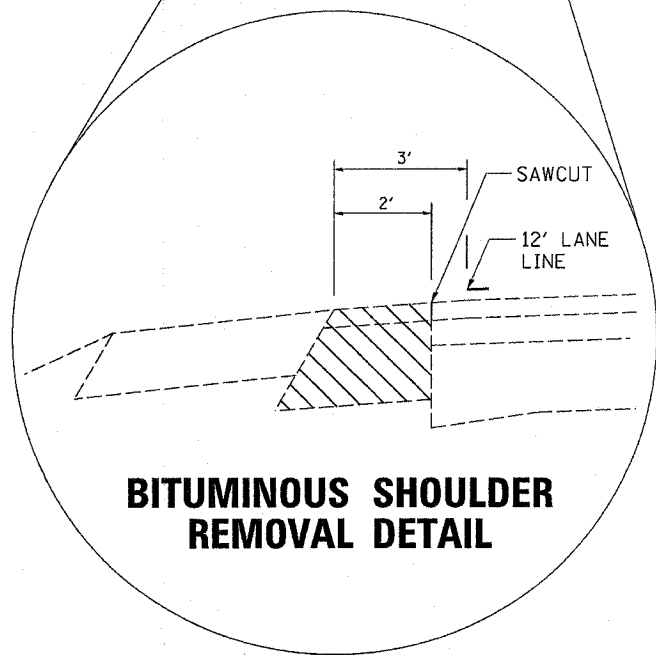
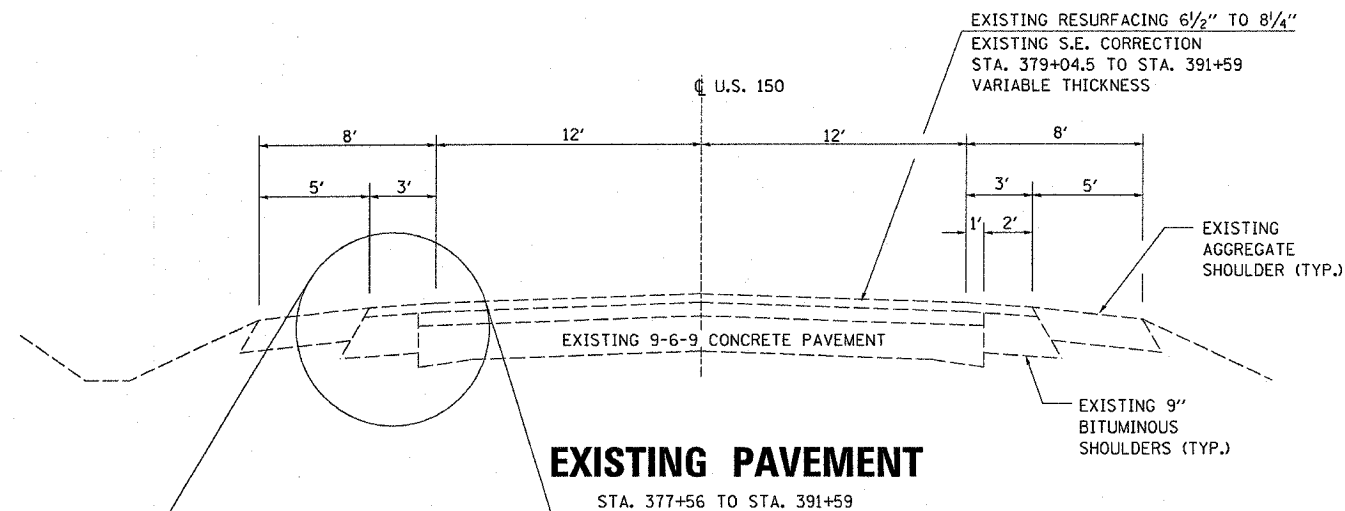
ILLINOIS DEPARTMENT OF TRANSPORTATION

SUMMARY OF QUANTITIES

SCALE: VERT. HORIZ.
DATE: DRAWN BY: CHECKED BY:

PLT DATE: 12/14/2004
FILE NAME: *WFL1*
PLOT SCALE: *SCALE*
REFERENCE: *REF*

F.A.S. RTE.	SECTION	COUNTY	TOTAL SHEETS	SHEET NO.
1517	IN	MCLEAN	21	4
STA.		TO STA.		
FED. ROAD DIST. NO.		ILLINOIS	FED. AID PROJECT	

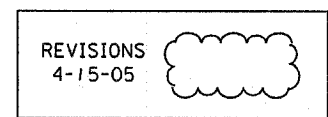


MIX	AC/PG GRADE	MAXIMUM % RAP*	DESIGN AIR VOIDS	MIXTURE COMPOSITION	PLANT CONTROL LIMITS	FRICTION AGGREGATE	DENSITY TEST METHOD
LEVEL BINDER	PG64-22	15%	4.0% @ N70	IL 9.5	CLASS I		SATISFACTION OF THE ENGINEER
BINDER COURSE							
SURFACE COURSE	PG64-22	10%	4.0% @ N70	IL 12.5 OR IL 9.5	CLASS I	MIXTURE D	CORES
PATCHING	PG64-22	25%	4.0% @ N50	IL 19.0	CLASS I		CORES
BASE COURSE AND WIDENING	PG64-22	25%	4.0% @ N50	IL 19.0	CLASS I		CORES
STABILIZED SUBBASE							

* IF RAP OPTION IS SELECTED, THE ASPHALT CEMENT GRADE MAY NEED TO BE ADJUSTED. THIS WILL BE DETERMINED BY THE ENGINEER.

** MATERIAL SHALL BE COMPACTED TO 93-97 PERCENT OF THE MAXIMUM THEORETICAL DENSITY, EXCEPT THAT THE BOTTOM LIFT SHALL BE COMPACTED TO A MINIMUM OF 91.0 PERCENT. THE MAXIMUM THEORETICAL DENSITY SHALL BE DETERMINED FROM THE MOVING AVERAGE AS SPECIFIED IN THE QC/QA SPECIFICATION.

LEGEND



REVISIONS	
NAME	DATE
MJ	4-05-05

ILLINOIS DEPARTMENT OF TRANSPORTATION

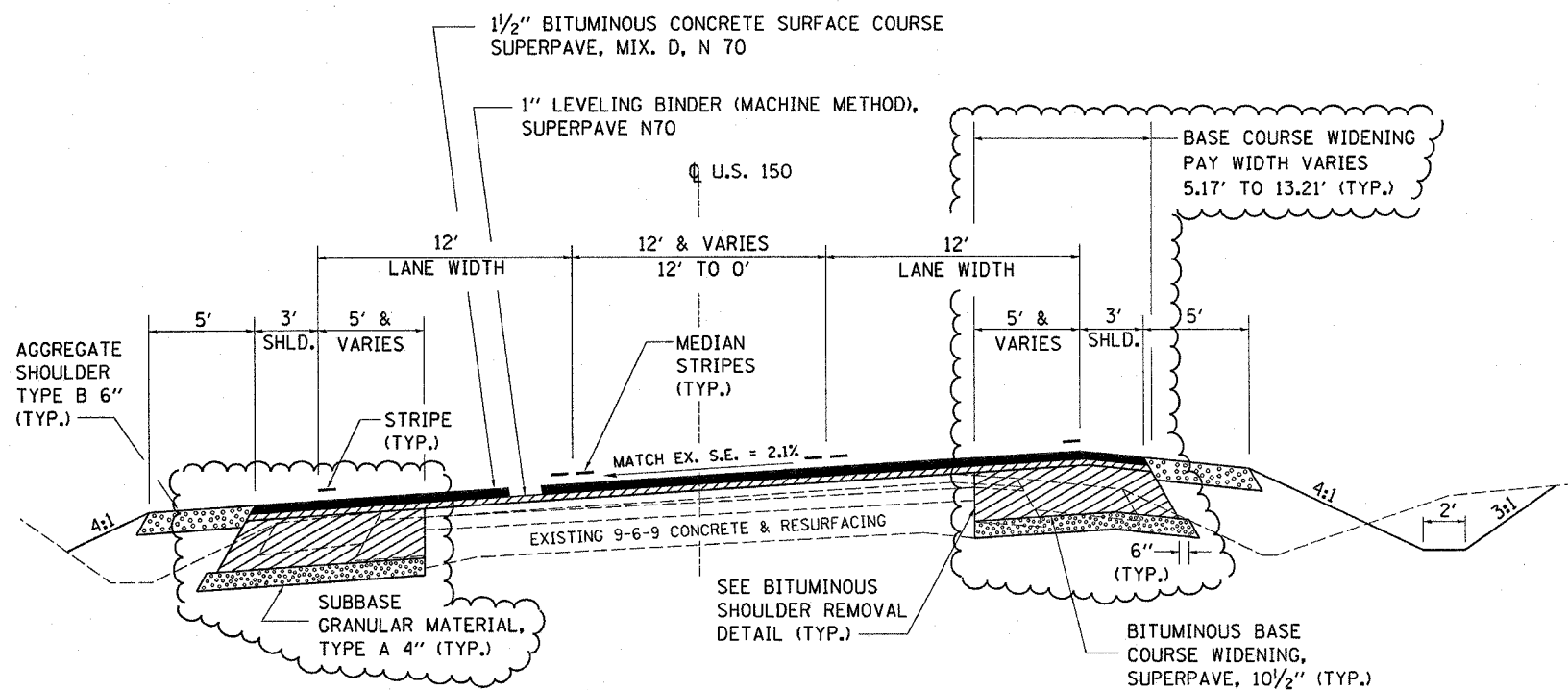
TYPICALS

SCALE: VERT. HORIZ.
DATE

DRAWN BY
CHECKED BY

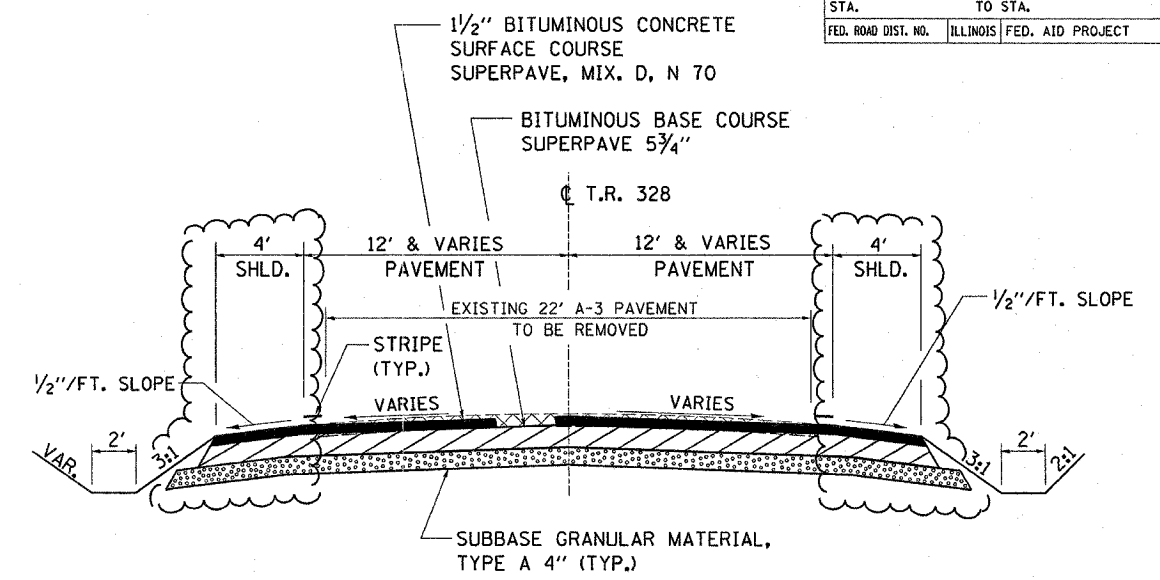
REVISED 4-15-05 MJ

F.A.S. RTE.	SECTION	COUNTY	TOTAL SHEETS	SHEET NO.
1517	IN	MCLEAN	21	5
STA. TO STA.		FED. ROAD DIST. NO. ILLINOIS FED. AID PROJECT		

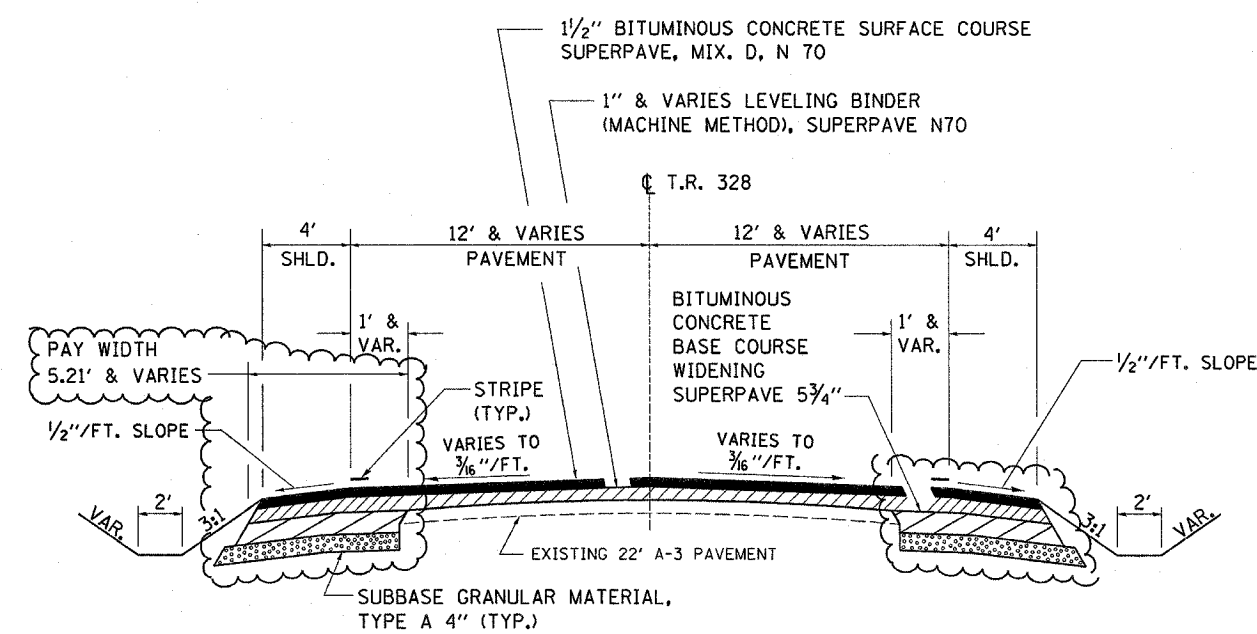


PROPOSED PAVEMENT
STA. 379+04.05 TO STA. 391+59

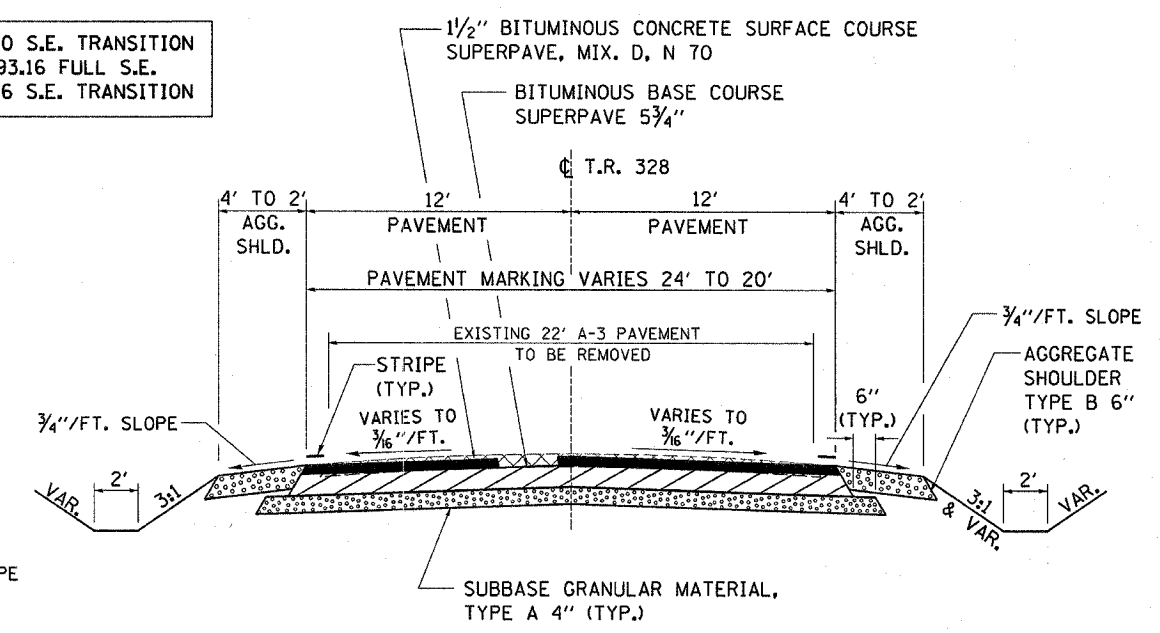
STA. 379+04.05 TO STA. 381+19.50 S.E. TRANSITION
STA. 381+19.50 TO STA. 389+93.16 FULL S.E.
STA. 389+93.16 TO STA. 392+08.16 S.E. TRANSITION



PROPOSED SIDEROAD T.R. 328
T.R. 328 NORTHBOUND STA. 10+51.25 TO STA. 11+59.60



PROPOSED SIDEROAD T.R. 328
T.R. 328 SOUTHBOUND STA. 9+00 TO STA. 10+08.79



PROPOSED SIDEROAD T.R. 328
T.R. 328 NORTHBOUND STA. 11+59.60 TO STA. 12+50

LEGEND

REVISIONS	4-15-05	
-----------	---------	--

REVISIONS	
NAME	DATE
MJ	4-05-05

ILLINOIS DEPARTMENT OF TRANSPORTATION

TYPICALS

SCALE: VERT. HORIZ.
DATE DRAWN BY CHECKED BY

REVISED 4-15-05 MJ

F.A.S. RTE.	SECTION	COUNTY	TOTAL SHEETS	SHEET NO.
1517	IN	MCLEAN	21	6
STA.		TO STA.		
FED. ROAD DIST. NO.		ILLINOIS FED. AID PROJECT		

RESURFACING SCHEDULE

LOCATION	BITUMINOUS MATERIALS (PRIME COAT) (GALLON)	AGGREGATE (PRIME COAT) (TON)	LEVELING BINDER (MACHINE METHOD), SUPERPAVE N70 (TON)	BITUMINOUS CONCRETE SURFACE COURSE, SUPERPAVE, MIX "D" N 70 (TON)	BITUMINOUS SURFACE REMOVAL-BUTT JOINT (SQ YDS)	AGGREGATE SHOULDERS, TYPE B (TONS)	BITUMINOUS BASE COURSE SUPERPAVE, 5 3/4" (SQ YD)
U.S. 150 WEST LEG	223	5	185	276	174	234	0
U.S. 150 EAST LEG	195	5	161	243	174	208	0
T.R. 328 NORTH LEG	42	1	6	75	0	21	877
T.R. 328 SOUTH LEG	61	2	46	54	0	0	0
TOTALS	521	13	398	648	348	463	877

LEGEND

REVISIONS 4-15-05

PIPE CULVERT REMOVAL SCHEDULE

LOCATION STATION	REMOVE EXISTING CULVERTS (EACH)	TRENCH BACKFILL (CU YD)	REMARKS
T.R. 328 9+83.3 2.6' LT	1	13.3	18 INCH CMP, 65 FEET
T.R. 328 10+70.7 2.6 LT	1	10.5	18 INCH CMP, 66 FEET
T.R. 328 11+95.3 14.6 LT	1		15 INCH CMP, 33 FEET
U.S. 150 383+78.6 30.7 RT	1		15 INCH CMP, 54 FEET
TOTAL	4	* 23.8	

* SUBTOTAL

WIDENING SCHEDULE

LOCATION STA TO STA	SUB-BASE GRANULAR MATERIAL, TYPE A 4" (SQ YD)	STRIP REFLECTIVE CRACK CONTROL TREATMENT (FOOT)	BITUMINOUS CONCRETE BASE COURSE WIDENING, SUPERPAVE, 5 3/4" (SQ YD)	BITUMINOUS CONCRETE BASE COURSE WIDENING, SUPERPAVE, 10 1/2" (SQ YD)
U.S. 150 WEST LEG	1259	1506	0	1237
U.S. 150 EAST LEG	1148	1300	0	1083
T.R. 328 SOUTH LEG	402	0	203	0
T.R. 328 NORTH LEG	981	0	105	0
TOTAL	3790	2806	308	2320

TREE REMOVAL SCHEDULE

LOCATION STA TO STA	TREE REMOVAL 6 TO 15 UNITS DIAMETER UNIT	TREE REMOVAL OVER 15 UNITS DIAMETER UNIT
U.S. 150 385+28/78 RT	11	
U.S. 150 385+28/78 RT	7	
U.S. 150 385+53/115 RT		18
TOTAL	18	18

EROSION CONTROL SCHEDULE

LOCATION STA TO STA	HEAVY DUTY EXCELSIOR BLANKET (SQ YD)	EXCELSIOR BLANKET, SPECIAL (SQ YD)	EROSION CONTROL BLANKET (SQ YD)	INLET AND PIPE PROTECTION (EACH)	TEMPORARY DITCH CHECKS (EACH)
U.S. 150 WEST LEG	0	0	3063	1	18
U.S. 150 EAST LEG	1745	1351	0	0	18
T.R. 328 SOUTH LEG	0	0	482	1	0
T.R. 328 NORTH LEG	0	0	245	2	0
TOTAL	1745	1351	3790	4	36

ENTRANCE SCHEDULE

LOCATION STATION	AGGREGATE SURFACE COURSE TYPE B (TONS)
U.S. 150 383+71.3/30.6RT	38
T.R. 328 11+95/LT	18
T.R. 328 12+08/RT	18
TOTAL	74

EARTH EXCAVATION

LOCATION STA TO STA	1 DISTANCE (FEET)	2 EARTH EXCAVATION (CU YD)	3 EARTH EXCAVATION ADJUSTED FOR SHRINKAGE (CU YD)	4 EMBANKMENT (CU YD)	5 EARTHWORK BALANCE WASTE (+) OR SHORTAGE (-) (CU YD)
U.S. 150 377+50 TO 385+00	750	842	632	632	0
U.S. 150 385+50 TO 392+00	650	859	644	574	70
T.R. 328 8+50 TO 10+00	150	191	143	1	142
T.R. 328 11+00 TO 13+00	200	643	482	0	482
TOTAL	1750	2535	1901	1207	695

COLUMN 4 = EARTH EXCAVATION ADJUSTED USING SHRINKAGE FACTOR OF 25%

SEEDING SCHEDULE

LOCATION U.S. 150 STA 377+56 TO STA 391+59	SEEDING CLASS 2 (ACRE)	NITROGEN FERTILIZER NUTRIENT (POUND)	PHOSPHORUS FERTILIZER NUTRIENT (POUND)	POTASSIUM FERTILIZER NUTRIENT (POUND)	MULCH METHOD 2 (ACRE)	TEMPORARY EROSION CONTROL SEEDING (POUND)
TOTALS	2.00	180	180	180	0.75	400

PIPE CULVERT SCHEDULE

LOCATION STATION	PIPE CULVERTS, TYPE 1, CORR. STEEL OR ALUM. CULVERT PIPE 12" (FOOT)	STEEL END SECTIONS 12" (EACH)	PIPE CULVERTS, TYPE 1, CORR. STEEL OR ALUM. CULVERT PIPE 15" (FOOT)	STEEL END SECTIONS 15" (EACH)	PIPE CULVERTS, TYPE 1, CORR. STEEL OR ALUM. CULVERT PIPE 18" (FOOT)	STEEL END SECTIONS 18" (EACH)	TRENCH BACKFILL (CU YD)
T.R. 328 11+95, LT	28	2					
T.R. 328 10+82, CL					90	2	20.6
T.R. 328 9+62, CL					90	2	10.9
U.S. 150 383+71, 40' RT			36	2			
TOTAL	28	2	36	2	180	4	* 31.5

* SUBTOTAL

PAVEMENT MARKING SCHEDULE

LOCATION STA TO STA	THERMOPLASTIC MARKING SCHEDULE							RAISED REFLECTIVE PAVEMENT MARKER (EACH)	RAISED REFLECTIVE PAVEMENT MARKER REMOVAL (EACH)
	LETTERS AND SYMBOLS WHITE (SQ FT)	LINE 4 INCH YELLOW (FOOT)	LINE 4 INCH WHITE (FOOT)	LINE 6 INCH WHITE (FOOT)	LINE 8 INCH WHITE (FOOT)	LINE 12 INCH WHITE (FOOT)	LINE 24 INCH WHITE (FOOT)		
T.R. 328 9+80 RT							43		
T.R. 328 10+70 LT							40		
T.R. 328 9+00 TO 12+50			630	80					
U.S. 150 377+56 TO 381+10						130			
U.S. 150 377+56 TO 391+59	78	5398	2652	250				75	17
U.S. 150 380+58 TO 384+58					266				
U.S. 150 386+60 TO 389+55					161				
U.S. 150 387+10 TO 391+59						148			
SUBTOTALS	78	5398	3282	330	427	278	83	75	17
TOTALS	78	8680	330	427	278	83	75	17	17

PATCHING SCHEDULE

LOCATION STATION	CLASS D PATCHES TYPE II 4 3/4" (SQ YD)
U.S. 150 385+50, 40' RT	5
U.S. 150 385+50, 40' RT	5
U.S. 150 385+50, 58' RT	8
U.S. 150 385+50, 58' RT	8
TOTAL	26

SHORT TERM MARKING AND WORK ZONE PAVEMENT MARKING REMOVAL

LOCATION STA TO STA	SHORT TERM PAVEMENT MARKING (FOOT)	WORK ZONE PAVEMENT MARKING REMOVAL (SQ FT)
U.S. 150 377+56 TO 391+59	1146	191
T.R. 328 10+80 TO 12+50	34	6
T.R. 328 9+00 TO 10+07.5	22	3
TOTAL	1202	200

PERMANENT SURVEY MARKERS TYPE I

LOCATION STATION	PC	PT
380+47.83	1	
390+64.83		1
TOTAL	1	1

REVISIONS	
NAME	DATE
MJ	4-05-05

ILLINOIS DEPARTMENT OF TRANSPORTATION

SCHEDULES

SCALE: VERT. HORIZ. DATE

DRAWN BY CHECKED BY

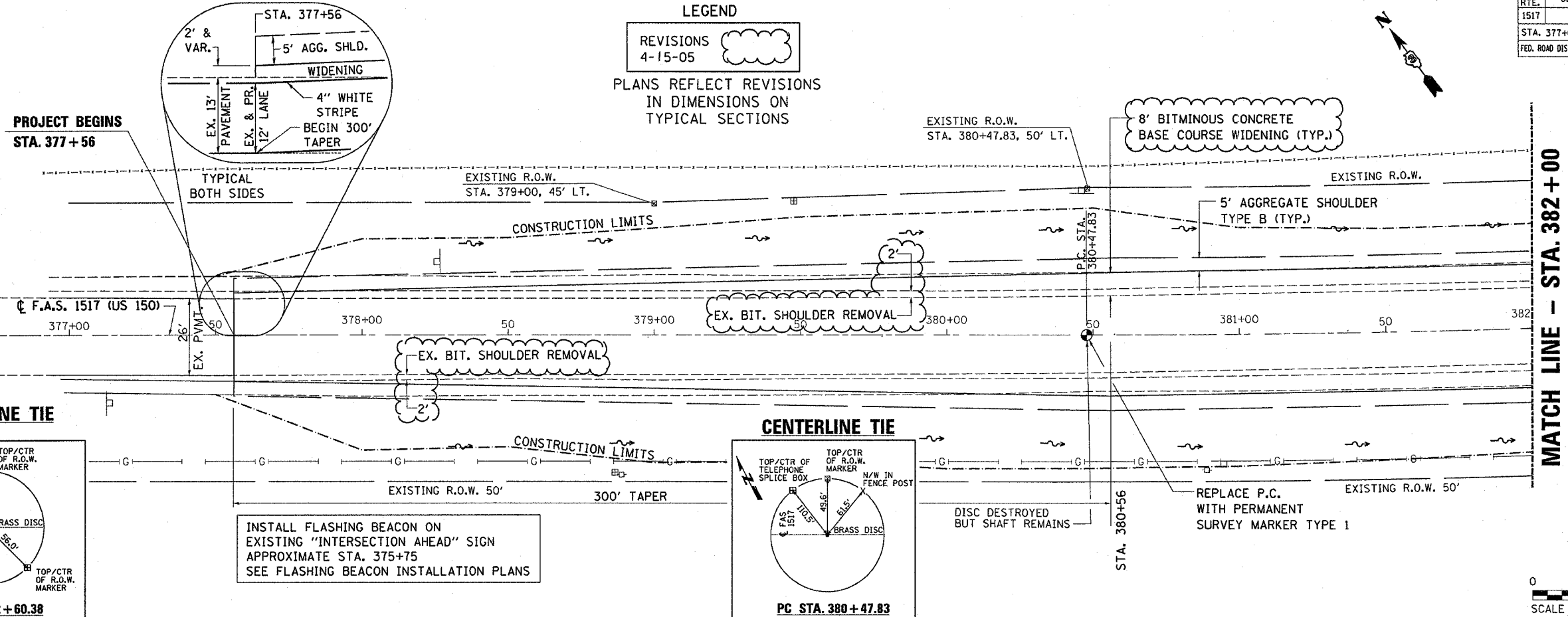
REVISED 4-15-05 MJ

F.A.S. RTE.	SECTION	COUNTY	TOTAL SHEETS	SHEET NO.
1517	1N	MCLEAN	20	7
STA. 377+00		TO STA. 382+00		
FED. ROAD DIST. NO.		ILLINOIS	FED. AID PROJECT	

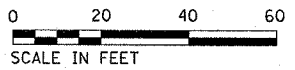
LEGEND

REVISIONS
4-15-05

PLANS REFLECT REVISIONS
IN DIMENSIONS ON
TYPICAL SECTIONS



MATCH LINE - STA. 382+00

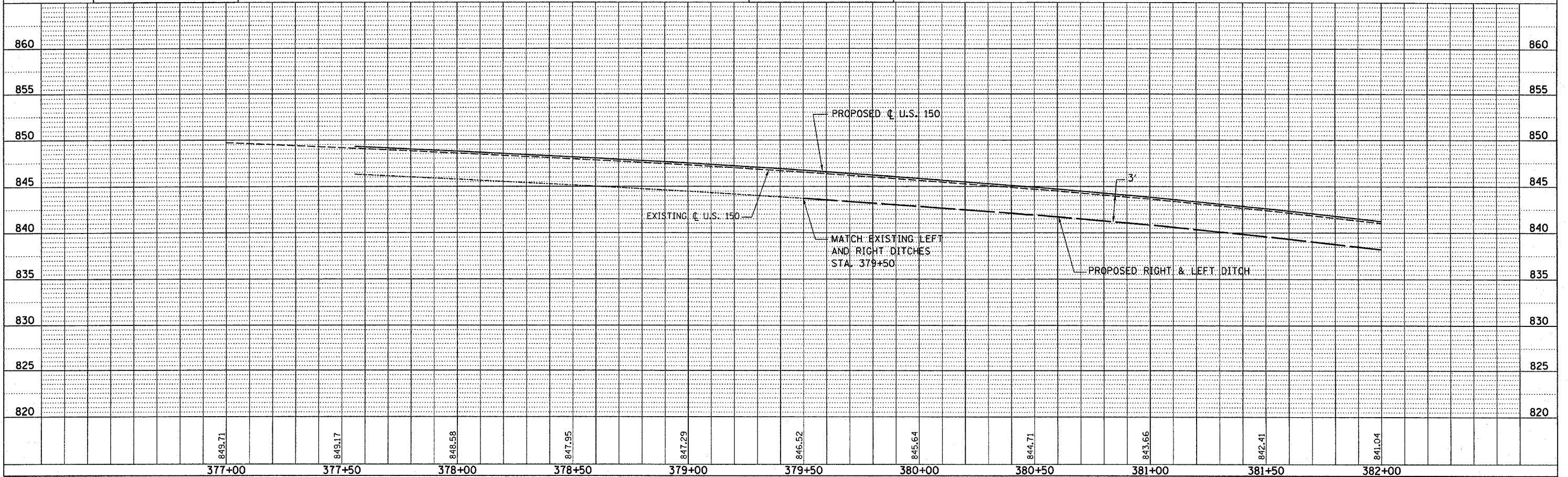


PLAN

DATE	
BY	
DESIGNED	
CHECKED	
PLOTTED	
FILED	

PROFILE

DATE	
BY	
DESIGNED	
CHECKED	
PLOTTED	
FILED	



F.A.S. RTE.	SECTION	COUNTY	TOTAL SHEETS	SHEET NO.
1517	IN	MCLEAN	20	8
STA. 382+00		TO STA. 388+00		
FED. ROAD DIST. NO.		ILLINOIS FED. AID PROJECT		

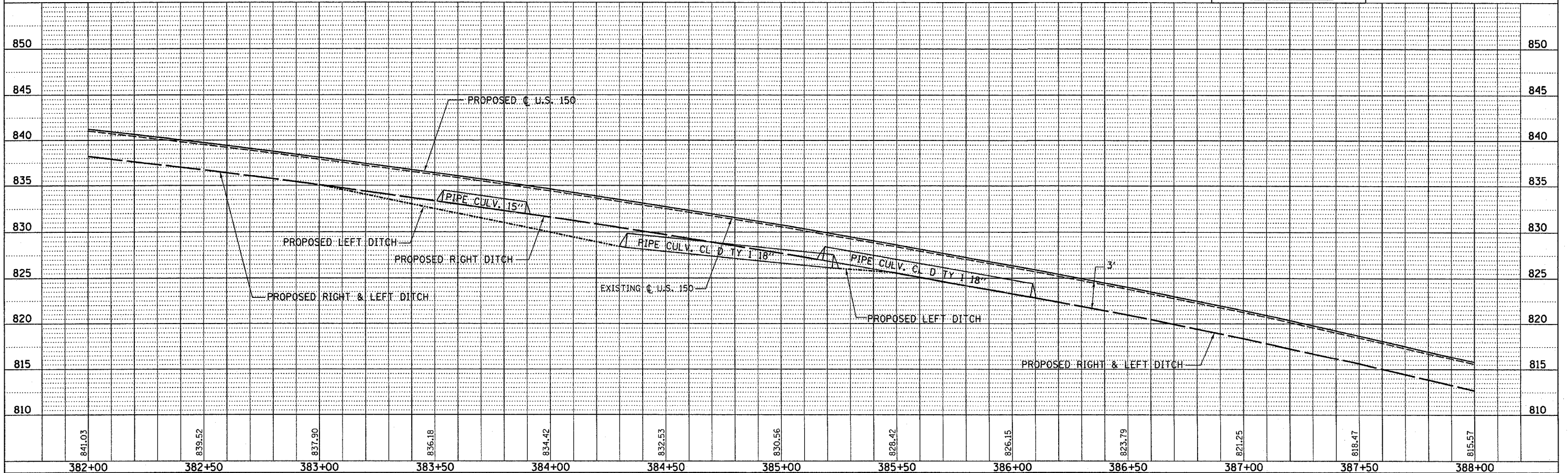
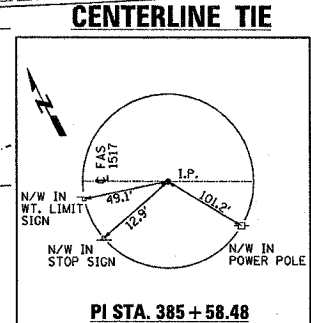
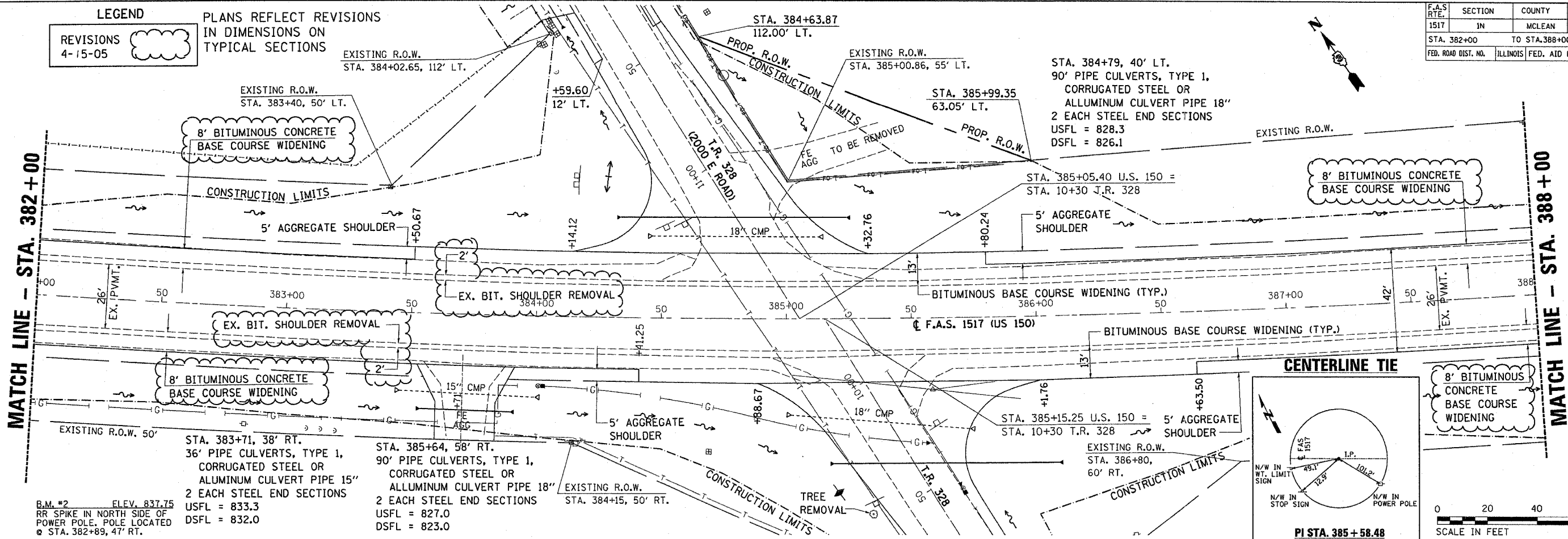
LEGEND

REVISIONS
4-15-05

PLANS REFLECT REVISIONS
IN DIMENSIONS ON
TYPICAL SECTIONS

DATE	BY	REVISION

DATE	BY	REVISION

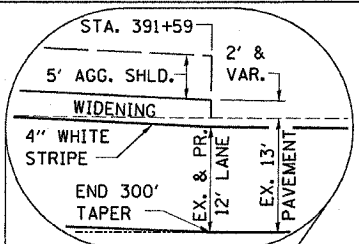


F.A.S. RTE.	SECTION	COUNTY	TOTAL SHEETS	SHEET NO.
1517	1N	MCLEAN	20	9
STA. 388+00		TO STA. 394+00		
FED. ROAD DIST. NO.	ILLINOIS	FED. AID PROJECT		

LEGEND

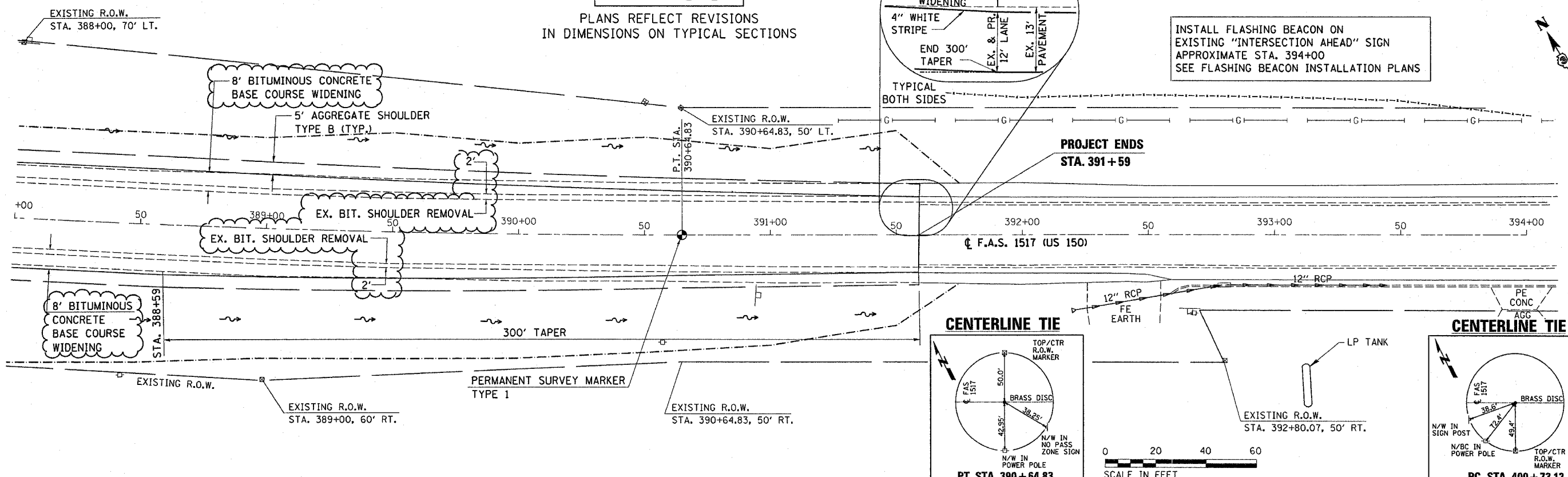
REVISIONS
4-15-05

PLANS REFLECT REVISIONS
IN DIMENSIONS ON TYPICAL SECTIONS

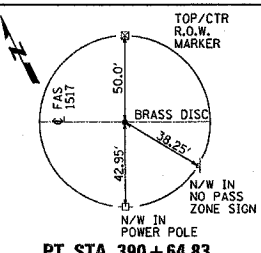


INSTALL FLASHING BEACON ON
EXISTING "INTERSECTION AHEAD" SIGN
APPROXIMATE STA. 394+00
SEE FLASHING BEACON INSTALLATION PLANS

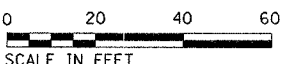
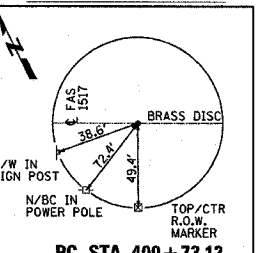
MATCH LINE - STA. 338+00



CENTERLINE TIE

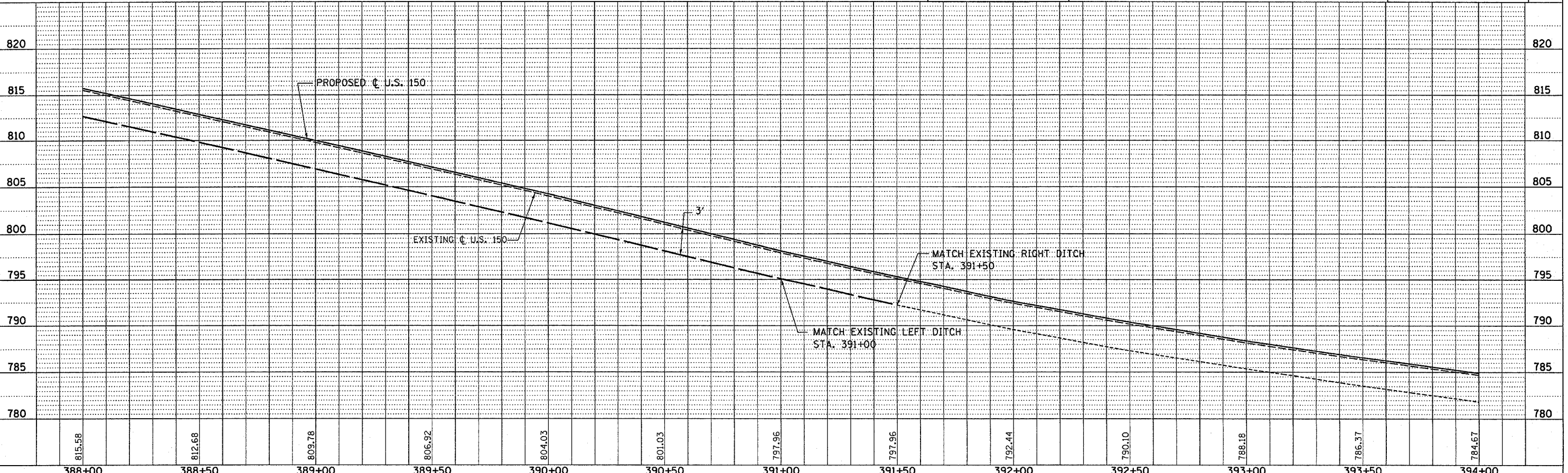


CENTERLINE TIE



PLAN	DATE
REVISIONS	
NOTED	
BY	
NO.	

PROFILE	DATE
REVISIONS	
NOTED	
BY	
NO.	



F.A.S. RTE.	SECTION	COUNTY	TOTAL SHEETS	SHEET NO.
1517	IN	MCLEAN	20	10

STA. 5+00 TO STA. 9+30
 FED. ROAD DIST. NO. ILLINOIS FED. AID PROJECT

STA. 11+95, 19' LT.
 30' PIPE CULVERTS, TYPE 1,
 CORRUGATED STEEL OR
 ALUMINUM CULVERT PIPE 12"
 2 EACH STEEL END SECTIONS
 USFL = 828.1
 DSFL = 826.8

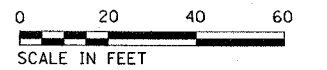
TEMPORARY EASEMENT OBTAINED FOR GRADING PURPOSES. WOVEN WIRE FENCE TO BE REMOVED AND RE-ERECTED, 30 FEET. WORK INCLUDES REMOVING AND RESETTING A GATE AND TWO PANELS OF WOVEN WIRE FENCE WITH 4 WOOD POSTS, & GRADING AS SHOWN HERE AND IN THE CROSS SECTIONS.

2' AGGREGATE SHOULDER (TYP.)

LEGEND

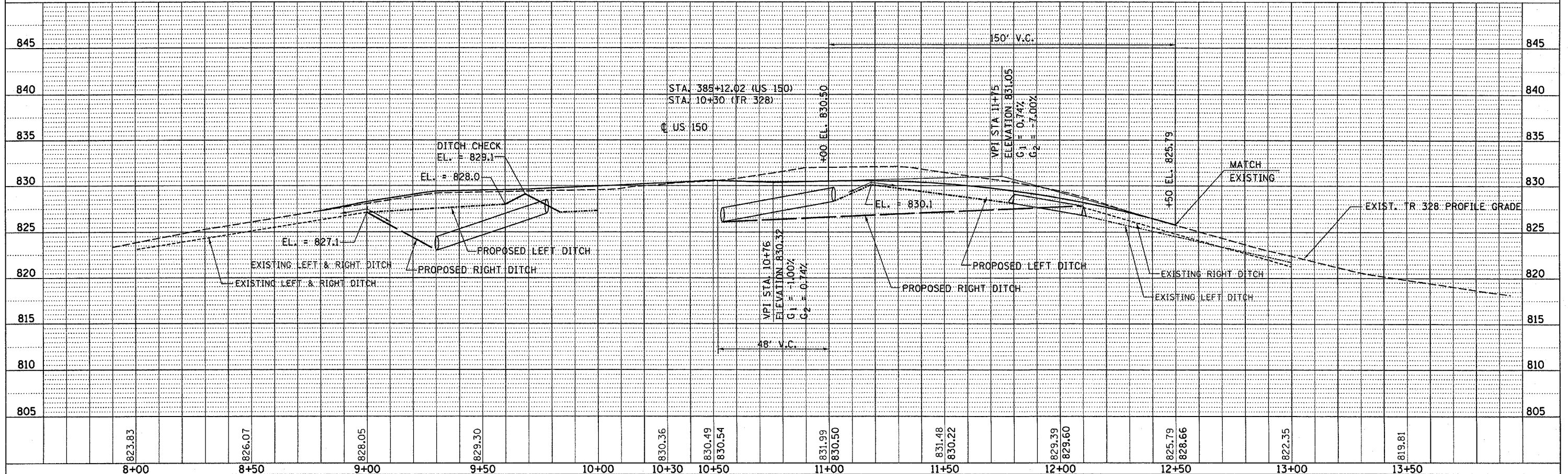
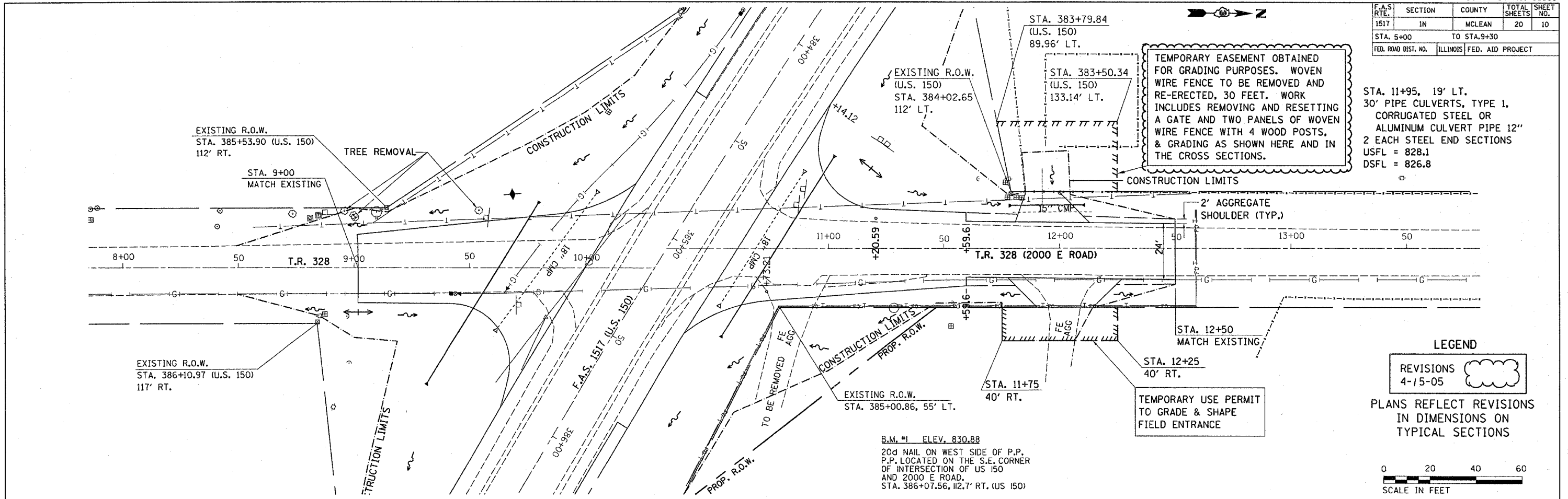
REVISIONS
 4-15-05

PLANS REFLECT REVISIONS IN DIMENSIONS ON TYPICAL SECTIONS

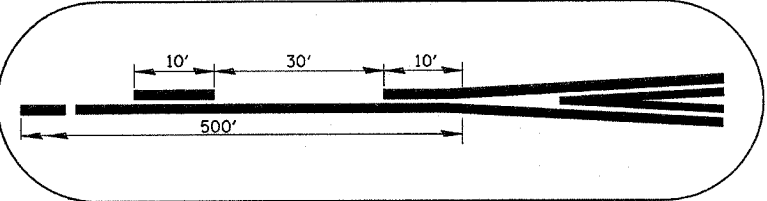
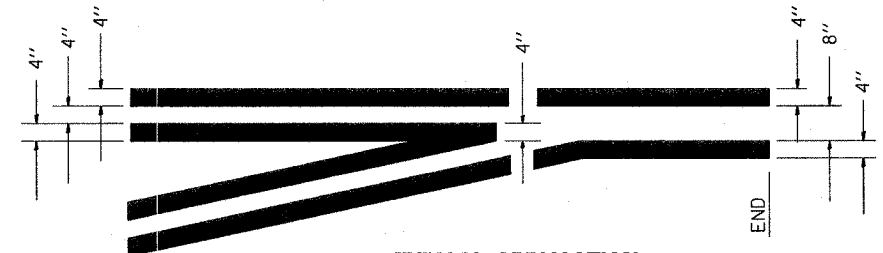
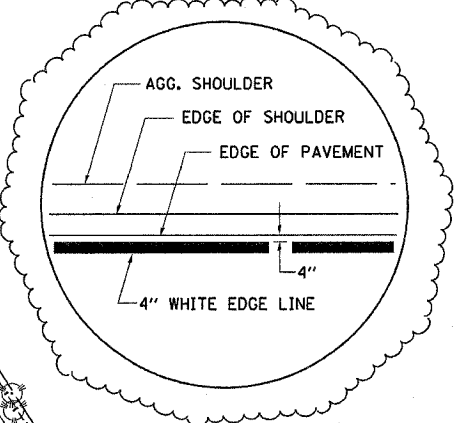
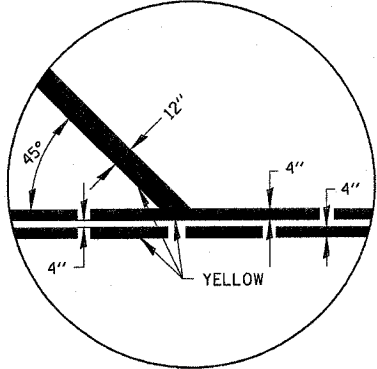


DATE	BY

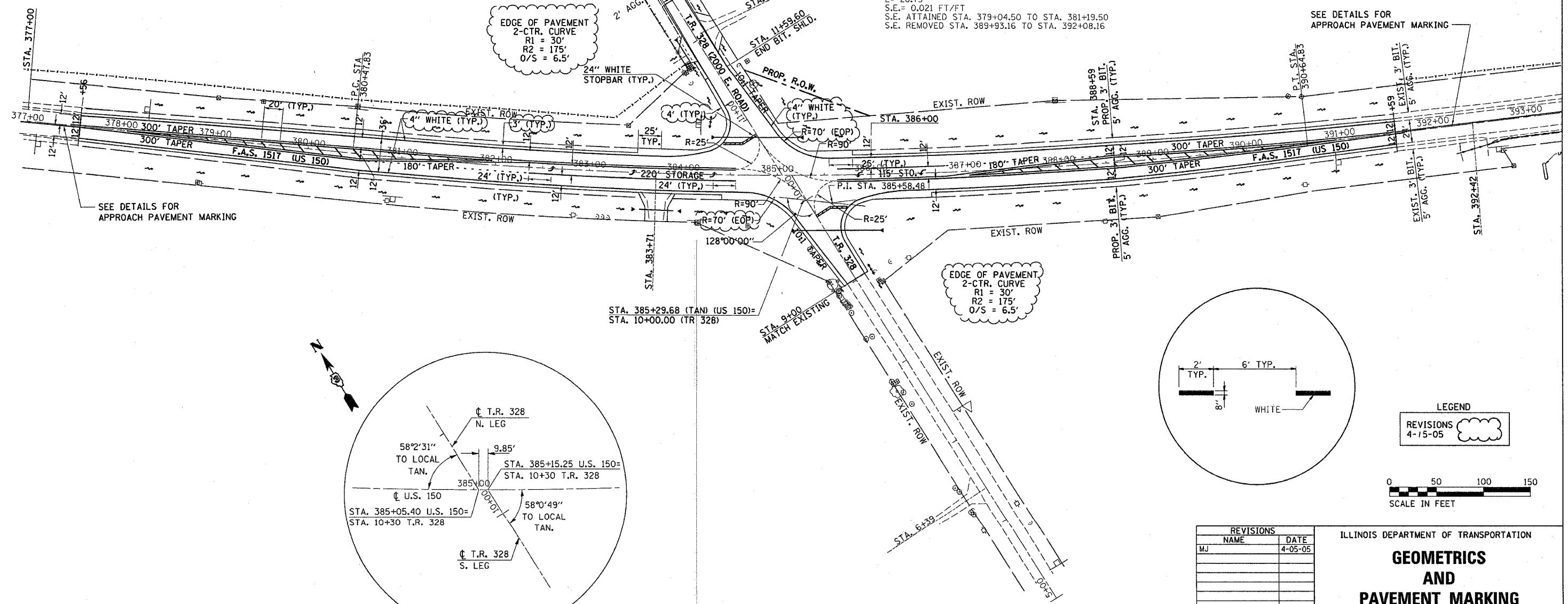
DATE	BY



F.A.S. RTE.	SECTION	COUNTY	TOTAL SHEETS	SHEET NO.
1517	IN	MCLEAN	21	11
STA. TO STA.				
FED. ROAD DIST. NO.		ILLINOIS	FED. AID PROJECT	

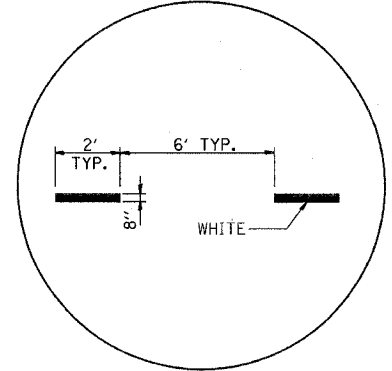
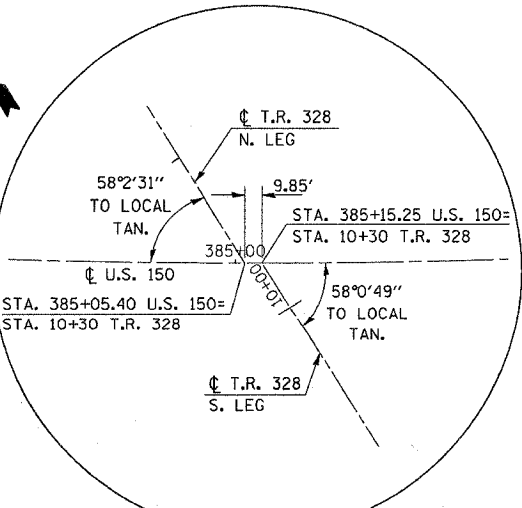


EXISTING HORIZONTAL CURVE DATA
 P.I. STA= 385+58.48
 P.C. STA= 380+47.83
 P.T. STA= 390+64.83
 $\Delta = 12^\circ 52' 55''$
 T= 510.65'
 R= 4523.35'
 D= 1^\circ 16' 00''
 L= 1017.00'
 E= 28.73'
 S.E.= 0.021 FT/FT
 S.E. ATTAINED STA. 379+04.50 TO STA. 381+19.50
 S.E. REMOVED STA. 389+93.16 TO STA. 392+08.16

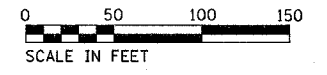


EDGE OF PAVEMENT
 2-CENTR. CURVE
 R1 = 30'
 R2 = 175'
 O/S = 6.5'

EDGE OF PAVEMENT
 2-CENTR. CURVE
 R1 = 30'
 R2 = 175'
 O/S = 6.5'



LEGEND
 REVISIONS
 4-15-05

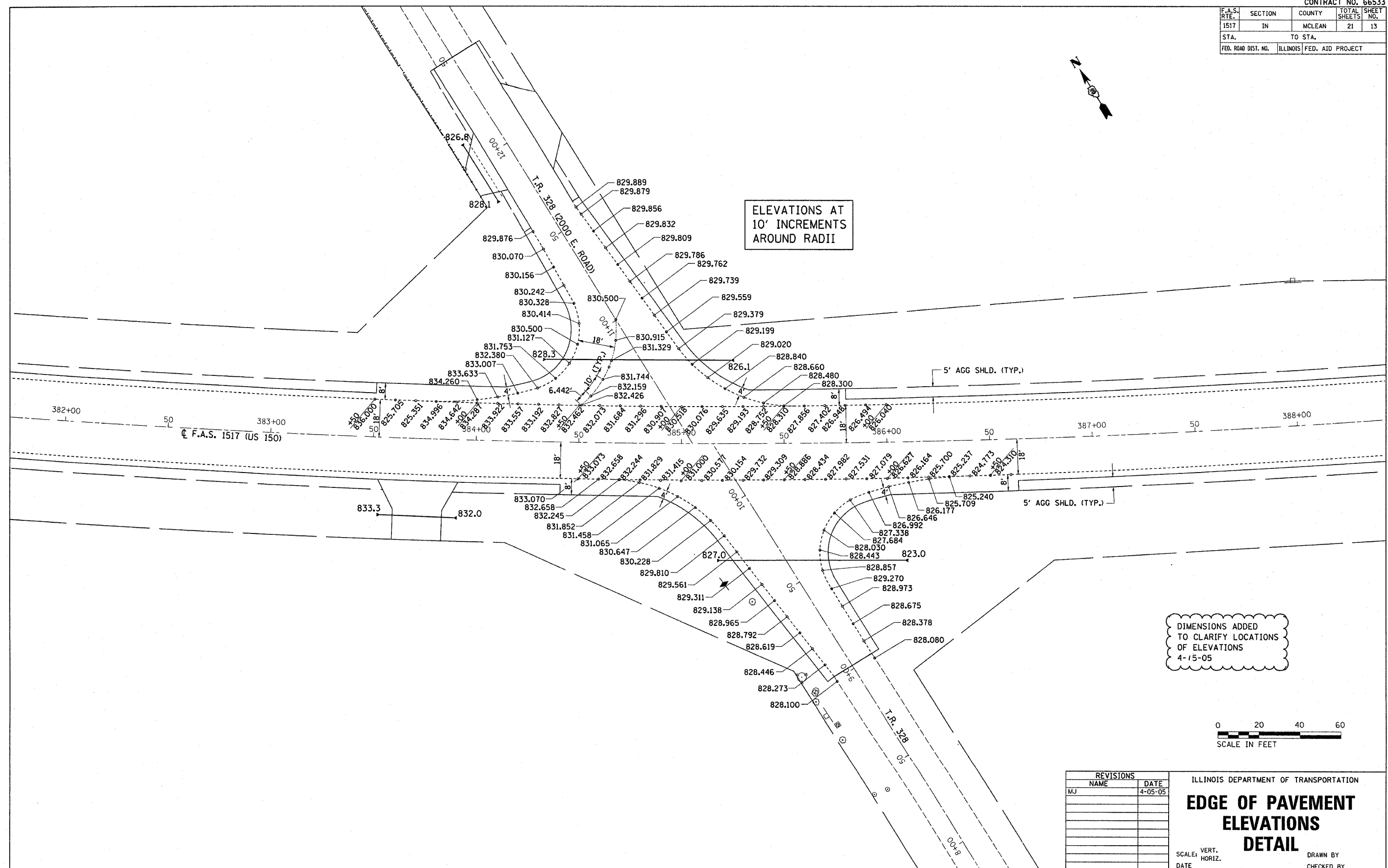


REVISIONS	
NAME	DATE
MJ	4-05-05

ILLINOIS DEPARTMENT OF TRANSPORTATION
GEOMETRICS AND PAVEMENT MARKING
 SCALE: VERT. _____
 HORIZ. _____
 DATE _____
 DRAWN BY _____
 CHECKED BY _____

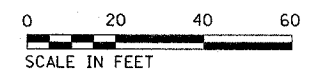
REVISED 4-15-05 MJ

F.A.S. RTE.	SECTION	COUNTY	TOTAL SHEETS	SHEET NO.
1517	IN	MCLEAN	21	13
STA.		TO STA.		
FED. ROAD DIST. NO.		ILLINOIS FED. AID PROJECT		



ELEVATIONS AT
10' INCREMENTS
AROUND RADII

DIMENSIONS ADDED
TO CLARIFY LOCATIONS
OF ELEVATIONS
4-15-05



REVISIONS	
NAME	DATE
MJ	4-05-05

ILLINOIS DEPARTMENT OF TRANSPORTATION

EDGE OF PAVEMENT ELEVATIONS DETAIL

SCALE: VERT. HORIZ.
DATE DRAWN BY CHECKED BY

REVISED 4-15-05 MJ