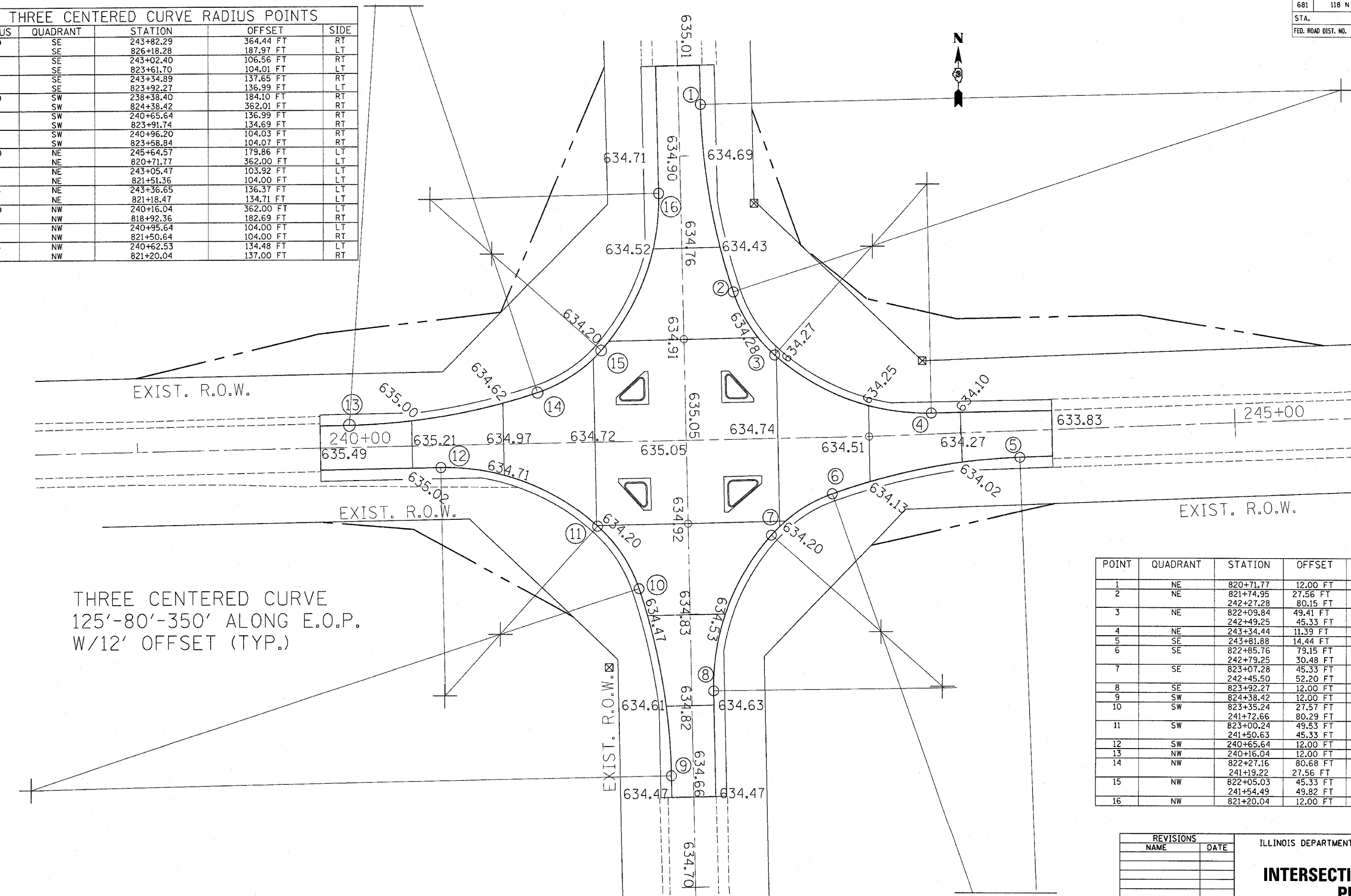


F.A.P. RTE.	SECTION	COUNTY	TOTAL SHEETS	SHEET NO.
681	118 N	IROQUOIS	30	10
STA.	TO STA.			
FED. ROAD DIST. NO.	ILLINOIS	FED. AID PROJECT		

RADIUS	QUADRANT	STATION	OFFSET	SIDE
350	SE	243+82.29	364.44 FT	RT
	SE	826+18.28	187.97 FT	LT
80	SE	243+02.40	106.56 FT	RT
	SE	823+61.70	104.01 FT	LT
125	SE	243+34.89	137.65 FT	RT
	SE	823+92.27	136.99 FT	LT
350	SW	238+38.40	184.10 FT	RT
	SW	824+38.42	362.01 FT	RT
80	SW	240+65.64	136.99 FT	RT
	SW	823+91.74	134.69 FT	RT
125	SW	240+96.20	104.03 FT	RT
	SW	823+58.84	104.07 FT	RT
350	NE	245+64.57	179.86 FT	LT
	NE	820+71.77	362.00 FT	LT
80	NE	243+05.47	103.92 FT	LT
	NE	821+51.36	104.00 FT	LT
125	NE	243+36.65	136.37 FT	LT
	NE	821+18.47	134.71 FT	LT
350	NW	240+16.04	362.00 FT	LT
	NW	818+92.36	182.69 FT	RT
80	NW	240+95.64	104.00 FT	LT
	NW	821+50.64	104.00 FT	RT
125	NW	240+62.53	134.48 FT	LT
	NW	821+20.04	137.00 FT	RT



THREE CENTERED CURVE
125'-80'-350' ALONG E.O.P.
W/12' OFFSET (TYP.)

POINT	QUADRANT	STATION	OFFSET	SIDE
1	NE	820+71.77	12.00 FT	LT
2	NE	821+74.95	27.56 FT	LT
		242+27.28	80.15 FT	LT
3	NE	822+09.84	49.41 FT	LT
		242+49.25	45.33 FT	LT
4	NE	243+34.44	11.39 FT	LT
5	SE	243+81.88	14.44 FT	RT
6	SE	822+85.76	79.15 FT	LT
		242+79.25	30.48 FT	RT
7	SE	823+07.28	45.33 FT	LT
		242+45.50	52.20 FT	RT
8	SE	823+92.27	12.00 FT	LT
9	SW	824+38.42	12.00 FT	RT
10	SW	823+35.24	27.57 FT	RT
		241+72.66	80.29 FT	RT
11	SW	823+00.24	49.53 FT	RT
		241+50.63	45.33 FT	RT
12	SW	240+65.64	12.00 FT	RT
13	NW	240+16.04	12.00 FT	LT
14	NW	822+27.16	80.68 FT	RT
		241+19.22	27.56 FT	LT
15	NW	822+05.03	45.33 FT	RT
		241+54.49	49.82 FT	LT
16	NW	821+20.04	12.00 FT	RT

REVISIONS	
NAME	DATE

ILLINOIS DEPARTMENT OF TRANSPORTATION
INTERSECTION LAYOUT PLAN

SCALE: VERT. _____
HORIZ. _____
DATE _____ DRAWN BY _____
CHECKED BY _____

2/14/2005
c:\pro\ecfs\p02704\061011.s.dgn