

| F.A.I. RTE.               | SECTION                    | COUNTY   | TOTAL SHEETS     | SHEET NO. |
|---------------------------|----------------------------|----------|------------------|-----------|
| 57                        | D-3 BRIDGE PAINTING 2005-1 | IROQUOIS | 16               | 1         |
| FED. ROAD DIST. NO. _____ |                            | ILLINOIS | FED. AID PROJECT |           |

**INDEX OF SHEETS**

1. COVER SHEET
2. GENERAL NOTES
3. SUMMARY OF QUANTITIES
4. SCHEDULES
5. TRAFFIC CONTROL DETAILS - RIGHT LANE CLOSURE
6. TRAFFIC CONTROL DETAILS - LEFT LANE CLOSURE
7. EXISTING STRUCTURE PLANS - FOR INFORMATION ONLY BRIDGE NO. 1 038-0048
8. EXISTING STRUCTURE PLANS - FOR INFORMATION ONLY BRIDGE NO. 1 038-0048
9. EXISTING STRUCTURE PLANS - FOR INFORMATION ONLY BRIDGE NO. 2 038-0082
10. EXISTING STRUCTURE PLANS - FOR INFORMATION ONLY BRIDGE NO. 2 038-0082
11. EXISTING STRUCTURE PLANS - FOR INFORMATION ONLY BRIDGE NO. 3 038-0133
12. EXISTING STRUCTURE PLANS - FOR INFORMATION ONLY BRIDGE NO. 3 038-0133
13. EXISTING STRUCTURE PLANS - FOR INFORMATION ONLY BRIDGE NO. 4 038-0134
14. EXISTING STRUCTURE PLANS - FOR INFORMATION ONLY BRIDGE NO. 4 038-0134
15. EXISTING STRUCTURE PLANS - FOR INFORMATION ONLY BRIDGE NO. 5 038-0077
16. EXISTING STRUCTURE PLANS - FOR INFORMATION ONLY BRIDGE NO. 5 038-0077

**STANDARDS**

- |           |   |
|-----------|---|
| 635011-01 | REFLECTOR MARKER AND MOUNTING DETAILS   |
| 701001-01 | OFF-ROAD OPERATIONS 2L, 2W, 4.5 m (15') MIN. AWAY FOR SPEEDS > 45 MPH         |
| 701006-02 | OFF-ROAD OPERATIONS 2L, 2W, 4.5 m (15') TO PAVEMENT EDGE FOR SPEEDS > 45 MPH  |
| 701101-01 | OFF-ROAD OPERATIONS, MULTILANE LESS THAN 4.5 m (15') AWAY FOR SPEEDS > 45 MPH |
| 701106-01 | OFF-ROAD OPERATIONS, MULTILANE MORE THAN 4.5 m (15') AWAY FOR SPEEDS > 45 MPH |
| 701400-02 | APPROACH TO LANE CLOSURE, FREEWAY/EXPRESSWAY                                  |
| 701402-05 | LANE CLOSURE FREEWAY/EXPRESSWAY WITH BARRIER                                  |
| 701411-03 | LANE CLOSURE, MULTILANE AT ENTRANCE OR EXIT RAMP FOR SPEEDS > 45 MPH          |
| 702001-05 | TRAFFIC CONTROL DEVICES   |
| 704001-02 | TEMPORARY CONCRETE BARRIER  |

MICROFILMED \_\_\_\_\_  
 REEL NUMBER \_\_\_\_\_  
 AWARDED \_\_\_\_\_  
 RESIDENT ENGINEER \_\_\_\_\_  
 AS BUILT CHANGES WERE MADE  
 ON THE FOLLOWING SHEETS \_\_\_\_\_

J.U.L.I.E.  
 JOINT UTILITY LOCATION INFORMATION FOR EXCAVATION  
 1-800-892-0123

**DISTRICT NO. 3 815-434-6131**

PROJECT ENGINEER: TOM HUFNAGEL 815-434-8418

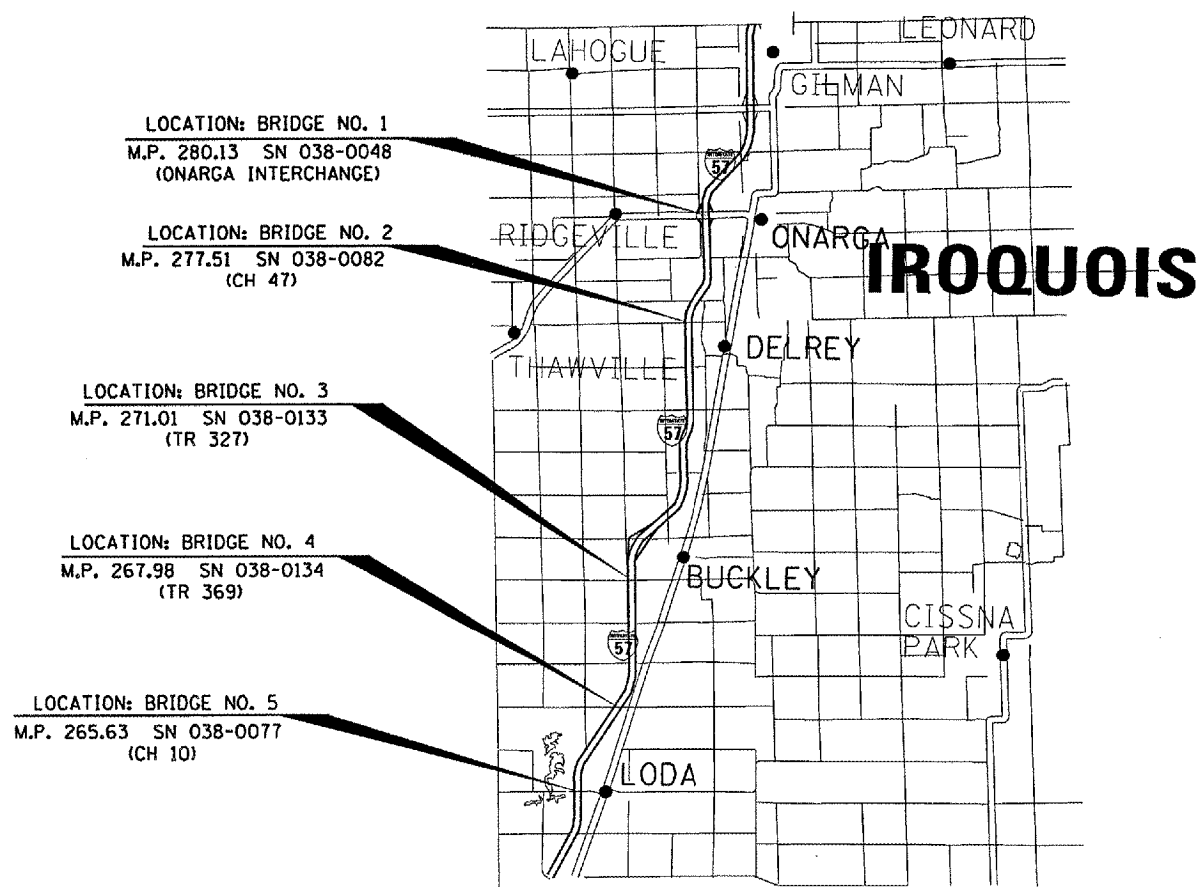
UNIT CHIEF: RON WOODSHANK 815-434-8419

CONTACT PERSON: MARK HARDEN 815-739-2481

TOWNSHIP: ONARGA, ARTESIA, LODA

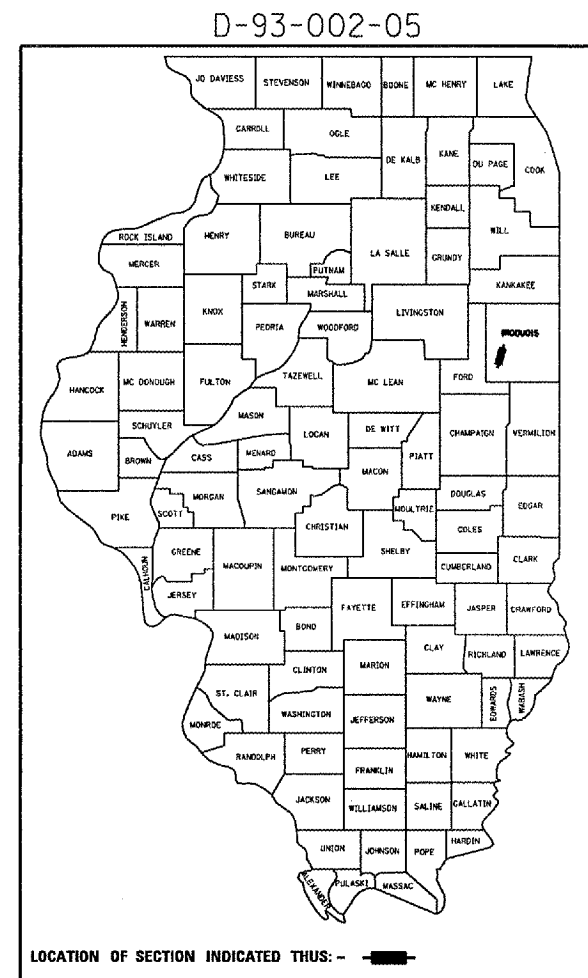
**CONTRACT NO. 66549**

**STATE OF ILLINOIS**  
**DEPARTMENT OF TRANSPORTATION**  
**DIVISION OF HIGHWAYS**  
**PROPOSED**  
**HIGHWAY PLANS**  
**FAI ROUTE 57 (I-57)**  
**SECTION: D-3 BRIDGE PAINTING 2005-1**  
**IROQUOIS COUNTY**  
**C-93-030-05**



**LOCATION MAP**

NOT TO SCALE  
 GROSS LENGTH = 76560 FT. = 14.5 MI.  
 NET LENGTH = 1185 FT. = 0.22 MI.



**FUNCTIONAL CLASSIFICATION**

RURAL: INTERSTATE  
 FAI ROUTE 57 (I-57)  
 2003 ADT = 15900  
 P.V = 68.6%    M.U. = 26.4%    S.U. = 5.0%

STATE OF ILLINOIS  
 DEPARTMENT OF TRANSPORTATION  
 DIVISION OF HIGHWAYS

SUBMITTED 2/18 2005

Gregory L. Albrecht  
 DEPUTY DIRECTOR OF HIGHWAYS, REGION ENGINEER

March 25, 20 05  
Mike Here  
 ENGINEER OF DESIGN AND ENVIRONMENT

March 25, 20 05  
Victor Modler  
 DIRECTOR OF HIGHWAYS, CHIEF ENGINEER

**PRINTED BY THE AUTHORITY  
 OF THE STATE OF ILLINOIS**

Date: 01/10/05  
 b:\bridgepaint05\2005-1\details.dgn

| F.A.I. RTE.           | SECTION                    | COUNTY   | TOTAL SHEETS     | SHEET NO. |
|-----------------------|----------------------------|----------|------------------|-----------|
| 57                    | D-3 BRIDGE PAINTING 2005-1 | IROQUOIS | 16               | 2         |
| FED. ROAD DIST. NO. . |                            | ILLINOIS | FED. AID PROJECT |           |

**GENERAL NOTES:**

Plan dimensions and details relative to the existing roadway and structure have been taken from existing plans and are subject to nominal construction variations. It shall be the contractor's responsibility to verify such dimensions and details in the field and to make necessary approved adjustments prior to construction or ordering of materials. Such variations shall not be cause for additional compensation for a change in the scope of the work, however, the contractor will be paid for the quantity actually furnished at the unit price bid for the work.

The contractor shall be responsible for protecting utility property from construction operations as outlined in Article 107.31 of the Standard Specifications. The "Julie" Number is 1-800-892-0123. A minimum of forty-eight (48) hours advance notice is required.

For stabilization, all Type III barricades shall require a minimum of four sand bags per barricade.

Where section or subsection monuments are encountered, the engineer shall be notified before such monuments are removed. The contractor shall protect and carefully preserve all monuments until an authorized surveyor or agent has witnessed or otherwise referenced their location. The contractor shall be responsible for having an authorized surveyor reestablish any section or subsection monuments destroyed by his operations.

Any reference to a standard in these plans shall be interpreted to mean the edition as indicated by the subnumber listed on the index of sheets or the copy of the standard included in these plans.

The contractor shall be required to secure the waste containers that remain on the job site. This will entail that all waste containers can not be moved or opened during non-working hours.

Working days shall be charged until the contractor/subcontractor licensed to dispose of lead paint residue has removed the waste material from the job site according to all Federal, State and Local Laws and Ordinances.

The existing structural steel coating contains lead. The Contractor should take appropriate precautions to deal with the presence of lead on this project.

The SSPC-QP1 and SSPC-QP2 Painting Contractor Certifications will be required for this project.

Cleaning and painting of the existing structural steel shall be as specified in the Special Provision for Cleaning and Painting Existing Steel Structures. All existing steel shall be cleaned per Near White Blast Cleaning - SSPC-SP10. All existing steel shall be painted according to the requirements of Paint System 1 - OZ/EU. The color of the final finish coat for all interior steel surfaces shall be Gray, Munsell No. 5B 7/1. The color of the final finish coat for the exterior and bottom flange of the fascia beams shall be Reddish Brown, Munsell No. 2.5YR 3/4.

DATE: 2/8/05

PREPARED BY: *James A. Muehlen*  
DISTRICT OPERATIONS ENGINEER

EXAMINED BY: *Harold J. Gray*  
DISTRICT CONSTRUCTION ENGINEER

*Thomas R. Sanderson*  
DISTRICT STUDIES & PLANS ENGINEER

*Kenneth R. Lang*  
DISTRICT MATERIALS ENGINEER

| REVISIONS |      |
|-----------|------|
| NAME      | DATE |
|           |      |
|           |      |
|           |      |
|           |      |
|           |      |
|           |      |
|           |      |
|           |      |
|           |      |
|           |      |

ILLINOIS DEPARTMENT OF TRANSPORTATION

**GENERAL NOTES**

SCALE: VERT.  
HORIZ.  
DATE 06/21/04

DRAWN BY RW  
CHECKED BY

Date: 01/10/05  
bridgepaint05/2005-1/details.dgn

|                     |                            |          |                  |           |
|---------------------|----------------------------|----------|------------------|-----------|
| F.A.I. RTE.         | SECTION                    | COUNTY   | TOTAL SHEETS     | SHEET NO. |
| 57                  | D-3 BRIDGE PAINTING 2005-1 | IRROUOIS | 16               | 3         |
| FED. ROAD DIST. NO. |                            | ILLINOIS | FED. AID PROJECT |           |

## SUMMARY OF QUANTITIES

CONSTRUCTION CODE:

**SFTY-2A**  
RURAL  
100% STATE  
TOTAL QUANTITY

| CODE NO.   | ITEM  | UNIT   | TOTAL QUANTITY |
|------------|---|--------|----------------|
| 50600600   | CLEANING AND PAINTING STEEL BRIDGE NO. 1                              | L SUM  | 1              |
| 50600700   | CLEANING AND PAINTING STEEL BRIDGE NO. 2                              | L SUM  | 1              |
| 50600800   | CLEANING AND PAINTING STEEL BRIDGE NO. 3                              | L SUM  | 1              |
| 50600900   | CLEANING AND PAINTING STEEL BRIDGE NO. 4                              | L SUM  | 1              |
| 50601000   | CLEANING AND PAINTING STEEL BRIDGE NO. 5                              | L SUM  | 1              |
| 50606401   | CONTAINMENT AND DISPOSAL OF LEAD PAINT CLEANING RESIDUES BRIDGE NO. 1 | L SUM  | 1              |
| 50606402   | CONTAINMENT AND DISPOSAL OF LEAD PAINT CLEANING RESIDUES BRIDGE NO. 2 | L SUM  | 1              |
| 50606403   | CONTAINMENT AND DISPOSAL OF LEAD PAINT CLEANING RESIDUES BRIDGE NO. 3 | L SUM  | 1              |
| 50606404   | CONTAINMENT AND DISPOSAL OF LEAD PAINT CLEANING RESIDUES BRIDGE NO. 4 | L SUM  | 1              |
| 50606405   | CONTAINMENT AND DISPOSAL OF LEAD PAINT CLEANING RESIDUES BRIDGE NO. 5 | L SUM  | 1              |
| 67100100   | MOBILIZATION  | L SUM  | 1              |
| 70100207   | TRAFFIC CONTROL AND PROTECTION, STANDARD 701402                       | EACH   | 10             |
| 70100305   | TRAFFIC CONTROL AND PROTECTION, STANDARD 701400                       | L SUM  | 1              |
| 70100420   | TRAFFIC CONTROL AND PROTECTION, STANDARD 701411                       | EACH   | 2              |
| 70103815   | TRAFFIC CONTROL SURVEILLANCE  | CAL DA | 135            |
| 70400100   | TEMPORARY CONCRETE BARRIER  | FOOT   | 1340           |
| 70400200   | RELOCATE TEMPORARY CONCRETE BARRIER                                   | FOOT   | 2840           |
| X5067501   | BRIDGE CLEANING AND PAINTING WARRANTY NUMBER 1                        | L SUM  | 1              |
| X5067502   | BRIDGE CLEANING AND PAINTING WARRANTY NUMBER 2                        | L SUM  | 1              |
| X5067503   | BRIDGE CLEANING AND PAINTING WARRANTY NUMBER 3                        | L SUM  | 1              |
| X5067504   | BRIDGE CLEANING AND PAINTING WARRANTY NUMBER 4                        | L SUM  | 1              |
| X5067505   | BRIDGE CLEANING AND PAINTING WARRANTY NUMBER 5                        | L SUM  | 1              |
| * Z0030250 | IMPACT ATTENUATORS, TEMPORARY (NON-REDIRECTIVE), TEST LEVEL 3         | EACH   | 5              |
| * Z0030350 | IMPACT ATTENUATORS, RELOCATE (NON-REDIRECTIVE), TEST LEVEL 3          | EACH   | 15             |

\* SFTY-3N

| REVISIONS |      |
|-----------|------|
| NAME      | DATE |
|           |      |
|           |      |
|           |      |
|           |      |
|           |      |
|           |      |
|           |      |
|           |      |
|           |      |
|           |      |

ILLINOIS DEPARTMENT OF TRANSPORTATION

### SUMMARY OF QUANTITIES

SCALE: VERT. HORIZ. DATE 06/21/04

DRAWN BY RW CHECKED BY

Date: 01/10/05  
br:bridgepaint05/2005-1/details.dgn

|                     |                            |          |                  |           |
|---------------------|----------------------------|----------|------------------|-----------|
| F.A.J. RTE.         | SECTION                    | COUNTY   | TOTAL SHEETS     | SHEET NO. |
| 57                  | D-3 BRIDGE PAINTING 2005-1 | IRROUOIS | 16               | 4         |
| FED. ROAD DIST. NO. |                            | ILLINOIS | FED. AID PROJECT |           |

| SCHEDULE FOR BRIDGE NO. 1<br>S.N. 038-0048                            |         |          |
|---|---------|----------|
| ITEM  | UNIT    | QUANTITY |
| CLEANING AND PAINTING STEEL BRIDGE NO. 1                              | L SUM   | 1        |
| CONTAINMENT AND DISPOSAL OF LEAD PAINT CLEANING RESIDUES BRIDGE NO. 1 | L SUM   | 1        |
| MOBILIZATION  | L SUM   | 0.2      |
| TRAFFIC CONTROL AND PROTECTION STANDARD 701400                        | L SUM   | 0.2      |
| TRAFFIC CONTROL AND PROTECTION STANDARD 701402                        | EACH    | 2        |
| TRAFFIC CONTROL AND PROTECTION STANDARD 701411                        | EACH    | 2        |
| TRAFFIC CONTROL SURVEILLANCE  | CAL DAY | 27       |
| TEMPORARY CONCRETE BARRIER  | FOOT    | 300      |
| RELOCATE TEMPORARY CONCRETE BARRIER                                   | FOOT    | 600      |
| BRIDGE CLEANING AND PAINTING WARRANTY NO. 1                           | L SUM   | 1        |
| IMPACT ATTENUATORS TEMPORARY (NON-DIRECTIVE) TEST LEVEL 3             | EACH    | 1        |
| IMPACT ATTENUATORS RELOCATE (NON-DIRECTIVE) TEST LEVEL 3              | EACH    | 3        |

| SCHEDULE FOR BRIDGE NO. 4<br>S.N. 038-0134                            |         |          |
|---|---------|----------|
| ITEM  | UNIT    | QUANTITY |
| CLEANING AND PAINTING STEEL BRIDGE NO. 4                              | L SUM   | 1        |
| CONTAINMENT AND DISPOSAL OF LEAD PAINT CLEANING RESIDUES BRIDGE NO. 4 | L SUM   | 1        |
| MOBILIZATION  | L SUM   | 0.2      |
| TRAFFIC CONTROL AND PROTECTION STANDARD 701400                        | L SUM   | 0.2      |
| TRAFFIC CONTROL AND PROTECTION STANDARD 701402                        | EACH    | 2        |
| TRAFFIC CONTROL SURVEILLANCE  | CAL DAY | 27       |
| TEMPORARY CONCRETE BARRIER  | FOOT    | 260      |
| RELOCATE TEMPORARY CONCRETE BARRIER                                   | FOOT    | 560      |
| BRIDGE CLEANING AND PAINTING WARRANTY NO. 4                           | L SUM   | 1        |
| IMPACT ATTENUATORS TEMPORARY (NON-DIRECTIVE) TEST LEVEL 3             | EACH    | 1        |
| IMPACT ATTENUATORS RELOCATE (NON-DIRECTIVE) TEST LEVEL 3              | EACH    | 3        |

| SCHEDULE FOR BRIDGE NO. 2<br>S.N. 038-0082                            |         |          |
|---|---------|----------|
| ITEM  | UNIT    | QUANTITY |
| CLEANING AND PAINTING STEEL BRIDGE NO. 2                              | L SUM   | 1        |
| CONTAINMENT AND DISPOSAL OF LEAD PAINT CLEANING RESIDUES BRIDGE NO. 2 | L SUM   | 1        |
| MOBILIZATION  | L SUM   | 0.2      |
| TRAFFIC CONTROL AND PROTECTION STANDARD 701400                        | L SUM   | 0.2      |
| TRAFFIC CONTROL AND PROTECTION STANDARD 701402                        | EACH    | 2        |
| TRAFFIC CONTROL SURVEILLANCE  | CAL DAY | 27       |
| TEMPORARY CONCRETE BARRIER  | FOOT    | 260      |
| RELOCATE TEMPORARY CONCRETE BARRIER                                   | FOOT    | 560      |
| BRIDGE CLEANING AND PAINTING WARRANTY NO. 2                           | L SUM   | 1        |
| IMPACT ATTENUATORS TEMPORARY (NON-DIRECTIVE) TEST LEVEL 3             | EACH    | 1        |
| IMPACT ATTENUATORS RELOCATE (NON-DIRECTIVE) TEST LEVEL 3              | EACH    | 3        |

| SCHEDULE FOR BRIDGE NO. 5<br>S.N. 038-0077                            |         |          |
|---|---------|----------|
| ITEM  | UNIT    | QUANTITY |
| CLEANING AND PAINTING STEEL BRIDGE NO. 5                              | L SUM   | 1        |
| CONTAINMENT AND DISPOSAL OF LEAD PAINT CLEANING RESIDUES BRIDGE NO. 5 | L SUM   | 1        |
| MOBILIZATION  | L SUM   | 0.2      |
| TRAFFIC CONTROL AND PROTECTION STANDARD 701400                        | L SUM   | 0.2      |
| TRAFFIC CONTROL AND PROTECTION STANDARD 701402                        | EACH    | 2        |
| TRAFFIC CONTROL SURVEILLANCE  | CAL DAY | 27       |
| TEMPORARY CONCRETE BARRIER  | FOOT    | 260      |
| RELOCATE TEMPORARY CONCRETE BARRIER                                   | FOOT    | 560      |
| BRIDGE CLEANING AND PAINTING WARRANTY NO. 5                           | L SUM   | 1        |
| IMPACT ATTENUATORS TEMPORARY (NON-DIRECTIVE) TEST LEVEL 3             | EACH    | 1        |
| IMPACT ATTENUATORS RELOCATE (NON-DIRECTIVE) TEST LEVEL 3              | EACH    | 3        |







| SCHEDULE FOR BRIDGE NO. 3<br>S.N. 038-0133                            |         |          |
|---|---------|----------|
| ITEM  | UNIT    | QUANTITY |
| CLEANING AND PAINTING STEEL BRIDGE NO. 3                              | L SUM   | 1        |
| CONTAINMENT AND DISPOSAL OF LEAD PAINT CLEANING RESIDUES BRIDGE NO. 3 | L SUM   | 1        |
| MOBILIZATION  | L SUM   | 0.2      |
| TRAFFIC CONTROL AND PROTECTION STANDARD 701400                        | L SUM   | 0.2      |
| TRAFFIC CONTROL AND PROTECTION STANDARD 701402                        | EACH    | 2        |
| TRAFFIC CONTROL SURVEILLANCE  | CAL DAY | 27       |
| TEMPORARY CONCRETE BARRIER  | FOOT    | 260      |
| RELOCATE TEMPORARY CONCRETE BARRIER                                   | FOOT    | 560      |
| BRIDGE CLEANING AND PAINTING WARRANTY NO. 3                           | L SUM   | 1        |
| IMPACT ATTENUATORS TEMPORARY (NON-DIRECTIVE) TEST LEVEL 3             | EACH    | 1        |
| IMPACT ATTENUATORS RELOCATE (NON-DIRECTIVE) TEST LEVEL 3              | EACH    | 3        |

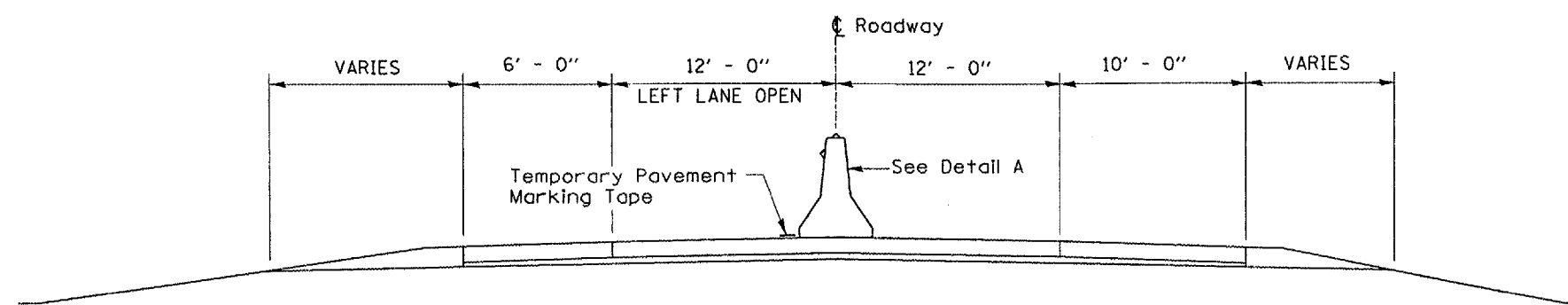
|           |                     |                                       |
|-----------|---------------------|---------------------------------------|
| REVISIONS |                     | ILLINOIS DEPARTMENT OF TRANSPORTATION |
| NAME      | DATE                |                                       |
|           |                     |                                       |
|           |                     |                                       |
|           |                     |                                       |
|           |                     |                                       |
|           |                     |                                       |
|           |                     |                                       |
|           |                     |                                       |
|           |                     |                                       |
| SCALE:    | VERT. DATE 06/21/04 | DRAWN BY RW<br>CHECKED BY             |

Date: 01/10/05  
D:\cgpain\05\2005-1\details.dgn

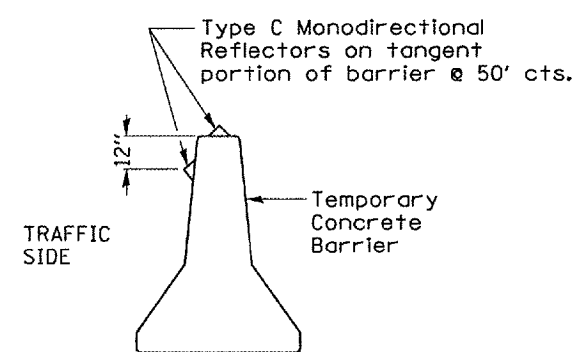
| F.A.I. RTE.               | SECTION                    | COUNTY                    | TOTAL SHEETS | SHEET NO. |
|---------------------------|----------------------------|---------------------------|--------------|-----------|
| 57                        | D-3 BRIDGE PAINTING 2005-1 | IROQUOIS                  | 16           | 5         |
| FED. ROAD DIST. NO. _____ |                            | ILLINOIS FED. AID PROJECT |              |           |

**LENGEND**

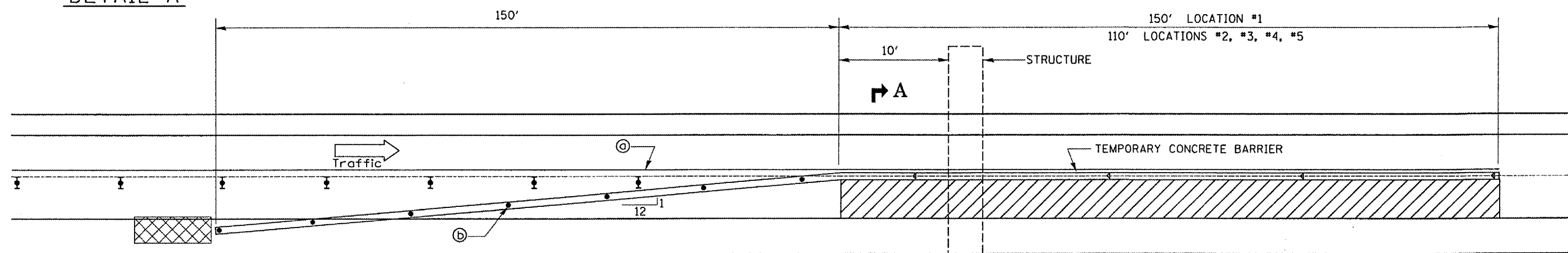
-  Work Zone
-  Type II barricade, drum or vertical barricade with steady burn monodirectional light
-  Temporary concrete barrier
-  Type C Monodirectional reflector
-  Vertical panel with steady burn monodirectional light
-  Impact attenuator



**SECTION A-A**



**DETAIL A**



- (a) Reflectorized temporary pavement marking tape shall be placed throughout the taper and along side the work area. The edge line shall be white for right lane closure.
- (b) Vertical panels at 25' centers with steady burning monodirectional lights.

**PLAN**

Work this sheet with Traffic Control Standards 701400 & 701402



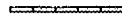



| REVISIONS |      |
|-----------|------|
| NAME      | DATE |
|           |      |
|           |      |
|           |      |
|           |      |
|           |      |
|           |      |
|           |      |
|           |      |
|           |      |
|           |      |

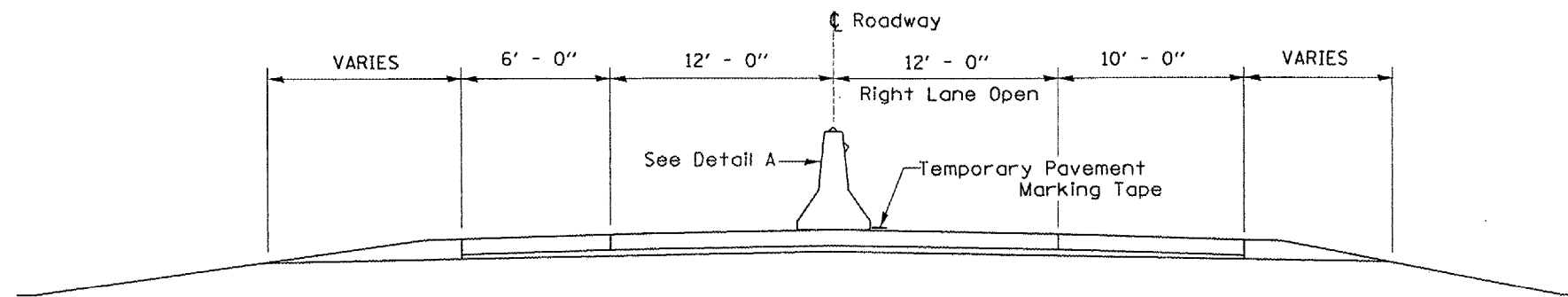
ILLINOIS DEPARTMENT OF TRANSPORTATION  
**TRAFFIC CONTROL DETAILS**  
**RIGHT LANE CLOSURE**  
 SCALE: VERT. \_\_\_\_\_  
 HORIZ. \_\_\_\_\_  
 DATE 06/21/04  
 DRAWN BY RW  
 CHECKED BY \_\_\_\_\_

Date: 01/10/05  
 bridgepaint05/2005-1/details.dgn

|                     |                            |                           |                 |
|---------------------|----------------------------|---------------------------|-----------------|
| F.A.I. ATE.         | SECTION                    | COUNTY                    | TOTAL SHEET NO. |
| 57                  | D-3 BRIDGE PAINTING 2005-1 | IROQUOIS                  | 16              |
| FED. ROAD DIST. NO. |                            | ILLINOIS FED. AID PROJECT | 6               |

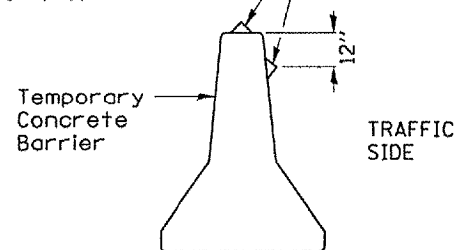
**LENGEND**

-  Work Zone
-  Type II barricade, drum or vertical barricade with steady burn monodirectional light
-  Temporary concrete barrier
-  Type C Monodirectional reflector
-  Vertical panel with steady burn monodirectional light
-  Impact attenuator



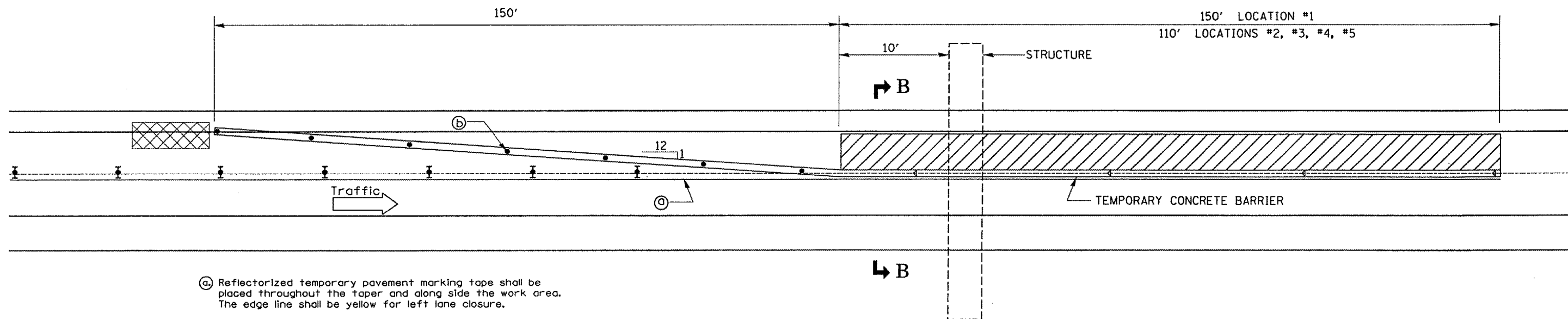
**SECTION B-B**

Type C Monodirectional Reflectors on tangent portion of barrier @ 50' cts.



**DETAIL A**

Note: Color of reflectors shall match the color of the adjacent temporary pavement striping.



**PLAN**

- (a) Reflectorized temporary pavement marking tape shall be placed throughout the taper and along side the work area. The edge line shall be yellow for left lane closure.
- (b) Vertical panels at 25' centers with steady burning monodirectional lights.

| REVISIONS |      |
|-----------|------|
| NAME      | DATE |
|           |      |
|           |      |
|           |      |
|           |      |
|           |      |
|           |      |
|           |      |
|           |      |
|           |      |
|           |      |

ILLINOIS DEPARTMENT OF TRANSPORTATION

**TRAFFIC CONTROL DETAILS  
LEFT LANE CLOSURE**

SCALE: VERT.     
HORIZ.     
DATE 06/21/04

DRAWN BY RW  
CHECKED BY

Work this sheet with Traffic Control Standards 701400 & 701402

Date: 01/10/05  
bridgepaint05/2005-1/ae.talls.dgn

| F.A.I. SHEETS       | SECTION                    | COUNTY   | TOTAL SHEETS              |
|---------------------|----------------------------|----------|---------------------------|
| 57                  | D-3 BRIDGE PAINTING 2005-1 | IROQUOIS | 16                        |
| FED. ROAD DIST. NO. |                            |          | ILLINOIS FED. AID PROJECT |

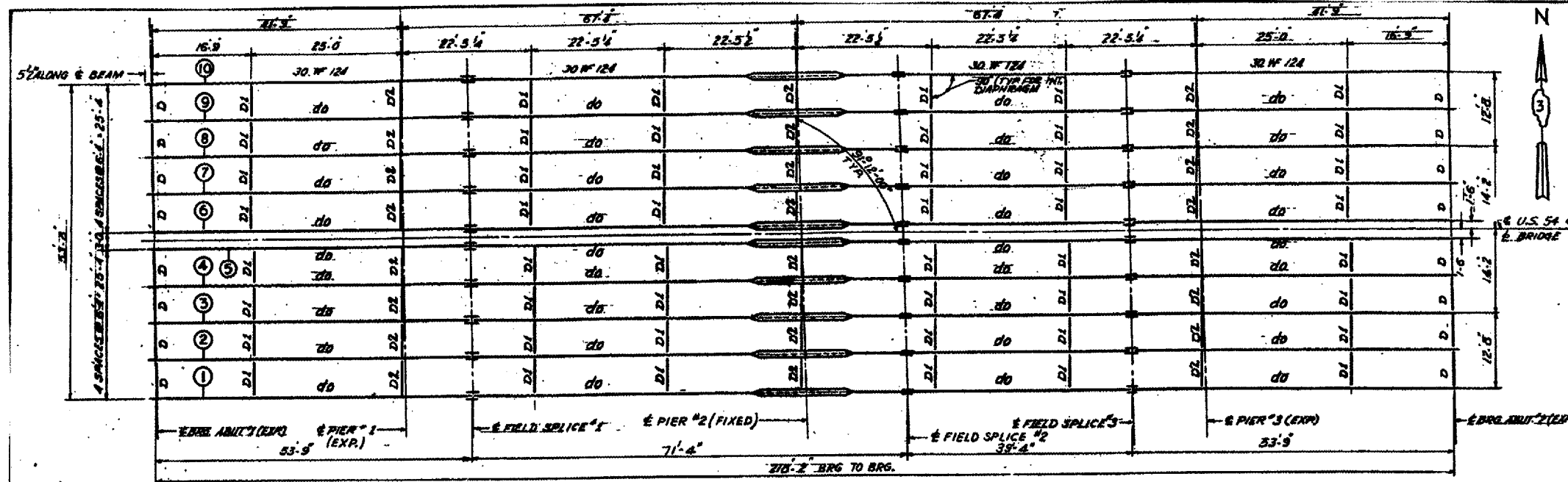
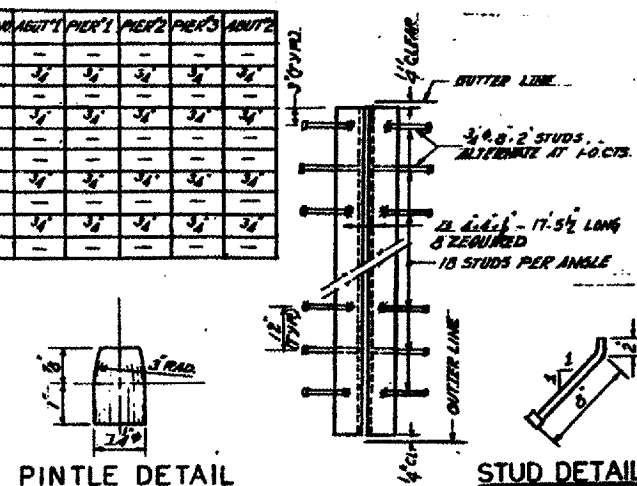


TABLE OF SHIM PLATES

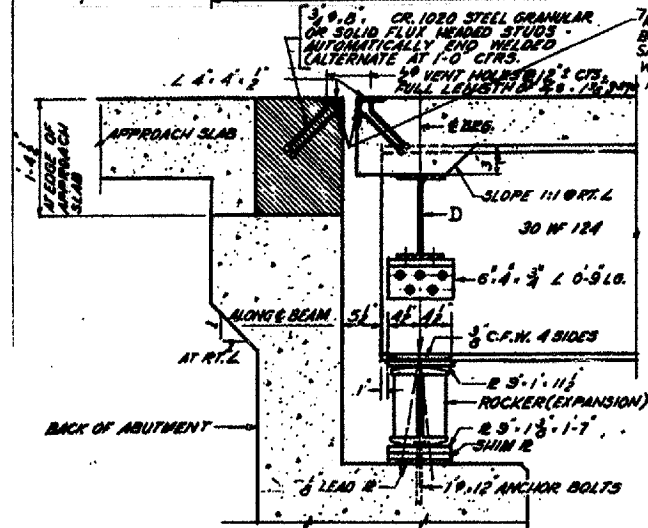
| BEAM NO. | ABUT 1 | PIER 1 | PIER 2 | PIER 3 | ABUT 2 |
|----------|--------|--------|--------|--------|--------|
| 1        | -      | -      | -      | -      | -      |
| 2        | 1/2    | 1/2    | 1/2    | 1/2    | 1/2    |
| 3        | -      | -      | -      | -      | -      |
| 4        | 1/2    | 1/2    | 1/2    | 1/2    | 1/2    |
| 5        | -      | -      | -      | -      | -      |
| 6        | -      | -      | -      | -      | -      |
| 7        | 1/2    | 1/2    | 1/2    | 1/2    | 1/2    |
| 8        | -      | -      | -      | -      | -      |
| 9        | 1/2    | 1/2    | 1/2    | 1/2    | 1/2    |
| 10       | -      | -      | -      | -      | -      |



PINTLE DETAIL

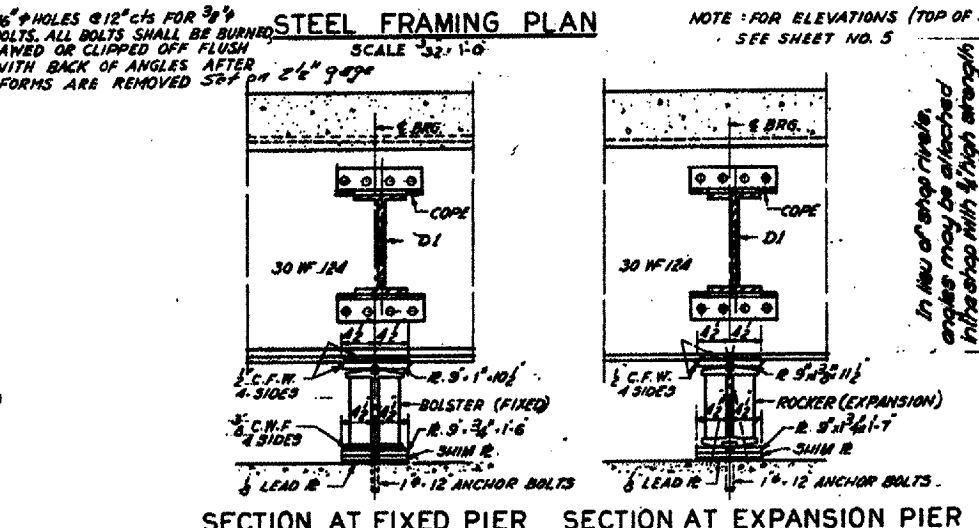
EXPANSION DETAIL

STUD DETAIL



SECTION AT ABUTMENT

SCALE: 1/2\"/>

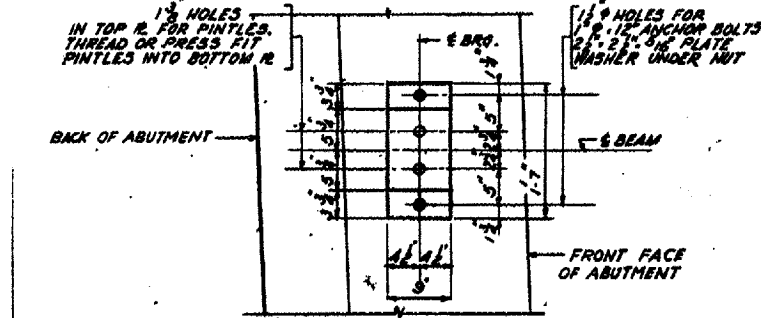


SECTION AT FIXED PIER

SECTION AT EXPANSION PIER

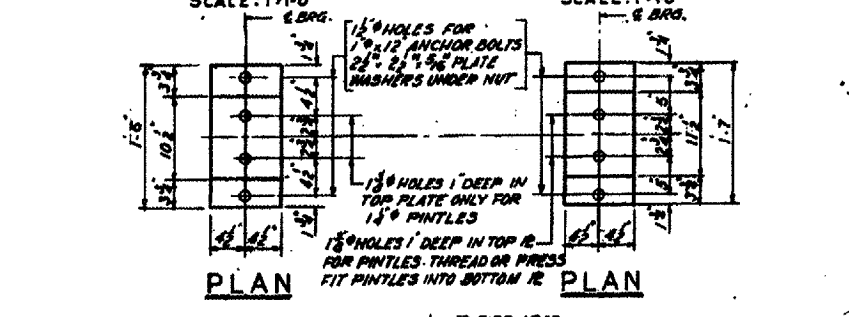
SCALE: 1/2\"/>

SCALE: 1/2\"/>



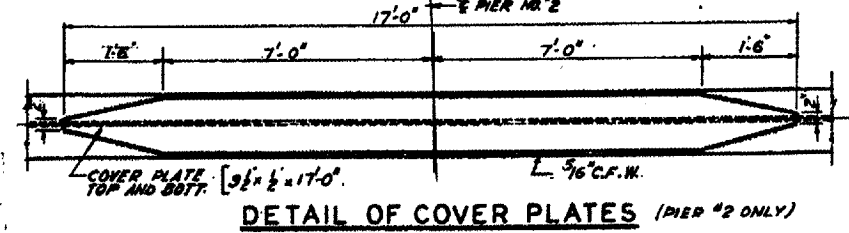
PLAN

SCALE: 1/2\"/>

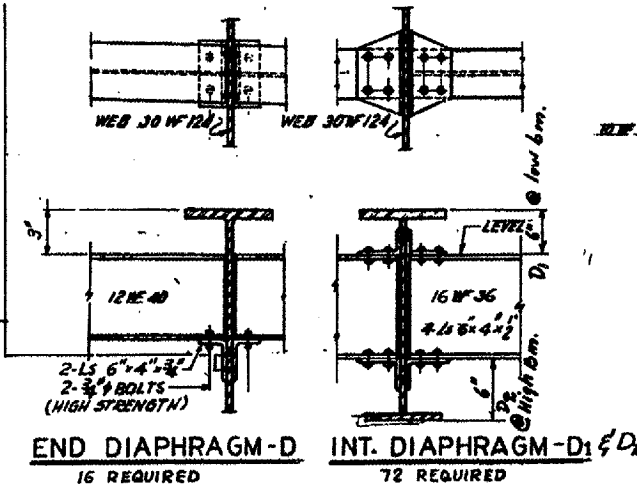


PLAN

PLAN



DETAIL OF COVER PLATES (PIER #2 ONLY)

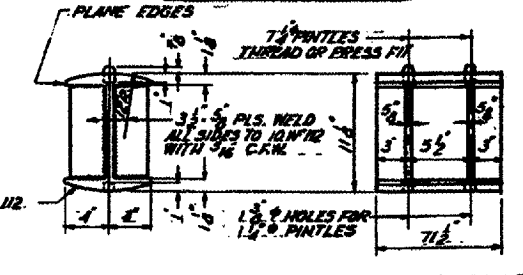


END DIAPHRAGM-D

INT. DIAPHRAGM-D1 & D2

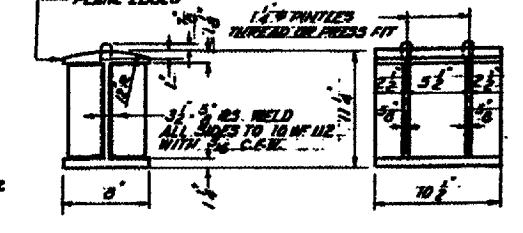
16 REQUIRED

72 REQUIRED

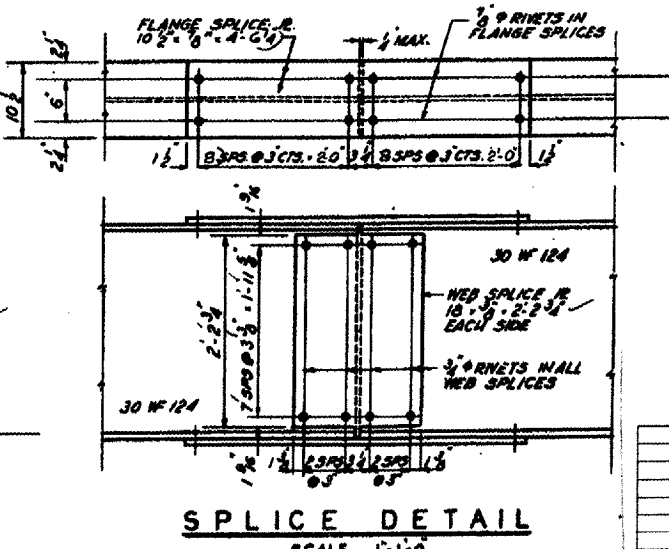


ROCKER DETAIL AT EXP. BEARING

SCALE: 1/2\"/>



BOLSTER DETAIL AT FIXED BEARING



SPlice DETAIL

SCALE: 1/2\"/>

NOTE: FOR SPlice DETAIL ALL RIVET HOLES TO BE REAMED WITH ALL PARTS ASSEMBLED TO GRADE AND ALL PARTS MATCH MARKED

**Bearings and Anchorages**  
The location of the anchor bolts and vertical alignment of the expansion bearings shall be adjusted to the temperature of the time of erection. See Art. 5.4.907

| REVISIONS | NAME | DATE |
|-----------|------|------|
|           |      |      |
|           |      |      |
|           |      |      |
|           |      |      |
|           |      |      |
|           |      |      |
|           |      |      |
|           |      |      |
|           |      |      |
|           |      |      |

ILLINOIS DEPARTMENT OF TRANSPORTATION  
**EXISTING STRUCTURE PLANS FOR INFORMATION ONLY**  
**BRIDGE NO. 1**  
**S.N. 038-0048**

VERT. SCALE: HORIZ. DATE: 01/10/05

DRAWN BY: RW  
CHECKED BY:  

DESIGNED BY: A.M.  
DRAWN BY: A.M.  
CHECKED BY: P.X.  
IN CHARGE: P.X.

Date: 01/10/05  
bridgepainting05/2005-1/details.dgn

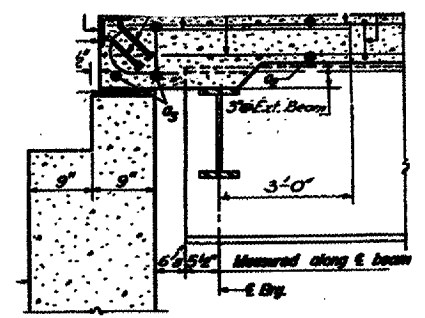
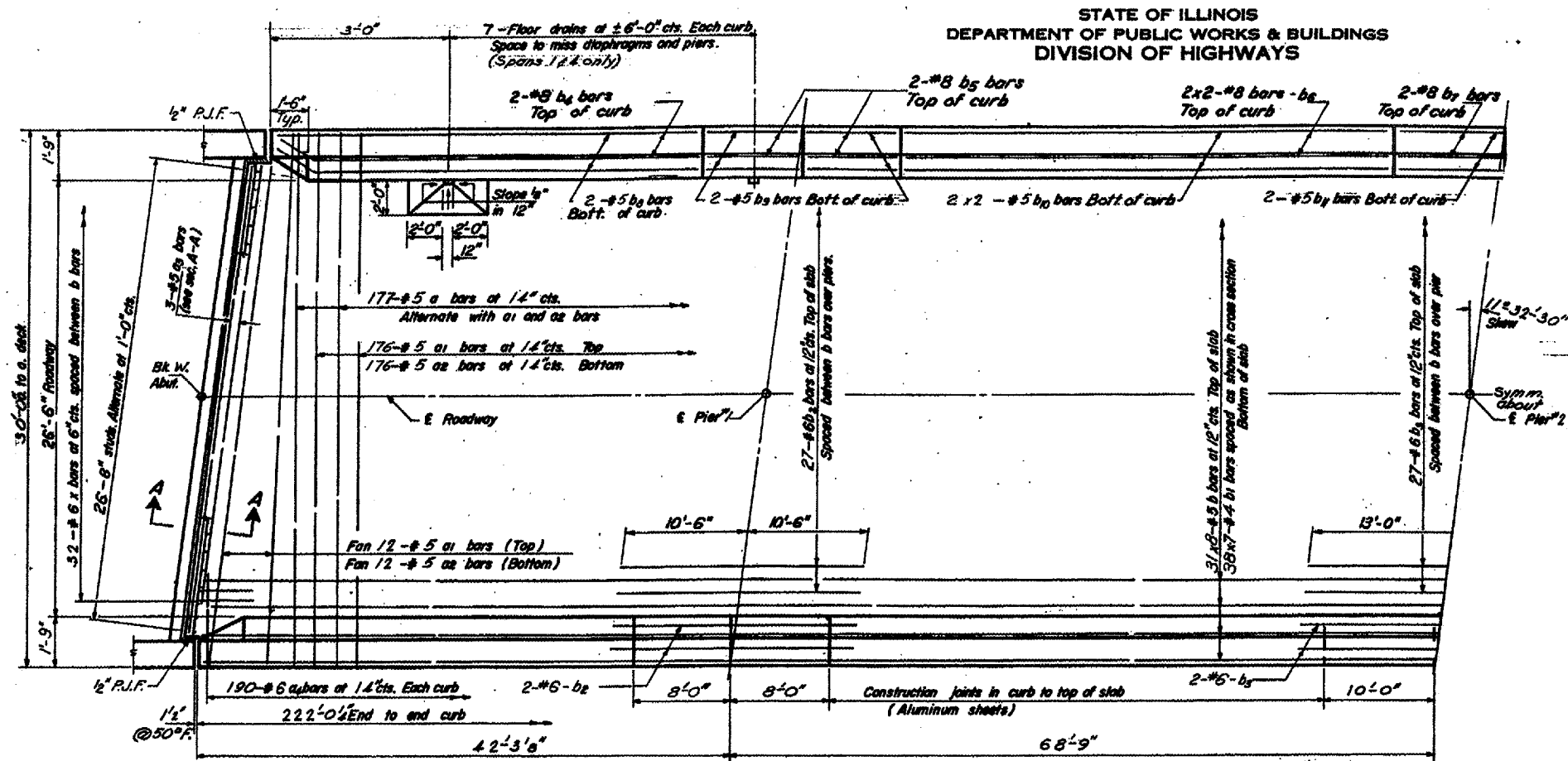






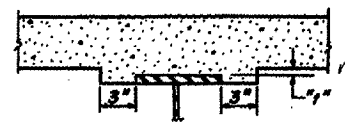
| F.A.I. RTE.         | SECTION                    | COUNTY                    | TOTAL SHEET NO. |
|---------------------|----------------------------|---------------------------|-----------------|
| 57                  | D-3 BRIDGE PAINTING 2005-1 | IROQUOIS                  | 16              |
| FED. ROAD DIST. NO. |                            | ILLINOIS FED. AID PROJECT |                 |

STATE OF ILLINOIS  
DEPARTMENT OF PUBLIC WORKS & BUILDINGS  
DIVISION OF HIGHWAYS

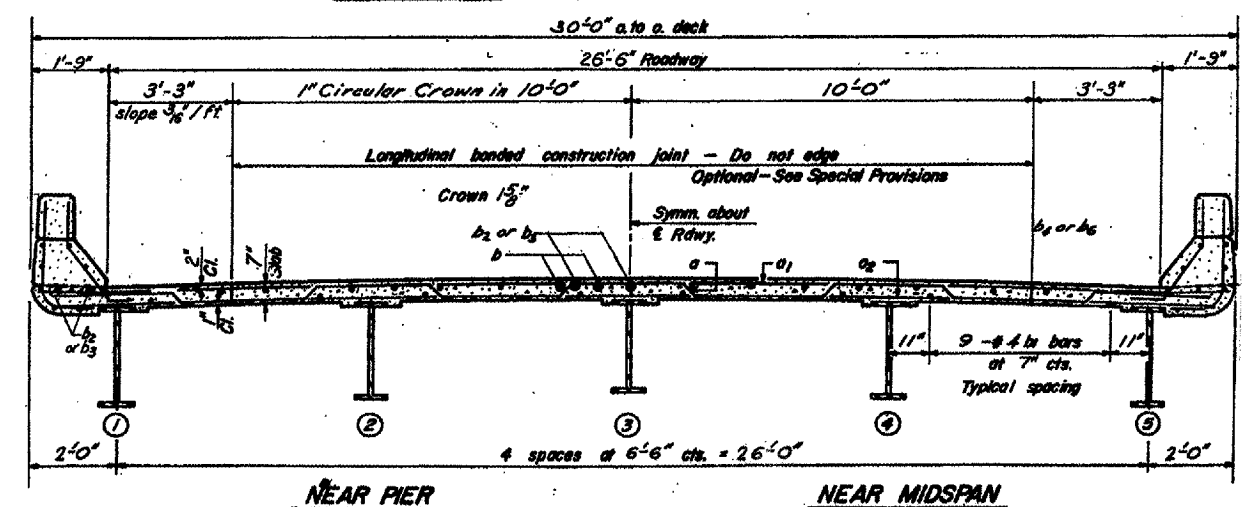


HALF PLAN

Note:  
Bars indicated thus 20x3-#5 etc.  
Indicates 20 lines of bars with 3 lengths per line.  
Min bar laps = 20 dia.



**STANDARD FILLET DETAIL**  
To determine "f": After all structural steel has been erected, elevations of the top flanges of the beams shall be taken at intervals shown on sheet 2. These elevations subtracted from the "Grade Elevations Adjusted for Dead Load Deflections" shown on sheet 2, minus slab thickness, equals the fillet height "f" above top of beam.



| REVISIONS |      |
|-----------|------|
| NAME      | DATE |
|           |      |
|           |      |
|           |      |
|           |      |
|           |      |
|           |      |
|           |      |
|           |      |
|           |      |

ILLINOIS DEPARTMENT OF TRANSPORTATION  
**EXISTING STRUCTURE PLANS  
FOR INFORMATION ONLY**  
**BRIDGE NO. 2**  
**S.N. 038-0082**

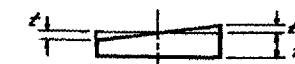
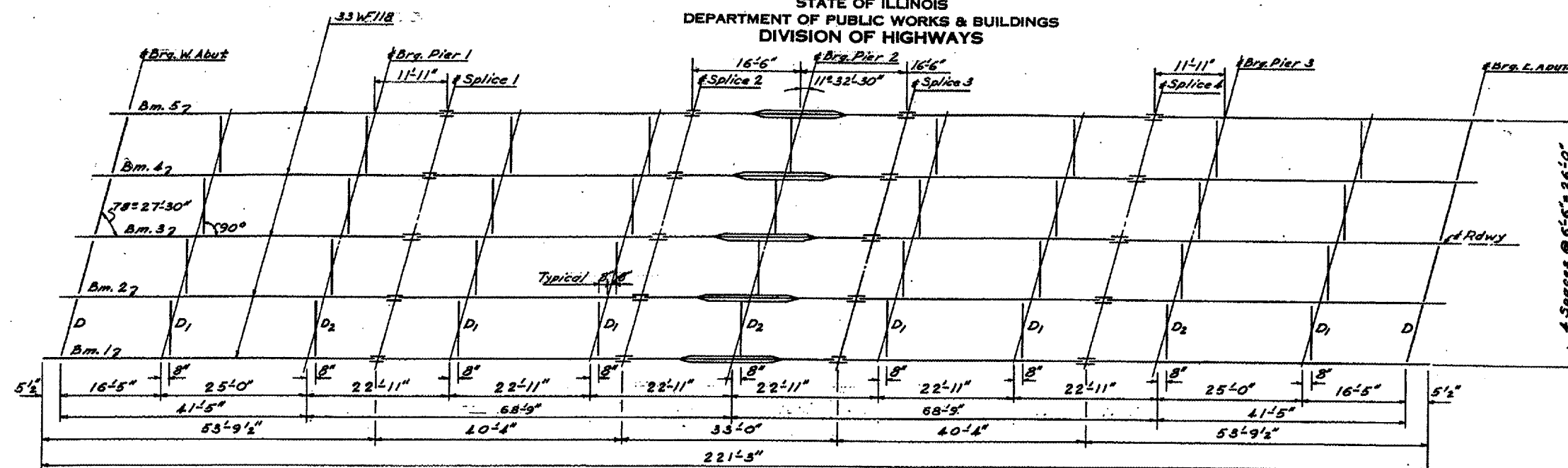
VERT. SCALE: HORIZ. SCALE: 1" = 10'-0"  
DATE: 01/10/05

DRAWN BY RW  
CHECKED BY

Date: 01/10/05  
bridgepaint05/2005-1/det.clls.dgn

| F.A.I. RTE.         | SECTION                    | COUNTY                    | TOTAL SHEETS |
|---------------------|----------------------------|---------------------------|--------------|
| 57                  | D-3 BRIDGE PAINTING 2005-1 | IROQUOIS                  | 16           |
| FED. ROAD DIST. NO. |                            | ILLINOIS FED. AID PROJECT | 10           |

STATE OF ILLINOIS  
DEPARTMENT OF PUBLIC WORKS & BUILDINGS  
DIVISION OF HIGHWAYS

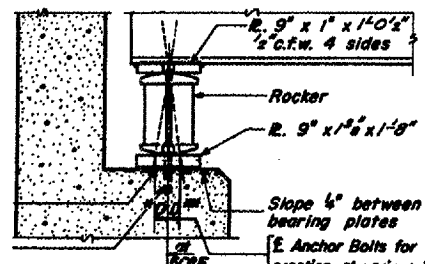


TOP PLATE DETAIL

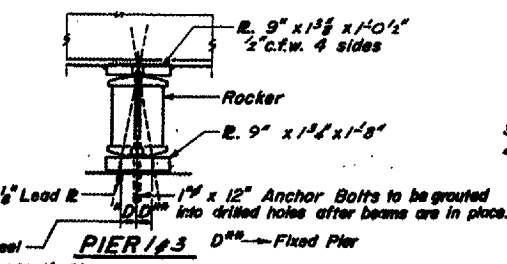
Table of 1/2"

| W/F. Abut.     | Pier 1 & 3     | Pier 2         |
|----------------|----------------|----------------|
| t <sub>1</sub> | t <sub>1</sub> | t <sub>1</sub> |
| 1"             | 1 1/8"         | 1 1/8"         |

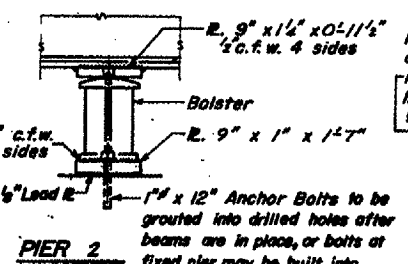
STEEL FRAMING PLAN



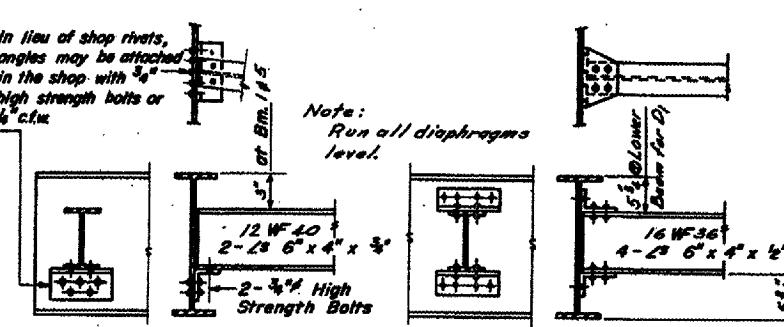
SECTION AT ABUTMENT



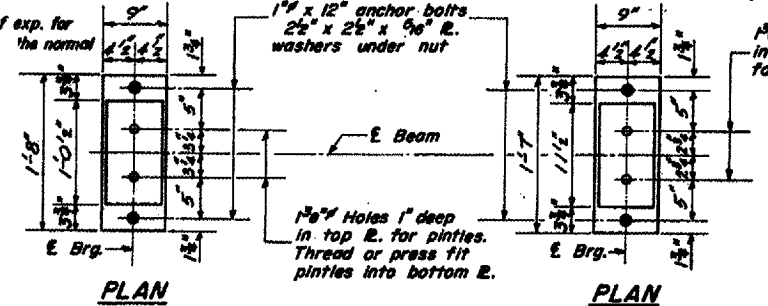
PIER 1 & 3 PLAN



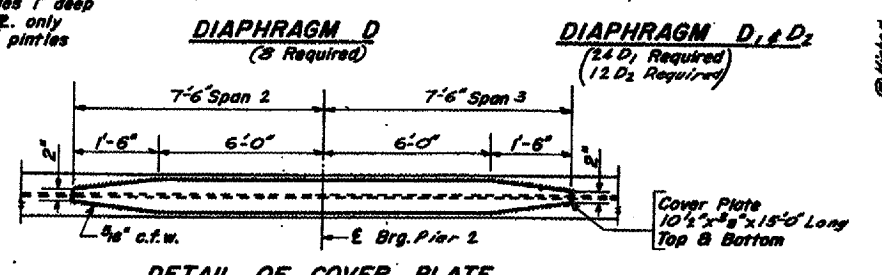
PIER 2 PLAN



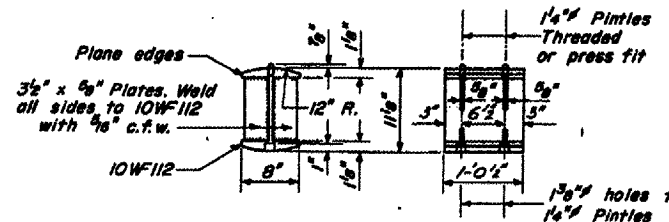
DIAPHRAGM D and DIAPHRAGM D<sub>1</sub> & D<sub>2</sub>



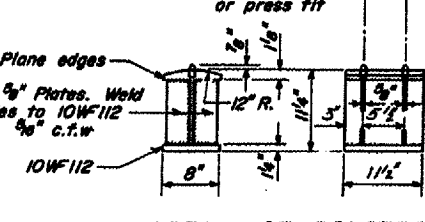
PLAN



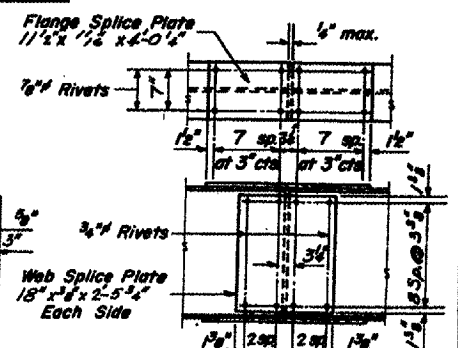
DETAIL OF COVER PLATE



DETAIL OF ROCKER AT PIERS 1 & 3 ABUTS (20 Req'd)



DETAIL OF BOLSTER AT PIER 2 (5 Req'd)



DETAIL OF SPLICE

| REVISIONS |      |
|-----------|------|
| NAME      | DATE |
|           |      |
|           |      |
|           |      |
|           |      |

ILLINOIS DEPARTMENT OF TRANSPORTATION  
**EXISTING STRUCTURE PLANS FOR INFORMATION ONLY**  
**BRIDGE NO. 2**  
**S.N. 038-0082**

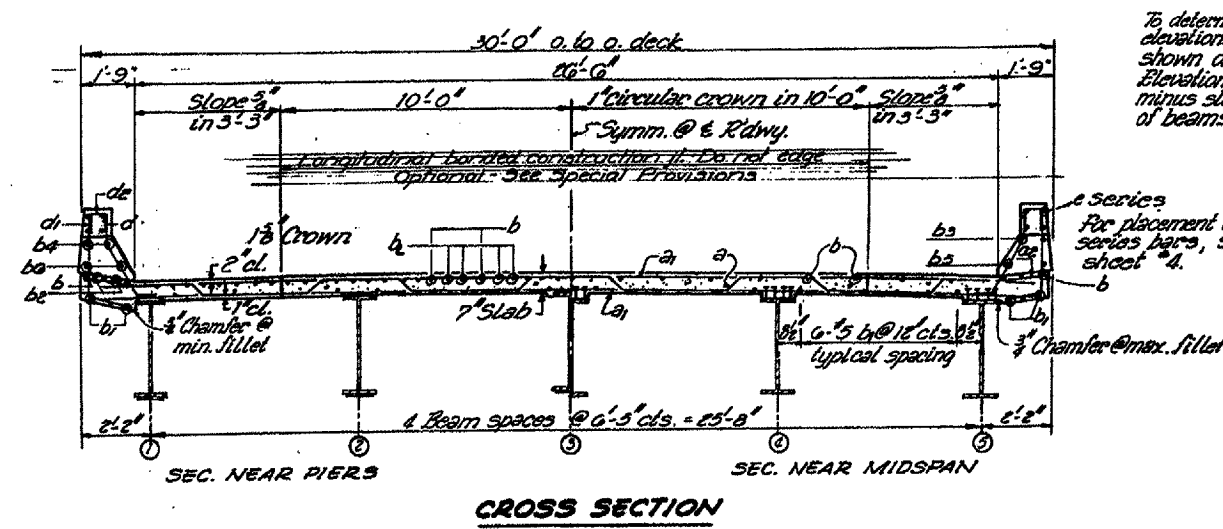
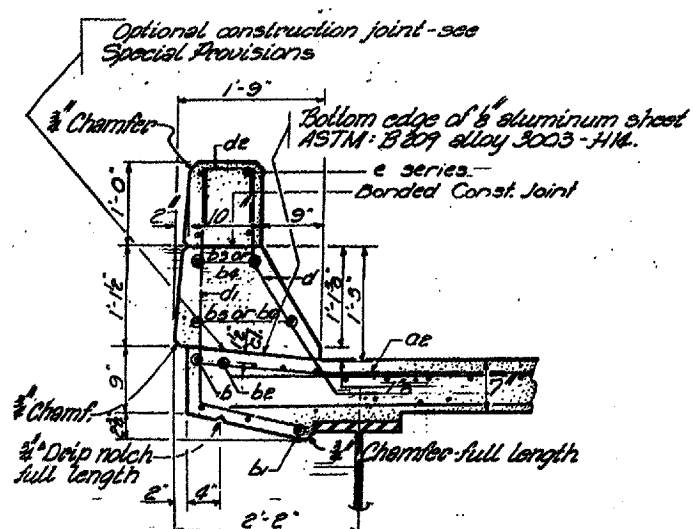
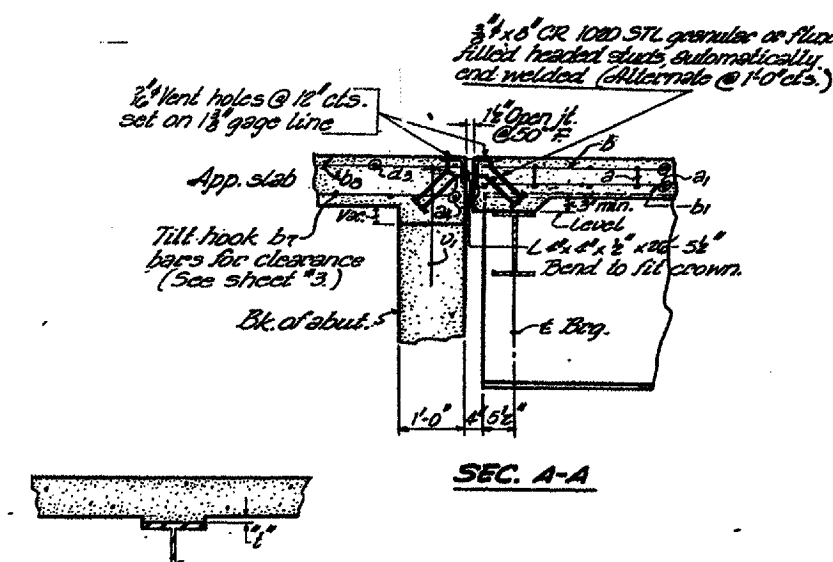
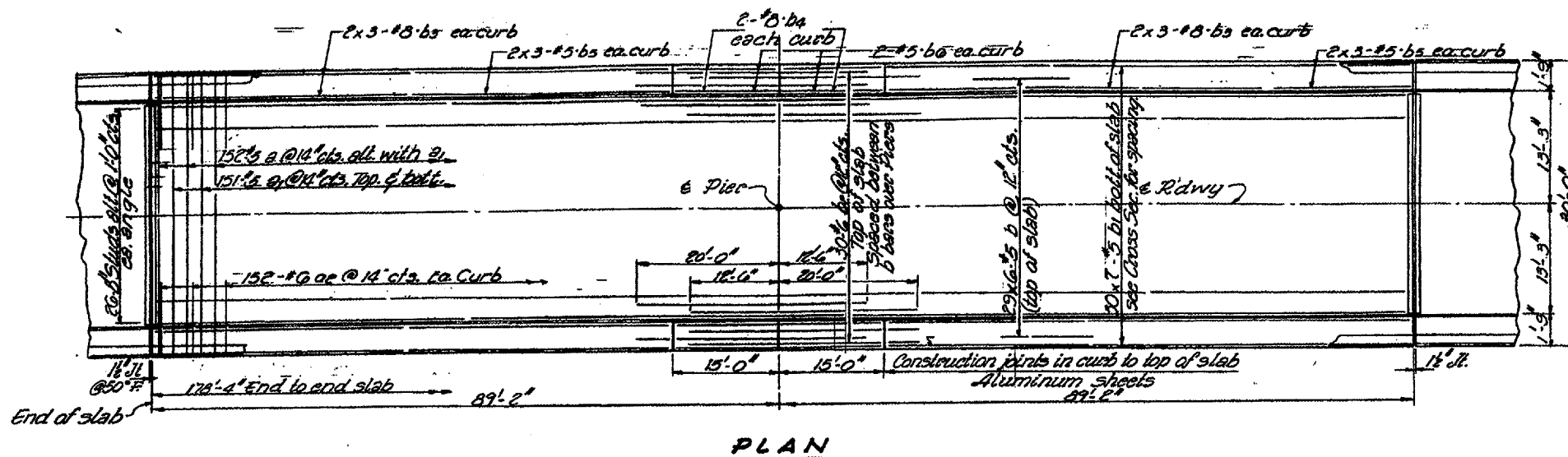
SCALE: VERT. HORIZ. DATE 01/10/05

DRAWN BY RW  
CHECKED BY

Date: 01/10/05  
bridgepaint05/2005-1/details.dgn

|                     |                            |          |                  |           |
|---------------------|----------------------------|----------|------------------|-----------|
| F.A.I. R.T.E.       | SECTION                    | COUNTY   | TOTAL SHEETS     | SHEET NO. |
| 57                  | D-3 BRIDGE PAINTING 2005-1 | IROQUOIS | 16               | 11        |
| FED. ROAD DIST. NO. |                            | ILLINOIS | FED. AID PROJECT |           |

STATE OF ILLINOIS  
DEPARTMENT OF PUBLIC WORKS & BUILDINGS  
DIVISION OF HIGHWAYS



| REVISIONS |      |
|-----------|------|
| NAME      | DATE |
|           |      |
|           |      |
|           |      |
|           |      |
|           |      |
|           |      |
|           |      |
|           |      |
|           |      |

ILLINOIS DEPARTMENT OF TRANSPORTATION  
**EXISTING STRUCTURE PLANS FOR INFORMATION ONLY**  
**BRIDGE NO. 3**  
**S.N. 038-0133**

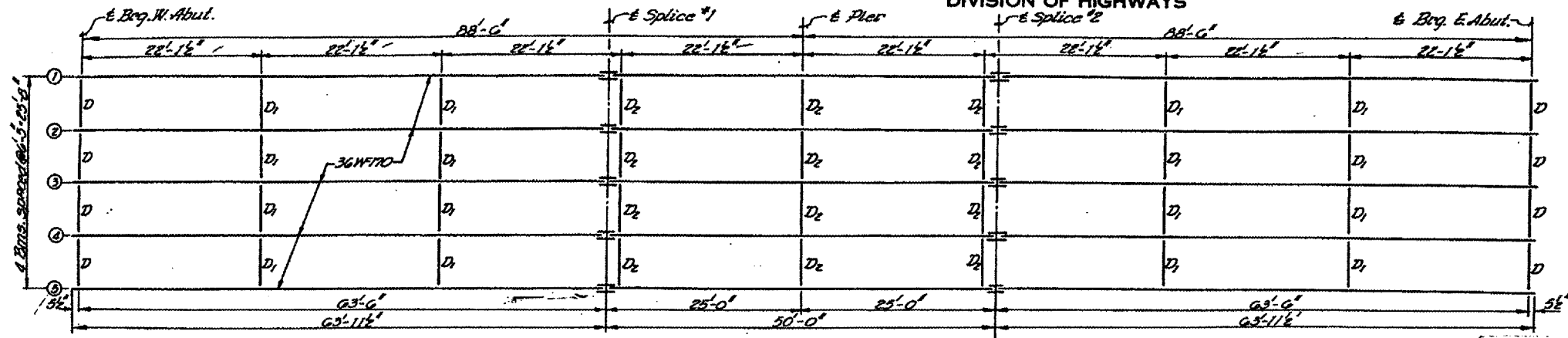
SCALE: VERT. \_\_\_\_\_  
 HORIZ. \_\_\_\_\_  
 DATE 01/10/05

DRAWN BY RW  
 CHECKED BY \_\_\_\_\_

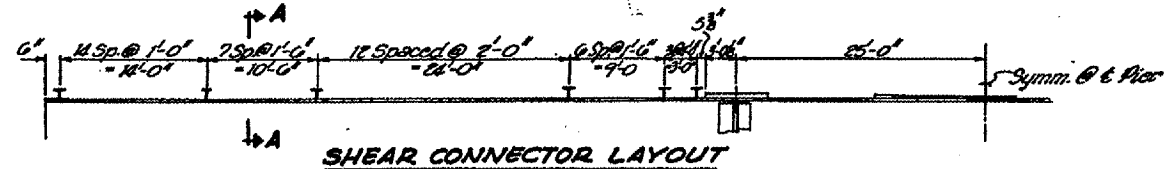
Date: 01/10/05  
 bridgepaint05/2005-1/det.dwg

|                     |                            |                           |              |           |
|---------------------|----------------------------|---------------------------|--------------|-----------|
| F.A.I. RTE.         | SECTION                    | COUNTY                    | TOTAL SHEETS | SHEET NO. |
| 57                  | D-3 BRIDGE PAINTING 2005-1 | IROUOIS                   | 16           | 12        |
| FED. ROAD DIST. NO. |                            | ILLINOIS FED. AID PROJECT |              |           |

STATE OF ILLINOIS  
DEPARTMENT OF PUBLIC WORKS & BUILDINGS  
DIVISION OF HIGHWAYS



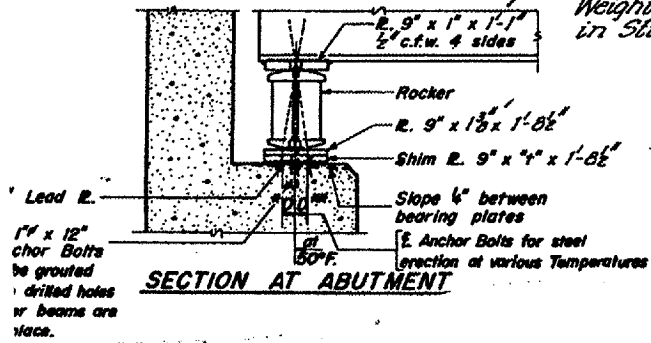
STRUCTURAL STEEL LAYOUT



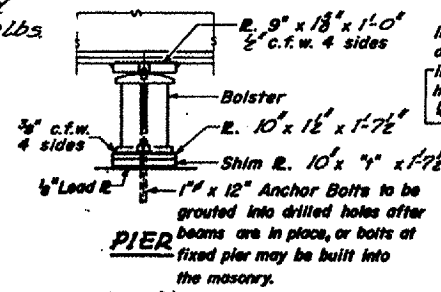
SHEAR CONNECTOR LAYOUT

Note:  
Stud Shear Connectors on the Beam Flanges shall be placed in the field after the Steel has been erected and the deck forms are in place.

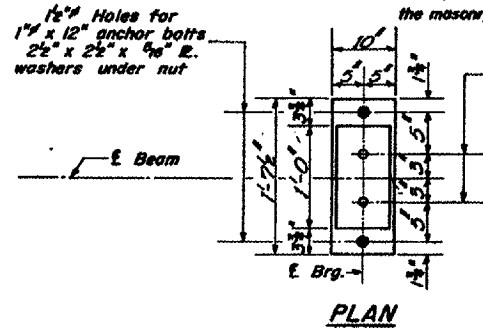
Weight of shear connectors included in Structural Steel. Est. wt. = 1,000 lbs



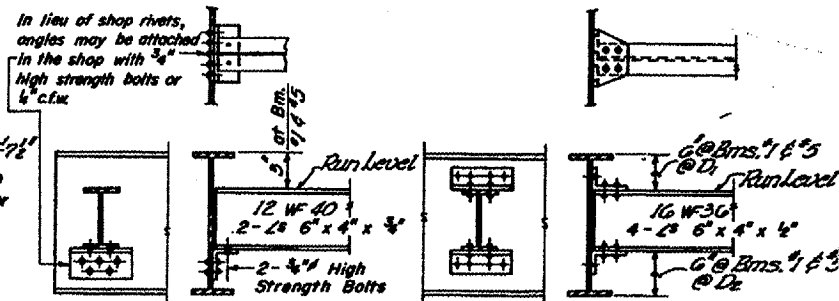
SECTION AT ABUTMENT



PIER

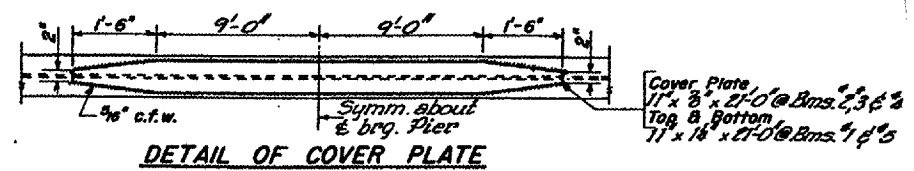


PLAN

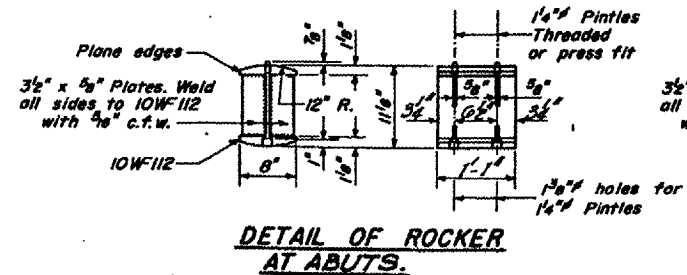


DIAPHRAGM D  
8 Required

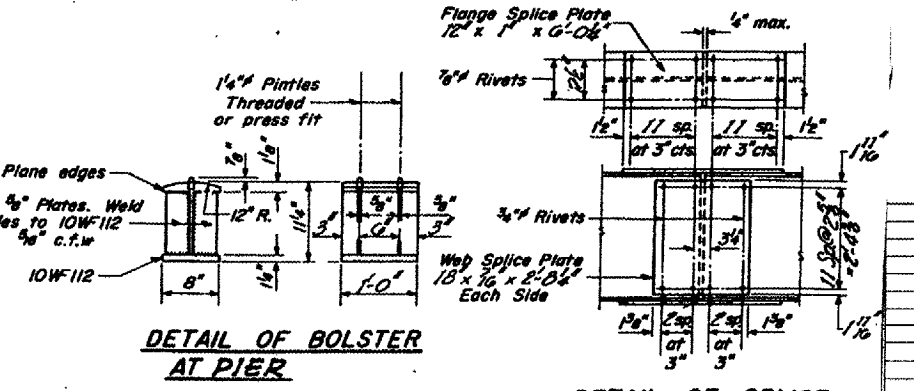
DIAPHRAGM D<sub>1</sub> & D<sub>2</sub>  
10-D<sub>1</sub> Required  
12-D<sub>2</sub>



DETAIL OF COVER PLATE



DETAIL OF ROCKER  
AT ABUTS.



DETAIL OF BOLSTER  
AT PIER

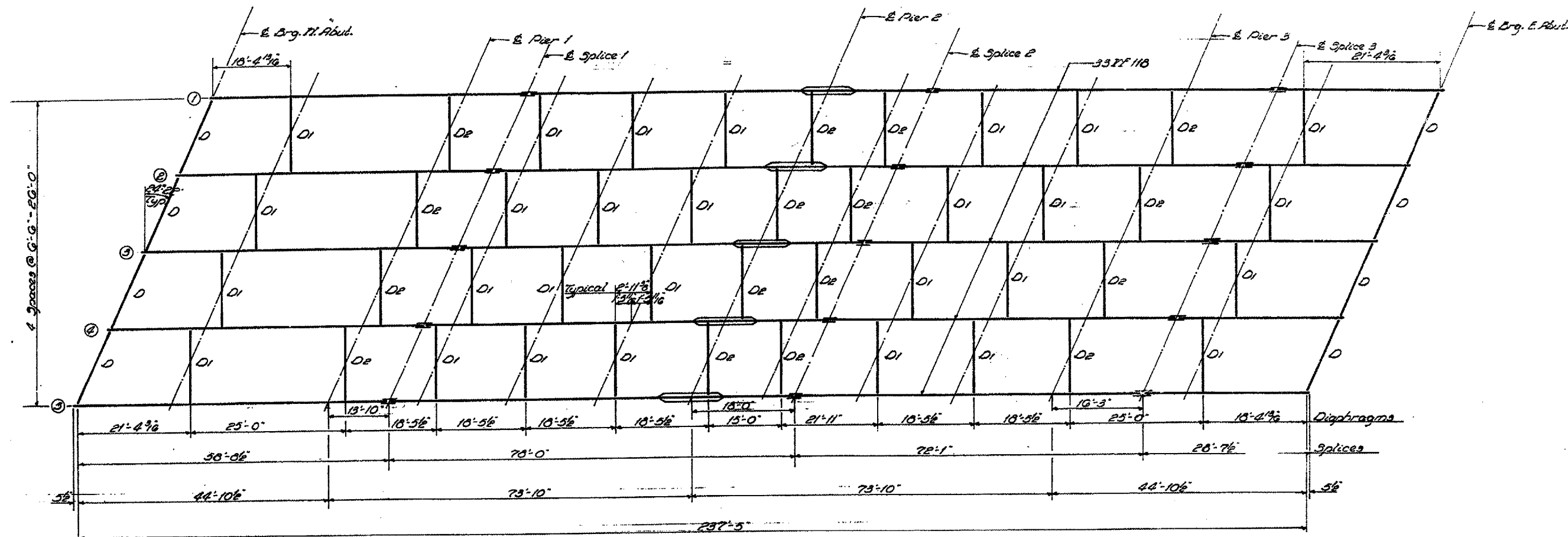
DETAIL OF SPLICE

| REVISIONS |      |
|-----------|------|
| NAME      | DATE |
|           |      |
|           |      |
|           |      |
|           |      |
|           |      |
|           |      |
|           |      |
|           |      |
|           |      |

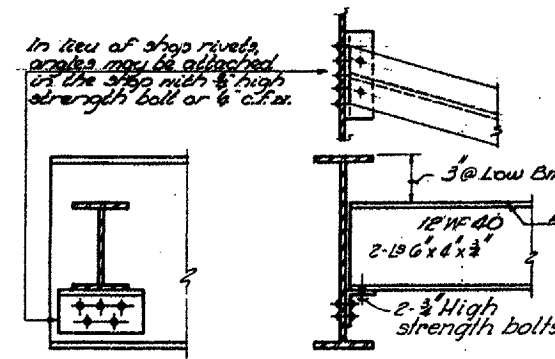
ILLINOIS DEPARTMENT OF TRANSPORTATION  
**EXISTING STRUCTURE PLANS  
FOR INFORMATION ONLY**  
BRIDGE NO. 3  
S.N. 038-0133  
SCALE: VERT. 1" = 8'  
HORIZ. 1" = 10'  
DATE 01/10/05  
DRAWN BY RW  
CHECKED BY

|                     |                            |          |                  |
|---------------------|----------------------------|----------|------------------|
| F.A.I. RTE.         | SECTION                    | COUNTY   | TOTAL SHEET      |
| 57                  | D-3 BRIDGE PAINTING 2005-1 | IRROUOIS | 16               |
| FED. ROAD DIST. NO. |                            | ILLINOIS | FED. AID PROJECT |

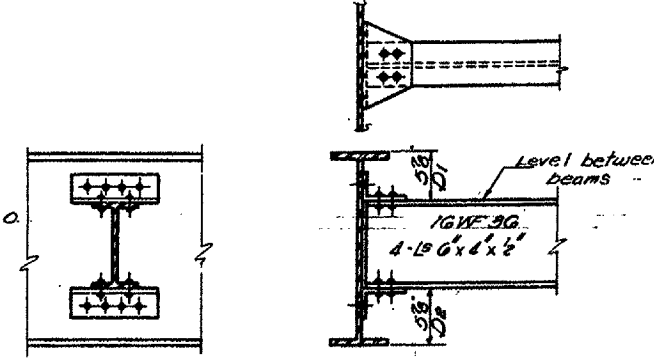
STATE OF ILLINOIS  
DEPARTMENT OF PUBLIC WORKS & BUILDINGS  
DIVISION OF HIGHWAYS



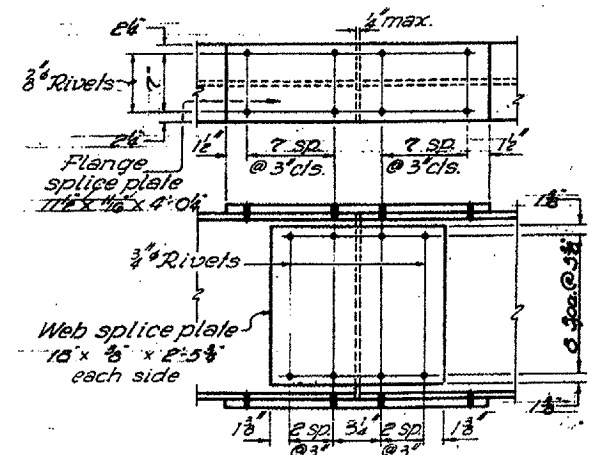
**STRUCTURAL STEEL**



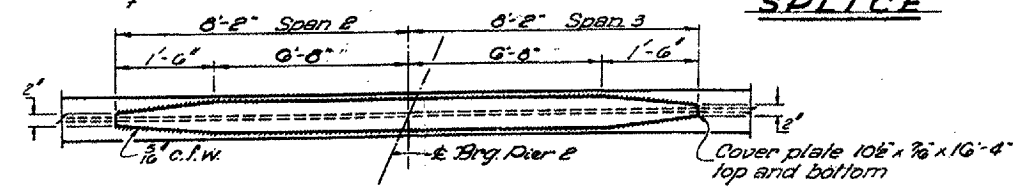
**DIAPHRAGM D**  
3 Required



**DIAPHRAGM D1 & D2**  
20-D1 Required  
16-D2 Req'd.



**SPLICE**



**COVER PLATE**

| REVISIONS |      |
|-----------|------|
| NAME      | DATE |
|           |      |
|           |      |
|           |      |
|           |      |
|           |      |
|           |      |

ILLINOIS DEPARTMENT OF TRANSPORTATION  
**EXISTING STRUCTURE PLANS  
FOR INFORMATION ONLY**  
**BRIDGE NO. 4**  
**S.N. 038-0134**

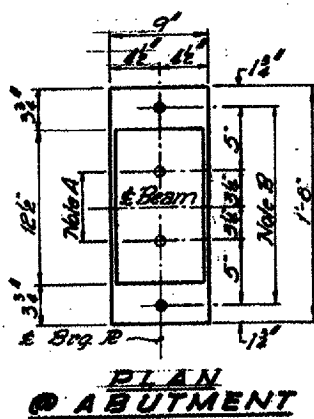
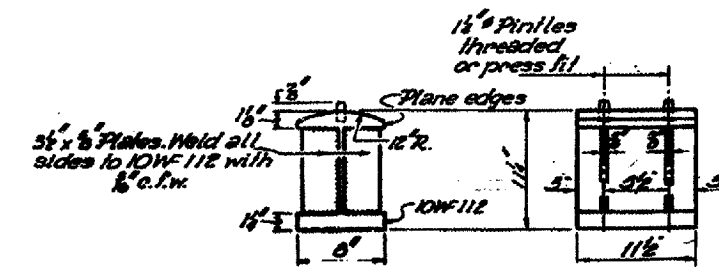
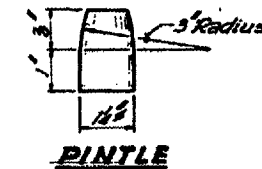
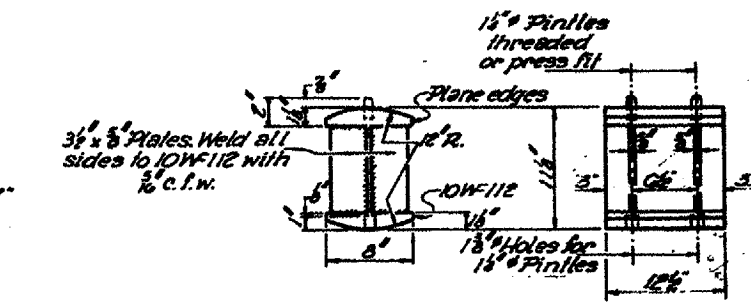
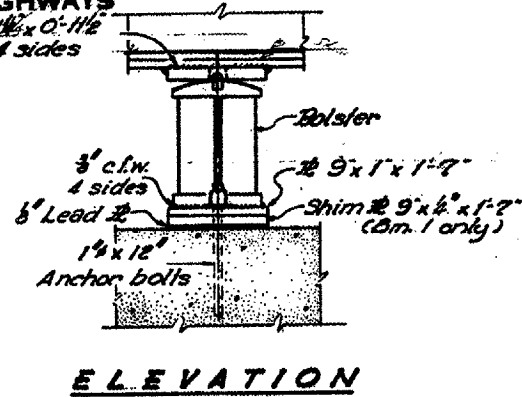
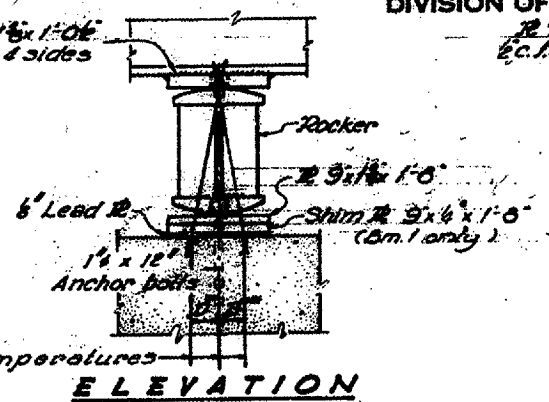
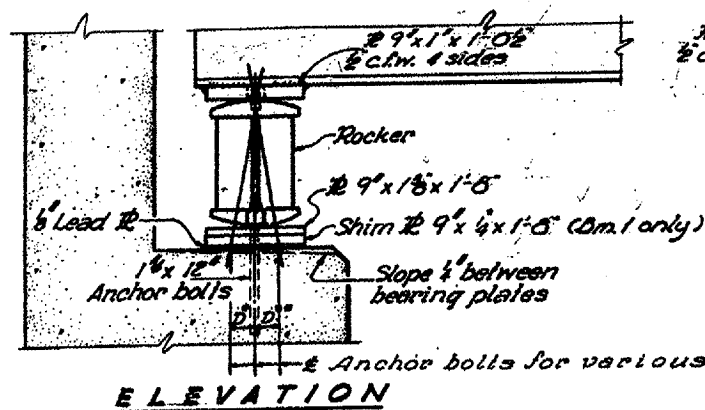
SCALE: VERT. \_\_\_\_\_  
HORIZ. \_\_\_\_\_  
DATE 01/10/05

DRAWN BY RW  
CHECKED BY \_\_\_\_\_

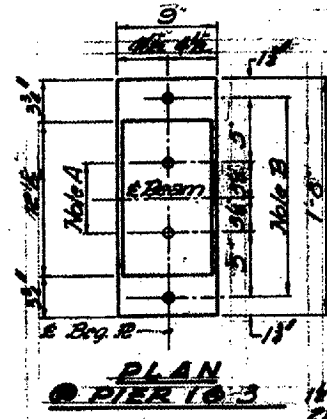
Date: 01/10/05  
brl@paint05/2005-1/details.dgn

| F.A.I. RY.          | SECTION                    | COUNTY                    | TOTAL SHEETS | SHEET NO. |
|---------------------|----------------------------|---------------------------|--------------|-----------|
| 57                  | D-3 BRIDGE PAINTING 2005-1 | IROQUOIS                  | 16           | 14        |
| FED. ROAD DIST. NO. |                            | ILLINOIS FED. AID PROJECT |              |           |

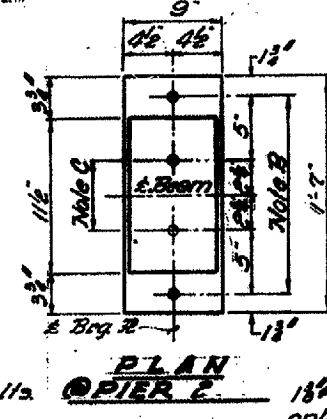
STATE OF ILLINOIS  
DEPARTMENT OF PUBLIC WORKS & BUILDINGS  
DIVISION OF HIGHWAYS



Note A  
1 1/2" Holes - 1" deep in top flange for pintles. Thread or press fit pintles into bottom flange.



Note B  
1 1/2" Holes for 1" anchor bolts. 2 1/2" x 2 1/2" x 1/2" R. Washer under nut.



Note C  
1 1/2" Holes - 1" deep in top flange only for 1 1/2" pintles.

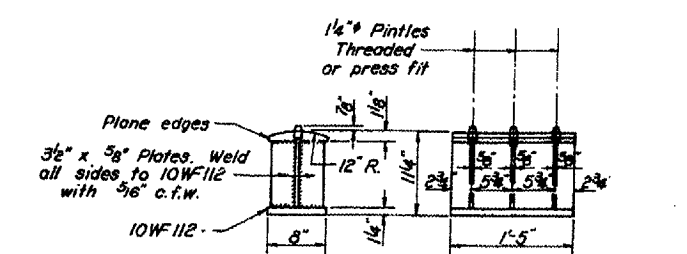
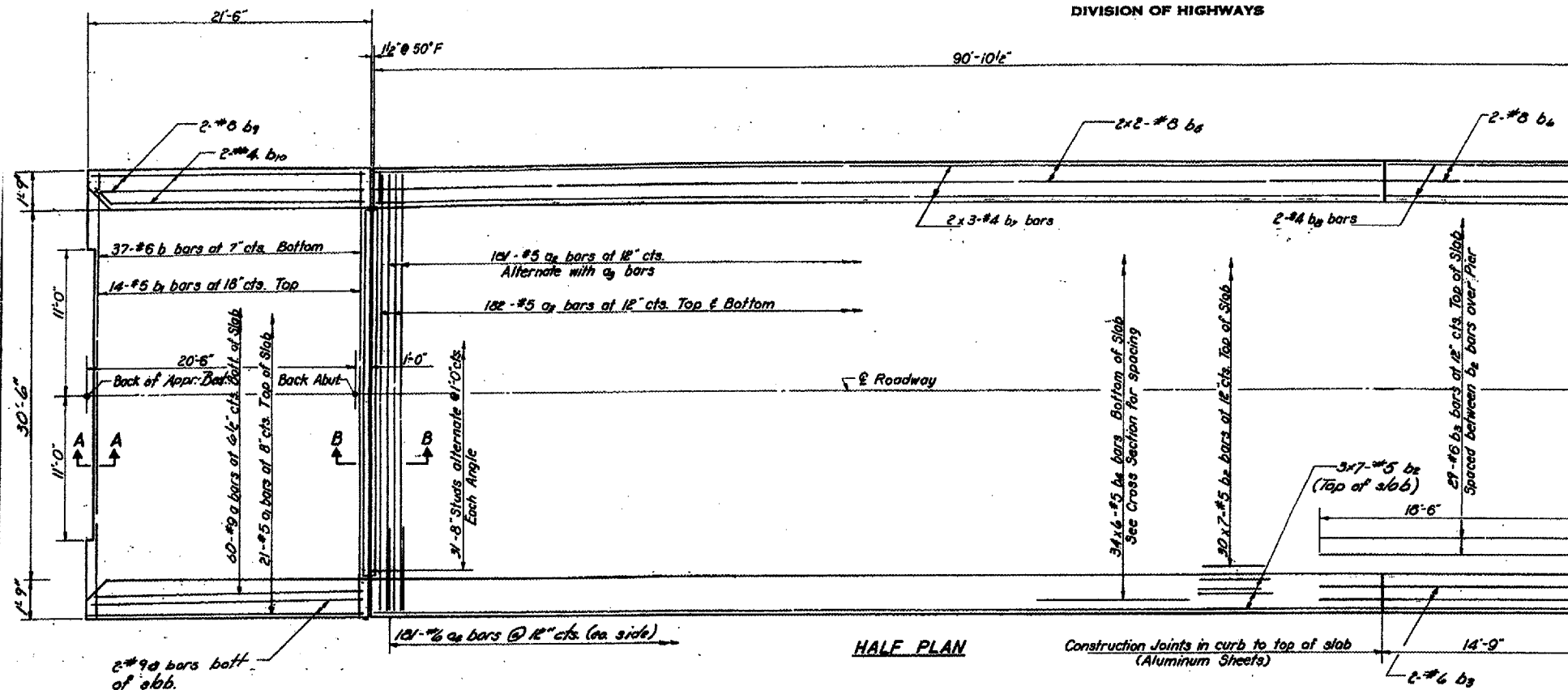
**BEARING ASSEMBLY DETAILS**

| REVISIONS |      |
|-----------|------|
| NAME      | DATE |
|           |      |
|           |      |
|           |      |
|           |      |
|           |      |
|           |      |
|           |      |
|           |      |
|           |      |
|           |      |

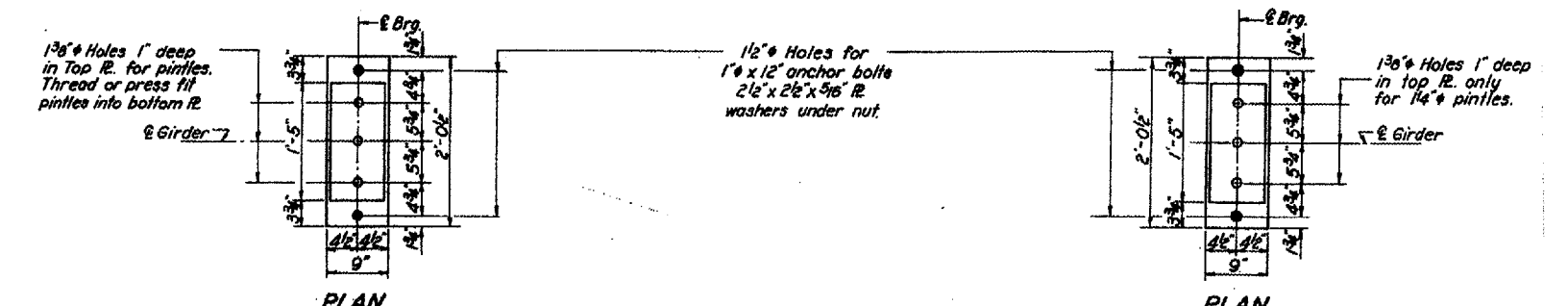
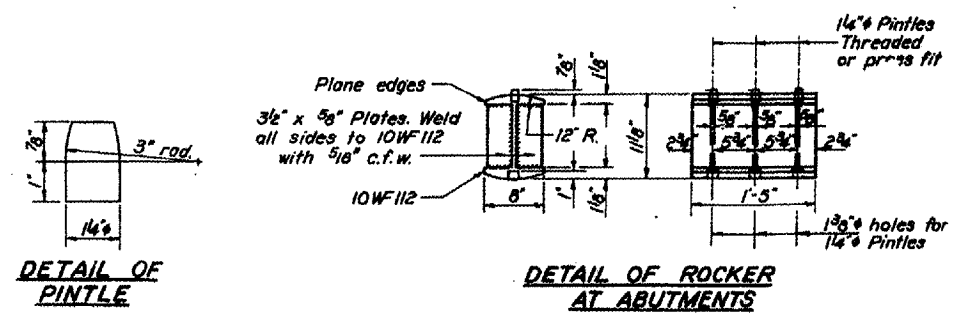
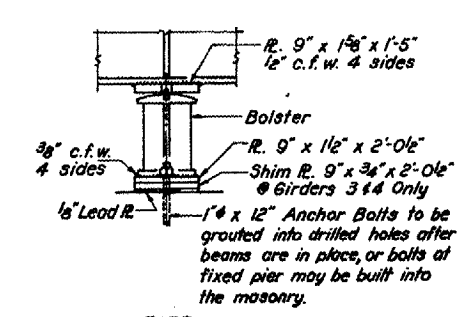
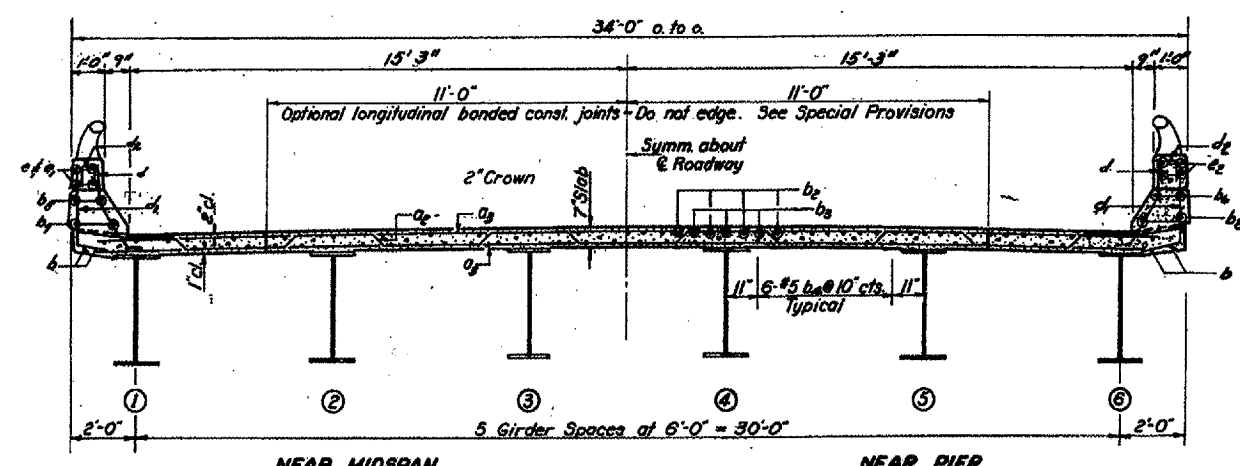
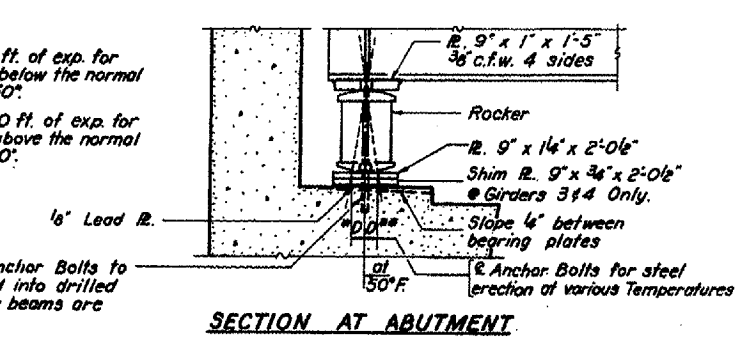
ILLINOIS DEPARTMENT OF TRANSPORTATION  
**EXISTING STRUCTURE PLANS  
FOR INFORMATION ONLY**  
**BRIDGE NO. 4  
S.N. 038-0134**  
SCALE: VERT.      DRAWN BY RW  
      HORIZ.        CHECKED BY  
DATE: 01/10/05

|                     |                            |                           |              |           |
|---------------------|----------------------------|---------------------------|--------------|-----------|
| F.A.I. RTE.         | SECTION                    | COUNTY                    | TOTAL SHEETS | SHEET NO. |
| 57                  | D-3 BRIDGE PAINTING 2005-1 | IROQUOIS                  | 16           | 15        |
| FED. ROAD DIST. NO. |                            | ILLINOIS FED. AID PROJECT |              |           |

STATE OF ILLINOIS  
DEPARTMENT OF PUBLIC WORKS & BUILDINGS  
DIVISION OF HIGHWAYS



\*D = 1/8" / 100 ft. of exp. for every 15° below the normal temp. of 50°.  
 D\*\* = 1/8" / 100 ft. of exp. for every 15° above the normal temp. of 50°.



| REVISIONS |  | DATE |  |
|-----------|--|------|--|
| NAME      |  |      |  |
|           |  |      |  |
|           |  |      |  |
|           |  |      |  |
|           |  |      |  |
|           |  |      |  |

ILLINOIS DEPARTMENT OF TRANSPORTATION  
**EXISTING STRUCTURE PLANS FOR INFORMATION ONLY**  
**BRIDGE NO. 5**  
**S.N. 038-0077**

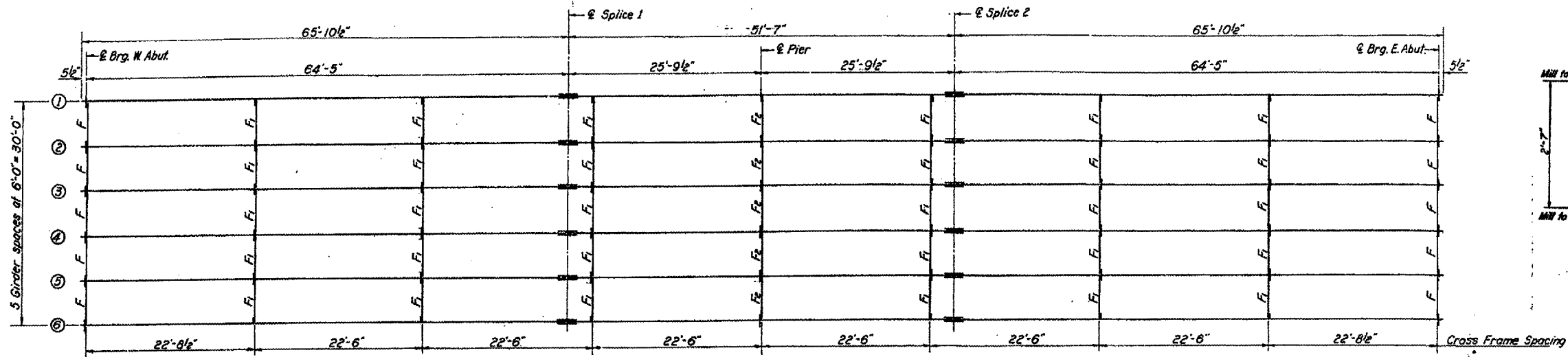
SCALE: VERT.      DRAWN BY RW  
 HORIZ.            CHECKED BY  
 DATE: 01/10/05

Date: 01/10/05  
 Bridgepaint05/2005-1/Details.dgn

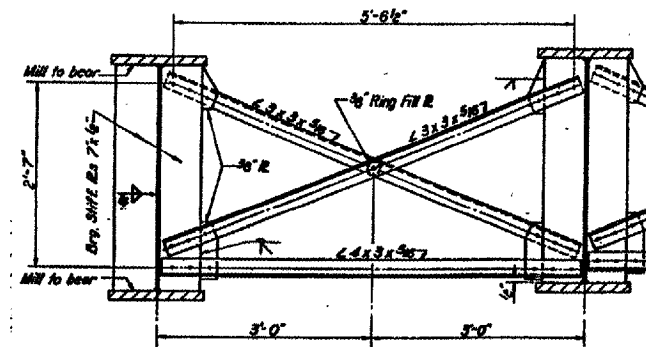


|                     |                            |                           |              |           |
|---------------------|----------------------------|---------------------------|--------------|-----------|
| F.A.I. RTE.         | SECTION                    | COUNTY                    | TOTAL SHEETS | SHEET NO. |
| 57                  | 0-3 BRIDGE PAINTING 2005-1 | IRROUOIS                  | 16           | 16        |
| FED. ROAD DIST. NO. |                            | ILLINOIS FED. AID PROJECT |              |           |

STATE OF ILLINOIS  
DEPARTMENT OF PUBLIC WORKS & BUILDINGS  
DIVISION OF HIGHWAYS

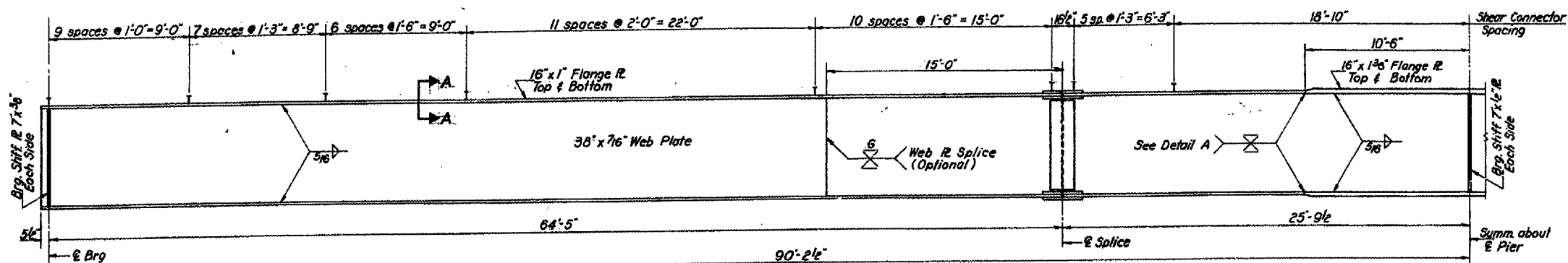


GIRDER LAYOUT

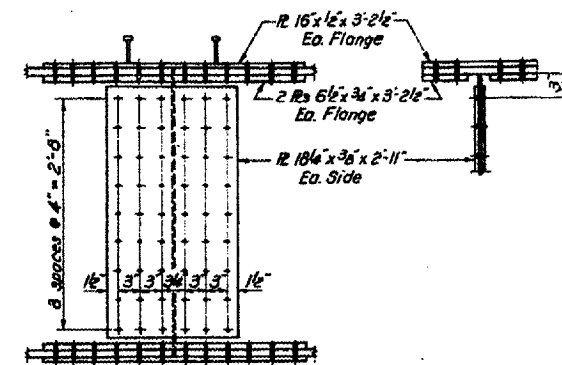


PIER FRAME - E2

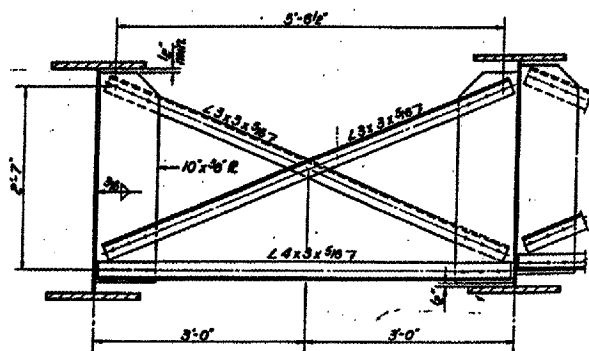
STATE OF ILLINOIS  
DEPARTMENT OF PUBLIC WORKS & BUILDINGS  
DIVISION OF HIGHWAYS



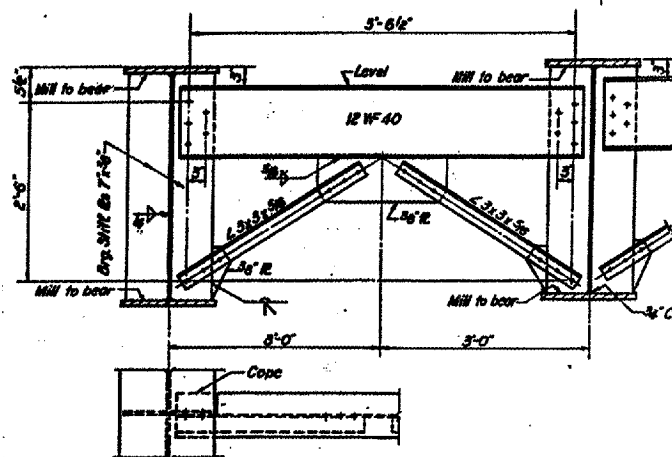
HALF GIRDER ELEVATION



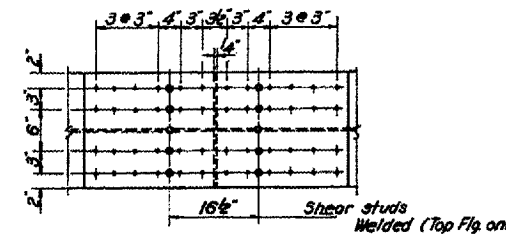
DETAILS OF SPLICE



INTERIOR FRAME - E1



END FRAME - F



| REVISIONS |      |
|-----------|------|
| NAME      | DATE |
|           |      |
|           |      |
|           |      |
|           |      |
|           |      |
|           |      |
|           |      |
|           |      |
|           |      |

ILLINOIS DEPARTMENT OF TRANSPORTATION  
**EXISTING STRUCTURE PLANS  
FOR INFORMATION ONLY**  
**BRIDGE NO. 5**  
**S.N. 038-0077**

SCALE: VERT.  
HORIZ.  
DATE 01/10/05

DRAWN BY RW  
CHECKED BY