

F.A. RTE.	SECTION	COUNTY	TOTAL SHEETS	SHEET NO.
74	(72-7)R-3	PEORIA	1360	131
STA. 143+000.000		TO STA. 143+300.000		
FED. ROAD DIST. NO.		ILLINOIS FED. AID PROJECT		

PAVEMENT MARKING LEGEND

- (1X) 100 (4) SOLID
- (2X) 150 (6) SOLID
- (3X) 200 (8) SOLID
- (4X) 300 (12) SOLID
- (5X) 600 (24) SOLID
- (6X) 100 (4) DOUBLE SOLID
- (7X) 100 (4) SKIP DASH
- (8X) 150 (6) SKIP DASH
- (9X) 200 (8) SKIP DASH
- (10X) 200 (8) DOTTED
- (11X) LETTERS AND ARROWS

RAISED REFLECTIVE PAVEMENT MARKERS

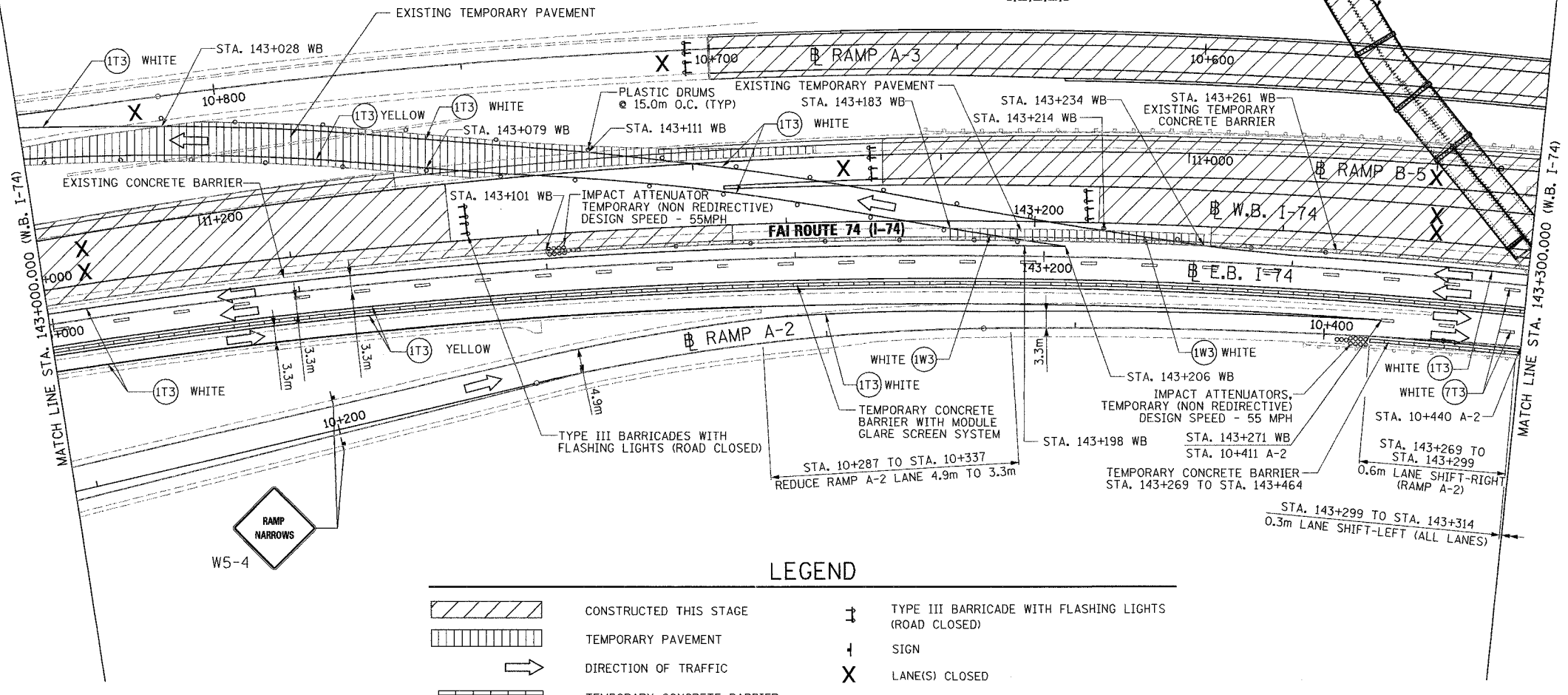
- 1 ONE-WAY CRYSTAL MARKER AT 24.38 m(80') CENTERS
- 2 ONE-WAY CRYSTAL MARKER AT 12.19 m(40') CENTERS
- 3 ONE-WAY CRYSTAL MARKER AT 6.10 m(20') CENTERS
- 4 ONE-WAY AMBER MARKER AT 12.19 m(40') CENTERS
- 5 TWO-WAY AMBER MARKER AT 12.19 m(40') CENTERS FOR SPEEDS LESS THAN 45 MPH
- 6 TWO-WAY AMBER MARKER AT 24.38 m(80') CENTERS FOR SPEEDS GREATER THAN 45 MPH

WHERE "X" DESIGNATES:
E = EPOXY — WHITE
P = PAINT — YELLOW
T = THERMOPLASTIC

TP= TEMPORARY PAVEMENT MARKING TAPE
T3= PAVEMENT MARKING TAPE, TYPE III
W3= WET TEMPORARY PAVEMENT MARKING TAPE, TYPE III

All dimensions are in millimeters (Inches) unless otherwise shown.

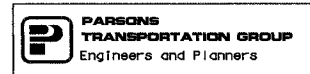
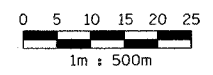
- (1W3) 100 mm SOLID, WET TEMPORARY PAVEMENT MARKING TAPE, TYPE III (WHITE)
WB LT STA. 143+028 TO STA. 143+111
WB RT STA. 143+183 TO STA. 143+198
WB RT STA. 143+214 TO STA. 143+234
- (7T3) 100 mm SKIP DASH, PAVEMENT MARKING TAPE, TYPE III (WHITE)
WB RT STA. 143+000 TO STA. 143+300
WB RT STA. 143+271 TO STA. 143+300
- (1T3) 100 mm SOLID, PAVEMENT MARKING TAPE, TYPE III (WHITE)
WB RT STA. 143+198 TO STA. 143+206
WB RT STA. 143+000 TO STA. 143+028
WB RT STA. 143+000 TO STA. 143+206
WB RT STA. 143+079 TO STA. 143+183
WB RT STA. 143+028 TO STA. 143+214
WB RT STA. 143+234 TO STA. 143+300
WB RT STA. 143+000 TO STA. 143+271
RAMP A-2 LT STA. 10+287 TO STA. 10+411
RAMP A-2 STA. 10+287 TO STA. 10+440
- (1T3) 100 mm SOLID, PAVEMENT MARKING TAPE, TYPE III (YELLOW)
WB RT STA. 143+000 TO STA. 143+300
WB RT STA. 143+000 TO STA. 143+300
WB LT STA. 143+000 TO STA. 143+079



LEGEND

	CONSTRUCTED THIS STAGE		TYPE III BARRICADE WITH FLASHING LIGHTS (ROAD CLOSED)
	TEMPORARY PAVEMENT		SIGN
	DIRECTION OF TRAFFIC		LANE(S) CLOSED
	TEMPORARY CONCRETE BARRIER		PLASTIC DRUM

NOTES:
REMOVE EXISTING TEMPORARY CONCRETE BARRIERS BETWEEN STA. 143+101 TO STA. 143+261 AS PART OF PROVIDING ACCESS TO RAMP A-3.



REVISIONS	
NAME	DATE

ILLINOIS DEPARTMENT OF TRANSPORTATION
MAINTENANCE OF TRAFFIC
FAI ROUTE 74 (I-74 WB)
STAGE 3-1
STA. 143+000.000 - STA. 143+300.000
DRAWN BY CADD
CHECKED BY KJW
DATE 11/12/04