

F.A. RTE.	SECTION	COUNTY	TOTAL SHEETS	SHEET NO.
74	(72-7)R-3	PEORIA	1360	134
STA. 143+650.000		TO STA. 143+950.000		
FED. ROAD DIST. NO.		ILLINOIS	FED. AID PROJECT	

LEGEND

- CONSTRUCTED THIS STAGE
- TEMPORARY PAVEMENT
- DIRECTION OF TRAFFIC
- TEMPORARY CONCRETE BARRIER
- PLASTIC DRUM
- TYPE III BARRICADE WITH FLASHING LIGHTS (ROAD CLOSED)
- SIGN
- LANE(S) CLOSED

PAVEMENT MARKING LEGEND

- (1X) 100 (4) SOLID
- (2X) 150 (6) SOLID
- (3X) 200 (8) SOLID
- (4X) 300 (12) SOLID
- (5X) 600 (24) SOLID
- (6X) 100 (4) DOUBLE SOLID
- (7X) 100 (4) SKIP DASH
- (8X) 150 (6) SKIP DASH
- (9X) 200 (8) SKIP DASH
- (10X) 200 (8) DOTTED
- (11X) LETTERS AND ARROWS

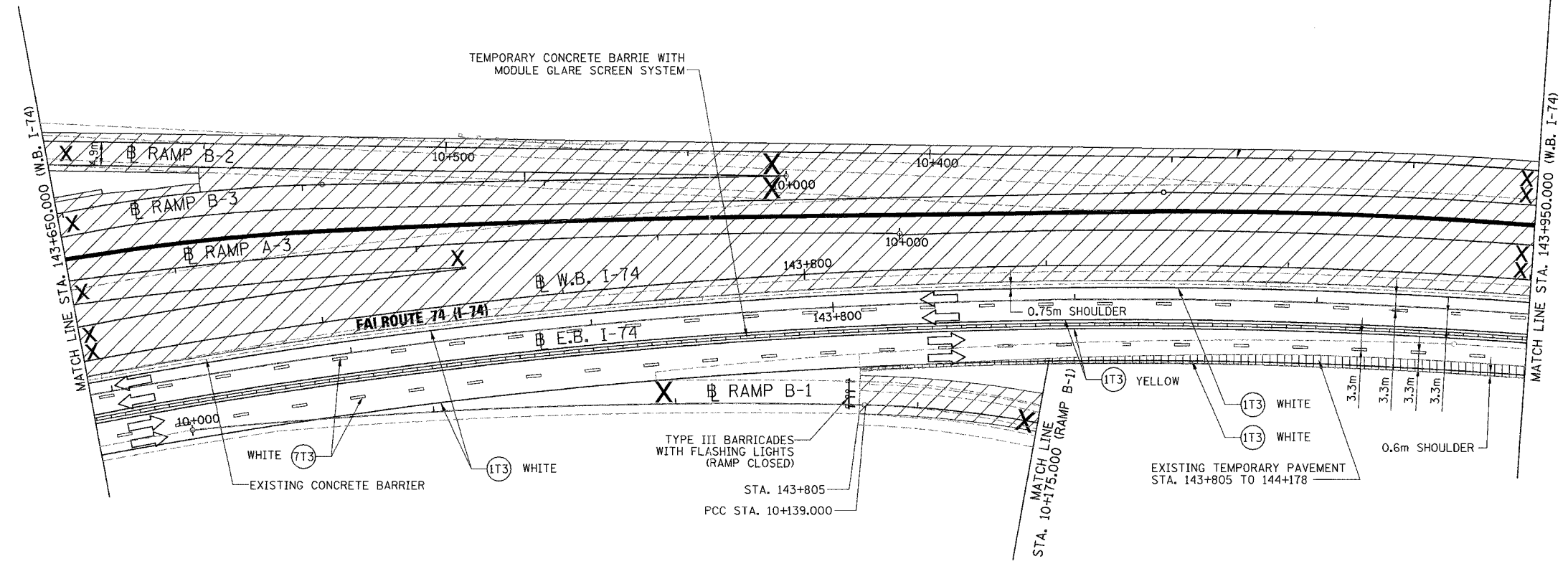
RAISED REFLECTIVE PAVEMENT MARKERS

- 1 < ONE-WAY CRYSTAL MARKER AT 24.38 m(80') CENTERS
- 2 < ONE-WAY CRYSTAL MARKER AT 12.19 m(40') CENTERS
- 3 < ONE-WAY CRYSTAL MARKER AT 6.10 m(20') CENTERS
- 4 < ONE-WAY AMBER MARKER AT 12.19 m(40') CENTERS
- 5 < TWO-WAY AMBER MARKER AT 12.19 m(40') CENTERS FOR SPEEDS LESS THAN 45 MPH
- 6 < TWO-WAY AMBER MARKER AT 24.38 m(80') CENTERS FOR SPEEDS GREATER THAN 45 MPH

WHERE "X" DESIGNATES:
 E = EPOXY
 P = PAINT
 T = THERMOPLASTIC
 TP= TEMPORARY PAVEMENT MARKING TAPE
 T3= PAVEMENT MARKING TAPE, TYPE III
 W3= WET TEMPORARY PAVEMENT MARKING TAPE, TYPE III

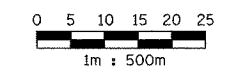
— WHITE
 — YELLOW

All dimensions are in millimeters (inches) unless otherwise shown.



- (7T3) 100 mm SKIP DASH, PAVEMENT MARKING TAPE, TYPE III (WHITE)
 WB RT STA. 143+650 TO STA. 143+950
 WB RT STA. 143+650 TO STA. 143+950
- (1T3) 100 mm SOLID, PAVEMENT MARKING TAPE, TYPE III (WHITE)
 WB RT STA. 143+650 TO STA. 143+950
 WB RT STA. 143+650 TO STA. 143+805
 WB RT STA. 143+805 TO STA. 143+950
- (1T3) 100 mm SOLID, PAVEMENT MARKING TAPE, TYPE III (YELLOW)
 WB RT STA. 143+650 TO STA. 143+950
 WB RT STA. 143+650 TO STA. 143+950

NOTE:
 OUTSIDE SHOULDER ALONG WB TRAFFIC NARROWS TO 0.60 METERS AT LOCATIONS OF EXISTING LIGHT POLE FOUNDATIONS.



PARSONS
 TRANSPORTATION GROUP
 Engineers and Planners

REVISIONS	
NAME	DATE

ILLINOIS DEPARTMENT OF TRANSPORTATION
 MAINTENANCE OF TRAFFIC
 FAI ROUTE 74 (I-74 WB)
 STAGE 3-1
 STA. 143+650.000 - STA. 143+950.000
 DRAWN BY CADD
 CHECKED BY KJW
 DATE 11/12/04