

F.A. RTE.	SECTION	COUNTY	TOTAL SHEETS	SHEET NO.
74	(72-7R-3)	PEORIA	1360	176
STA. 40+175.000 TO STA. 40+480.810				
FED. ROAD DIST. NO.			ILLINOIS	FED. AID PROJECT

PAVEMENT MARKING LEGEND

- 1X 100 (4) SOLID
- 2X 150 (6) SOLID
- 3X 200 (8) SOLID
- 4X 300 (12) SOLID
- 5X 600 (24) SOLID
- 6X 100 (4) DOUBLE SOLID
- 7X 100 (4) SKIP DASH
- 8X 150 (6) SKIP DASH
- 9X 200 (8) SKIP DASH
- 10X 200 (8) DOTTED
- 11X LETTERS AND ARROWS

RAISED REFLECTIVE PAVEMENT MARKERS

- 1 ONE-WAY CRYSTAL MARKER AT 24.38 m(80') CENTERS
- 2 ONE-WAY CRYSTAL MARKER AT 12.19 m(40') CENTERS
- 3 ONE-WAY CRYSTAL MARKER AT 6.10 m(20') CENTERS
- 4 ONE-WAY AMBER MARKER AT 12.19 m(40') CENTERS
- 5 TWO-WAY AMBER MARKER AT 12.19 m(40') CENTERS FOR SPEEDS LESS THAN 45 MPH
- 6 TWO-WAY AMBER MARKER AT 24.38 m(80') CENTERS FOR SPEEDS GREATER THAN 45 MPH

WHERE "X" DESIGNATES: — WHITE

E = EPOXY — YELLOW

P = PAINT

T = THERMOPLASTIC

TP= TEMPORARY PAVEMENT MARKING TAPE

T3= PAVEMENT MARKING TAPE, TYPE III

W3= WET TEMPORARY PAVEMENT MARKING TAPE, TYPE III

All dimensions are in millimeters (inches) unless otherwise shown.

(1T3) 100 mm SOLID, PAVEMENT MARKING TAPE, TYPE III (YELLOW)

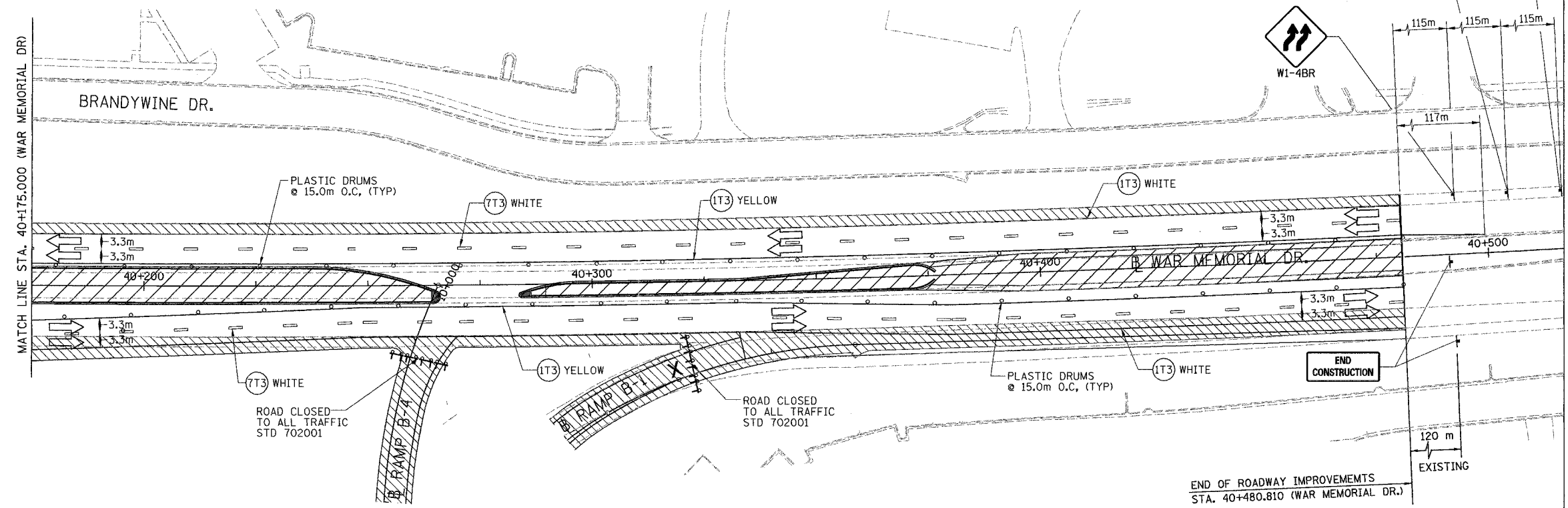
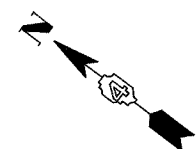
WAR MEMORIAL DR LT STA. 40+175 TO STA. 40+481
WAR MEMORIAL DR RT STA. 40+175 TO STA. 40+481

(1T3) 100 mm SOLID, PAVEMENT MARKING TAPE, TYPE III (WHITE)

WAR MEMORIAL DR LT STA. 40+175 TO STA. 40+481
WAR MEMORIAL DR RT STA. 40+175 TO STA. 40+481

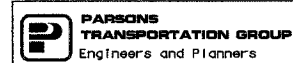
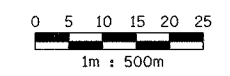
(7T3) 100 mm SKIP DASH, PAVEMENT MARKING TAPE, TYPE III (WHITE)

WAR MEMORIAL DR LT STA. 40+175 TO STA. 40+481
WAR MEMORIAL DR RT STA. 40+175 TO STA. 40+481



LEGEND

- CONSTRUCTED THIS STAGE
- CONSTRUCTED IN PRECEDING STAGES
- TEMPORARY PAVEMENT
- DIRECTION OF TRAFFIC
- PLASTIC DRUM
- TYPE III BARRICADE WITH FLASHING LIGHTS (ROAD CLOSED)
- SIGN
- LANE(S) CLOSED
- ARROW BOARD



REVISIONS	
NAME	DATE

ILLINOIS DEPARTMENT OF TRANSPORTATION
MAINTENANCE OF TRAFFIC
WAR MEMORIAL DRIVE
STAGE 3-3
STA. 40+175.000 - STA. 40+480.810
DATE 11/12/04
DRAWN BY CADD
CHECKED BY KJW