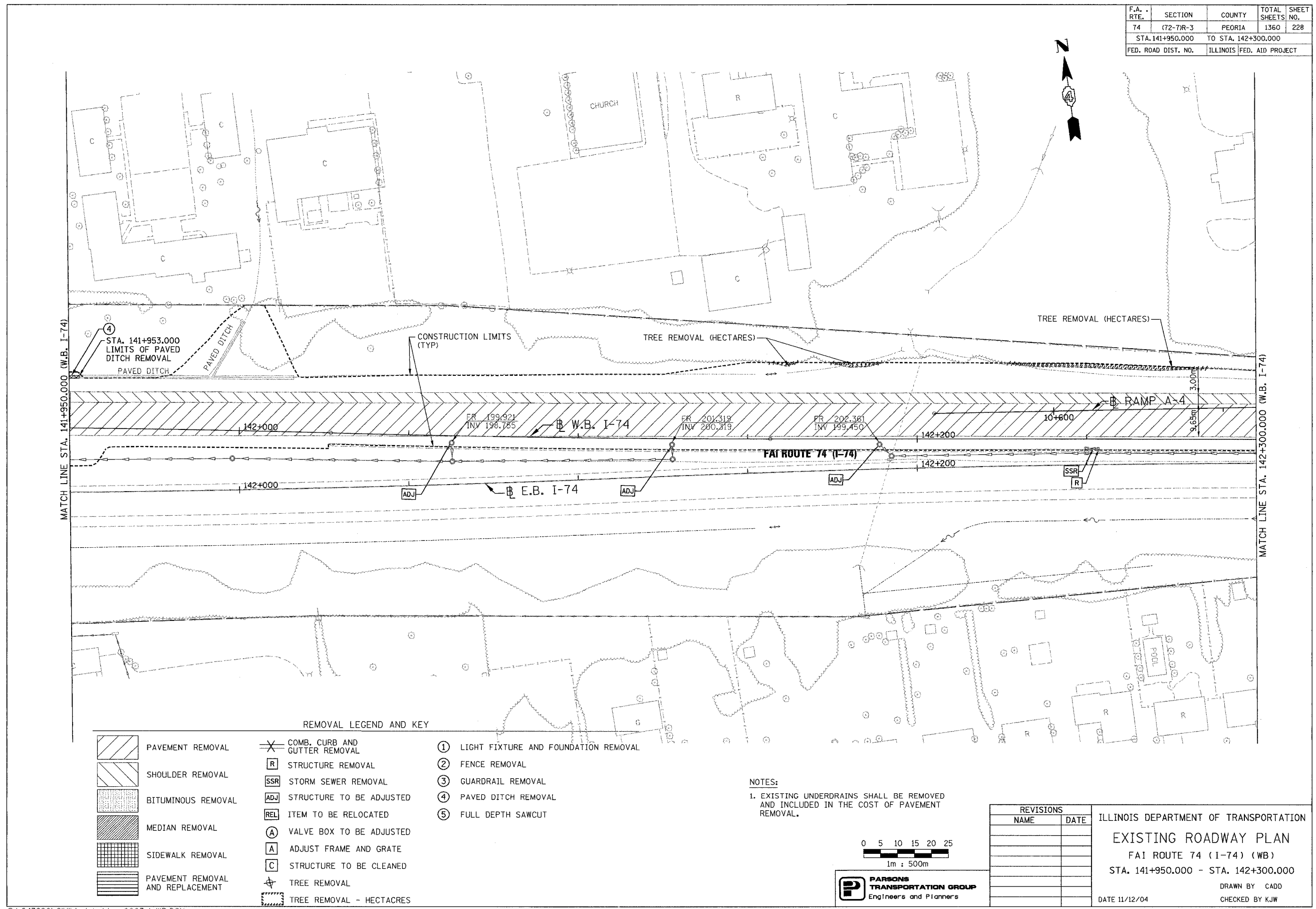


F.A. RTE.	SECTION	COUNTY	TOTAL SHEETS	SHEET NO.
74	(72-7)R-3	PEORIA	1360	228
STA. 141+950.000 TO STA. 142+300.000				
FED. ROAD DIST. NO.	ILLINOIS FED. AID PROJECT			



MATCH LINE STA. 141+950.000 (W.B. I-74)

MATCH LINE STA. 142+300.000 (W.B. I-74)

REMOVAL LEGEND AND KEY

	PAVEMENT REMOVAL		COMB. CURB AND GUTTER REMOVAL		LIGHT FIXTURE AND FOUNDATION REMOVAL
	SHOULDER REMOVAL		STRUCTURE REMOVAL		FENCE REMOVAL
	BITUMINOUS REMOVAL		STORM SEWER REMOVAL		GUARDRAIL REMOVAL
	MEDIAN REMOVAL		STRUCTURE TO BE ADJUSTED		PAVED DITCH REMOVAL
	SIDEWALK REMOVAL		ITEM TO BE RELOCATED		FULL DEPTH SAWCUT
	PAVEMENT REMOVAL AND REPLACEMENT		VALVE BOX TO BE ADJUSTED		
			ADJUST FRAME AND GRATE		
			STRUCTURE TO BE CLEANED		
			TREE REMOVAL		
			TREE REMOVAL - HECTARES		

NOTES:
 1. EXISTING UNDERDRAINS SHALL BE REMOVED AND INCLUDED IN THE COST OF PAVEMENT REMOVAL.

0 5 10 15 20 25
 1m : 500m

PARSONS TRANSPORTATION GROUP
 Engineers and Planners

REVISIONS		ILLINOIS DEPARTMENT OF TRANSPORTATION EXISTING ROADWAY PLAN FAI ROUTE 74 (I-74) (WB) STA. 141+950.000 - STA. 142+300.000 DATE 11/12/04
NAME	DATE	

DRAWN BY CADD
 CHECKED BY KJW