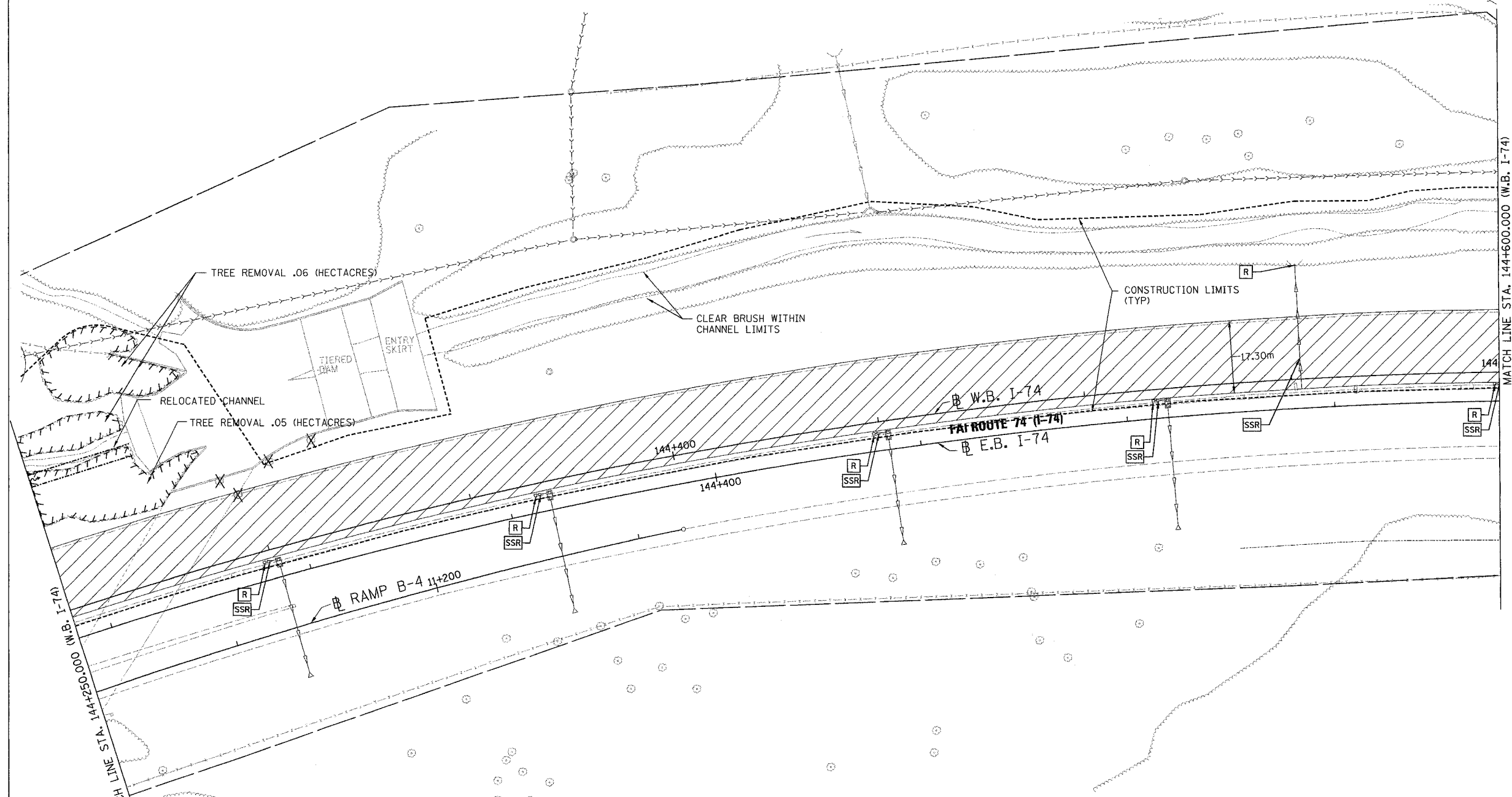
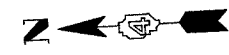


F.A. RTE.	SECTION	COUNTY	TOTAL SHEETS	SHEET NO.
74	(72-TIR-3)	PEORIA	1360	244
STA. 144+250.000 TO STA. 144+600.000				
FED. ROAD DIST. NO.		ILLINOIS	FED. AID PROJECT	



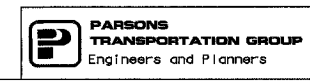
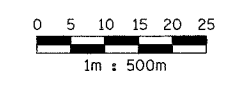
MATCH LINE STA. 144+250.000 (M.P. 1-74)

MATCH LINE STA. 144+600.000 (W.B. I-74)

REMOVAL LEGEND AND KEY

- | | | | | | |
|--|----------------------------------|--|-------------------------------|--|--------------------------------------|
| | PAVEMENT REMOVAL | | COMB. CURB AND GUTTER REMOVAL | | LIGHT FIXTURE AND FOUNDATION REMOVAL |
| | SHOULDER REMOVAL | | STRUCTURE REMOVAL | | FENCE REMOVAL |
| | BITUMINOUS REMOVAL | | STORM SEWER REMOVAL | | GUARDRAIL REMOVAL |
| | MEDIAN REMOVAL | | STRUCTURE TO BE ADJUSTED | | PAVED DITCH REMOVAL |
| | SIDEWALK REMOVAL | | ITEM TO BE RELOCATED | | FULL DEPTH SAWCUT |
| | PAVEMENT REMOVAL AND REPLACEMENT | | VALVE BOX TO BE ADJUSTED | | |
| | | | ADJUST FRAME AND GRATE | | |
| | | | STRUCTURE TO BE CLEANED | | |
| | | | TREE REMOVAL | | |
| | | | TREE REMOVAL - HECTACRES | | |

NOTES:
 1. EXISTING UNDERDRAINS SHALL BE REMOVED AND INCLUDED IN THE COST OF PAVEMENT REMOVAL.



REVISIONS	
NAME	DATE

ILLINOIS DEPARTMENT OF TRANSPORTATION
 EXISTING ROADWAY PLAN
 FAI ROUTE 74 (I-74) (WB)
 STA. 144+250.000 - STA. 144+600.000
 DATE 11/12/04
 DRAWN BY CADD
 CHECKED BY KJW