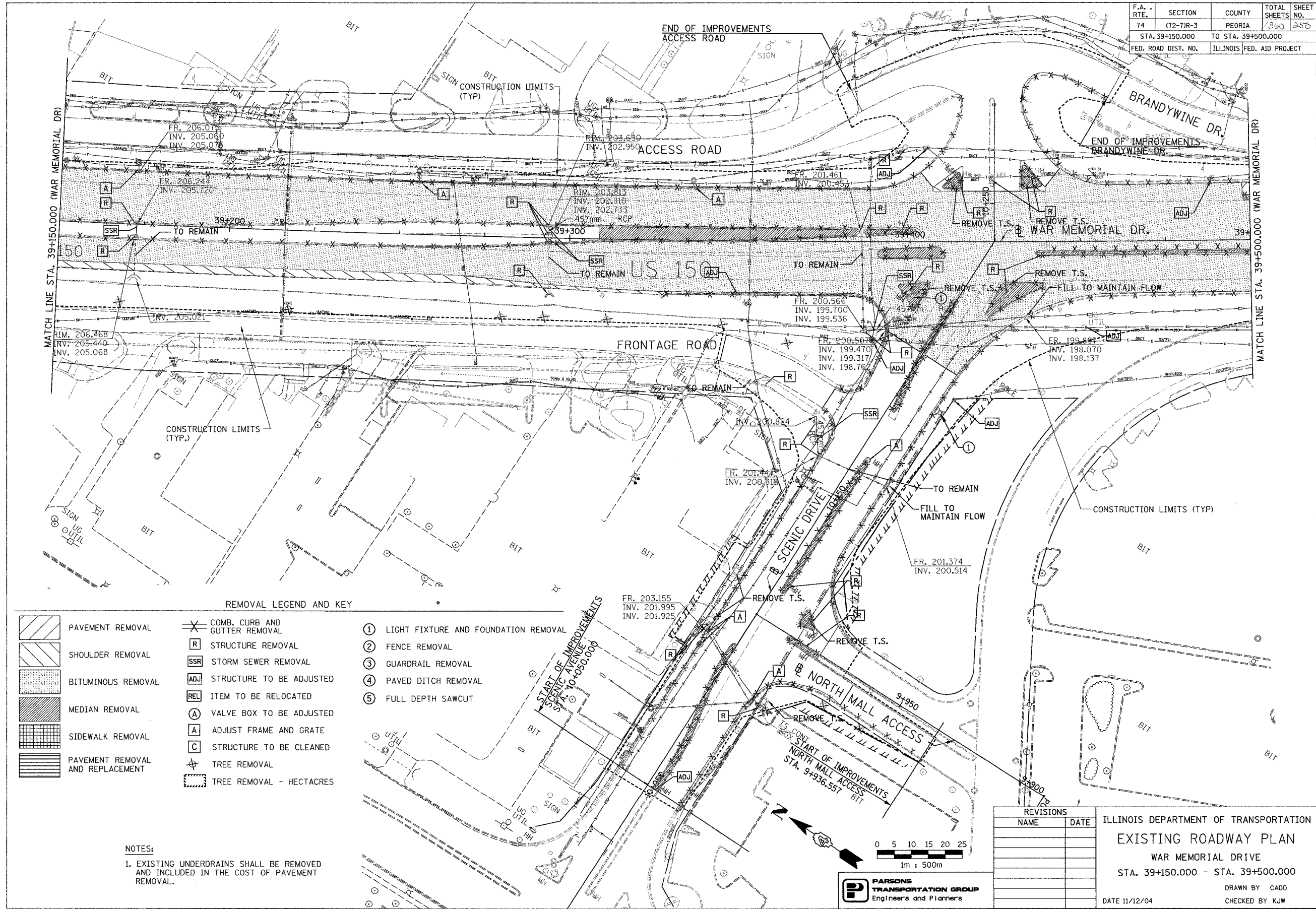


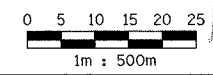
F.A. RTE.	SECTION	COUNTY	TOTAL SHEETS	SHEET NO.
74	(72-7)R-3	PEORIA	1360	256
STA. 39+150.000		TO STA. 39+500.000		
FED. ROAD DIST. NO.		ILLINOIS FED. AID PROJECT		



**REMOVAL LEGEND AND KEY**

	PAVEMENT REMOVAL		COMB. CURB AND GUTTER REMOVAL		LIGHT FIXTURE AND FOUNDATION REMOVAL
	SHOULDER REMOVAL		STRUCTURE REMOVAL		FENCE REMOVAL
	BITUMINOUS REMOVAL		STORM SEWER REMOVAL		GUARDRAIL REMOVAL
	MEDIAN REMOVAL		STRUCTURE TO BE ADJUSTED		PAVED DITCH REMOVAL
	SIDEWALK REMOVAL		ITEM TO BE RELOCATED		FULL DEPTH SAWCUT
	PAVEMENT REMOVAL AND REPLACEMENT		VALVE BOX TO BE ADJUSTED		
			ADJUST FRAME AND GRATE		
			STRUCTURE TO BE CLEANED		
			TREE REMOVAL		
			TREE REMOVAL - HECTARES		

**NOTES:**  
 1. EXISTING UNDERDRAINS SHALL BE REMOVED AND INCLUDED IN THE COST OF PAVEMENT REMOVAL.



**PARSONS TRANSPORTATION GROUP**  
 Engineers and Planners

REVISIONS	
NAME	DATE

ILLINOIS DEPARTMENT OF TRANSPORTATION  
**EXISTING ROADWAY PLAN**  
 WAR MEMORIAL DRIVE  
 STA. 39+150.000 - STA. 39+500.000  
 DRAWN BY CADD  
 CHECKED BY KJW  
 DATE 11/12/04