

DRAINAGE STRUCTURE TABLE

#	TYPE	DIAMETER	PROFILE	FRAME/GRATE	STATION, OFFSET	FRAME ELEV.	INV. EL.	COMMENTS
1	END SECTION	900mm	ON GRADE	-	141+948.170(WB), 15.013m LT.	-	196.000	WITH GRATING
2	MH, TY A	1.8m	ON GRADE	TY 1, OPEN	141+937.735(WB), 14.681m LT.	196.000	194.250 (E) 194.000 (S)	
2A	MH, TY A	1.5m	ON GRADE	TY 1, OPEN	141+938.430(WB), 9.629m RT.	195.500	193.346 (EX. S.) 193.346 (PR.) 193.796 (EX. E.)	CONSTRUCT OVER EX. SEWERS
2B	END SECTION	600mm	ON GRADE	-	141+626.096(WB), 9.903m RT.	-	186.022	WITH GRATING

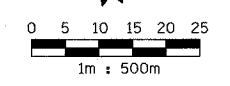
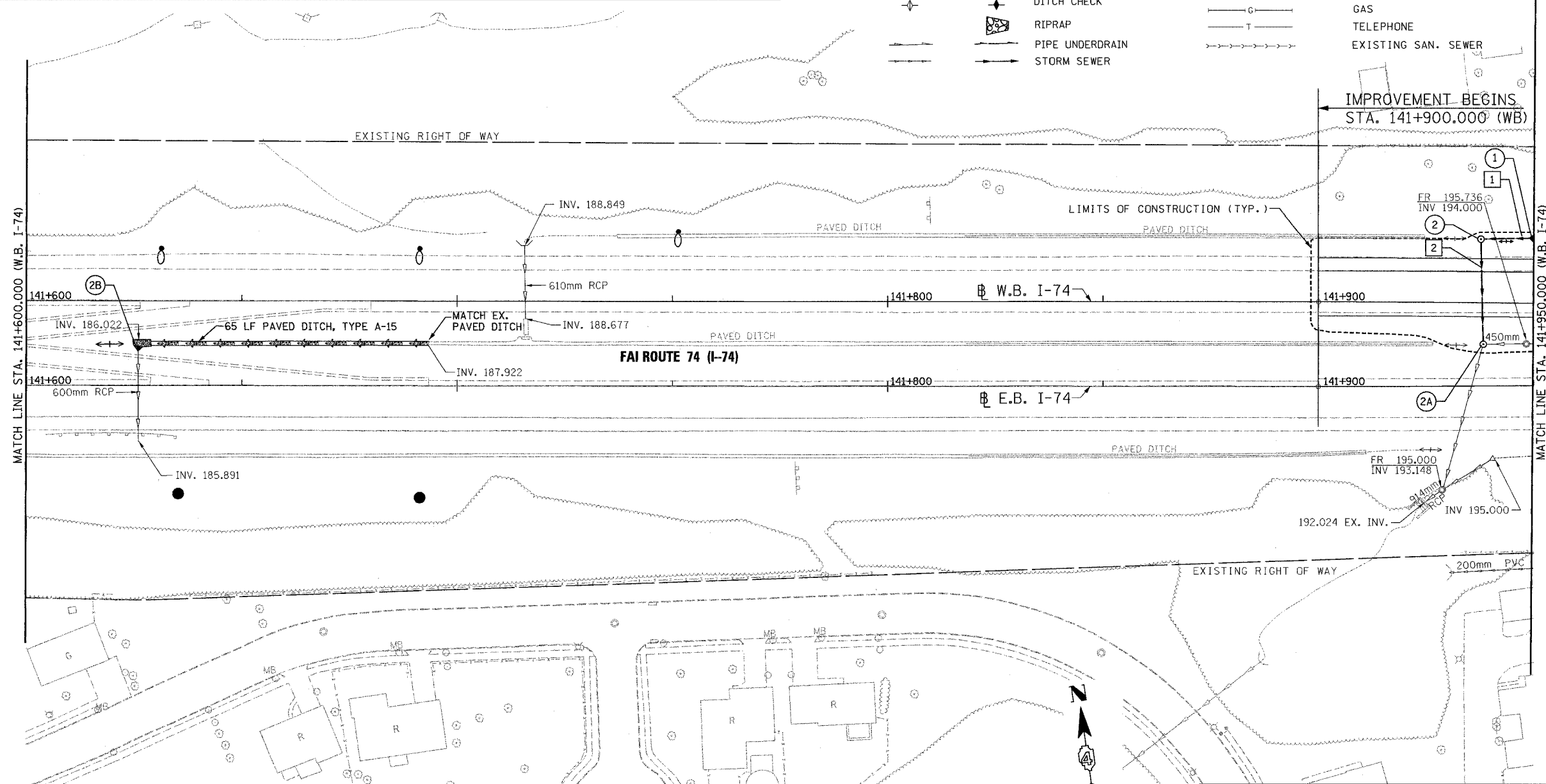
DRAINAGE PIPE TABLE

#	CLASS	TYPE	DIAMETER	LENGTH	INV. EL. UPSTREAM	INV. EL. DOWNSTREAM	SLOPE	TRENCH BACKFILL	REMARKS
1	A	2	900mm	11.0m	196.000	194.250	15.909%	0.0	
2	A	2	900mm	24.0m	194.000	193.346	2.725%	38.42	

LEGEND

EXISTING	PROPOSED	EXISTING	PROPOSED

F.A. RTE.	SECTION	COUNTY	TOTAL SHEETS	SHEET NO.
74	(72-7)R-3	PEORIA	1360	287
STA. 141+600.000		TO STA. 141+950.000		
FED. ROAD DIST. NO.	ILLINOIS	FED. AID PROJECT		



REVISIONS	
NAME	DATE

ILLINOIS DEPARTMENT OF TRANSPORTATION
DRAINAGE AND UTILITY PLAN
 FAI ROUTE 74 (I-74) (WB)
 STA. 141+600.000 - STA. 141+950.000

DRAWN BY CADD
 CHECKED BY KJW
 DATE 11/12/04