

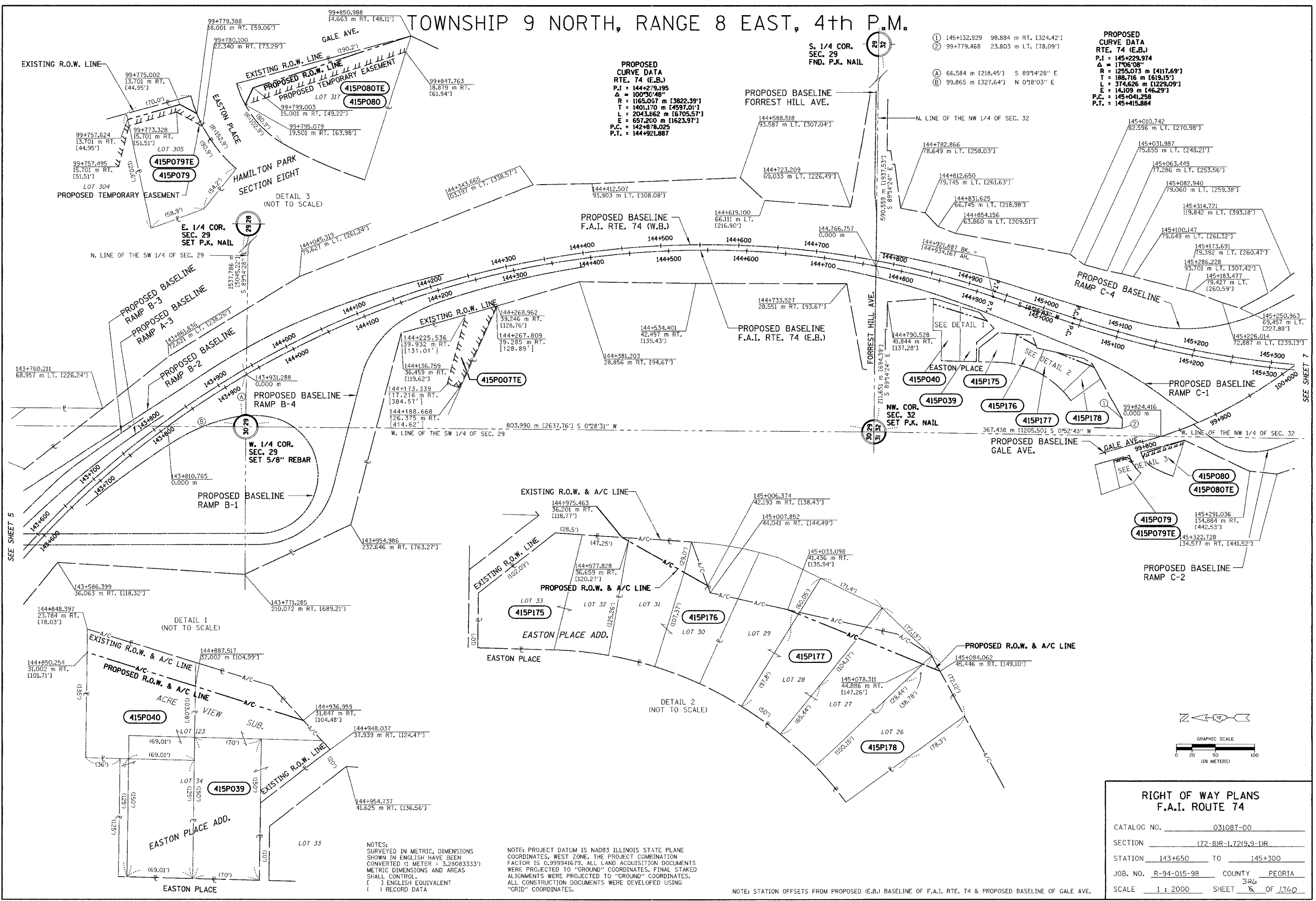
# TOWNSHIP 9 NORTH, RANGE 8 EAST, 4th P.M.

**PROPOSED CURVE DATA  
RTE. 74 (E.B.)**  
 P.I. = 145+23.974  
 Δ = 17°06'08"  
 R = 1255.073 m [4117.69']  
 T = 188.716 m [619.15']  
 L = 374.626 m [1229.09']  
 E = 141.09 m [462.9']  
 P.C. = 145+041.258  
 P.T. = 145+415.884

**PROPOSED CURVE DATA  
RTE. 74 (E.B.)**  
 P.I. = 144+279.195  
 Δ = 100°30'48"  
 R = 1165.057 m [3822.39']  
 T = 1401.170 m [4597.01']  
 L = 2043.862 m [6705.51']  
 E = 657.200 m [2153.97']  
 P.C. = 142+487.025  
 P.T. = 144+921.887

① 145+132.929 98.884 m RT. [324.42']  
 ② 99+779.468 23.803 m LT. [78.09']  
 (A) 66.584 m [218.45'] S 89°14'28" E  
 (B) 99.865 m [327.64'] N 0°18'03" E

APPROVED BY \_\_\_\_\_ DISTRICT ENGINEER  
 DATE \_\_\_\_\_

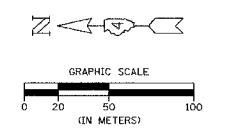


DRAWN BY \_\_\_\_\_  
 WRITTEN BY \_\_\_\_\_  
 CHECKED BY \_\_\_\_\_  
 INSPECTED BY \_\_\_\_\_

NOTES:  
 SURVEYED IN METRIC, DIMENSIONS SHOWN IN ENGLISH HAVE BEEN CONVERTED 1: METER = 3.28083333'. METRIC DIMENSIONS AND AREAS SHALL CONTROL.  
 ( ) ENGLISH EQUIVALENT  
 ( ) RECORD DATA

NOTE: PROJECT DATUM IS NAD83 ILLINOIS STATE PLANE COORDINATES, WEST ZONE, THE PROJECT COMBINATION FACTOR IS 0.999941679. ALL LAND ACQUISITION DOCUMENTS WERE PROJECTED TO "GROUND" COORDINATES. FINAL STAKED ALIGNMENTS WERE PROJECTED TO "GROUND" COORDINATES. ALL CONSTRUCTION DOCUMENTS WERE DEVELOPED USING "GRID" COORDINATES.

NOTE: STATION OFFSETS FROM PROPOSED (E.B.) BASELINE OF F.A.I. RTE. 74 & PROPOSED BASELINE OF GALE AVE.



RIGHT OF WAY PLANS F.A.I. ROUTE 74	
CATALOG NO.	031087-00
SECTION	(72-8)R-1,72(9,9-1)R
STATION	143+650 TO 145+300
JOB. NO.	R-94-015-98 COUNTY PEORIA
SCALE	1 : 2000 SHEET 326 OF 1360