

TRAFFIC SIGNAL LEGEND

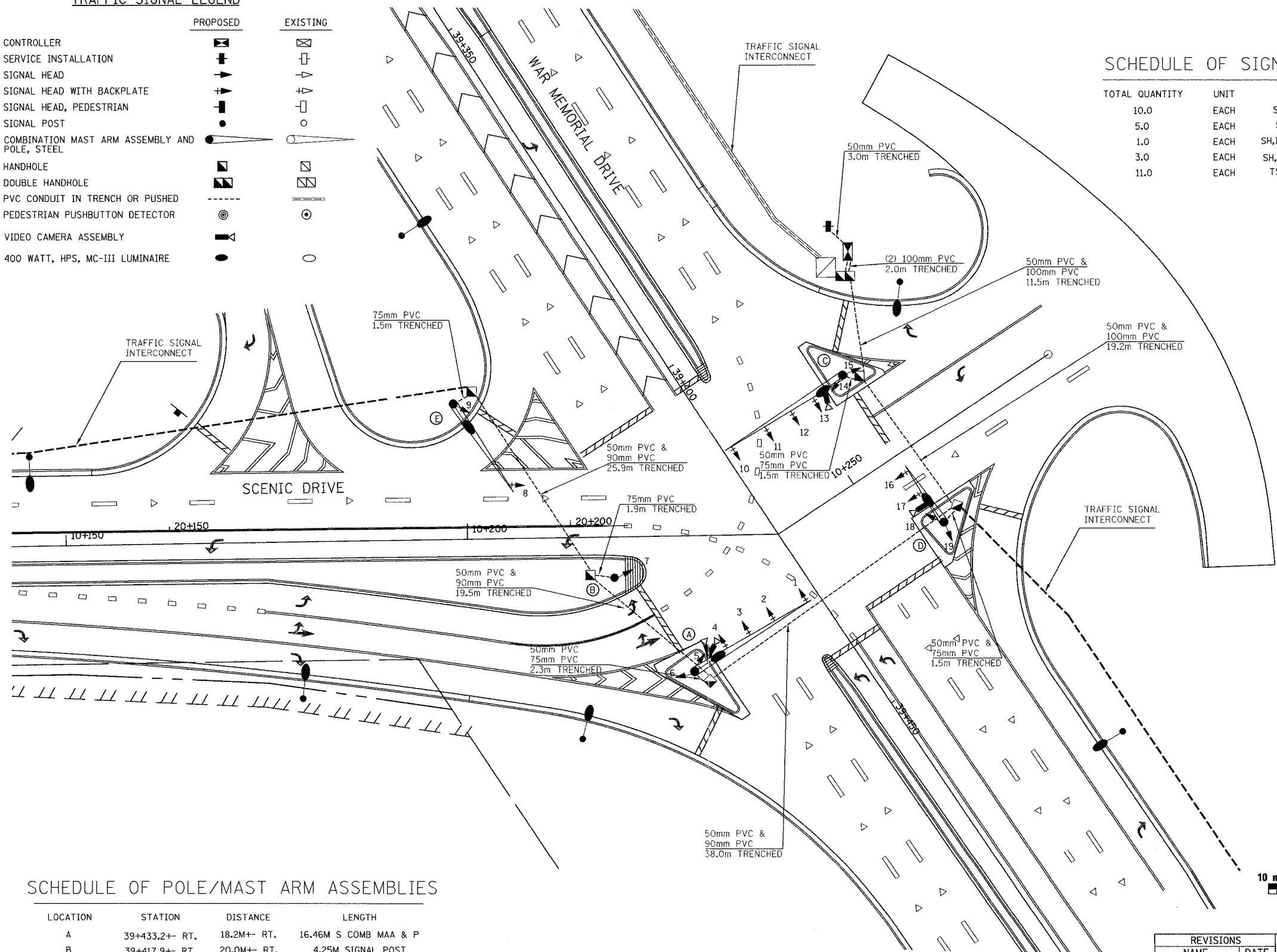
	PROPOSED	EXISTING
CONTROLLER		
SERVICE INSTALLATION		
SIGNAL HEAD		
SIGNAL HEAD WITH BACKPLATE		
SIGNAL HEAD, PEDESTRIAN		
SIGNAL POST		
COMBINATION MAST ARM ASSEMBLY AND POLE, STEEL		
HANDHOLE		
DOUBLE HANDHOLE		
PVC CONDUIT IN TRENCH OR PUSHED		
PEDESTRIAN PUSHBUTTON DETECTOR		
VIDEO CAMERA ASSEMBLY		
400 WATT, HPS, MC-III LUMINAIRE		

F.A. RTE.	SECTION	COUNTY	TOTAL SHEETS	SHEET NO.
74	(72-TIR-3)	PEORIA	136	34
STA.		TO STA.		
FED. ROAD DIST. NO.		ILLINOIS FED. AID PROJECT		

SCHEDULE OF SIGNAL HEAD QUANTITIES

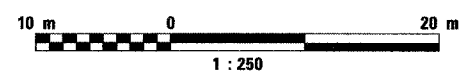
TOTAL QUANTITY	UNIT	ITEM	LOCATION
10.0	EACH	SH,IF,3S,MAM	1,2,3,4,8,10,11,12,13,16
5.0	EACH	SH,IF,3S,BM	5,7,9,14,18
1.0	EACH	SH,IF,4S(LEFT),MAM	17
3.0	EACH	SH,IF,5S(RIGHT),BM	6,15,19
11.0	EACH	TS BACKPLATE	1,2,3,4,8,10,11,12,13,16,17

NOTE: ALL LUMINAIRES AT THIS INTERSECTION SHALL BE SEMI-CUTOFF LUMINAIRES.



SCHEDULE OF POLE/MAST ARM ASSEMBLIES

LOCATION	STATION	DISTANCE	LENGTH
A	39+433.2+ RT.	18.2M+ RT.	16.46M S COMB MAA & P
B	39+417.9+ RT.	20.0M+ RT.	4.25M SIGNAL POST
C	39+412.7+ LT.	17.6M+ LT.	16.76M S COMB MAA & P
D	39+434.9+ LT.	17.9M+ LT.	7.92M S COMB MAA & P
E	39+389.0+ RT.	24.8M+ RT.	14.02M S COMB MAA & P



REVISIONS	
NAME	DATE

ILLINOIS DEPARTMENT OF TRANSPORTATION
PROPOSED TRAFFIC SIGNAL INSTALLATION
 SCENIC DRIVE AND WAR MEMORIAL DRIVE
 DRAWN BY JJS
 CHECKED BY GCV
 DATE 11/12/04

