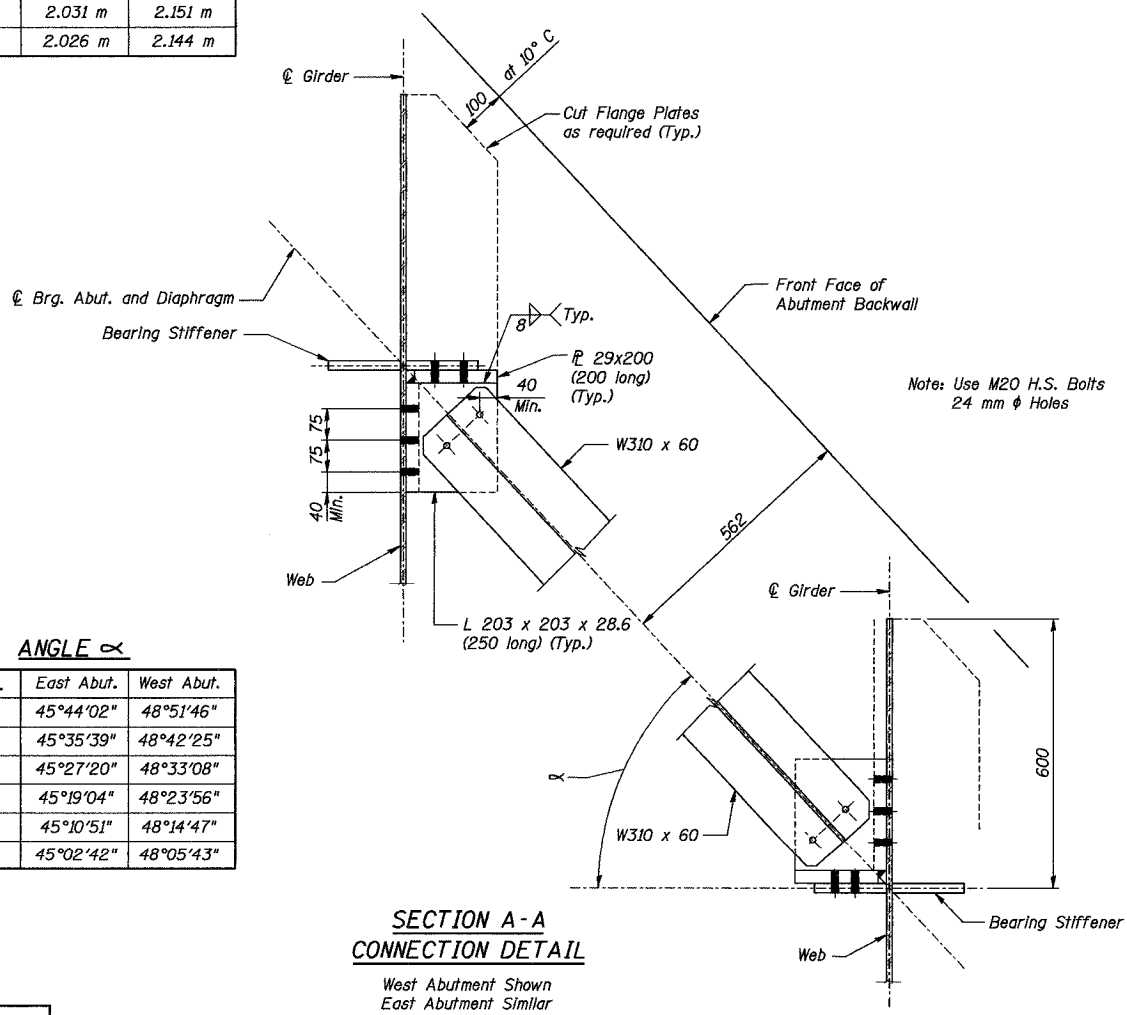


LENGTH 'L'

Girder No.	East Abut.	West Abut.
1 - 2	2.046 m	2.171 m
2 - 3	2.041 m	2.164 m
3 - 4	2.036 m	2.157 m
4 - 5	2.031 m	2.151 m
5 - 6	2.026 m	2.144 m

END DIAPHRAGM D
(10 Required)



ANGLE α

Girder No.	East Abut.	West Abut.
1	45°44'02"	48°51'46"
2	45°35'39"	48°42'25"
3	45°27'20"	48°33'08"
4	45°19'04"	48°23'56"
5	45°10'51"	48°14'47"
6	45°02'42"	48°05'43"

SECTION A-A CONNECTION DETAIL
West Abutment Shown
East Abutment Similar

Notes:

All diaphragms, plates and angles shall be AASHTO M270M Grade 345.

"NTR" denotes plates to which notch toughness requirements are applicable.

Two hardened washers shall be required over all oversized holes.

All dimensions are in millimeters (mm) except as noted.

REVISION	DATE	DESCRIPTION
STATE OF ILLINOIS DEPARTMENT OF TRANSPORTATION		
STEEL DETAILS		
RAMP A-3 OVER RAMP B-5 F.A.I. ROUTE 74 (SECTION 72-7)R-3 PEORIA COUNTY STA. 10+418.515 (RAMP A-3) STRUCTURE NUMBER 072-0172		
PARSONS TRANSPORTATION GROUP CHICAGO, ILLINOIS		
DRAWING NO. S-3	SCALE N.T.S.	DATE 11/16/04
		SHEET NO. 10

Date: 11/19/2004 Time: 09:11:44 AM
Filename: P:\6439956\structural\A3\072-0172\Sheet\Tracings\SD00004-1A0720172.dgn

Designed by: AK
Checked by: WEE
Drafted by: JMG
Checked by: AK