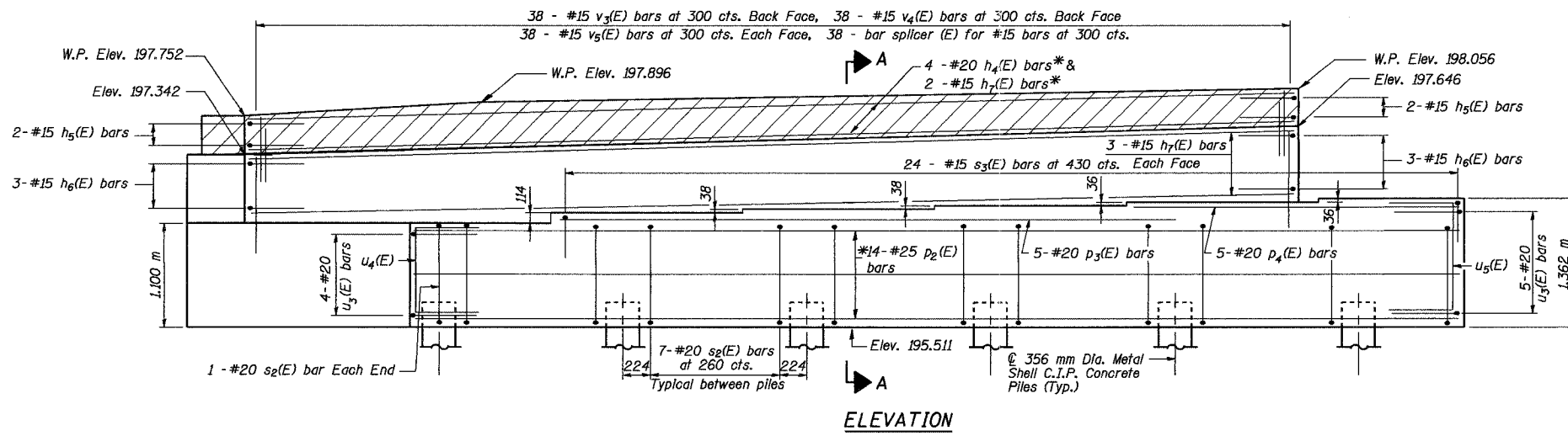


ROUTE NO.	SECT.	COUNTY	SHEET NO.	TOTAL SHEETS
F.A.I. 74	(72-7) R-3	PEORIA	433	1360
FED. ROAD DIST. NO. 7	ILLINOIS		FED. AID PROJECT	

CONTRACT NO. 68200



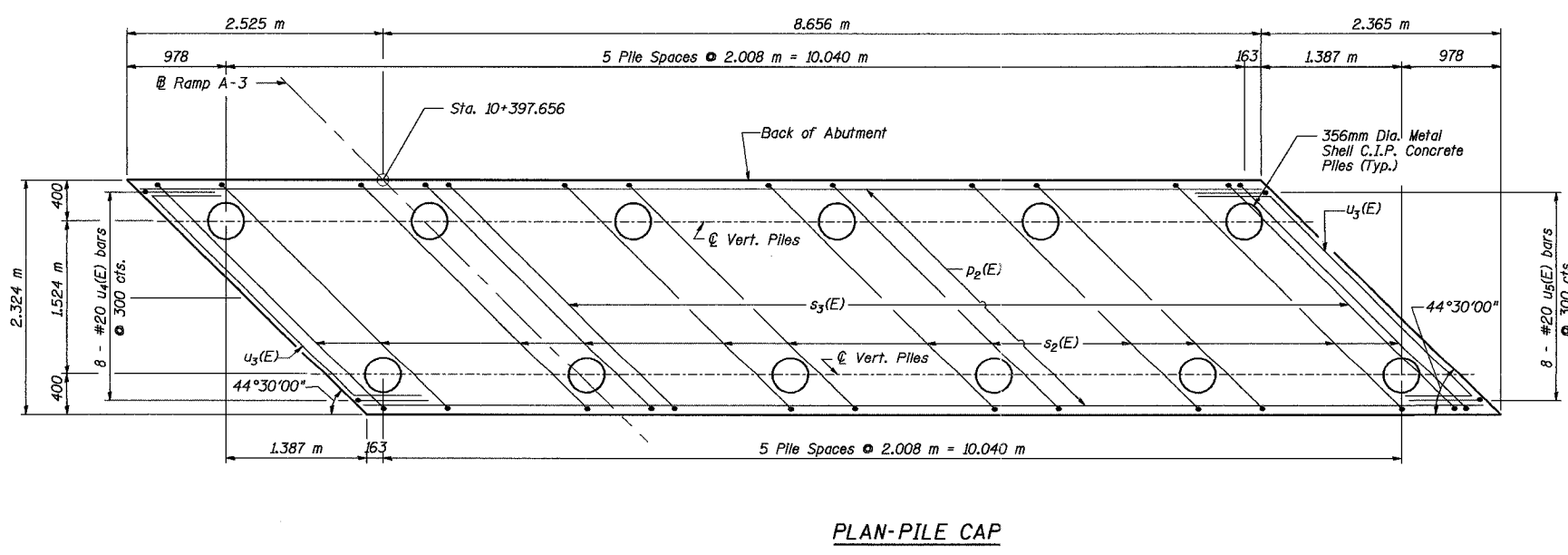
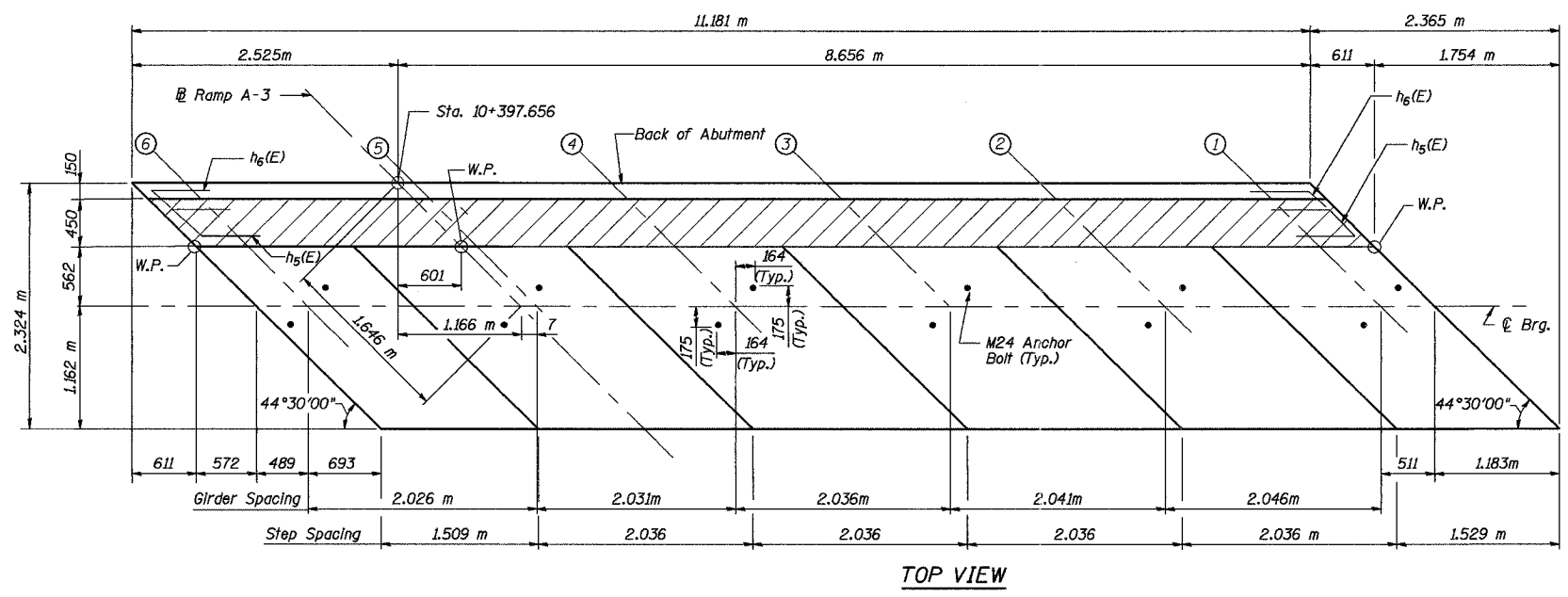
**SEAT ELEVATIONS**

Girder No.	Seat Elevation
1	196.873
2	196.837
3	196.801
4	196.763
5	196.725
6	196.611

**PILE DATA**

Type: 356 mm Dia. Metal Shell C.I.P. Concrete Piles  
 Capacity: 500 kN  
 Est. Length: 19.0 m  
 No. Required: 12

- Notes:
- Work this drawing with Dwg. No. AB-4.
  - Top of backwall shall conform to grade and cross slope of roadway.
  - All dimensions are in millimeters (mm) except as noted.
  - Space reinforcement in cap to miss anchor bolts.
  - Pour steps monolithically with cap.
  - Reinforcement bars designated (E) shall be epoxy coated.
  - Hatched area to be poured after superstructure forms have been removed. Quantity of concrete included with Concrete Superstructure on Dwg. No. DK-2.
  - For Bar Schedule and Bill of Material, See Dwg. No. AB-4.
  - For Metal Shell Pile Details, see Dwg. No. PL-1.
  - For Anchor Bolt Details, See Dwg. No. A-1.
  - Bridge Seat Sealer shall be applied to abutment bridge seat.
  - All concrete edges shall have 20 mm chamfer unless noted otherwise.
  - \* See Section A-A, Dwg. No. AB-4 for bar placement.



REVISION	DATE	DESCRIPTION
STATE OF ILLINOIS DEPARTMENT OF TRANSPORTATION		
EAST ABUTMENT		
RAMP A-3 OVER RAMP B-5 F.A.I. ROUTE 74 (SECTION 72-7)R-3 PEORIA COUNTY STA. 10+418.515 (RAMP A-3) STRUCTURE NUMBER 072-0172		
PARSONS TRANSPORTATION GROUP CHICAGO, ILLINOIS		
DRAWING NO. AB-3	SCALE N.T.S.	DATE 11/16/04
		SHEET NO. 14

Date: 11/19/2004 Time: 09:31:17 AM

Filename: P:\649996\struc\ur\al\3\072-0172\Sheet\Tracings\AB0003-1A0720172.dgn

Designed by: WEE  
 Checked by: RW  
 Drafted by: RKS  
 Checked by: WEE