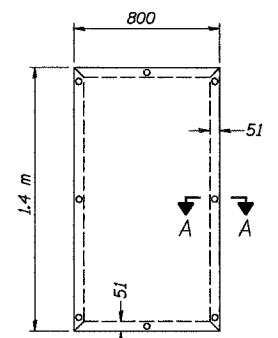
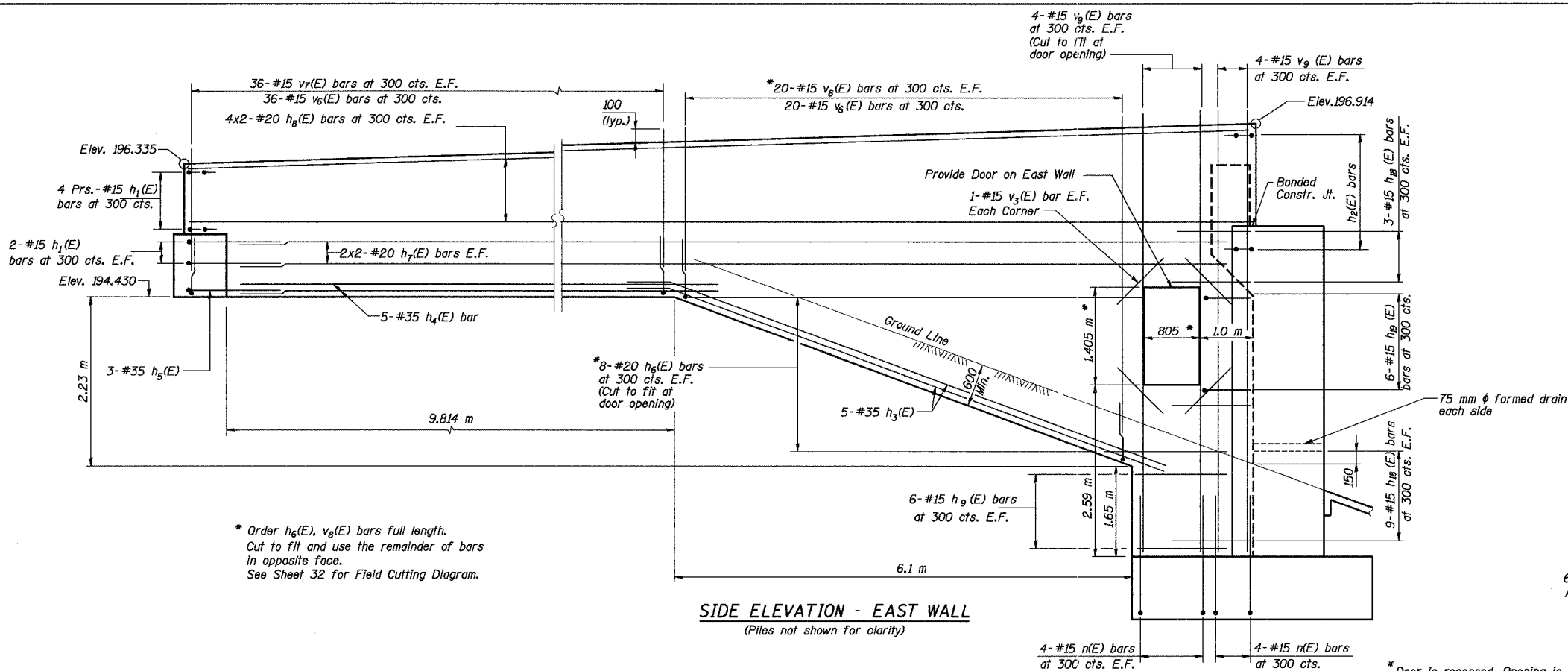


ROUTE NO.	SECT.	COUNTY	SHEET NO.	TOTAL SHEETS
F.A.I. 74	(72-7) R-3	PEORIA	474	1360
FED. ROAD DIST. NO.	ILLINOIS	FED. AID PROJECT	CONTRACT NO. 68200	
NO. 7				

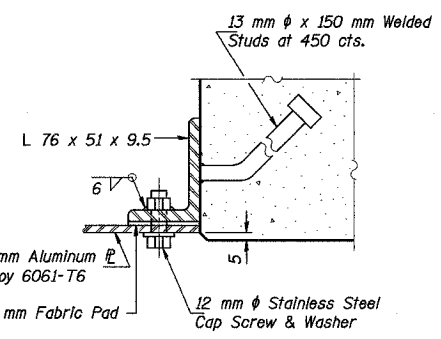
Time: 10/06/16 AM

Date: 11/19/2004

File name: P:\413996\struc\struc\1072-0183\Sheet\Tracings\180002-10720183.dgn

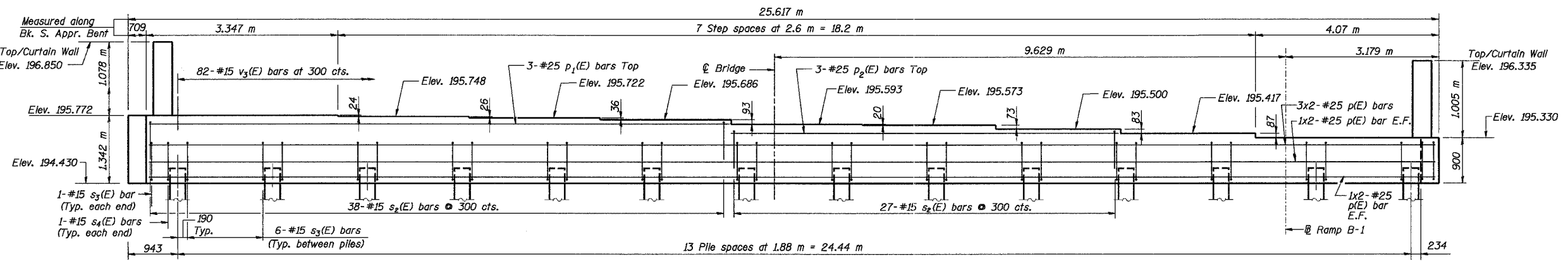


DOOR ELEVATION
Cost of door and frame are included with "Concrete Structures".



SECTION A-A

SIDE ELEVATION - EAST WALL
(Piles not shown for clarity)



ELEVATION - SOUTH APPROACH BENT
(Looking North)
(Wall reinforcement not shown)

MIN. BAR LAP

#15 bar	= 640
#20 bar	= 790
#25 bar	= 1.85 m
#35 bar	= 2.64 m

Notes:
Reinforcement bars designated (E) shall be epoxy coated.
Work this sheet with sheet 29.
Pour steps monolithically with cap.
All dimensions are in millimeters (mm) except as noted.
E.F. denotes each face.
B.F. denotes back face.
Bars indicated thus 20 x 3-#15 etc. indicates 20 lines of bars with 3 lengths per line.
For Bill of Material and Reinforcement details, see sheet 32.

Designed by: DL
Checked by: MBQ
Drafted by: FTE
Checked by: AK

REVISION	DATE	DESCRIPTION
STATE OF ILLINOIS DEPARTMENT OF TRANSPORTATION		
SOUTH ABUTMENT DETAILS I		
RAMPS B-1 AND B-4 OVER F.A.I. ROUTE 74 (I-74) RAMPS A-3 AND B-3		
F.A.I. ROUTE 74 SECTION (72-7) R-3 PEORIA COUNTY STATION 10+779.03 STRUCTURE NUMBER 072-0183		
PARSONS TRANSPORTATION GROUP CHICAGO, ILLINOIS		
DRAWING NO. 31	SCALE N.T.S.	DATE 2-18-03
		SHEET NO. 31