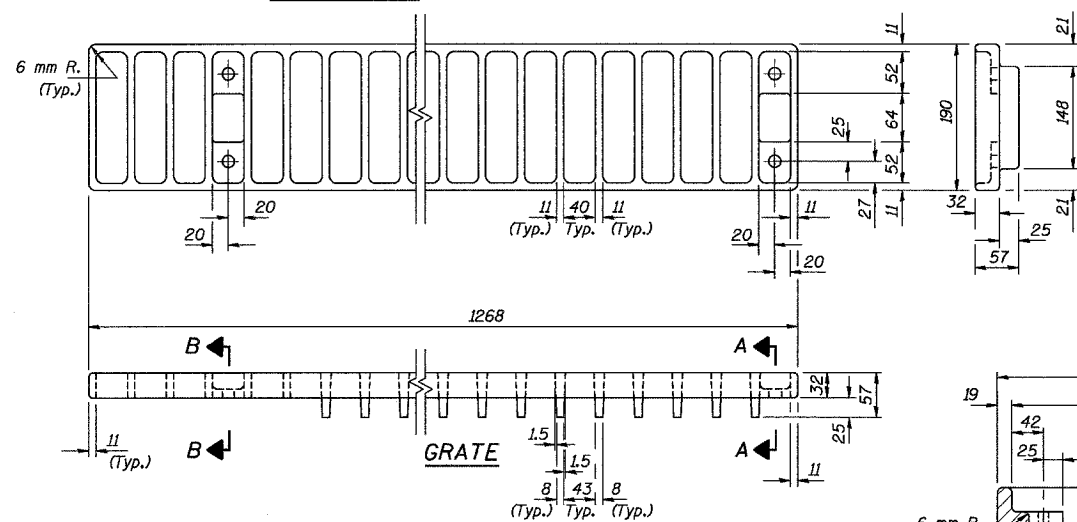
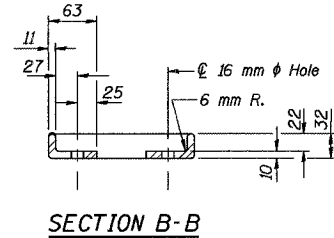
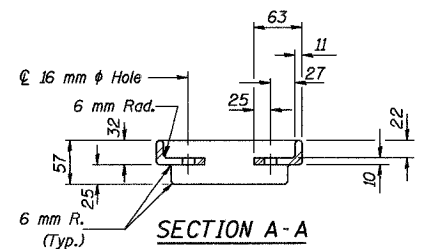


ROUTE NO.	SECT.	COUNTY	SHEET NO.	TOTAL SHEETS
F.A.I. 74	(72-7) R-3	PEORIA	487	1360
FED. ROAD DIST. NO. 7		ILLINOIS	FED. AID PROJECT	

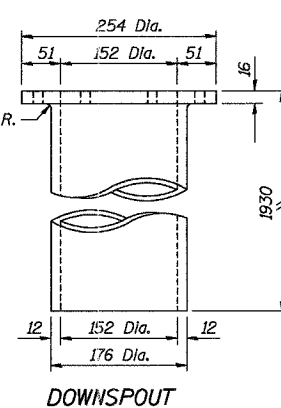
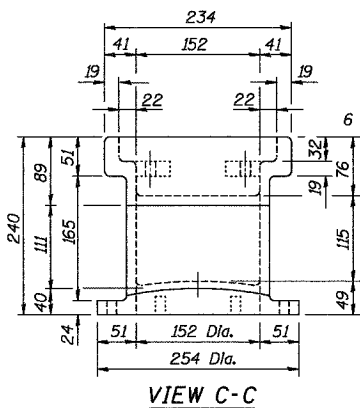
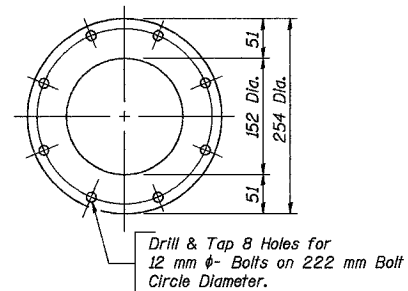
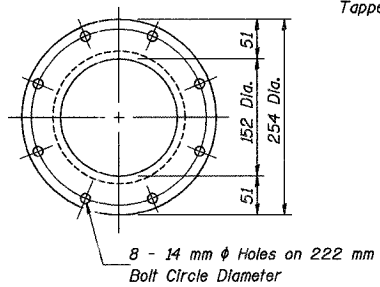
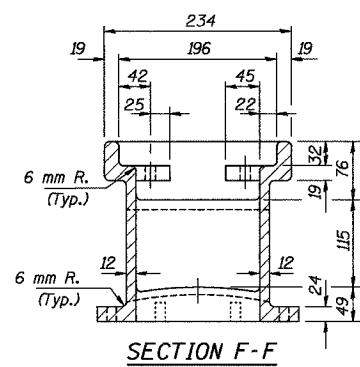
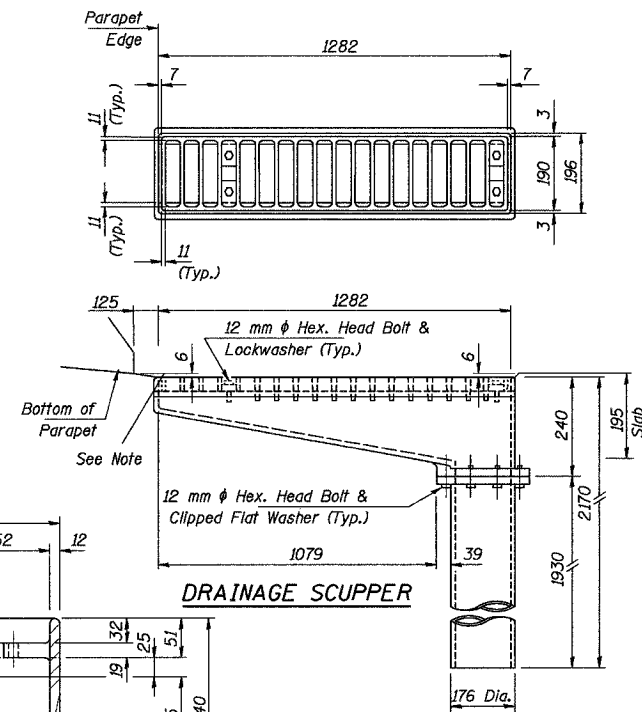
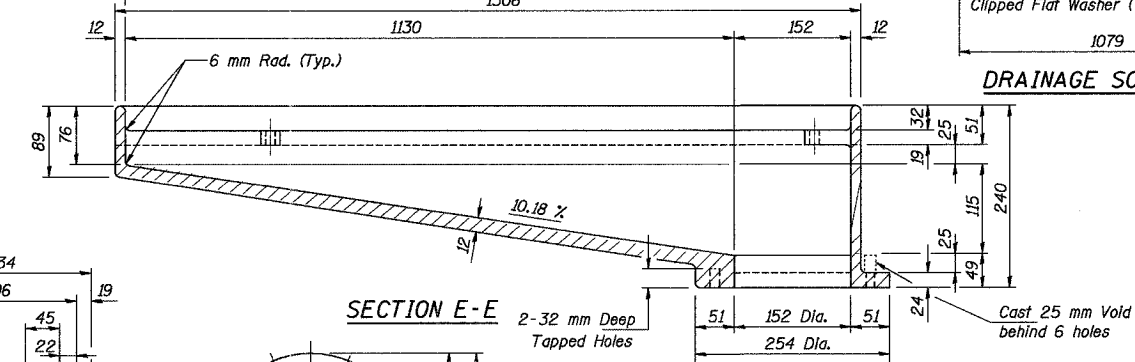
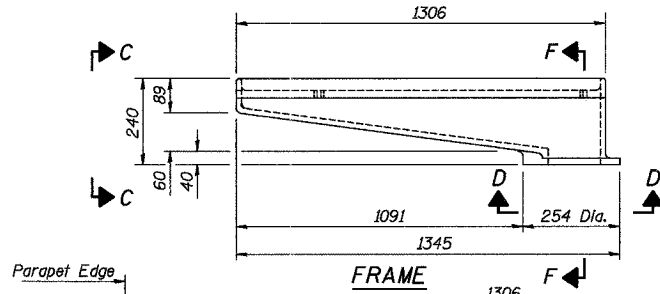
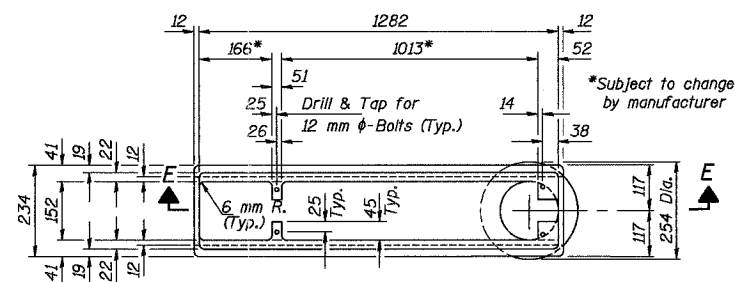
CONTRACT NO. 68200

Time: 1/19/2004 AM

File: dms1\F\643996\structure\072-0183\Sheet\Tracings\050002.L0720183.dgn



Notes: All cast iron parts shall be gray iron conforming to the requirements of AASHTO M 105, Class 30.
Bolts and washers shall conform to the requirements of ASTM A 307.
All bolts and washers shall be galvanized according to AASHTO M 232.
As an alternate bolts and washers may be stainless steel.
Cost of the Grate, Frame, Downspout, bolts and washers including complete installation of Scupper will be paid for at the unit bid price each for "DRAINAGE SCUPPERS, TYPE 2."
The Contractor may use at his option steel drainage scuppers or cast iron drainage scuppers.
All dimensions are in millimeters (mm) except as noted.
Edge of scupper to be placed at edge of parapet except when prohibited by wide top flange of beam.



BILL OF MATERIAL

ITEM	UNIT	QUANTITY
Drainage Scuppers Type II	Each	8

REVISION	DATE	DESCRIPTION
STATE OF ILLINOIS DEPARTMENT OF TRANSPORTATION		
DRAINAGE SCUPPER, TYPE II		
RAMPS B-1 AND B-4 OVER F.A.I. ROUTE 74 (I-74) RAMPS A-3 AND B-3 F.A.I. ROUTE 74 SECTION (72-7) R-3 PEORIA COUNTY STATION 10+779.03 STRUCTURE NUMBER 072-0183		
PARSONS TRANSPORTATION GROUP CHICAGO, ILLINOIS		
DRAWING NO. 44	SCALE N.T.S.	DATE 2-18-03
		SHEET NO. 44