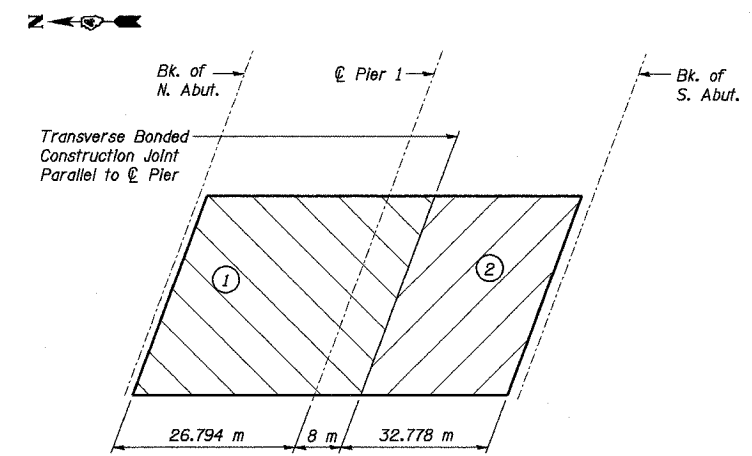
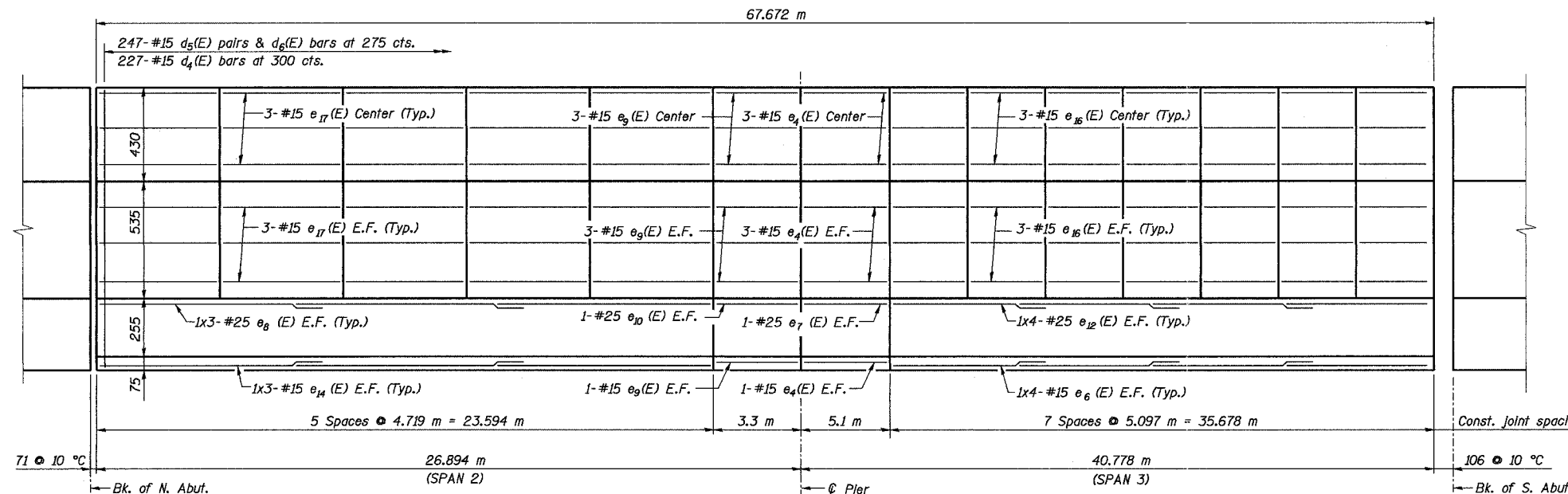


ROUTE NO.	SECT.	COUNTY	SHEET NO.	TOTAL SHEETS
F.A.I. 74	(72-7) R-3	PEORIA	511	1360
FED. ROAD DIST. NO. 7		ILLINOIS	FED. AID PROJECT	

CONTRACT NO. 68200

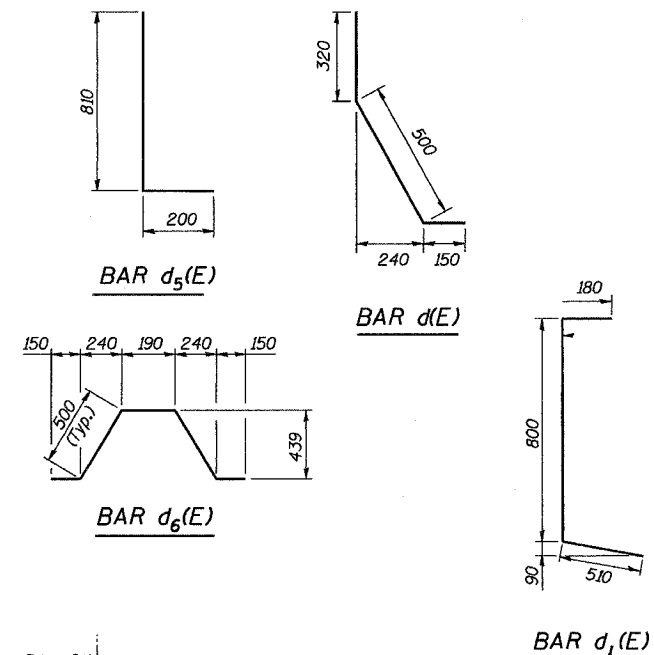
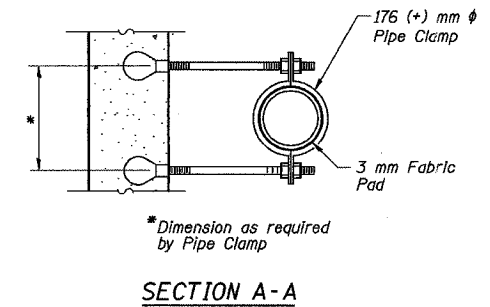
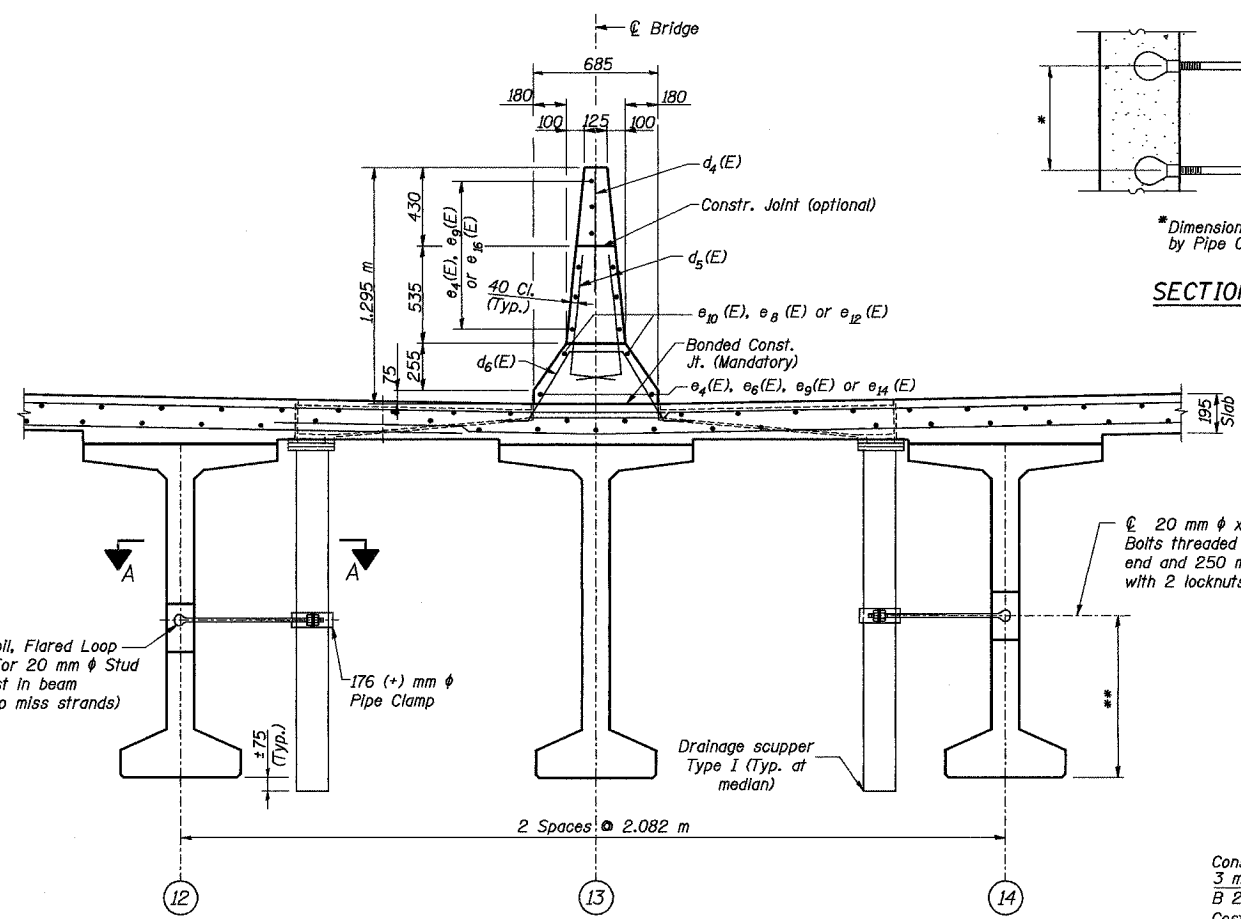


MEDIAN BARRIER ELEVATION
(Spans 2 and 3)

DECK POURING SEQUENCE PLAN

Notes: (DECK POURING)
When the deck pour is stopped for the day at one or more of the transverse Bonded Construction Joints in the deck Pouring Sequence as shown, the next pour shall not be made until both of the following requirements are met:

1. At least 72 hours shall have elapsed from the end of the previous pour.
2. The concrete strength shall have attained a minimum modulus of rupture of 4.5 MPa or a minimum compressive strength of 24 MPa.

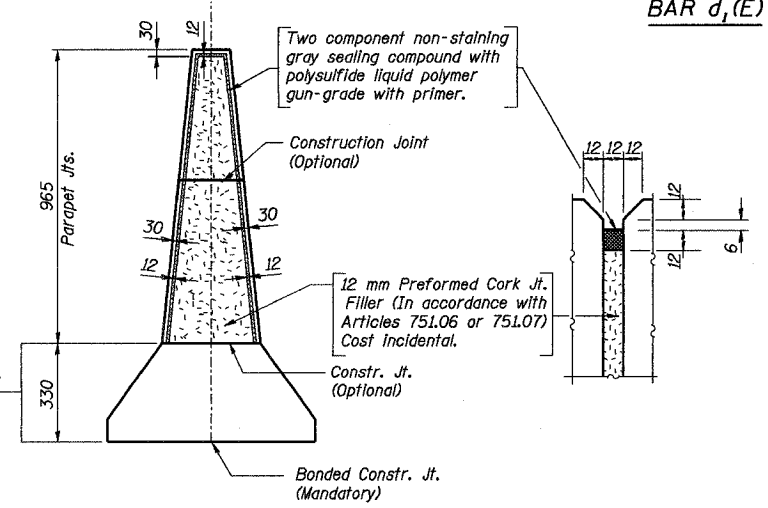


Notes:
For Bill of Material, see Sheet 13.
For location of scuppers, see General Plan.
Reinforcement bars designated (E) shall be epoxy coated.
Bars indicated thus 20 x 3-#15 etc. indicates 20 lines of bars with 3 lengths per line.
The clamping device and inserts shall be galvanized in accordance with AASHTO M 232.
All dimensions are in millimeters (mm) except as noted.

20 mm φ x 820 mm Steel Stud Bolts threaded 75 mm for Insert end and 250 mm for clamp end, with 2 locknuts. (Typical)

Const. Jts. at Piers
3 mm Aluminum sheet ASTM B 209 alloy 3003-H14.
Cost Incidental.

** For Insert locations See Sheets 18 and 19.



MEDIAN JOINT DETAILS

MIN. BAR LAP
#15 bar = 640
#25 bar = 1.32 m

REVISION	DATE	DESCRIPTION
STATE OF ILLINOIS DEPARTMENT OF TRANSPORTATION		
MEDIAN BARRIER ELEVATION AND DETAILS - SPANS 2 & 3		
RAMPS B-3 AND B-5 OVER WAR MEMORIAL DR. AND RAMP B-6 F.A.I. ROUTE 74 SECTION (72-7) R-3 PEORIA COUNTY STA. 10+618.61 (RAMP B-3) STA. 10+472.60 (RAMP B-5) STRUCTURE NUMBER 072-0190		
PARSONS TRANSPORTATION GROUP CHICAGO, ILLINOIS		
DRAWING NO.	SCALE	SHEET NO.
12	N.T.S.	12

Date: 11/23/2004 Time: 02:46:41 PM
 File: P:\643996\structure\072-0190\sheet\1\tracings\SD00014-1A0720190.dgn

Designed by: MBO
 Checked by: AK
 Drafted by: JMG
 Checked by: AK