

Bench Mark: PK Nail on S. Side of F.A. 49 (U.S.150 Spur) Bridge Over I-74 West of I-74 on Ramp. Elevation 194.293 m.
 BM 3003 - Chiseled \square on SW corner of 150 spur bridge over War Memorial Drive. Elevation 199.790 m.

Existing Structure: S.N. 072-2506 built in 1965 as two 2.743 m CMP culverts with a length of 100.584 m.
 The existing structure shall be removed. No salvage.

Construction Staging: Stage 2A (E.B. I-74) shall be constructed under Contract #68197.
 Stage 3A (W.B. I-74) shall be constructed under Contract #68200.

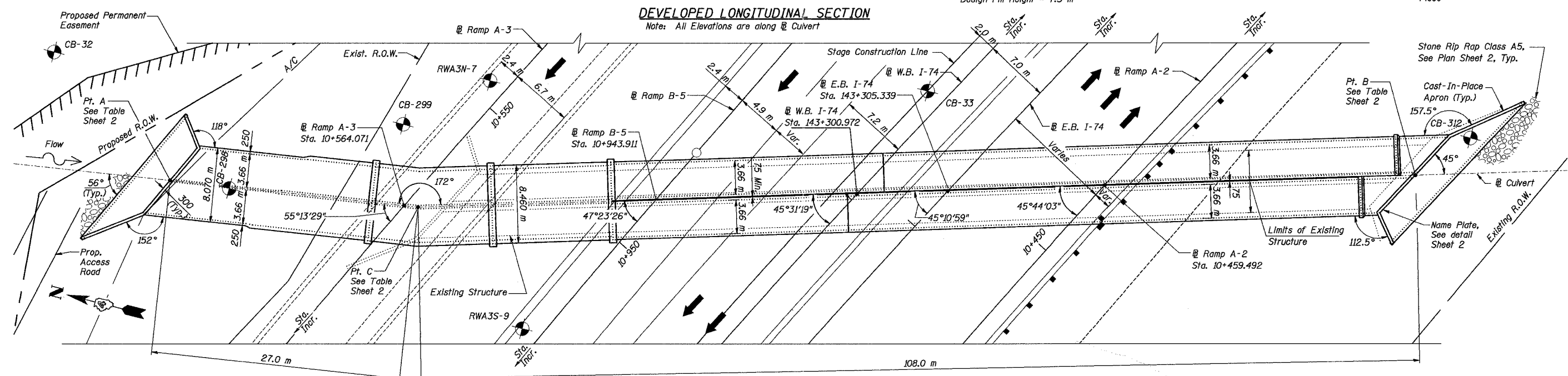
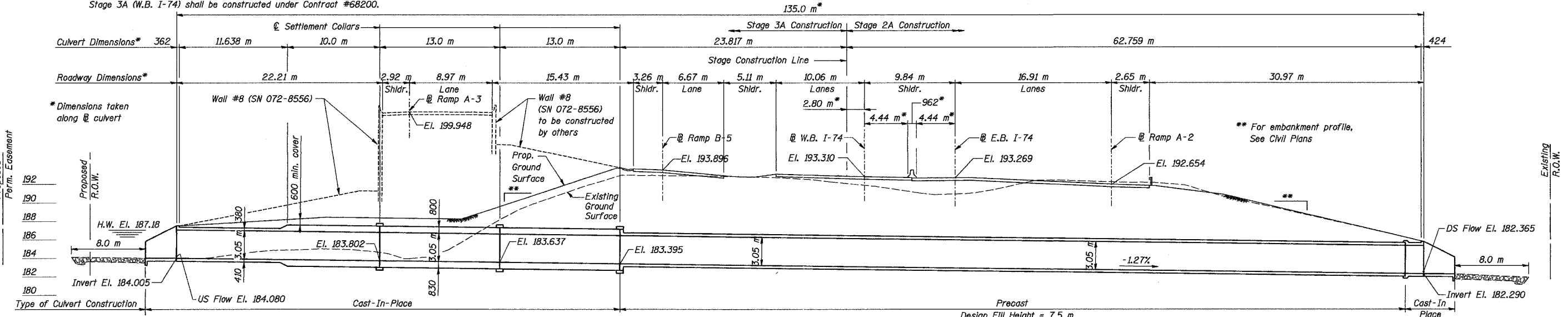
ROUTE NO.	SECT.	COUNTY	SHEET NO.	TOTAL SHEETS
F.A.I. 74	(72-7) R-3	PEORIA	552	1360
FED. ROAD DIST. NO. 7	ILLINOIS	FED. AID PROJECT		

CONTRACT NO. 68200

Date: 11/22/2004 Time: 11:48:35 AM

F:\projects\11-22-04\11-22-04.dgn

F:\projects\11-22-04\11-22-04.dgn



DESIGN SPECIFICATIONS

1996 AASHTO With 1997 through 2002 Interims

LOADING MS18 & ALT.

Allow 2.4 kN/m² for future wearing surface.

DESIGN STRESSES

FIELD UNITS

f'c = 24 MPa
 fy = 420 MPa (Reinf.)

PRECAST UNITS

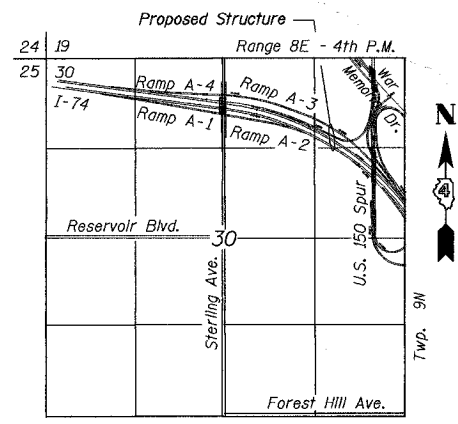
AASHTO M 259M

f'c = 35 MPa
 fy = 450 MPa (Welded Wire Fabric)

STATION 143+305.339 (E.B. I-74)
 BUILT 200_ BY
 STATE OF ILLINOIS
 F.A.I. RT. 74 SEC (72-7)R-1
 STR. NO. 072-2032

NAME PLATE
 See Std. 515001

Boring Locations



The work under this contract consists of Stage 3A construction. Cross hatched sheets and details for Stage 2A are included for information only.

Designed by:	WEE
Checked by:	AK
Drafted by:	JV
Checked by:	AK

REVISION	DATE	DESCRIPTION

STATE OF ILLINOIS
DEPARTMENT OF TRANSPORTATION

GENERAL PLAN AND LONGITUDINAL SECTION

F.A.I. ROUTE 74 (I-74) OVER DRY RUN CREEK
 F.A.I. ROUTE 74 SEC. (72-7)R-3
 PEORIA COUNTY STA. 143+305.339 (E.B. I-74)
 STRUCTURE NUMBER 072-2032

PARSONS TRANSPORTATION GROUP
 CHICAGO, ILLINOIS

DRAWING NO.	SCALE	DATE	SHEET NO.
1	N.T.S.	6/30/03	1