

ROUTE NO.	SECT.	COUNTY	SHEET NO.	TOTAL SHEETS
F.A.I. 74	(72-7) R-3	PEORIA	569	1360
FED. ROAD DIST. NO. 7	ILLINOIS	FED. AID PROJECT		

CONTRACT NO. 68200

**GENERAL NOTES**

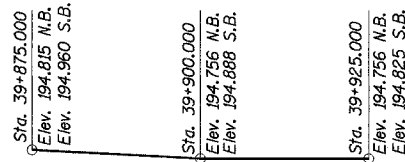
Reinforcement bars shall conform to the requirements of AASHTO M 31M or M 322M Grade 420.

All dimensions are in millimeters (mm) except as noted.

Layout of Rip-Rap may be varied in the field to suit ground conditions as directed by the Engineer.

All construction joints shall be bonded.

Dimensions are based on assumptions of Precast Pipe Culvert dimensions and may vary based on final precast design.



**INDEX OF SHEETS**

1. General Plan and Longitudinal Section
2. General Notes, Total Bill of Material & Details
3. North Headwall
4. South Headwall
5. Sidewall and Connection Collar Reinforcement Details
6. Bill of Material & Misc. Details
7. Boring Logs I
8. Boring Logs II
9. Boring Logs III

**TOTAL BILL OF MATERIAL**

ITEM	UNIT	TOTAL
Name Plates	Each	1
Stone Riprap, Class A5	m <sup>2</sup>	443
Filter Fabric for Use with Riprap	m <sup>2</sup>	443
Concrete Headwall Removal	m <sup>3</sup>	66.0
Reinforcement Bars	kg	17,080
Concrete Box Culverts **	m <sup>3</sup>	176.2

\*\* Cost of concrete for Pipe Culverts Included with Concrete Box Culverts.

**WATERWAY INFORMATION**

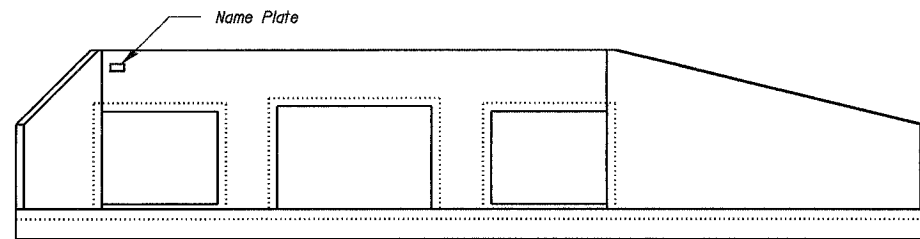
Drainage Area = 3.83 km<sup>2</sup> Low Grade Elev. 194.00 m @ Sta. 39+899.680

Flood	Freq. Yr.	Q cms	Opening Sq. m		Nat. H.W.E. m Prop.	Head - m		Headwater Elev. - m	
			Exist.	Prop.		Exist.	Prop.	Exist.	Prop.
Design	50	71.0	11	23	190.71	3.35	0.55	194.07	191.26
Base	100	79.0	11	23	190.84	3.26	0.67	194.10	191.51
Overtopping	20	62.0	11	-	-	3.35	-	194.01	-
Max. Calc.	500	91.0	-	21	190.99	-	0.88	-	191.87

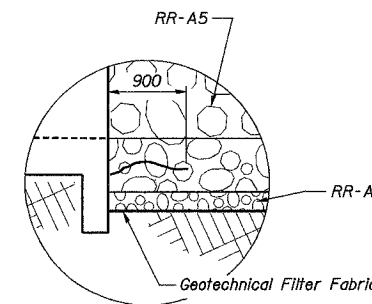
Note: Nat. H.W.E. Measured at Upstream Face of Culvert

**PROFILE GRADE N.B. & S.B. WAR MEMORIAL DR.**

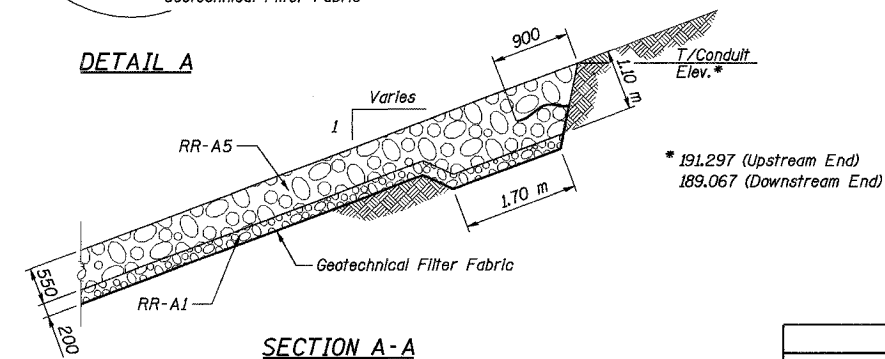
Existing Outside Edge of Pavement (Includes 100 mm Grade Raise - Resurfacing of roadway)



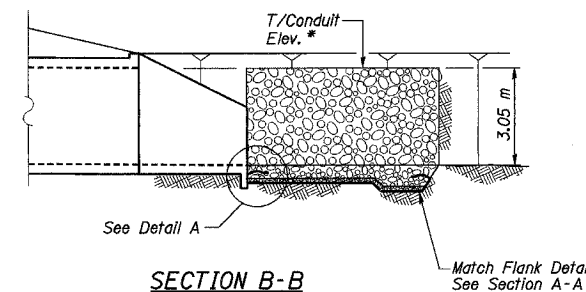
**NAME PLATE LOCATION**  
Downstream End Only



**DETAIL A**



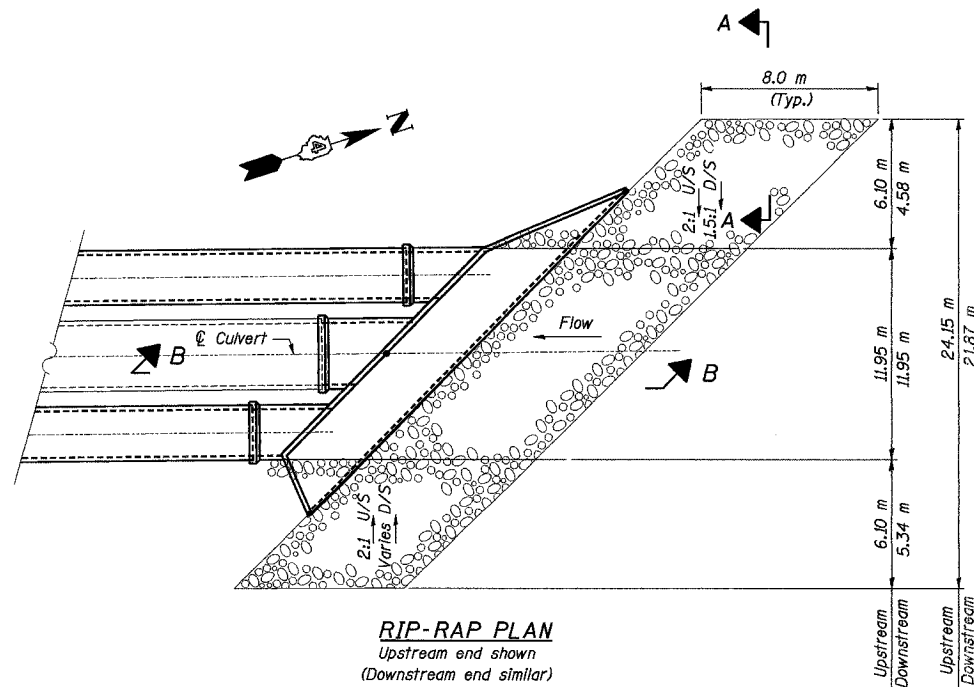
**SECTION A-A**  
Flank Detail



**SECTION B-B**

**CURVE DATA**

War Memorial Dr.  
Curve 200  
 $\Delta = 20^\circ 20' 45''$   
 $R = 5,374.349 \text{ m}$   
 $L = 1,908.452 \text{ m}$   
 $T = 964.381 \text{ m}$   
 $E = 85.840 \text{ m}$   
 $PC = \text{Sta. } 38+811.662$   
 $PI = \text{Sta. } 39+776.043$   
 $PT = \text{Sta. } 40+720.114$   
 $SE = \text{Normal Crown}$



**RIP-RAP PLAN**  
Upstream end shown (Downstream end similar)

Date: 01/31/2005 Time: 09:31:47 AM

Filename: P:\643996\str\luctur\0172-2029-culvert\sheet\Tracings 2\GP0002-1A072-2504.dgn

Designed by: WEE  
 Checked by: AK  
 Drafted by: RKS  
 Checked by: ET/AK

REVISION	DATE	DESCRIPTION
STATE OF ILLINOIS DEPARTMENT OF TRANSPORTATION GENERAL NOTES, TOTAL BILL OF MATERIAL & DETAILS		
WAR MEMORIAL DRIVE OVER DRY RUN CREEK F.A.I. ROUTE 74 SEC. (72-7)R-3 PEORIA COUNTY STA. 39+899.517 (U.S. 150) STRUCTURE NUMBER 072-2504		
PARSONS TRANSPORTATION GROUP CHICAGO, ILLINOIS		
DRAWING NO. 2	SCALE N.T.S.	DATE 11/4/04
		SHEET NO. 2