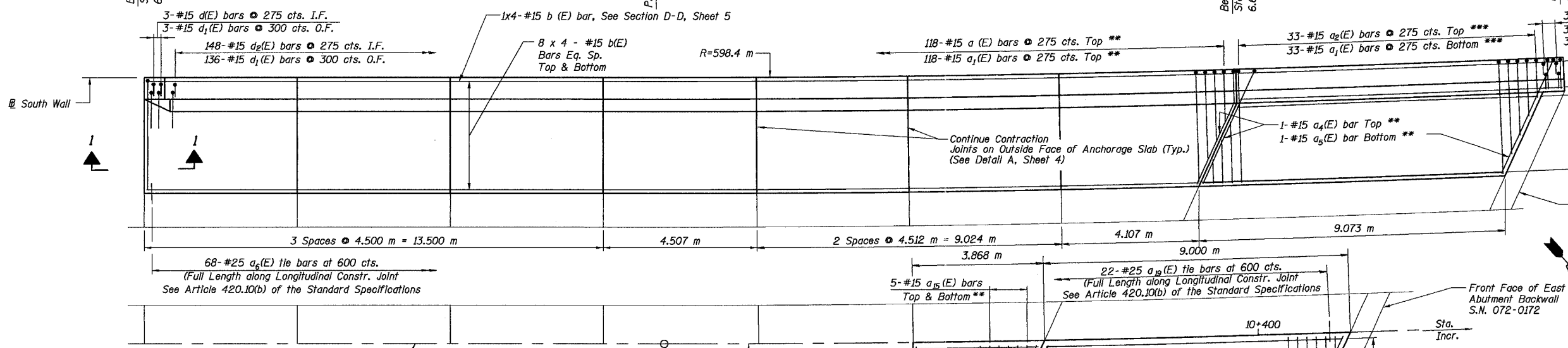
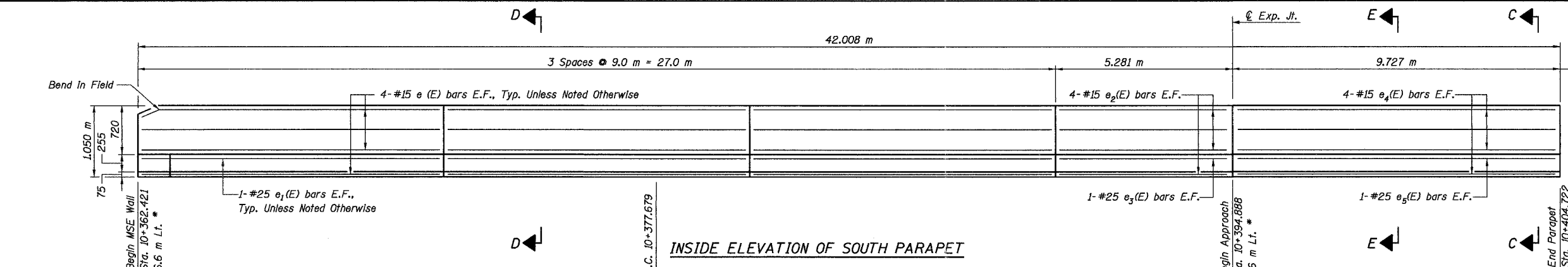


| ROUTE NO. | SECT. | COUNTY | SHEET NO. | TOTAL SHEETS |
|---------------------|------------|------------------|--------------------|--------------|
| F.A.I. 74 | (72-7) R-3 | PEORIA | 601 | 1360 |
| FED. ROAD DIST. NO. | ILLINOIS | FED. AID PROJECT | CONTRACT NO. 68200 | |
| 7 | | | | |

Date: 11/22/2004 Time: 12:32 PM
 File: P:\643996\Structural\072-8557-Wall\8A\sheet\Tracings\SD0001-1A072-8557.dgn

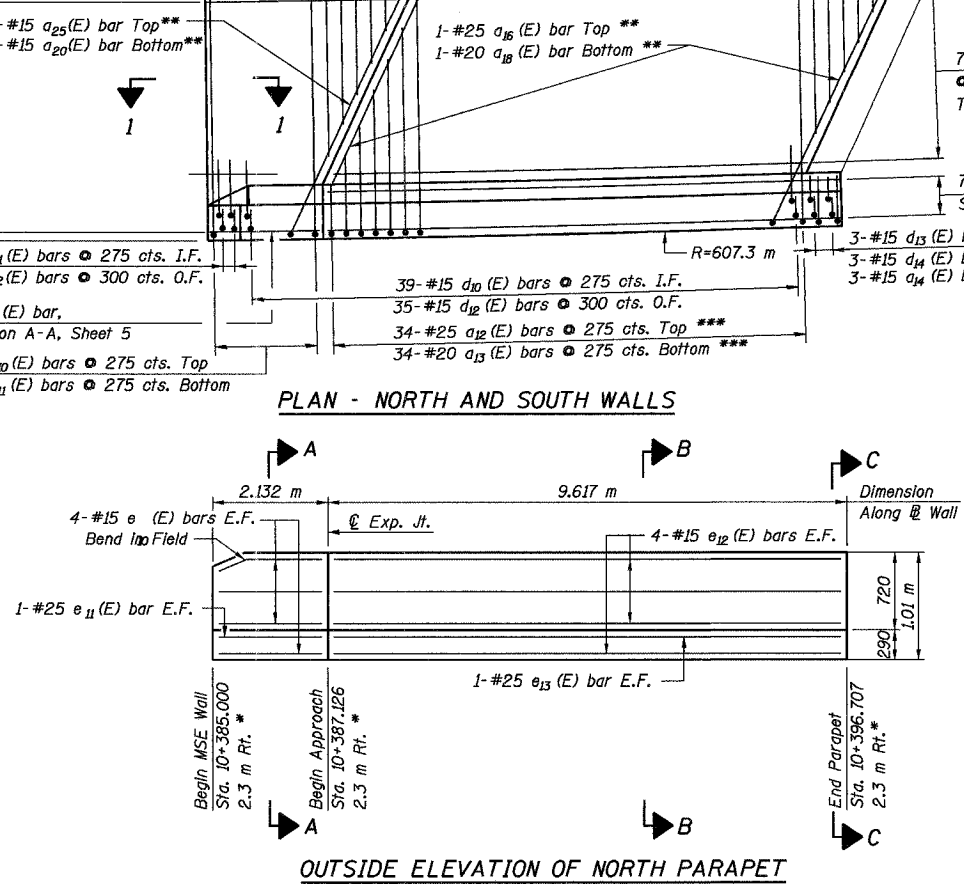


JOINT DATA

| | South Wall | | | North Wall | | |
|-------------------------|------------------|----------------------------|-------------------------|------------------|----------------------------|-------------------------|
| | Station Ramp A-3 | Edge of Pavement Elevation | B/Coping Line Elevation | Station Ramp A-3 | Edge of Pavement Elevation | B/Coping Line Elevation |
| Begin South Wall | 10+362.421 | 195.564 | 194.956 | — | — | — |
| Joint | 10+366.921 | 195.834 | 195.226 | — | — | — |
| Joint | 10+371.421 | 196.104 | 195.496 | — | — | — |
| Joint | 10+375.921 | 196.374 | 195.766 | — | — | — |
| Joint | 10+380.451 | 196.646 | 196.038 | — | — | — |
| Joint/Begin North Wall | 10+385.000 | 196.919 | 196.311 | 10+385.000 | 197.086 | 196.454 |
| Joint | 10+389.549 | 197.192 | 196.584 | N/A | N/A | N/A |
| Begin Approach | 10+394.888 | 197.512 | 196.904 | 10+387.126 | 197.214 | 196.582 |
| End Parapet/FF Backwall | 10+404.722 | 198.096 | 197.496 | 10+396.707 | 197.788 | 197.192 |

* Station and offset refer to @ Ramp A-3
 ** Cut or Bend In Field to fit
 *** Order a1(E), a2(E), a12(E) and a13(E) bars Full Length. Cut to Fit Skew and use Remainder of bars in Opposite End of Approach Pavement

Designed by: WEE/EI
 Checked by: AK/CTJ
 Drafted by: RKS
 Checked by: AK/CTJ



Aluminum Sheeted Expansion Joints in Parapet (See Detail A, Sheet 4) Exclude at Beginning Approach Pavement Dimensions Along @ Wall

3-#15 d3(E) bars @ 275 cts. I.F.
 3-#15 d4(E) bars @ 275 cts. O.F.
 3-#15 d5(E) bars @ 275 cts.

7-#15 b2(E) bars @ Eq. Sp. Top & Bottom

Front Face of East Abutment Backwall S.N. 072-0172

Front Face of East Abutment Backwall S.N. 072-0172

Notes:
 See Sheet 5 for Sections A-A thru E-E.
 See Sheet 7 for View 1-1.
 Contraction Joints in Anchorage Slab shall be perpendicular to @ Ramp A-3.
 Reinforcement bars designated (E) shall be epoxy coated.
 Bars indicated thus 20 x 3-#15 etc. indicates 20 lines of bars with 3 lengths per line.
 All dimensions are in millimeters (mm) except as noted.
 For Bill of Materials, see Sheet 4.

| REVISION | DATE | DESCRIPTION |
|--|--------|-------------|
| STATE OF ILLINOIS DEPARTMENT OF TRANSPORTATION ANCHORAGE SLABS AND PARAPETS MSE WALL NO. 8A - RAMP A-3 F.A.I. ROUTE 74 SECTION (72-7)R-3 PEORIA COUNTY STA. 10+362.421 TO STA 10+408.988 (RAMP A-3) STRUCTURE NUMBER 072-8557 PARSONS TRANSPORTATION GROUP CHICAGO, ILLINOIS | | |
| DRAWING NO. | SCALE | DATE |
| 3 | N.T.S. | 6/25/04 |
| SHEET NO. | 3 | |