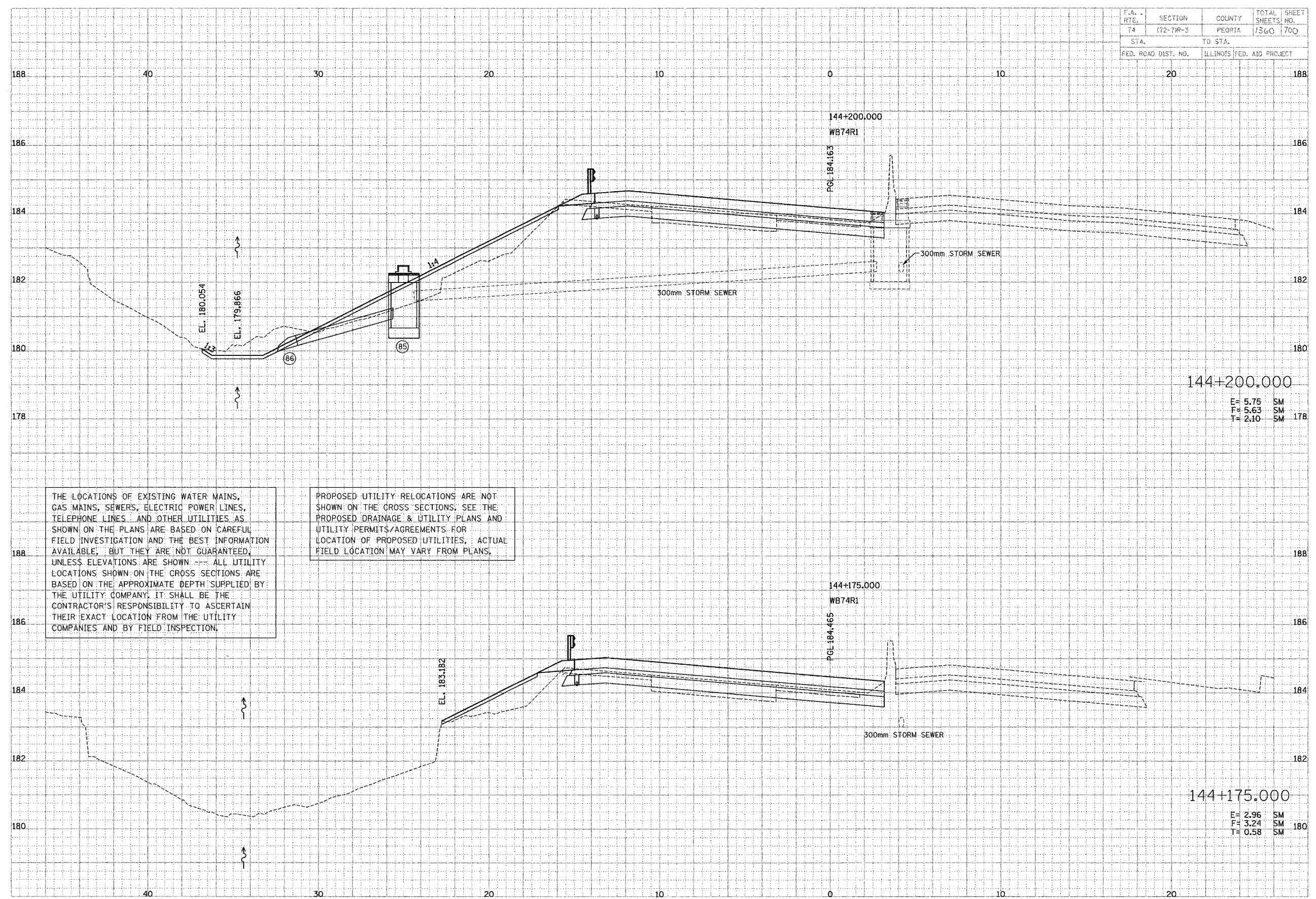


F.A. RTE.	SECTION	COUNTY	TOTAL SHEETS	SHEET NO.
T4	(72-7)P-3	PEORIA	1360	1700
STA.	TO STA.			
FED. ROAD DIST. NO.	ILLINOIS	FED. AID PROJECT		

DATE	BY	CHKD.
DATE	BY	CHKD.
DATE	BY	CHKD.

PARSONS  
TRANSPORTATION GROUP  
Engineers and Planners

DATE	BY	CHKD.
DATE	BY	CHKD.
DATE	BY	CHKD.



THE LOCATIONS OF EXISTING WATER MAINS, GAS MAINS, SEWERS, ELECTRIC POWER LINES, TELEPHONE LINES AND OTHER UTILITIES AS SHOWN ON THE PLANS ARE BASED ON CAREFUL FIELD INVESTIGATION AND THE BEST INFORMATION AVAILABLE, BUT THEY ARE NOT GUARANTEED, UNLESS ELEVATIONS ARE SHOWN. ALL UTILITY LOCATIONS SHOWN ON THE CROSS SECTIONS ARE BASED ON THE APPROXIMATE DEPTH SUPPLIED BY THE UTILITY COMPANY. IT SHALL BE THE CONTRACTOR'S RESPONSIBILITY TO ASCERTAIN THEIR EXACT LOCATION FROM THE UTILITY COMPANIES AND BY FIELD INSPECTION.

PROPOSED UTILITY RELOCATIONS ARE NOT SHOWN ON THE CROSS SECTIONS. SEE THE PROPOSED DRAINAGE & UTILITY PLANS AND UTILITY PERMITS/AGREEMENTS FOR LOCATION OF PROPOSED UTILITIES. ACTUAL FIELD LOCATION MAY VARY FROM PLANS.

144+200.000  
E= 5.75 SM  
F= 5.63 SM  
T= 2.10 SM

144+175.000  
E= 2.96 SM  
F= 3.24 SM  
T= 0.58 SM